



QE

10 10

9

QE

360

Boll

420

QE

10 10

9

4

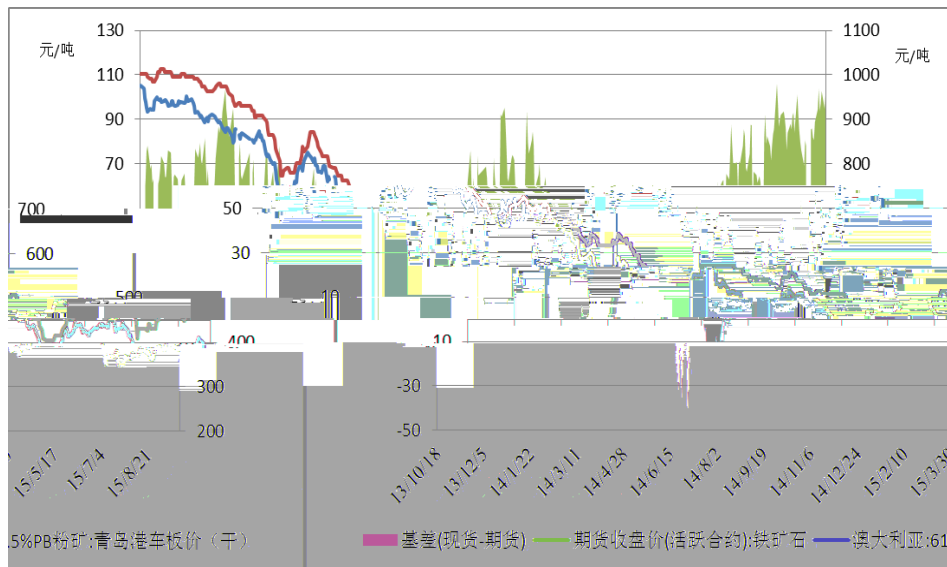
1

PB 435-445 /

9 22

101.76 /

1



wind

2

9 18

985

727

826

1263

3% 8% 5%

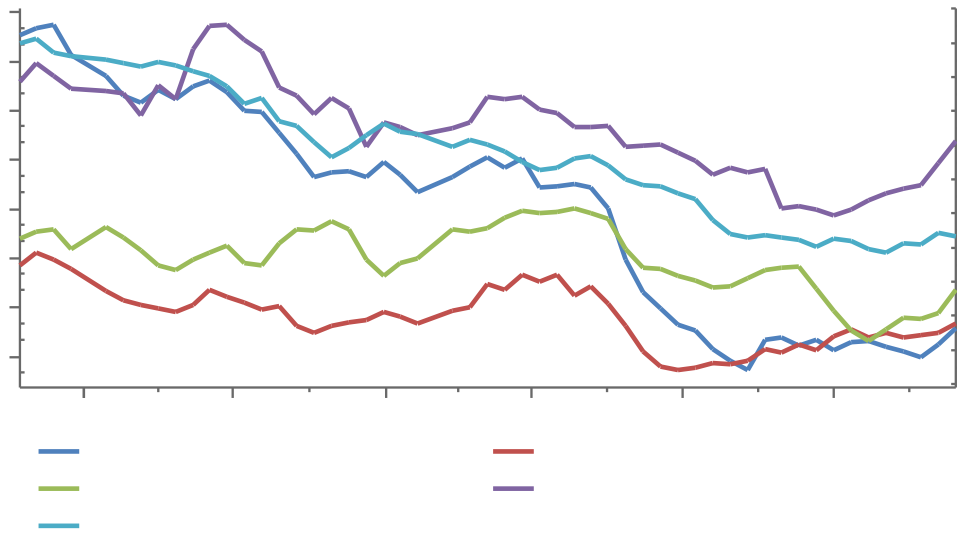
217

/

253

/

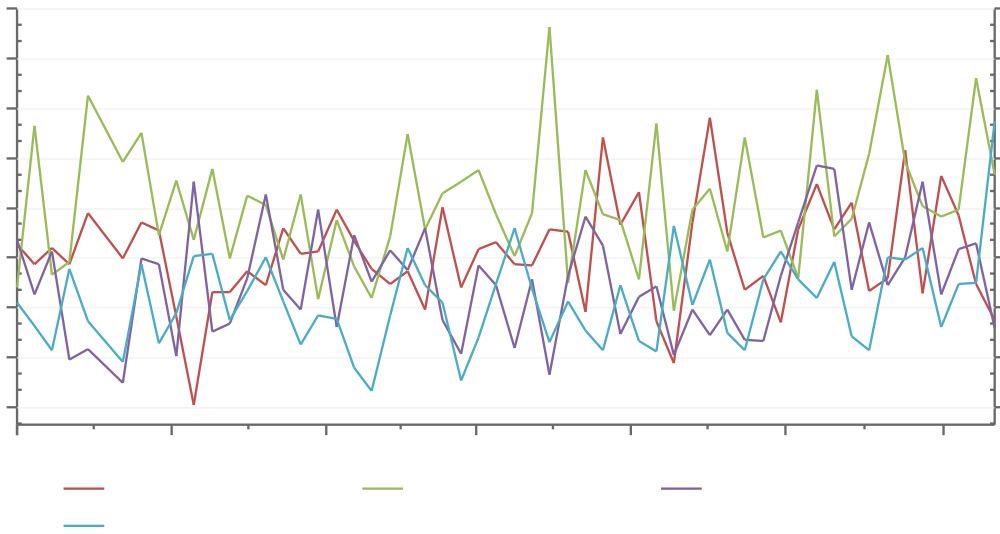
2



3

					2015	2
	8530				2	6009
	6%	2	8140		8%	
FMG	2	4240		10%		
	1-6		4.53			2.91
	8410		3.75			83%
	6%					

3



7



QE

350-425

CCTV

2014

<http://www.qhrb.com.cn/2015/1012/186456.shtml>

[http://www.microbell.com/ecodetail\\_3613076.html](http://www.microbell.com/ecodetail_3613076.html)

<http://futures.eastmoney.com/news/1513,20151012554865855.html>

<http://toutiao.com/news/6204678861550731778/>

<http://goodsfu.10jqka.com.cn/20151012/c584971884.shtml>

<http://www.ieforex.com/qh/20151012/685054.html>