

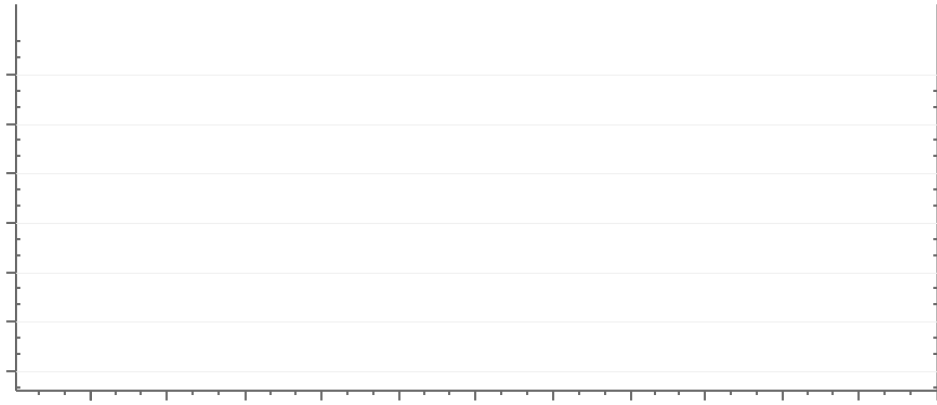
12 17

25

2006 7

0.25%

0.50%



3.

2004 6 -2006 5

911

2003

2003

2004

GDP

4.2%

2003 11

6%

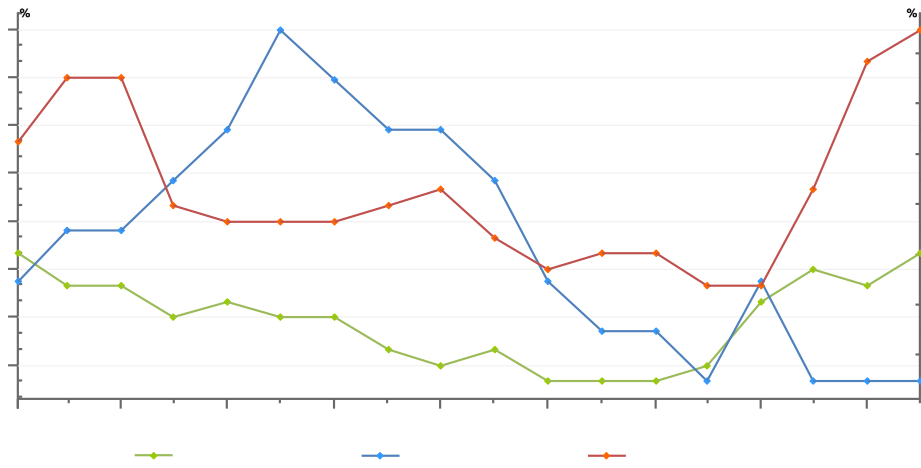
CPI

2%

2004

CPI

3%

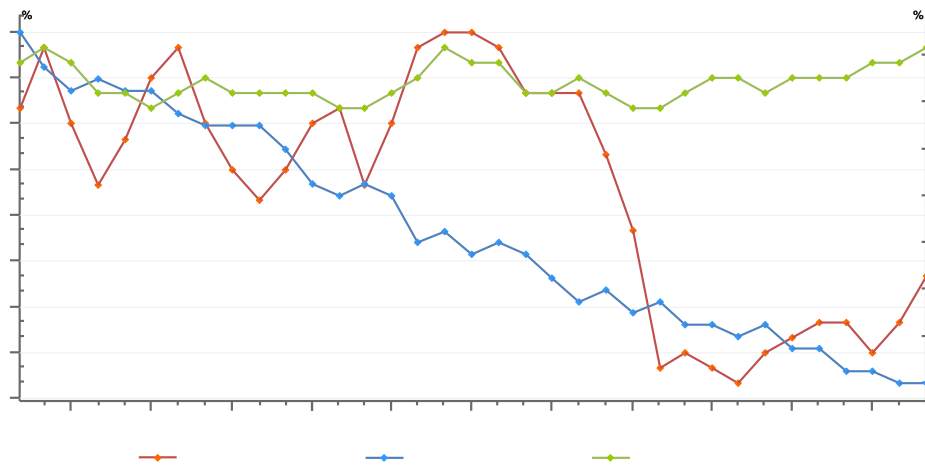
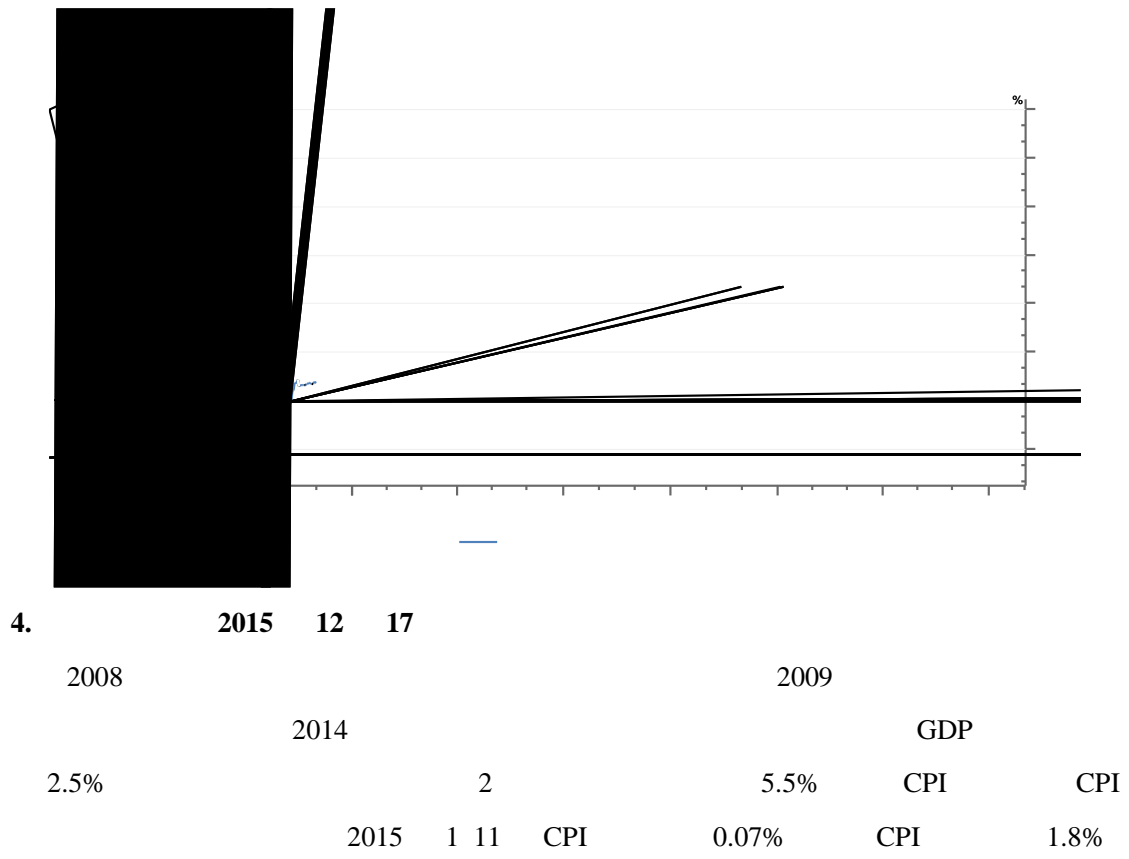


2004 6

2006 6

5.25%

25

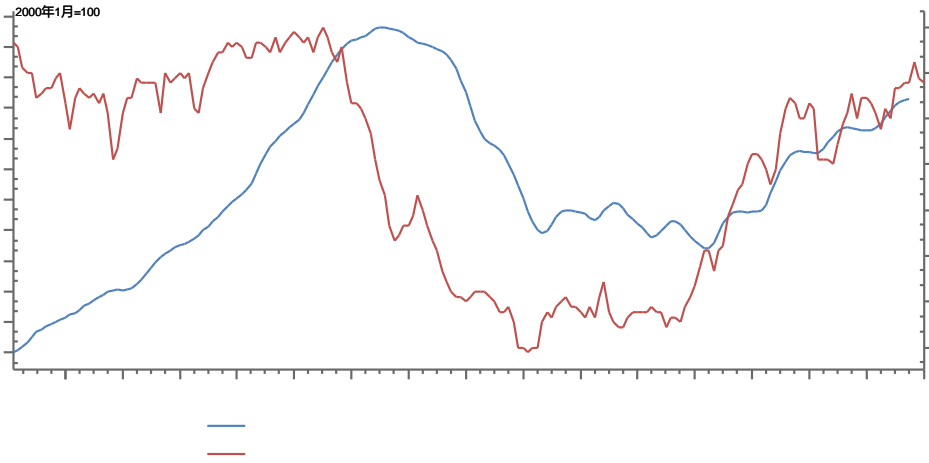


2012

2005

12 17

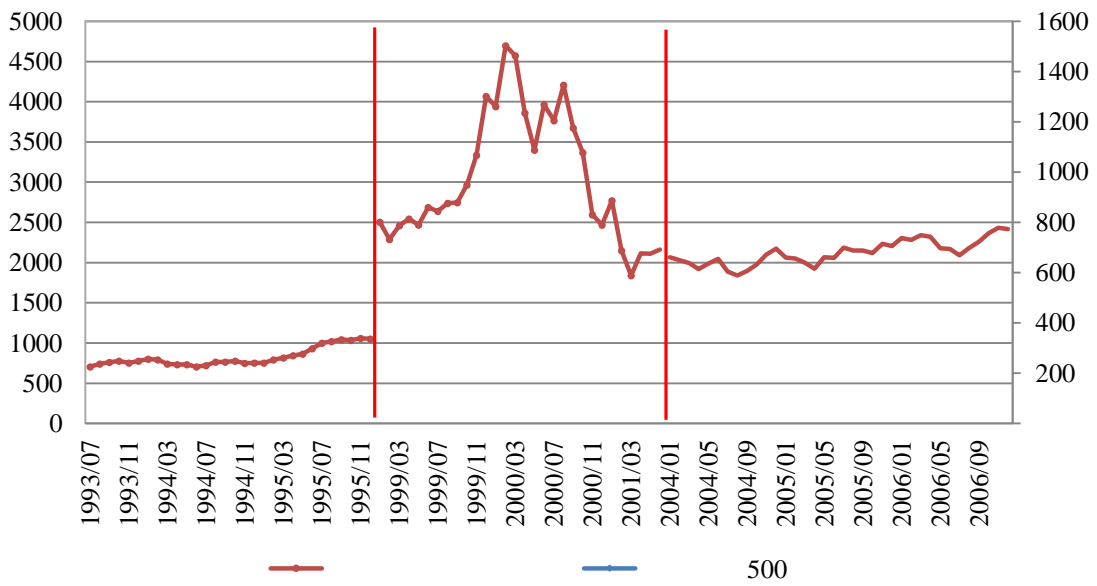
0.25% 9



1.

500

1999 2000



2.



3.

2004 2006

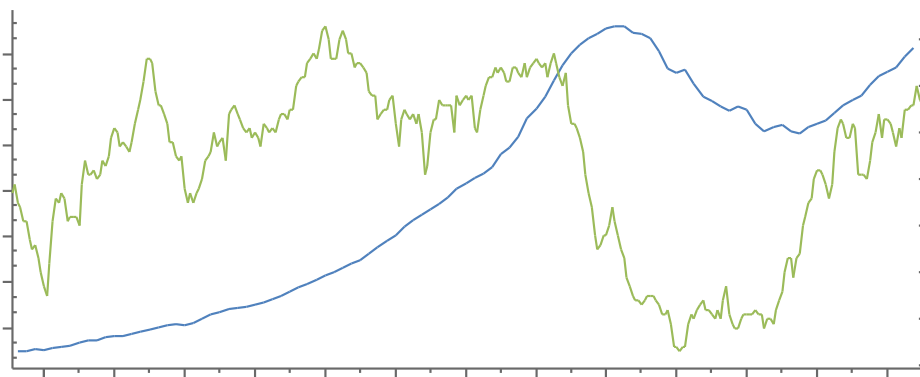
2004 6 2006 6

17

1%

5.25%

30



—
—

2004 2006

PMI

11

48.6

10%

1999

6%

2006

