

： K

豆粕1809(DCE m1809) 日线

MA組合(5,10,20,60,120,250)

MA5 3226.33

MA10 3241.50

MA20 3196.75

MA60 3200.00

MA120 3225.27

MA250 3200.00

持仓0.09%

成交量与持仓量双双增加，对比外盘美豆指数，表现更为坚挺，国内豆粕棕榈油日内冲高回落。技术指标上，豆粕主力合约由早盘震荡的走势，但突破10日线后小幅回吐上涨幅度，20日均线逐步上移提供支撑，MACD指标并未形成

MACD

MA

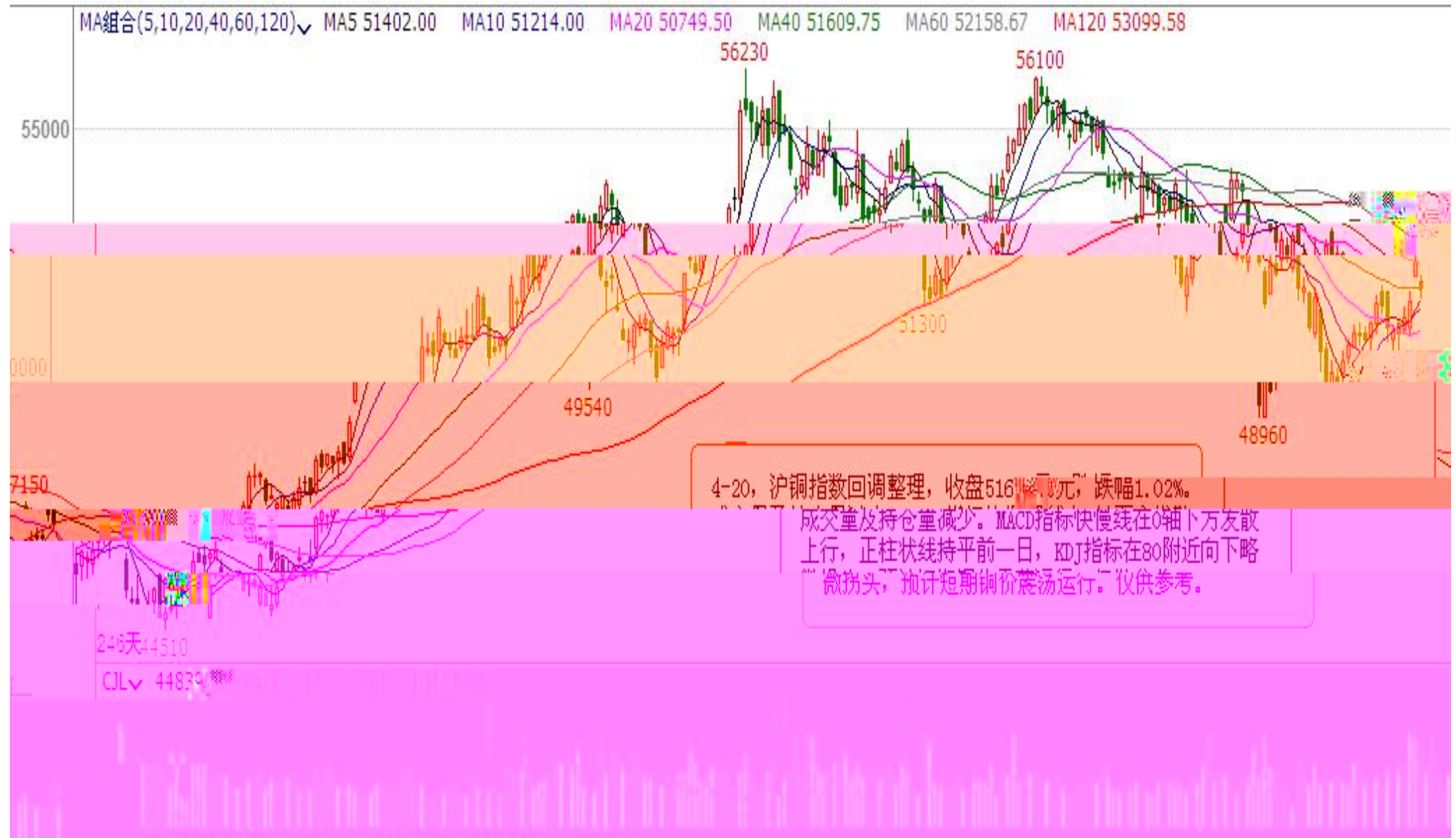


: K

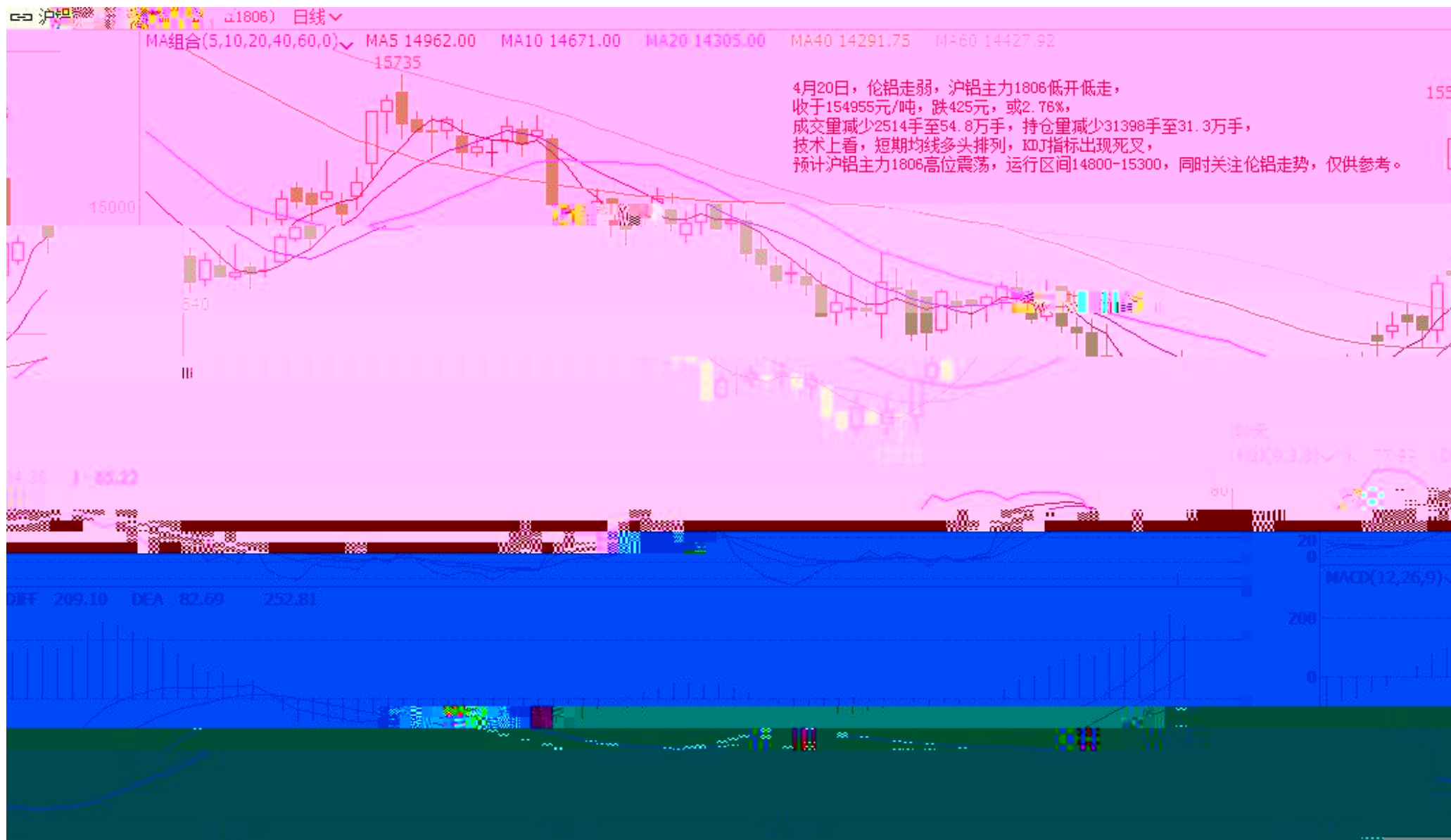


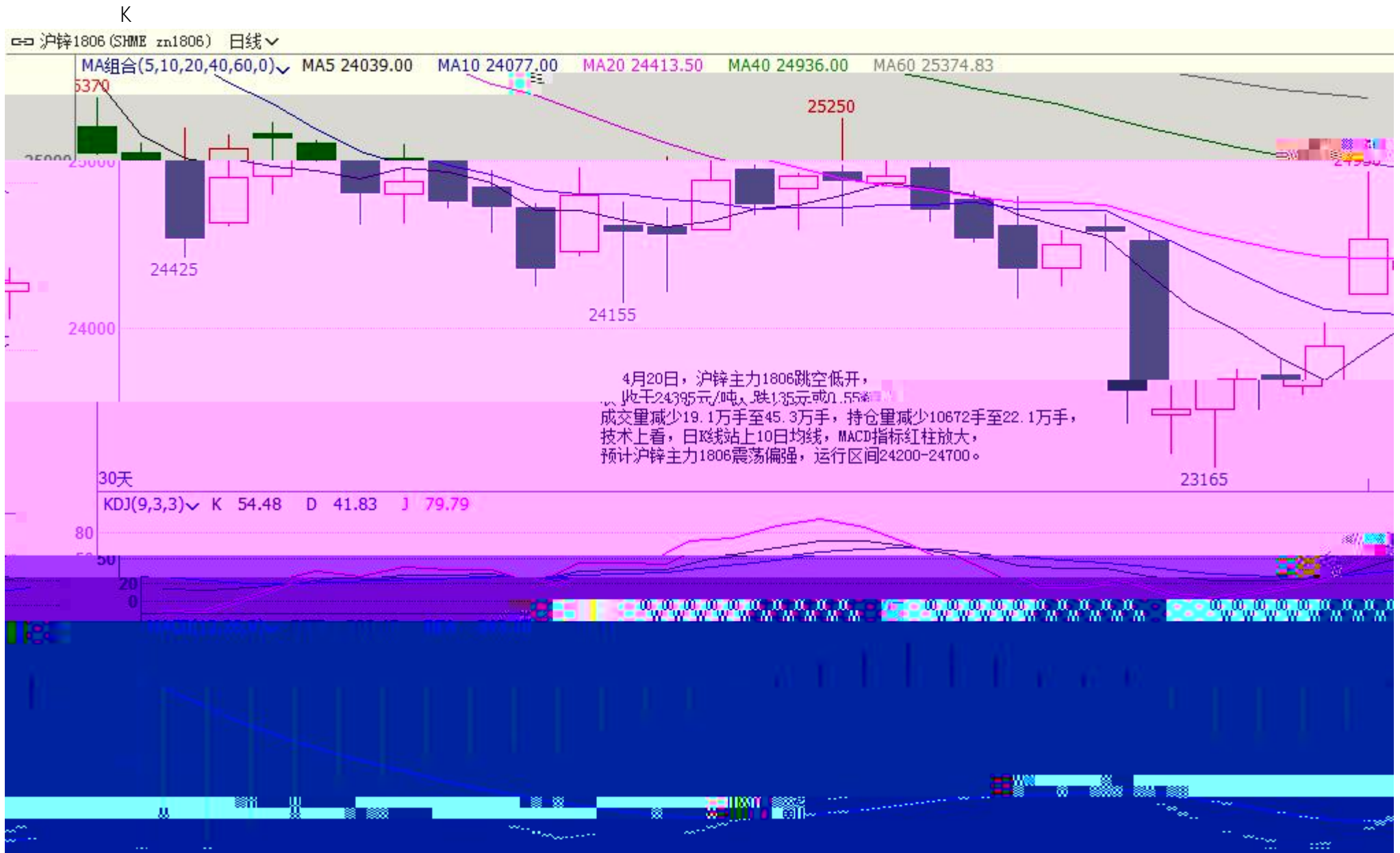
K

沪铜指数 (SHME 2100) 日线



K

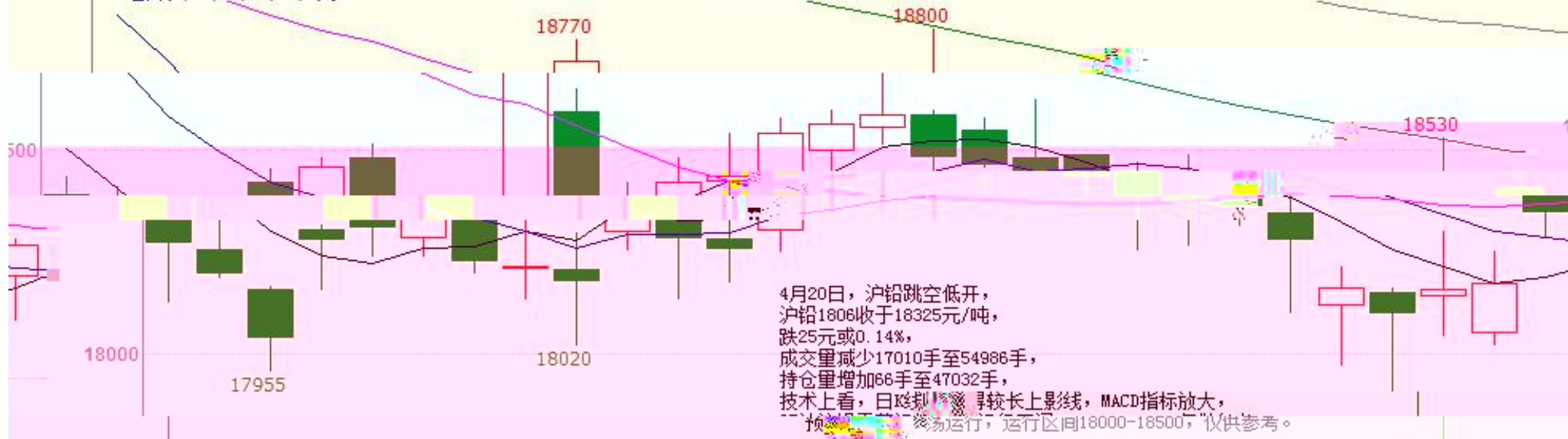




K

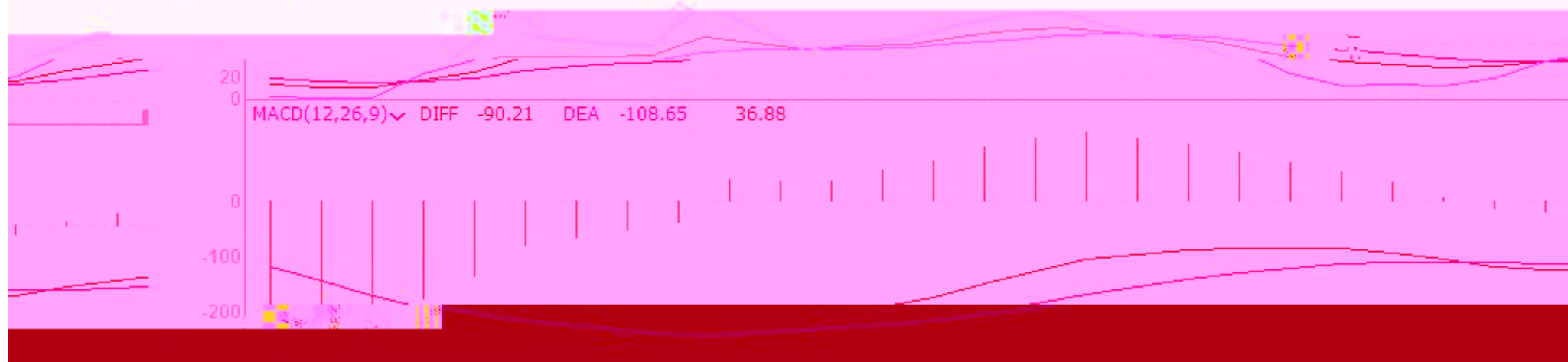
沪铅1806 (SHME pb1806) 日线

MA组合(5,10,20,40,60,0) MA5 18269.00 MA10 18262.00 MA20 18355.00 MA40 18483.38 MA60 18781.42



30天

KDJ(9,3,3) K 62.45 D 50.97 J 85.46



K



K





--

"

"



020- 221 39858



020- 22139813



020- 22139817



020- 22139824

5

1007-1012

510623