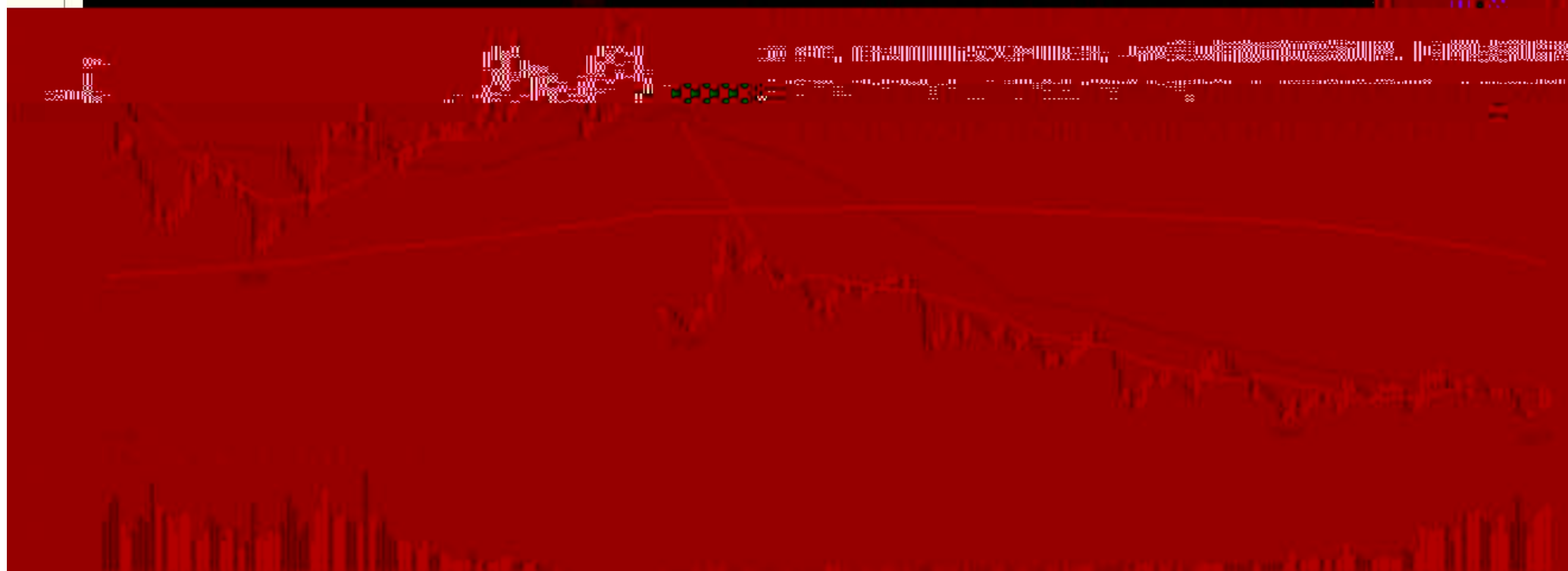


K

豆粕1909(DCE m1909) 日线

MA组合(5,10,20,60,120,250) MA5 2576.00 MA10 2588.30 MA20 2606.15 MA60 2609.12 MA120 2661.89 MA250 2864.63



K



K

沪锌1906 (SHFE zn1906) 日线



K

沪铝1906 (SHFE a11906) 日线

BOLL(26,26,2) MID 13938.85 TOP 14307.95 BOTTOM 13569.75

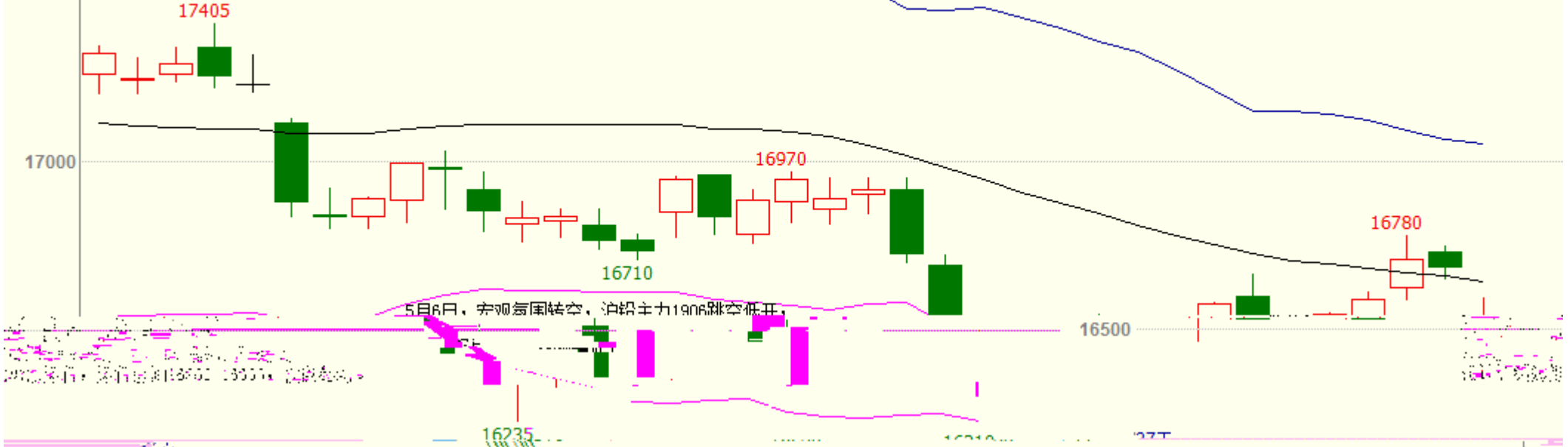
4月30日，沪铝主力合约1906跳空低开，收于14715元/吨，涨20元/吨或0.15%。
技术上看，KDJ指标钝化，MACD指标红柱缩短，预计沪铝主力1906震荡运行，运行区间14000-14300，仅供参考。关注电解铝冶炼厂复产进度及库存下降速度。



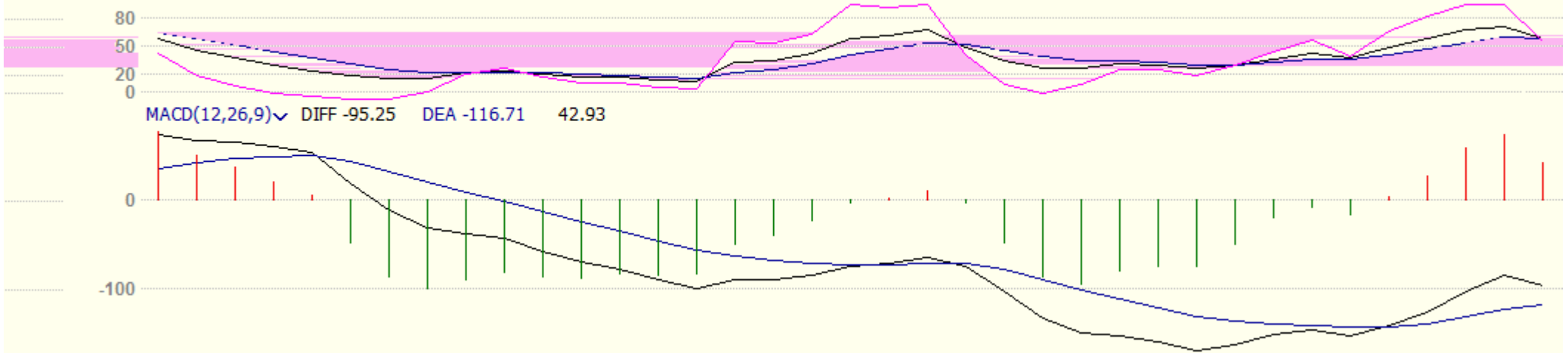
K

沪铅1906 (SHFE pb1906) 日线

BOLL(26,26,2) MID 16641.54 TOP 17050.31 BOTTOM 16232.77



K 57.00 J 54.73



2019/03

2019/04

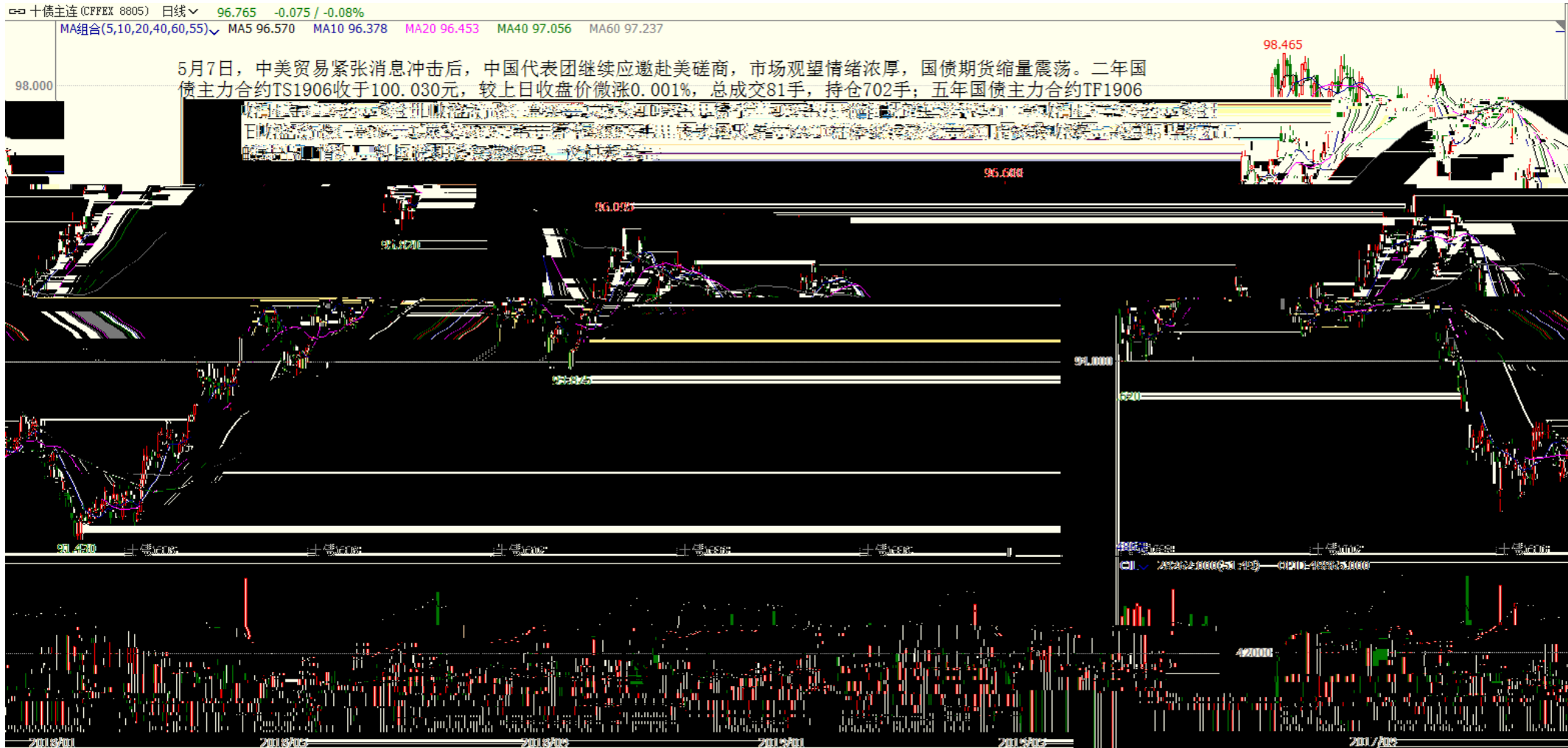
2019/05

K

沪铜1906(SHFE cu1906) 日线



K



--

"

"



020-22139858



020-22139813



020-22139817



020-22139824

5

1007-1012

510623