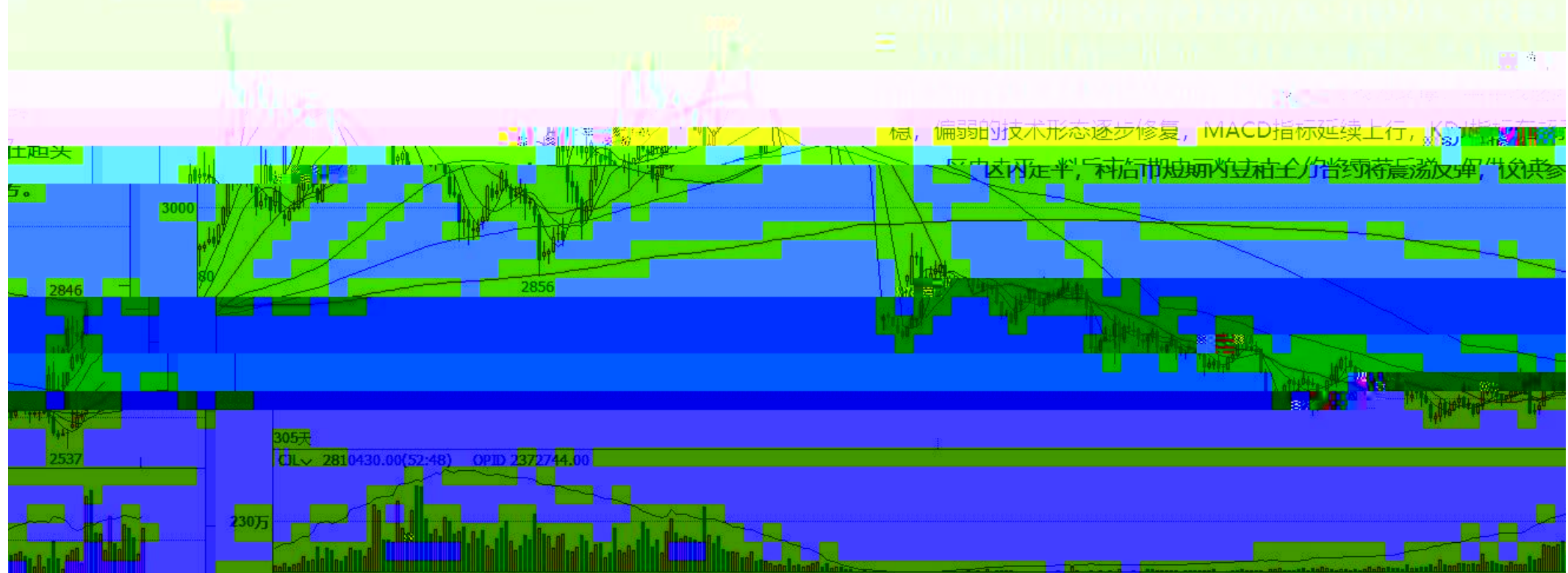


K

豆粕1909(DCE m1909) 日线

MA组合(5,10,20,30,60,120,240)



305天

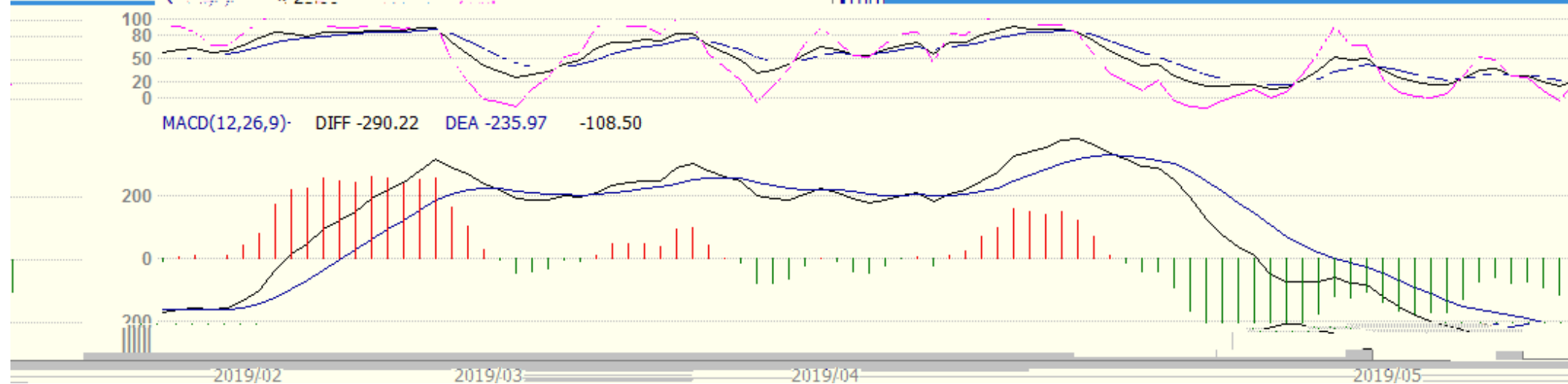
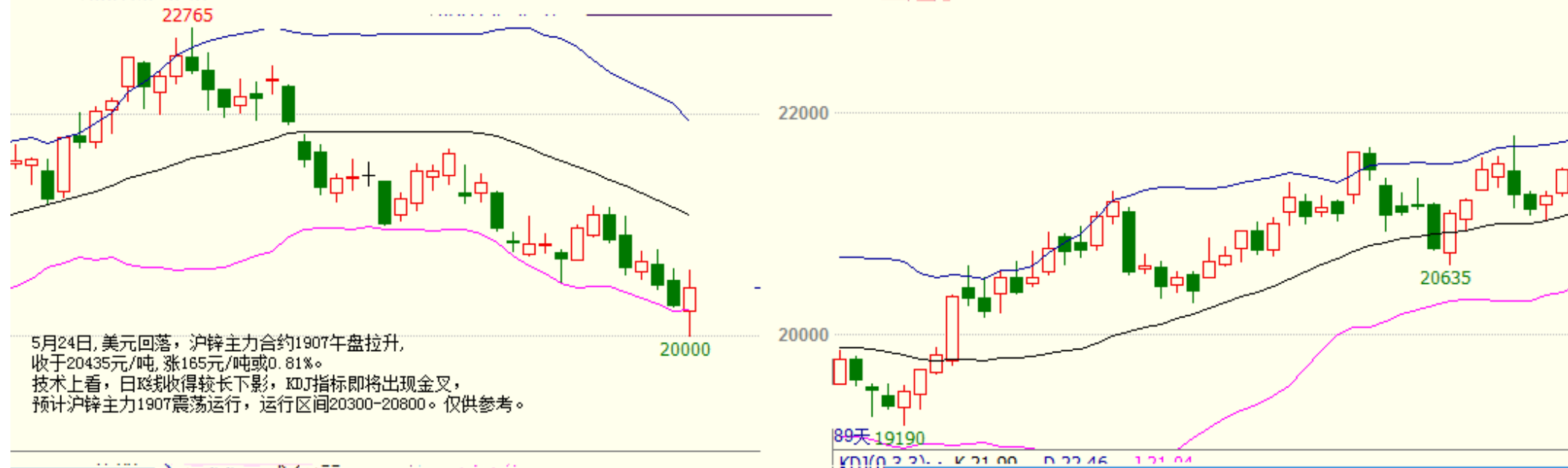
CI 2810430.00(52:48) OPID 2372744.00



K

沪锌1907 (SHFE zn1907) 日线

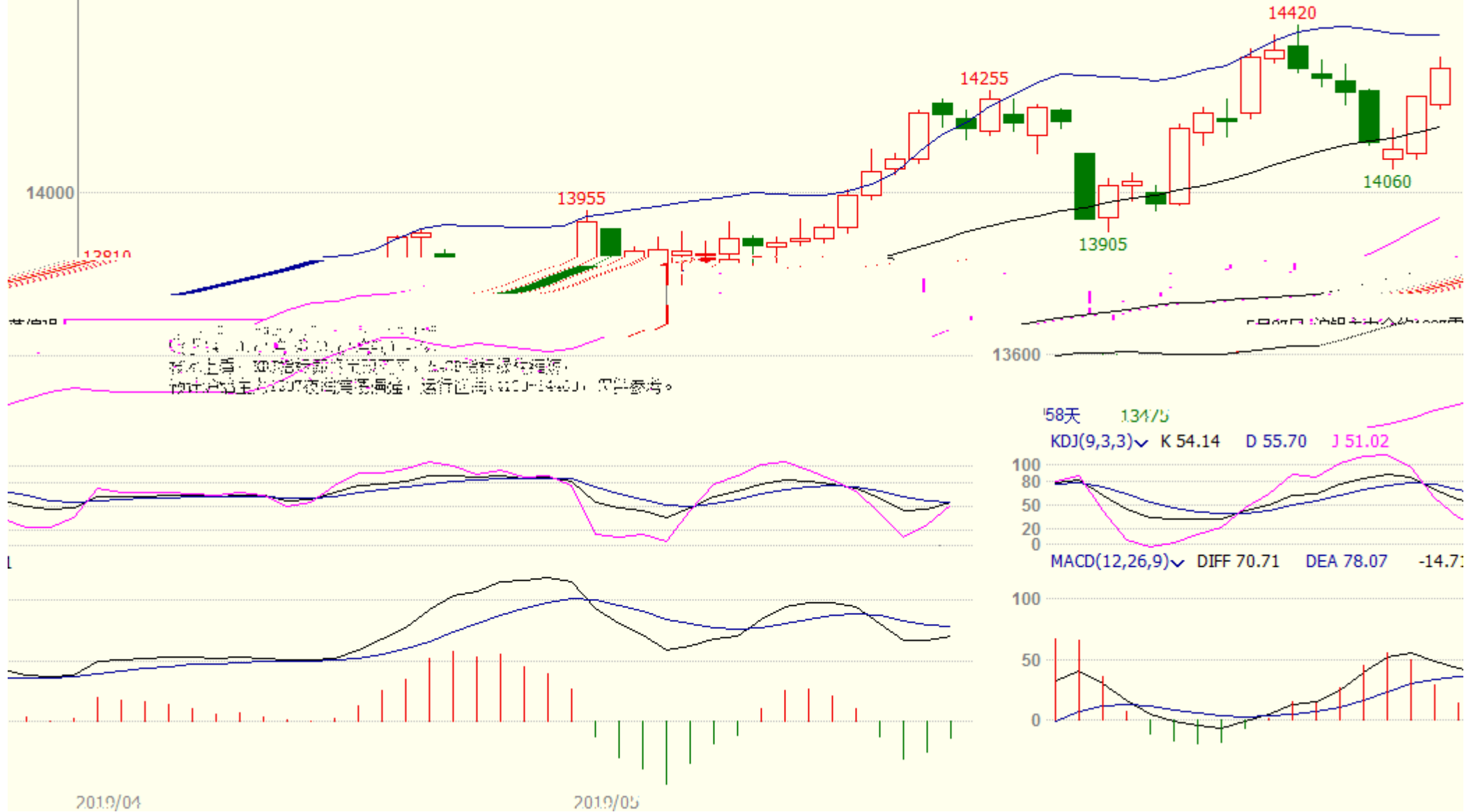
BOI(26.26.2), MID 21083.08 TOP 21927.47 BOTTOM 20238.68



K

沪铝1907 (SHFE al1907) 日线

BOLL(26,26,2) MID 14166.15 TOP 14395.11 BOTTOM 13937.20



K

沪铅主连 (SHFE 2895) 日线

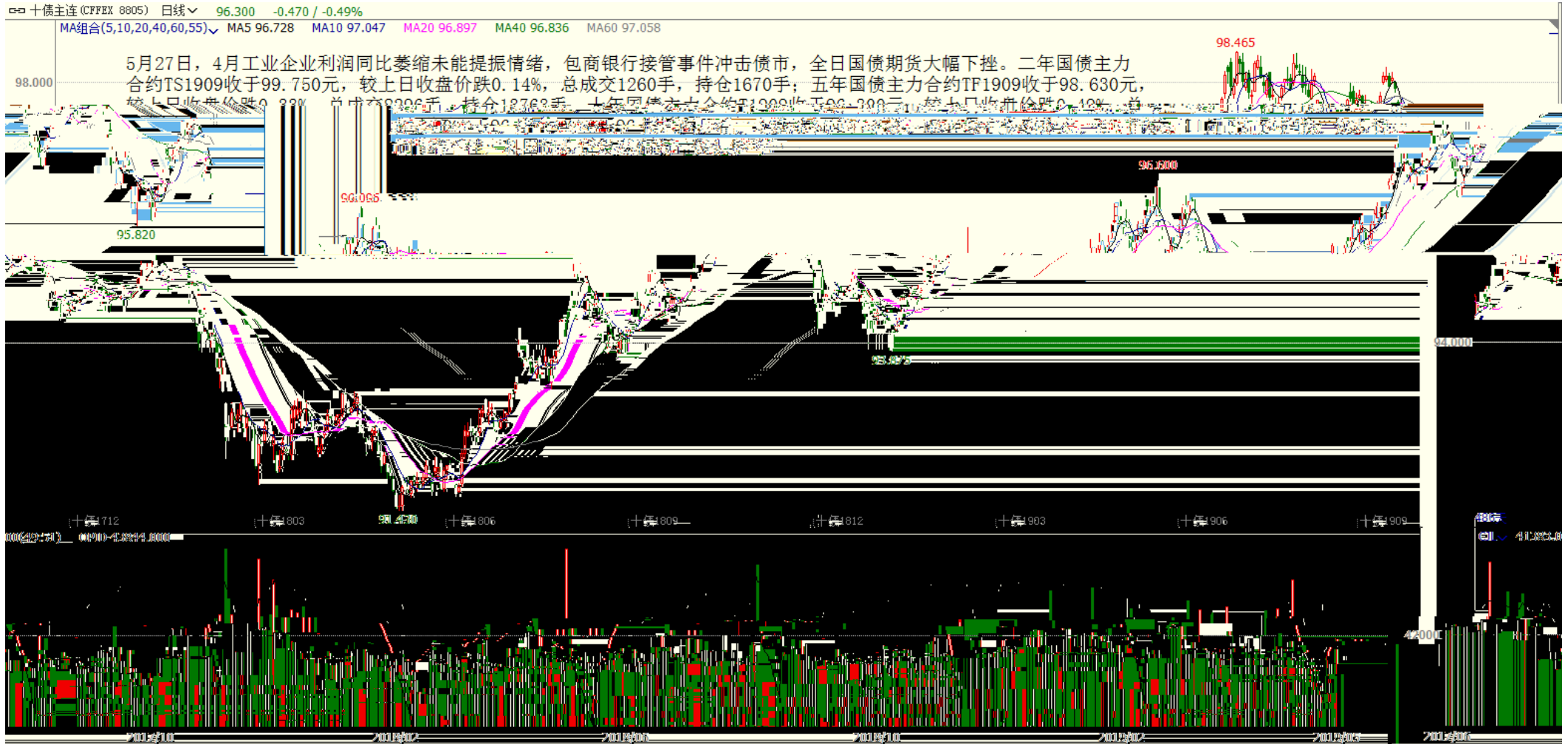


K

沪铜1907(SHFE cu1907) 日线



K



K

螺纹钢1910 (SHFE rb1910) 日线

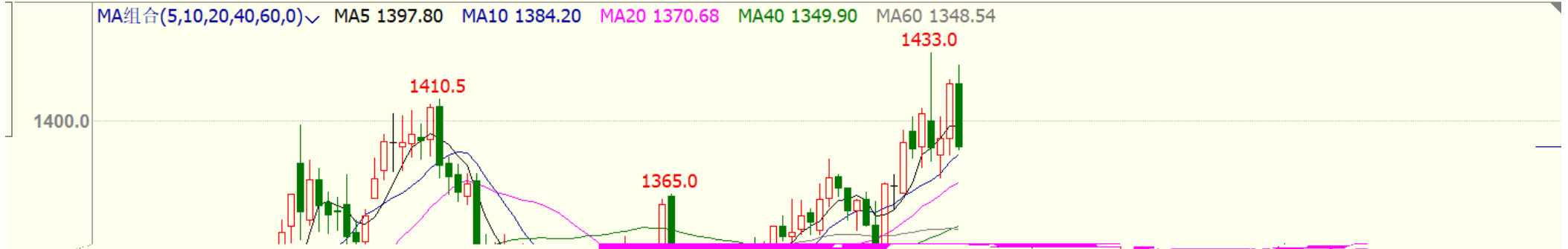




K

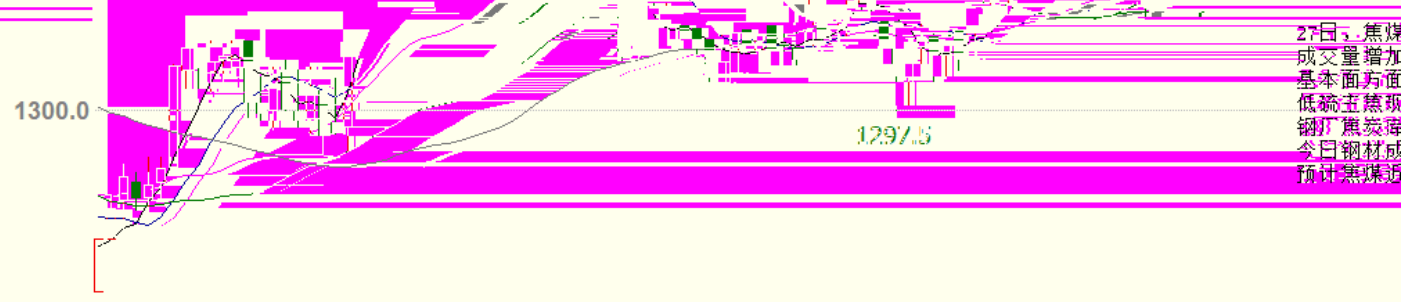
焦煤1909(DCE jm1909) 日线

MA组合(5,10,20,40,60,0) MA5 1397.80 MA10 1384.20 MA20 1370.68 MA40 1349.90 MA60 1348.54



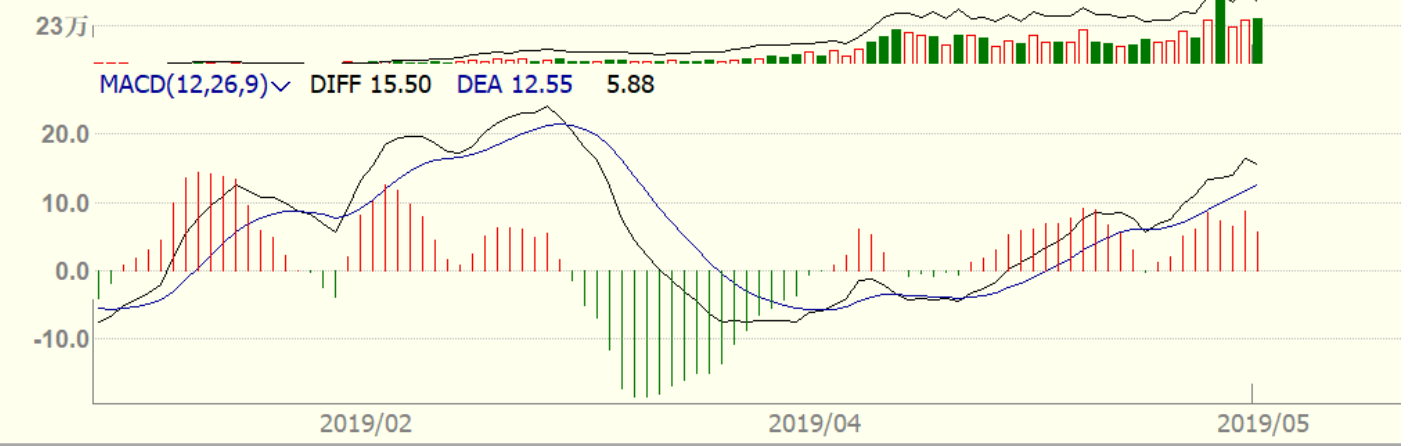
1909收1388,较上一交易日下跌1.10%  
 持仓量减少。  
 澳煤通关受限,蒙煤通关略有减少,需求端焦企利润回升,货价格小幅上涨,库存回升,竞价各地涨跌互现,成交量减少,短期偏强运行。

27日,焦煤成交量增加,基本面方面,低硫主焦煤钢厂焦炭,今日钢材,预计焦煤



340天

CJL 272842.00(46:54) OPID 208910.00



--

"

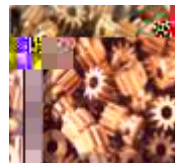
"



020-22139858



020-22139813



020-22139817



020-22139824

5

1007-1012

510623