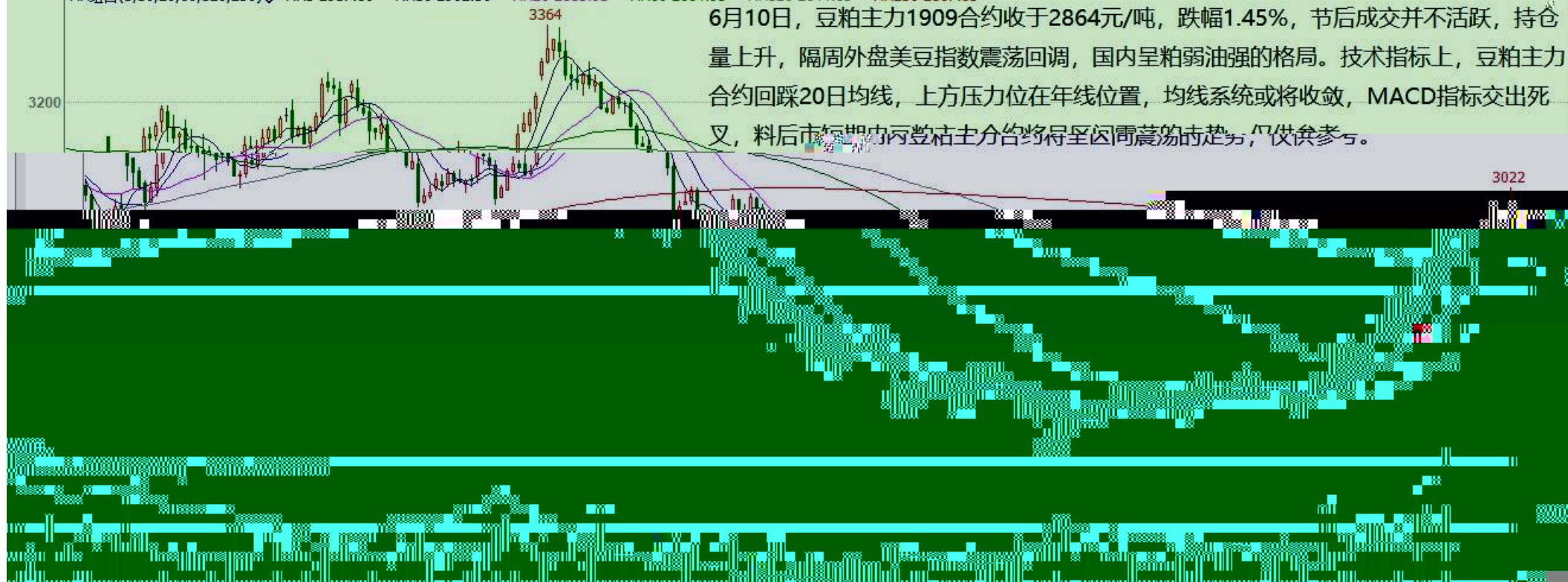


豆粕指数(DCE 1200) 日线

MA组合(5,10,20,60,120,250) MA5 2917.80 MA10 2902.50 MA20 2815.95 MA60 2664.93 MA120 2644.83 MA250 2867.83



郑棉1909(CZCE CF909) 日线



区间12700-13200, 仅供参考。

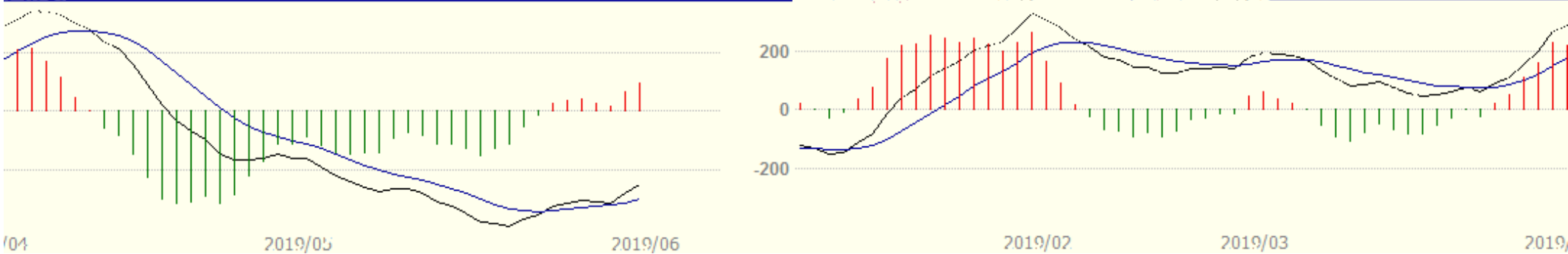
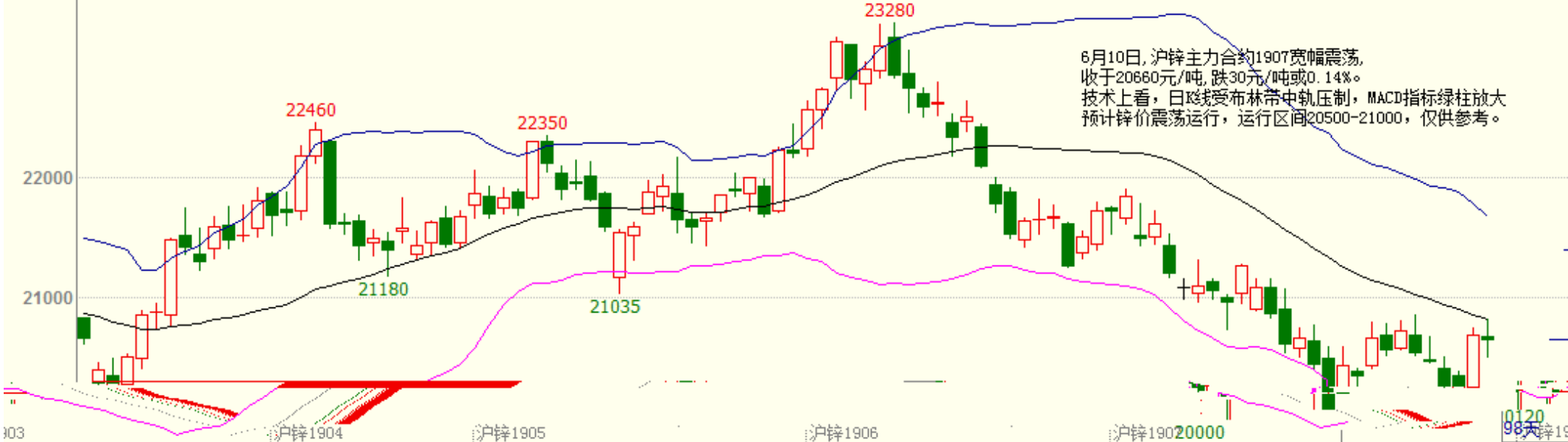
017

CLV 305202.99(5249) OPJ 559608.00



沪锌主连 (SHFE 2244) 日线

BOLL(26,26,2) MID 20820.77 TOP 21674.76 BOTTOM 19966.78



沪铝主连 (SHFE 2214) 日线

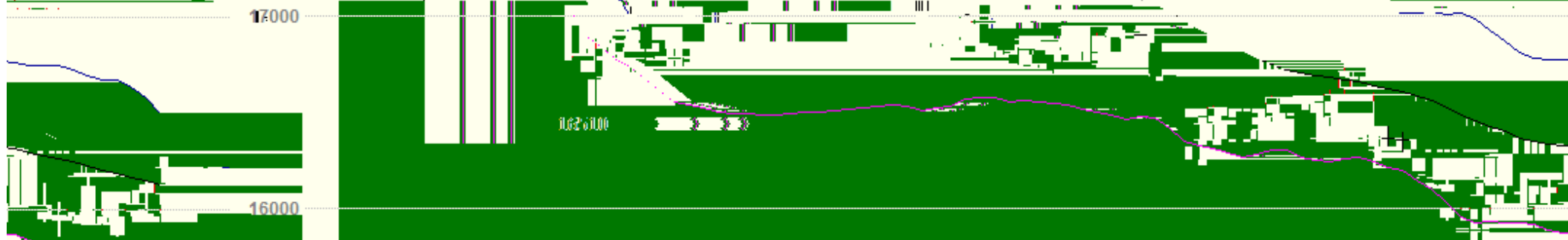
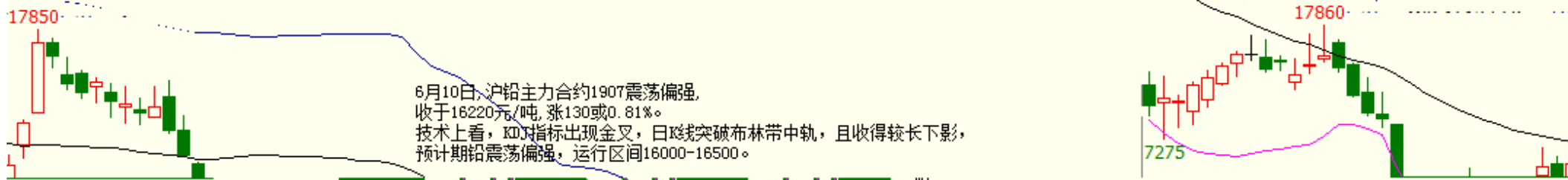
BOLL(26,26,2) MID 14150.00 TOP 14399.32 BOTTOM 13900.68

6月10日, 沪铝主力合约1907震荡运行, 收于13940元/吨, 跌10元/吨或0.07%。  
技术上看, KDJ指标跌入超卖区, 但MACD指标绿柱放大, 预计沪铝主力1907震荡运行, 运行区间13900-14100, 仅供参考。

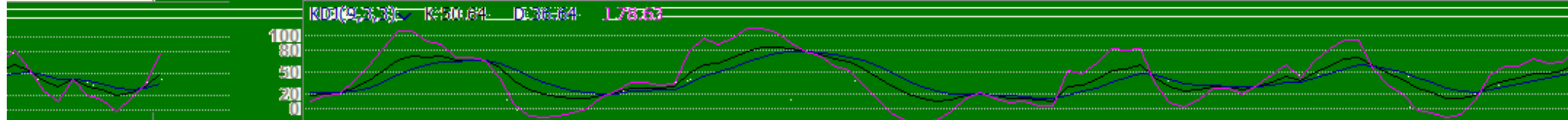


沪铅主连 (SHFE 2895) 日线

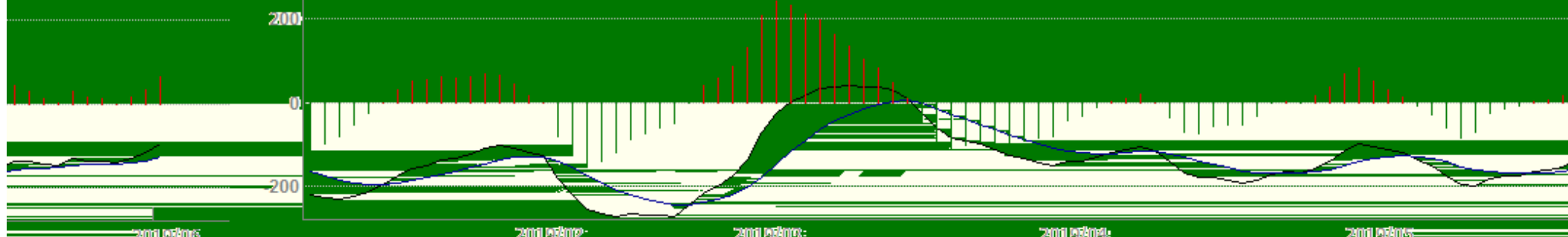
ROU (26,26,2) MID 16127.60 TOP 16407.10 BOTTOM 15759.10



98.5 沪铅1907 沪铅1909 沪铅1911 沪铅1913 沪铅1915 157500 16220



MACD(12,26,9) DIFF 93.98 DEA 122.14 67.11



沪铜1907(SHFE cu1907) 日线

MA组合(5,10,20,40,60,0) MA5 46230.00 MA10 46510.00 MA20 46986.50 MA40 47955.50 MA60 48364.00



6-10, 日内沪铜主力震荡整理, 暂获5日均线支撑, MACD指标绿柱实体持续

分析: DIFF及DEA下行趋势有所放缓, 短期铜价涨势暂缓, 但日线均线系统最



十债主连 (CFEX 8805) 日线 97.410 -0.060 / -0.06%  
MA组合(5,10,20,40,60,55) MA5 97.388 MA10 97.046 MA20 97.102 MA40 96.815 MA60 97.038



焦煤1909(DCE jm1909) 日线



成交量

CJL 247600.00(50:50) OPID 218246.00

23万

MACD(12,26,9)

0.0  
-20.0

2019/06

2019/02

2019/04



