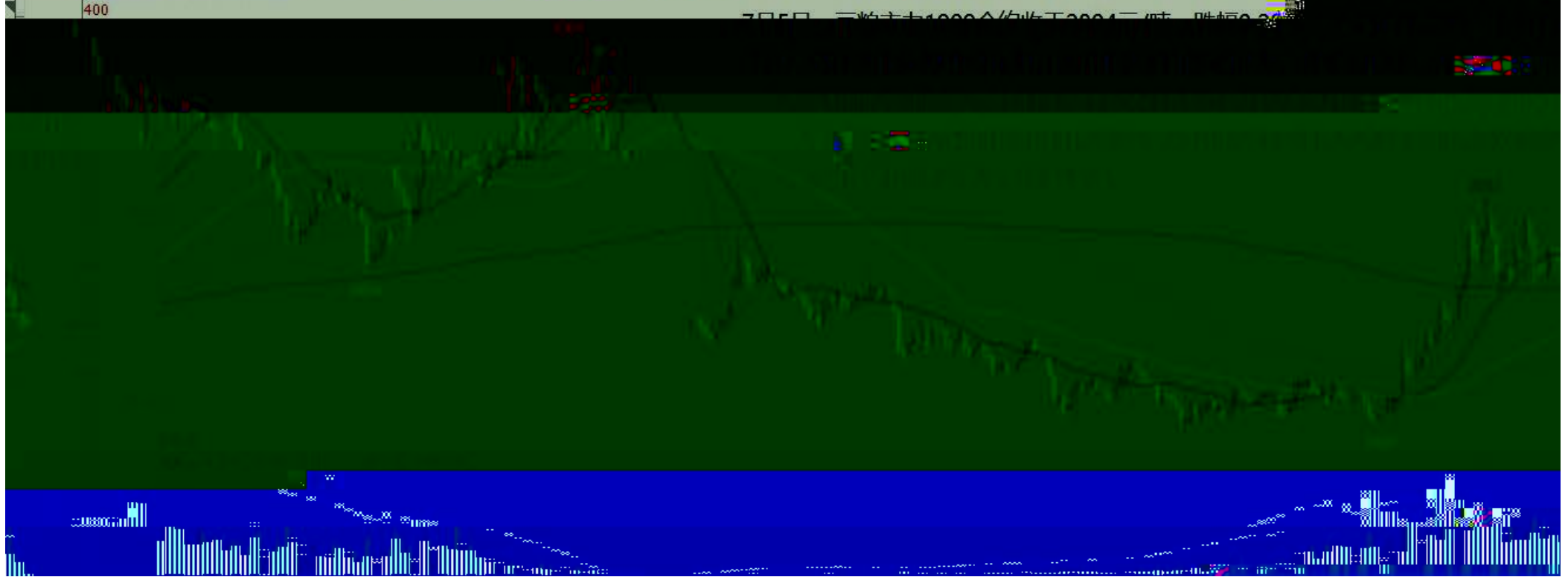


豆粕1909(DCE m1909) 日线

MA组合(5,10,20,60,120,250) MA5 2822.60 MA10 2859.50 MA20 2878.25 MA60 2765.27 MA120 2692.85 MA250 2829.98

400

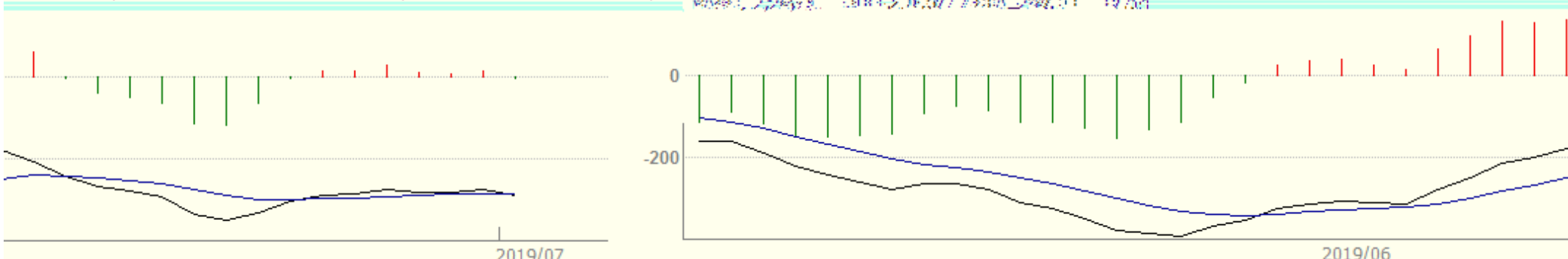
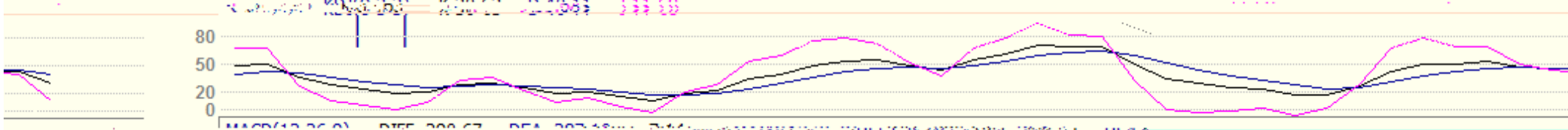
7月5日 豆粕主力1909合约收于2894元/吨 涨幅0.34%



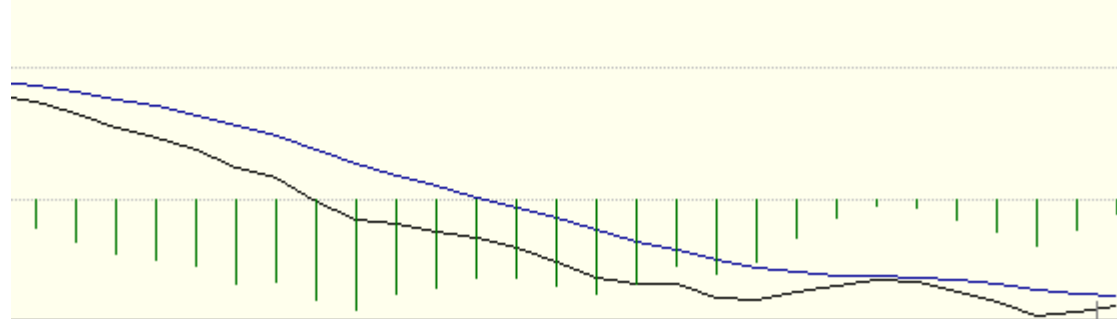
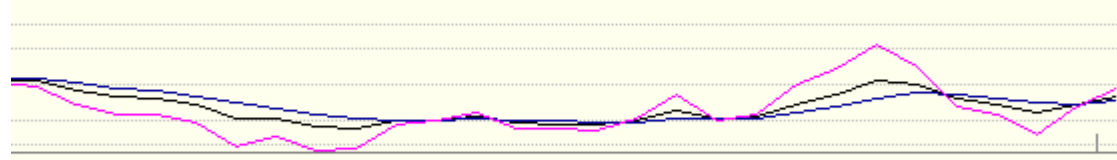
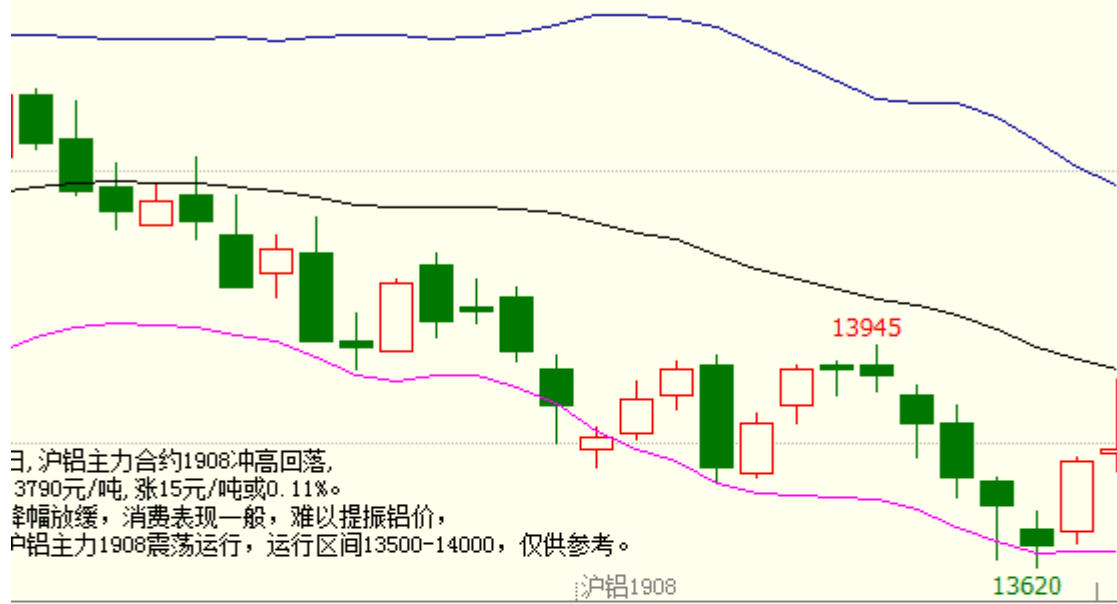


沪锌主连 (SHFE 2244) 日线

BOLL(26,26,2) MID 20095.19 TOP 20964.53 BOTTOM 19225.85



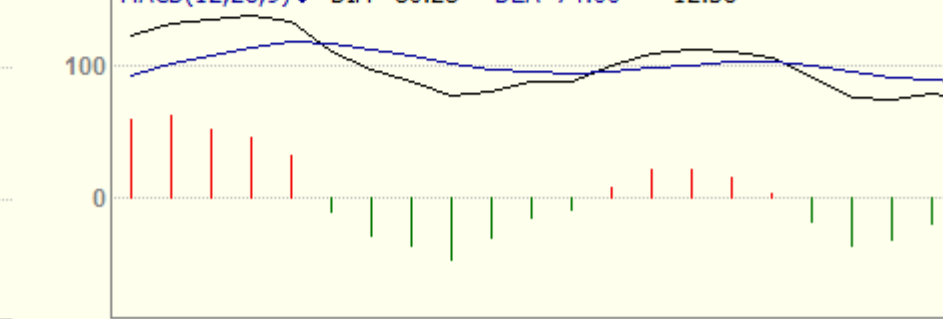
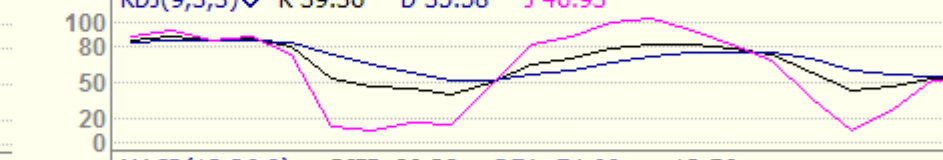
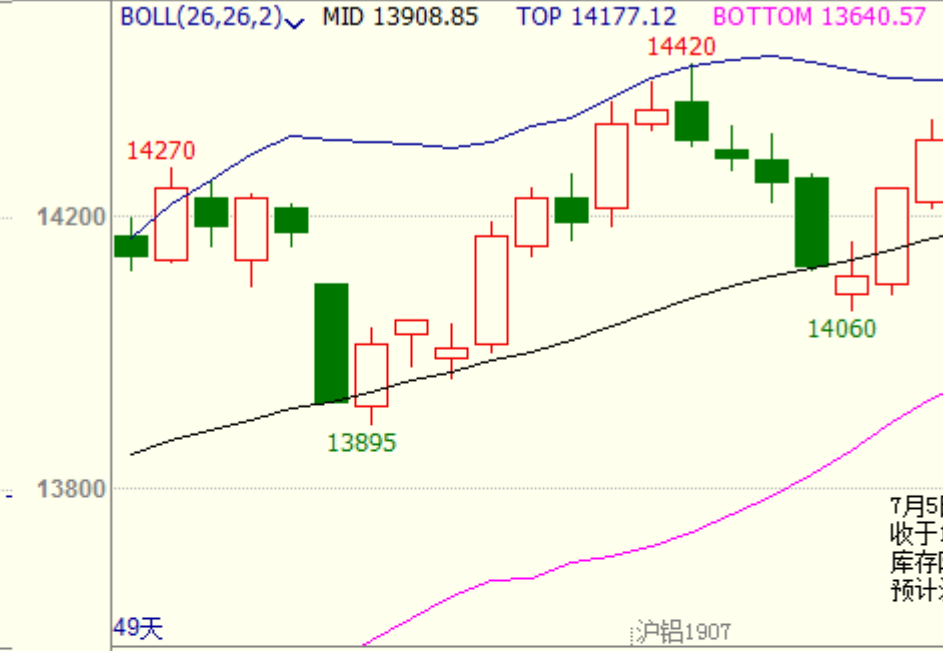
沪铝主力合约1908 日线



2019/06

2019/07

沪铝1907 日线



2019/05

沪铅主连 (SHFE 2895) 日线



沪铜1908(SHFE cu1908) 日线

MA组合(5,10,20,40,60,0) MA5 46570.00 MA10 46800.00 MA20 46667.50 MA40 46877.00 MA60 47601.83



7-5, 今日沪铜主力偏弱震荡, 连续四日收阴, 目前铜价已跌破布林中轨, 且失去全部近日均线支撑, 技术面继续走弱, 短期铜价或考验46000元/吨附近支撑。关注今晚美国非农数据。仅供参考。

CJL 70522.00(48:52) OPID 210286.00

13万



十债主连 (CFEEX 8805) 日线 98.040 -0.175 / -0.18%

MA组合(5,10,20,40,60,0) MA5 98.030 MA10 97.687 MA20 97.539 MA40 97.314 MA60 97.041

7月5日，短期资金利率回升但流动性仍属宽裕，国债期货缩量回调，小幅收跌。二年国债主力合约TS1909收于100.195元，较上日收盘价跌0.03%，总成交405手，持仓3329手；五年国债主力合约IF1909收于99.630元，较



焦煤1909(DCE jm1909) 日线

MA组合(5,10,20,40,60,0) MA5 1390.00 MA10 1389.25 MA20 1392.70 MA40 1385.81 MA60 1369.18





