

豆粕1909(DCE m1909) 日线

MA组合(5,10,20,60,120,250) MA5 2822.20 MA10 2816.10 MA20 2823.45 MA60 2803.53 MA120 2708.85 MA250 2815.07



7月23日，豆粕主力1909合约收于2814元/吨，涨幅0.14%，成交量大幅萎缩，持仓量下

降，隔夜美豆期货震荡偏弱，国内粕类油脂表现平稳。技术指标上，豆粕主力合约回调

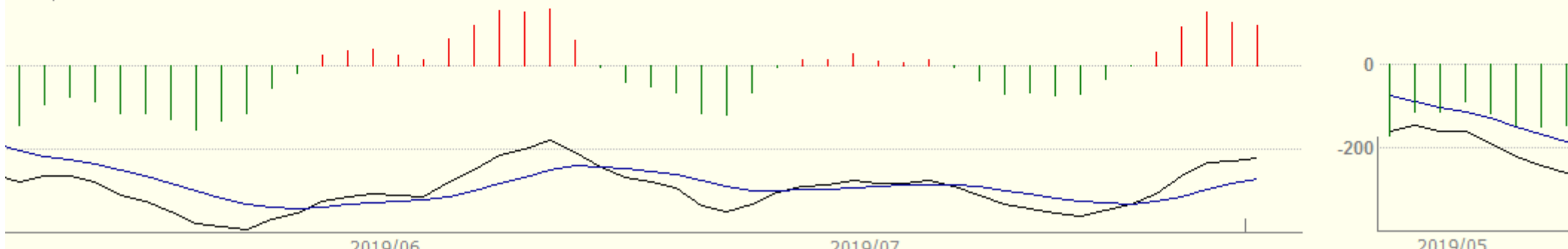
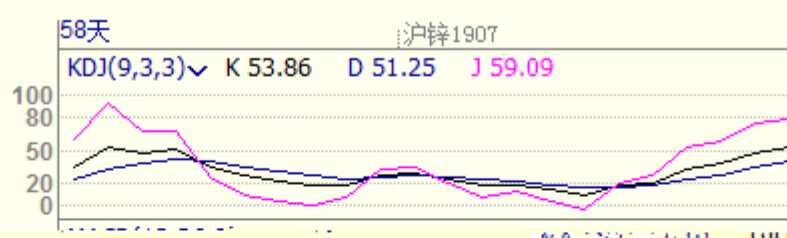
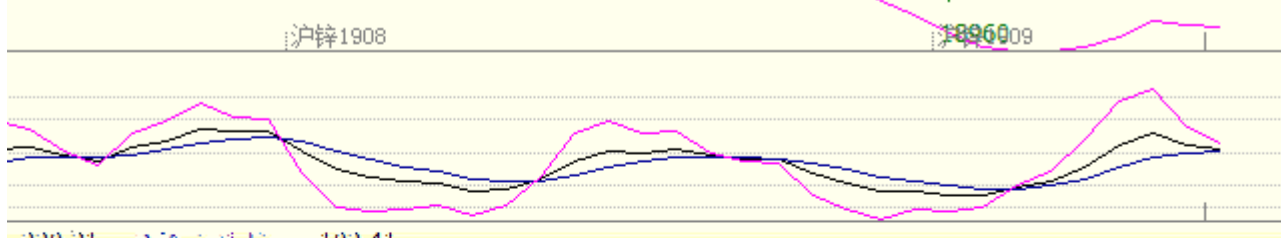
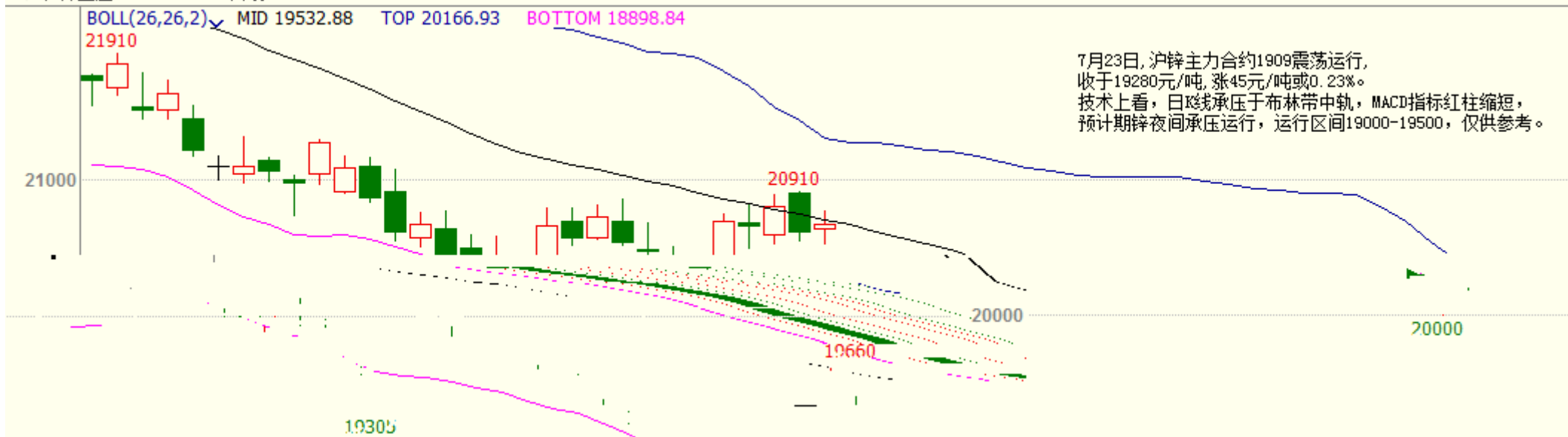
均线，短期均线上方，日线位置有支撑，日线位置有支撑，日线位置有支撑。



郑棉1909(ICE CF909) 日线

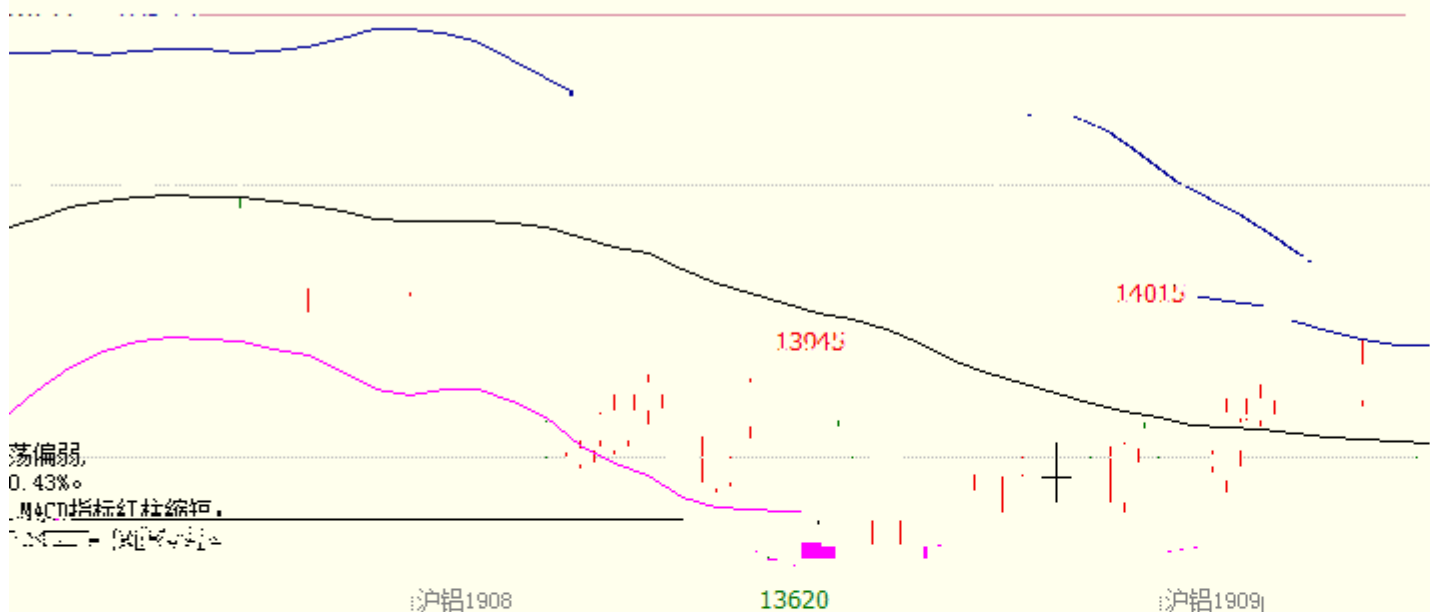


沪锌主连 (SHFE 2244) 日线

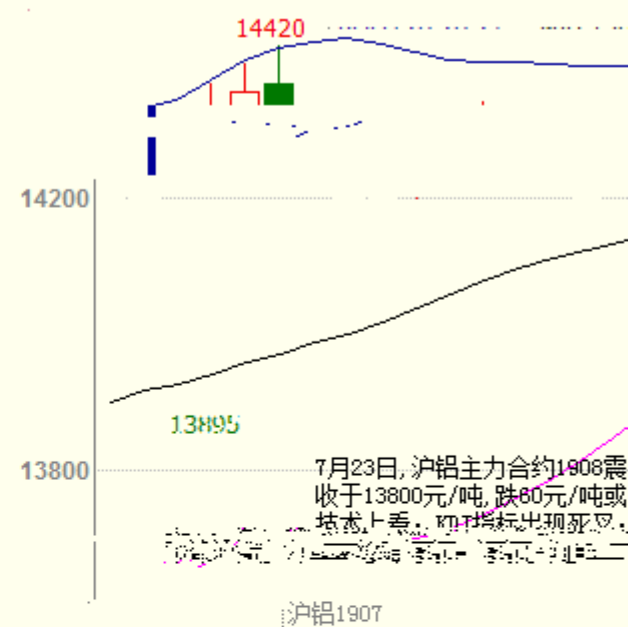


沪铝主连 (SHFE 2214) 日线

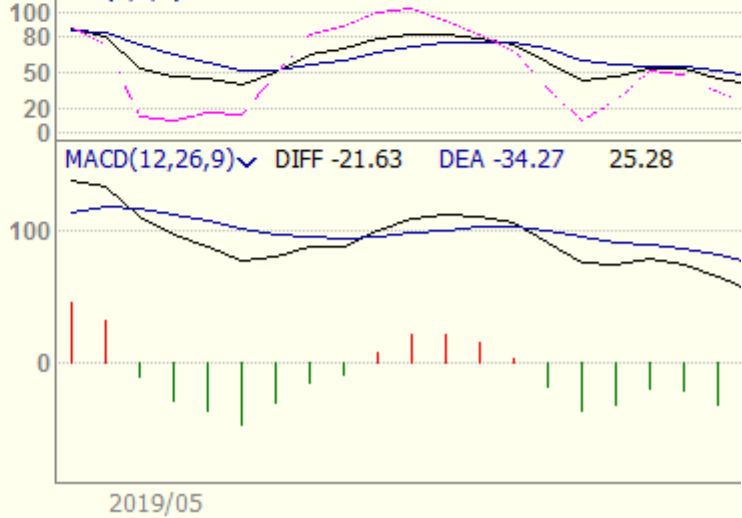
BOLL(26,26,2) MID 13820.77 TOP 13962.89 BOTTOM 13678.65



震荡偏弱，
0.43%。
MACD指标红柱缩短，
KDJ指标出现死叉。



KDJ(9,3,3) K 41.43 D 51.61 J 21.08



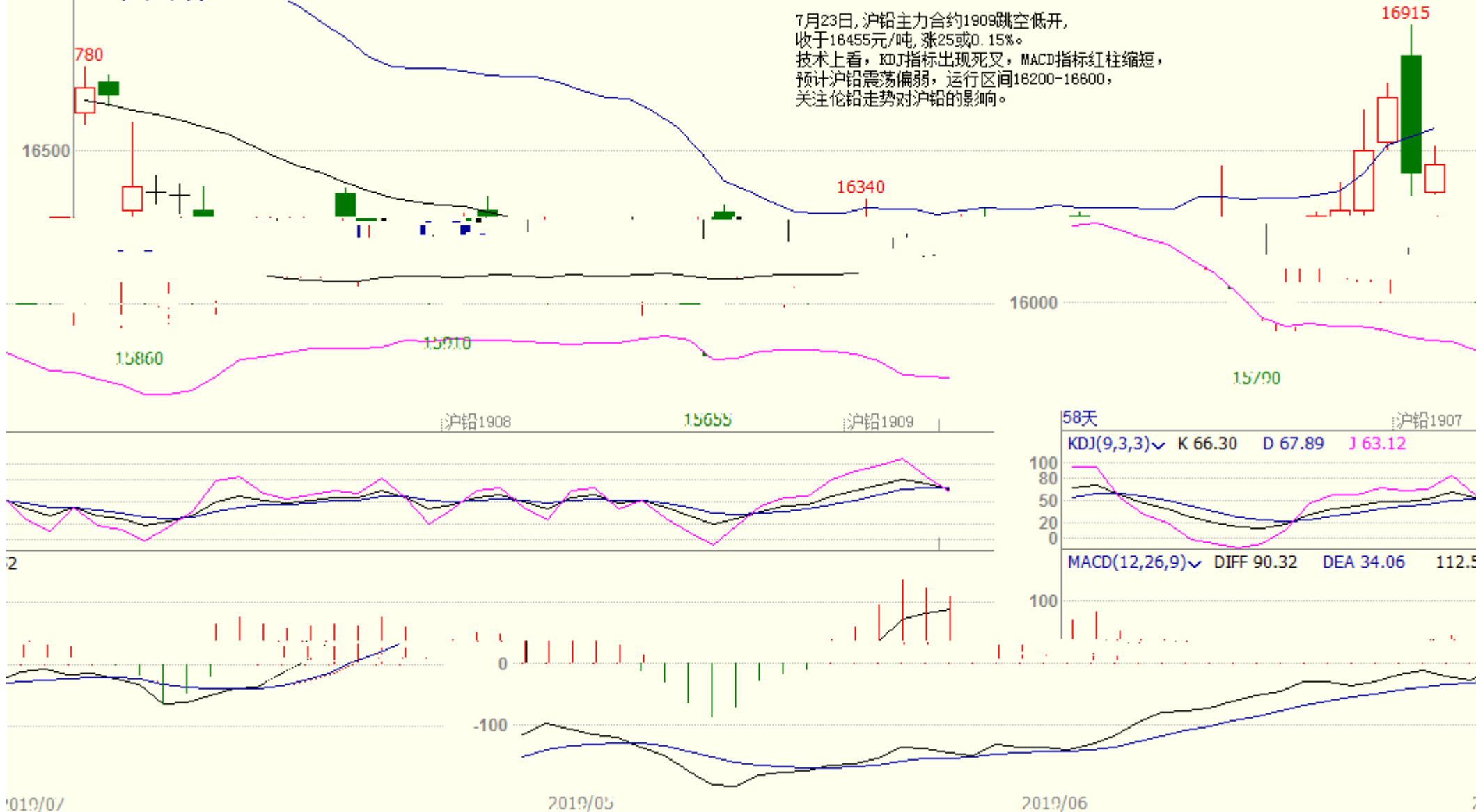
2019/06

2019/07

沪铅主连 (SHFE 2895) 日线

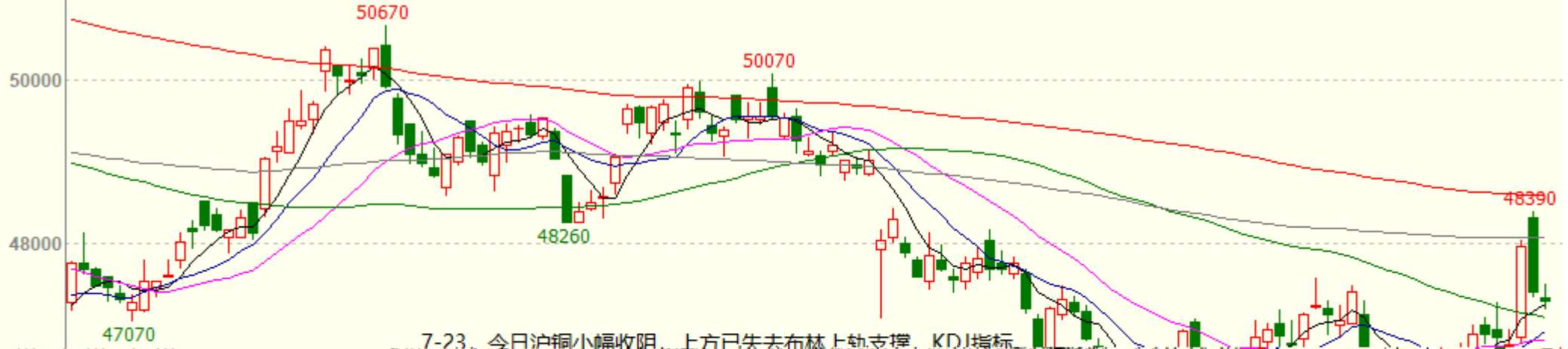
BOLL(26,26,2) MID 16165.38 TOP 16575.66 BOTTOM 15755.11

7月23日, 沪铅主力合约1909跳空低开, 收于16455元/吨, 涨25或0.15%。
技术上看, KDJ指标出现死叉, MACD指标红柱缩短, 预计沪铅震荡偏弱, 运行区间16200-16600, 关注伦铅走势对沪铅的影响。



沪铜1909(SHFE cu1909) 日线

MA组合(5,10,20,60,120,250) MA5 47264.00 MA10 46948.00 MA20 46830.00 MA60 47112.00 MA120 48076.67 MA250 48590.76



7-23 今日沪铜小幅收阴 上方已失去布林上轨支撑 KDJ指标

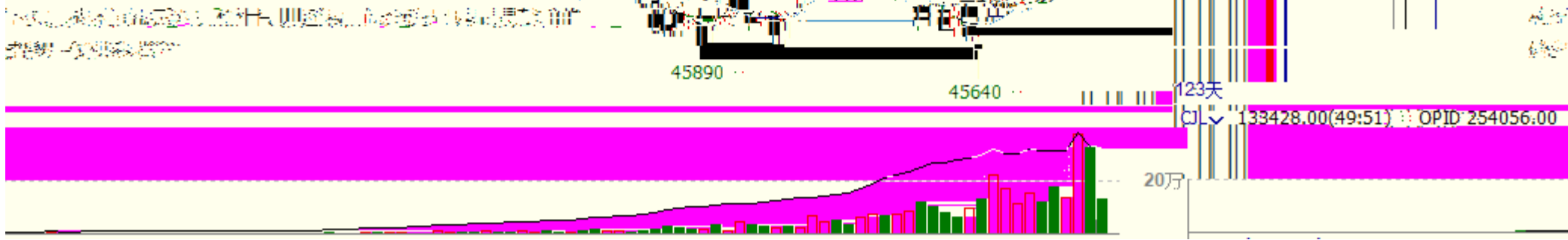
45890

45640

123天

133428.00(49:51) OPID 254056.00

20万



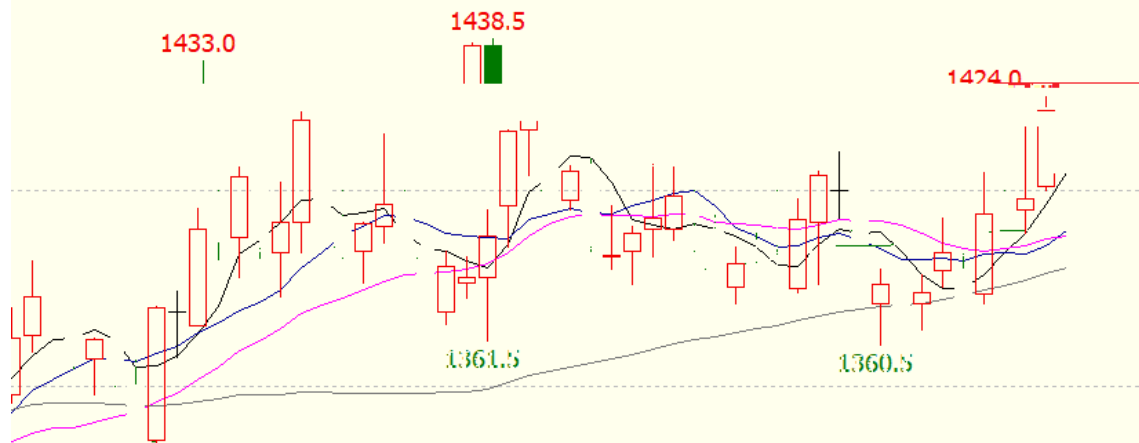
十债主连 (CFEEX 8805) 日线 98.380 0.005 / 0.01%

MA组合(5,10,20,40,60,0) MA5 98.272 MA10 98.190 MA20 98.010 MA40 97.639 MA60 97.392

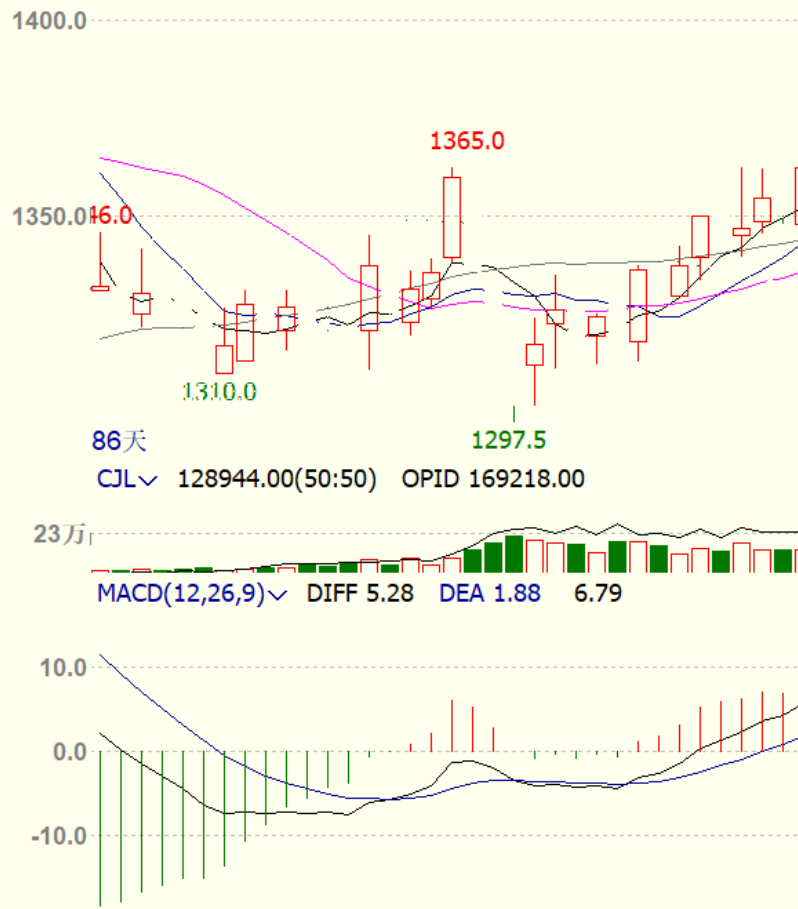
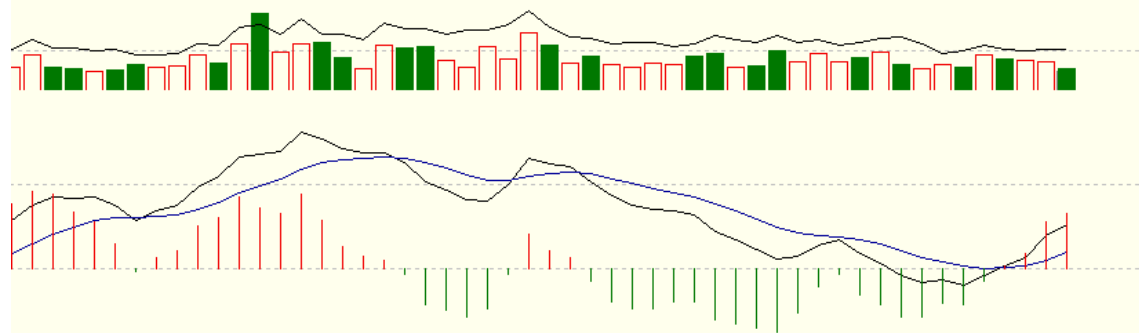
7月23日，央行接近等量续作到期MLF，国债期货高位回落，震荡收平。二年国债主力合约TS1909收于100.240元，与上日持平，总成交2006手，持仓4931手；五年国债主力合约TF1909收于99.825元，较



MA组合(5,10,20,40,60,0) MA5 1404.50 MA10 1389.75 MA20 1388.55 MA40 1390.92 MA60 1390.22



17日,焦煤1909收1413.5,较上一交易日上上涨0.21%,
成交量减少,持仓量减少。
基本面方面,澳煤通关受限,蒙煤通关高位,需求端焦企利润低位,
低硫主焦煤现货价格继续下跌,
钢厂焦炭库存高位,
今日钢材成交价各地涨跌互现,成交量减少。
预计焦煤近期偏弱运行。



86天
CJL 128944.00(50:50) OPID 169218.00

MACD(12,26,9) DIFF 5.28 DEA 1.88 6.79

