

豆粕1909(DCE m1909) 日线

MA组合(5,10,20,60,120,250) MA5 2812.00 MA10 2820.20 MA20 2815.55 MA60 2811.57 MA120 2711.65 MA250 2812.89

3365

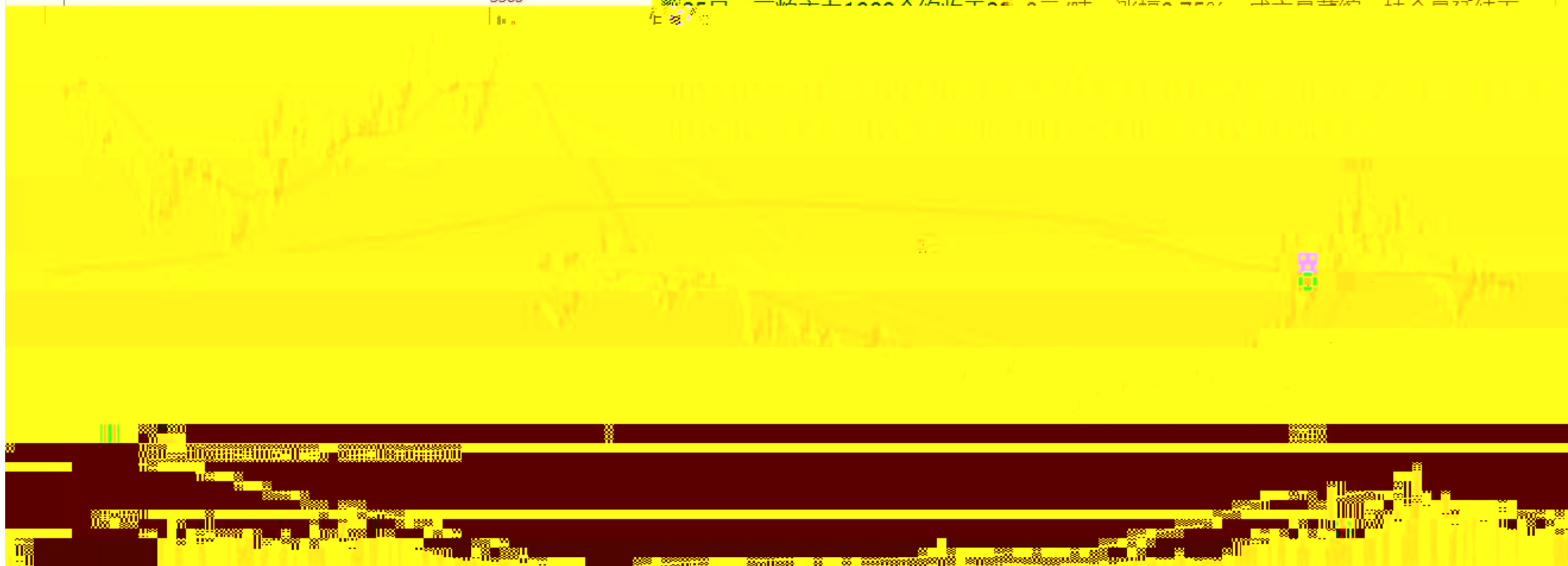
日期  
任意

持仓量1000个合约以下

涨幅0.5%

成交量萎缩

持仓量翻倍



郑棉1909 (CZCE CF909) 日线

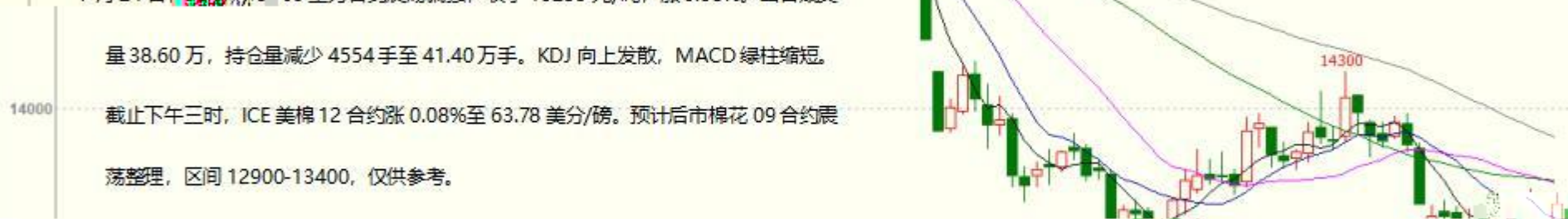


7月24日, 郑棉1909主力合约震荡偏强, 收于13255元/吨, 涨0.38%。当日成交

量38.60万, 持仓量减少4554手至41.40万手。KDJ向上发散, MACD绿柱缩短。

截止下午三时, ICE美棉12合约涨0.08%至63.78美分/磅。预计后市棉花09合约震

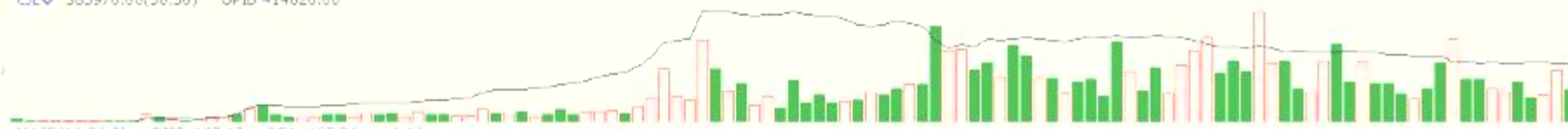
荡整理, 区间12900-13400, 仅供参考。



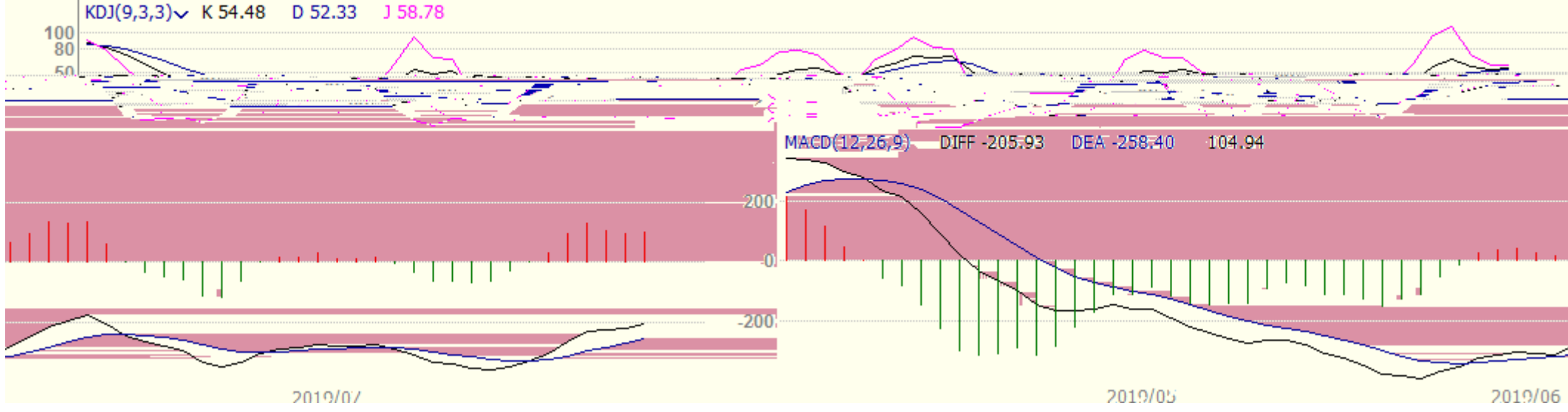
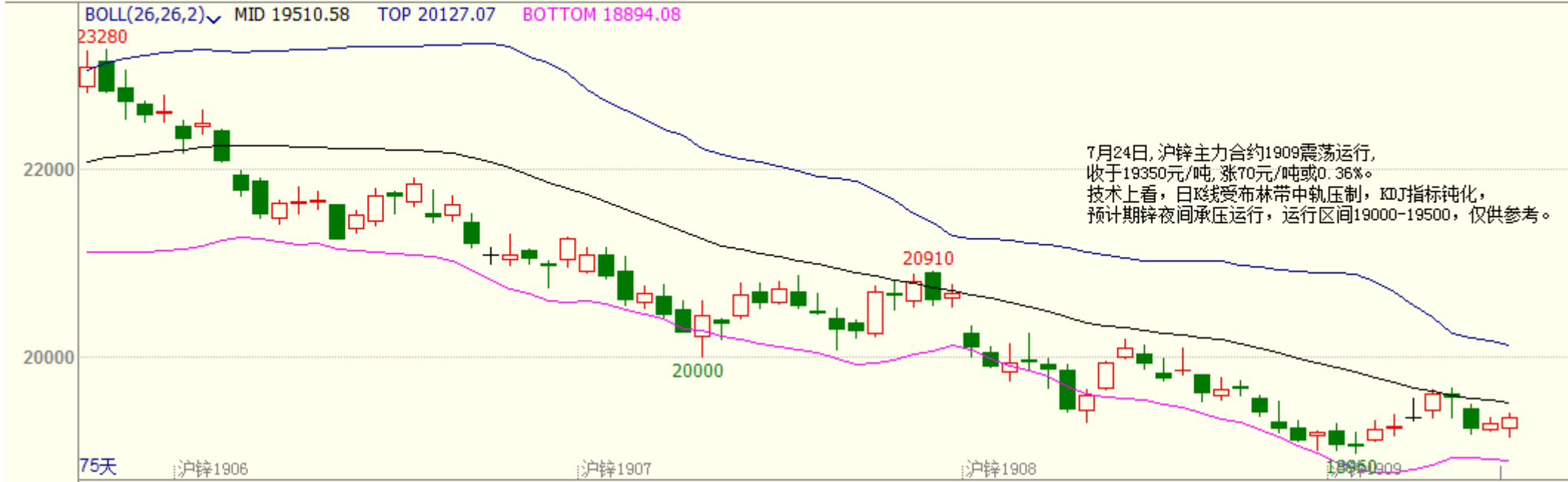
122天

CJL 385970.00(50:50) OPID 414020.00

00)



沪锌主连 (SHFE 2244) 日线

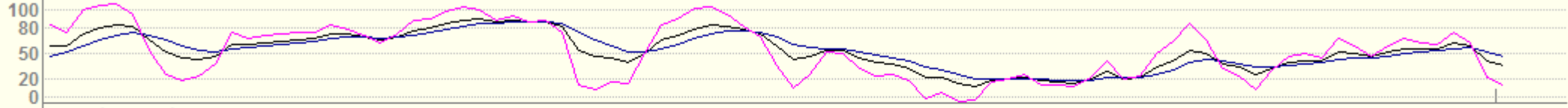


行情名称: 沪铝1909

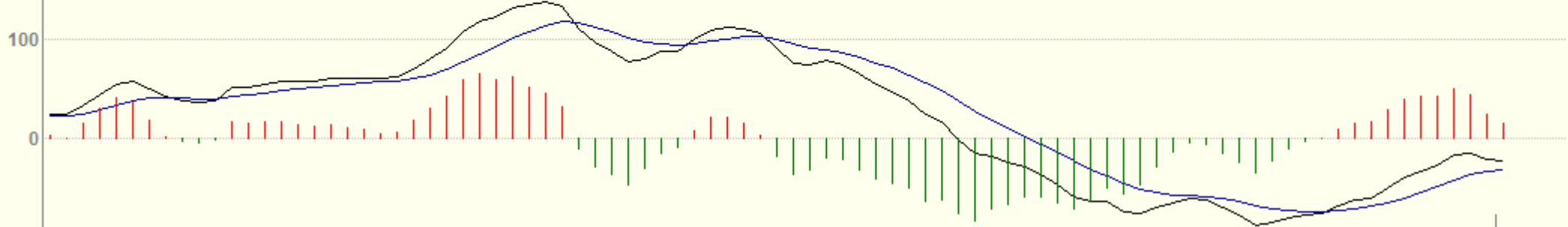
BOLL(26,26,2) MID 13820.00 TOP 13962.58 BOTTOM 13677.42



KDJ(9,3,3) K 35.17 D 46.13 J 13.25

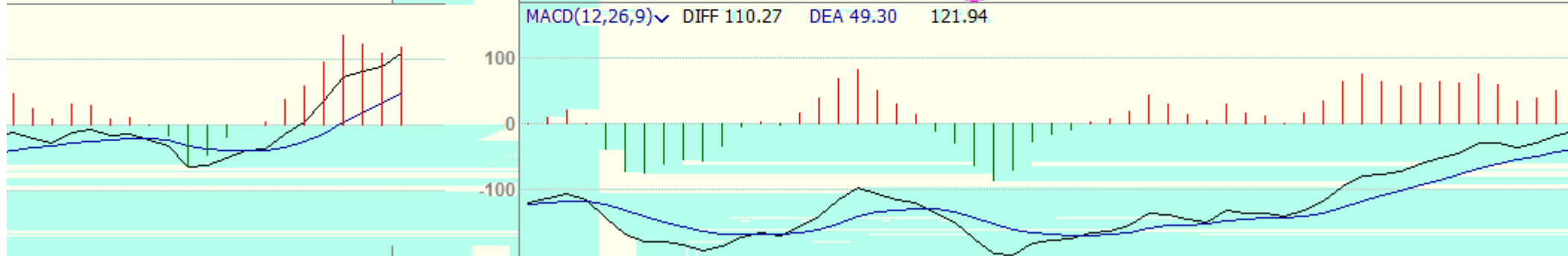
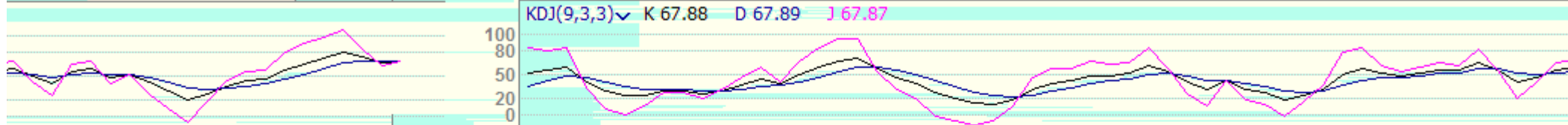


MACD(12,26,9) DIFF -23.54 DEA -32.13 17.17



2019/04 2019/05 2019/06 2019/07

沪铅主连 (SHFE 2895) 日线



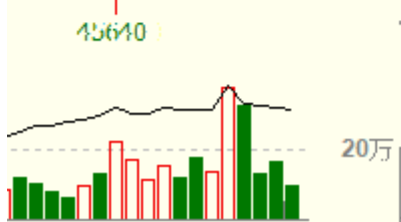
2019/07

2019/05

2019/06

沪铜1909(SHFE cu1909) 日线

MA组合(5,10,20,60,120,250) MA5 47358.00 MA10 47092.00 MA20 46815.50 MA60 47043.50 MA120 48070.92 MA250 48577.44

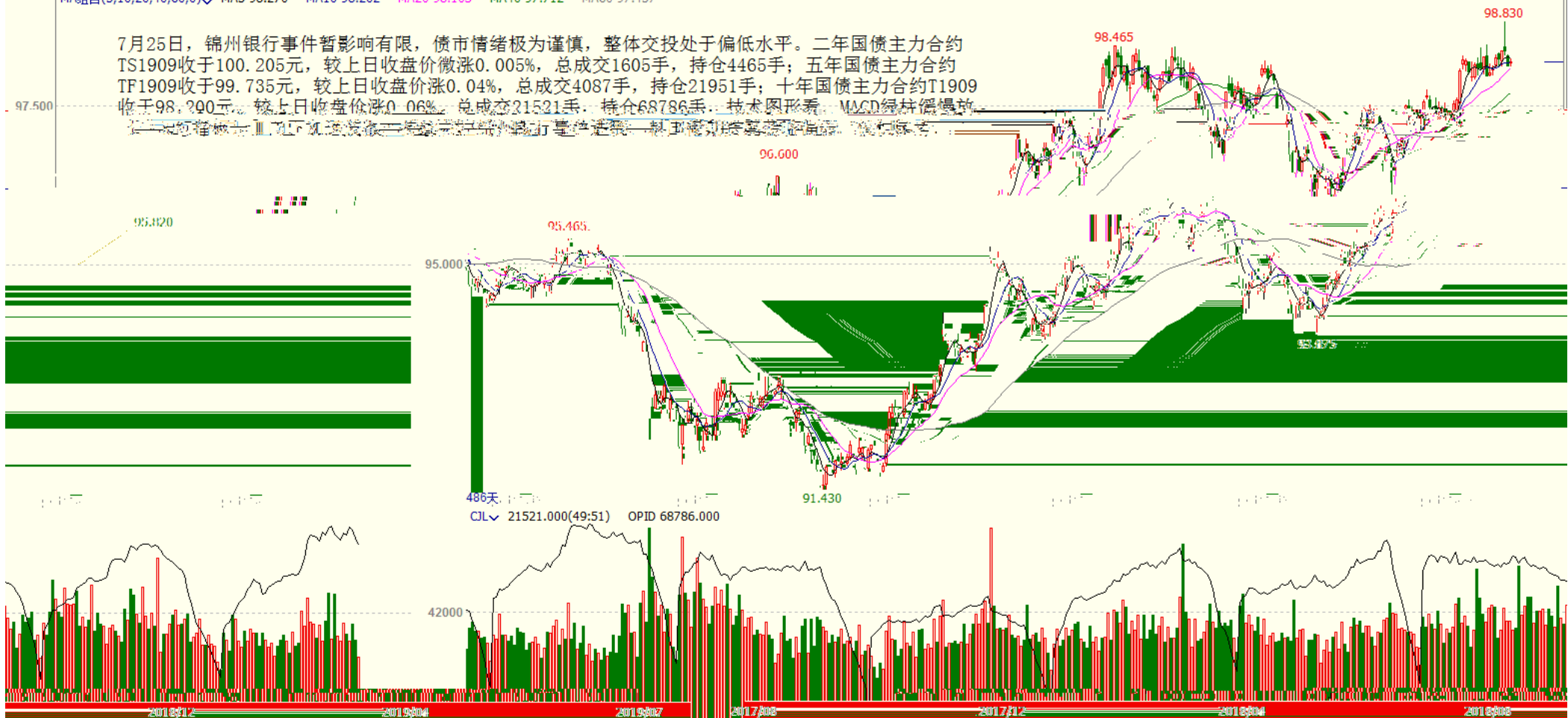


123天  
CJL 98330.00(50:50) OPID 245950.00

十债主连 (CFEX 8805) 日线 98.200 0.055 / 0.06%

MA组合(5,10,20,40,60,0) MA5 98.270 MA10 98.202 MA20 98.103 MA40 97.712 MA60 97.457

7月25日, 锦州银行事件暂影响有限, 债市情绪极为谨慎, 整体交投处于偏低水平。二年国债主力合约TS1909收于100.205元, 较上日收盘价微涨0.005%, 总成交1605手, 持仓4465手; 五年国债主力合约TF1909收于99.735元, 较上日收盘价涨0.04%, 总成交4087手, 持仓21951手; 十年国债主力合约T1909收于98.200元, 较上日收盘价涨0.06%, 总成交21521手, 持仓68786手。技术图形看, MACD绿柱继续放大, 短期趋势依然偏弱, 建议观望。



焦煤1909(DCE jm1909) 日线

MA5 1404.50 MA10 1389.75 MA20 1389.55 MA40 1390.93 MA60 1390.32



收1413.5, 较上一交易日上上涨0.21%,  
 成交量减少。  
 煤通关受限, 蒙煤通关高位, 需求端焦企利润低位,  
 价格继续下跌,  
 低位,  
 各地涨跌互现, 成交量减少。  
 弱势运行。



86天  
 CJL 128944.00(50:50) OPID 169218.00



2019/07 2019/08 2019/09 2019/10 2019/11 2019/12



