

K

豆粕2001(DCE m2001) 日线

MA组合(5,10,20,60,120,250) MA5 2881.20 MA10 2852.70 MA20 2847.90 MA60 2878.40 MA120 2779.18 MA250 2933.74

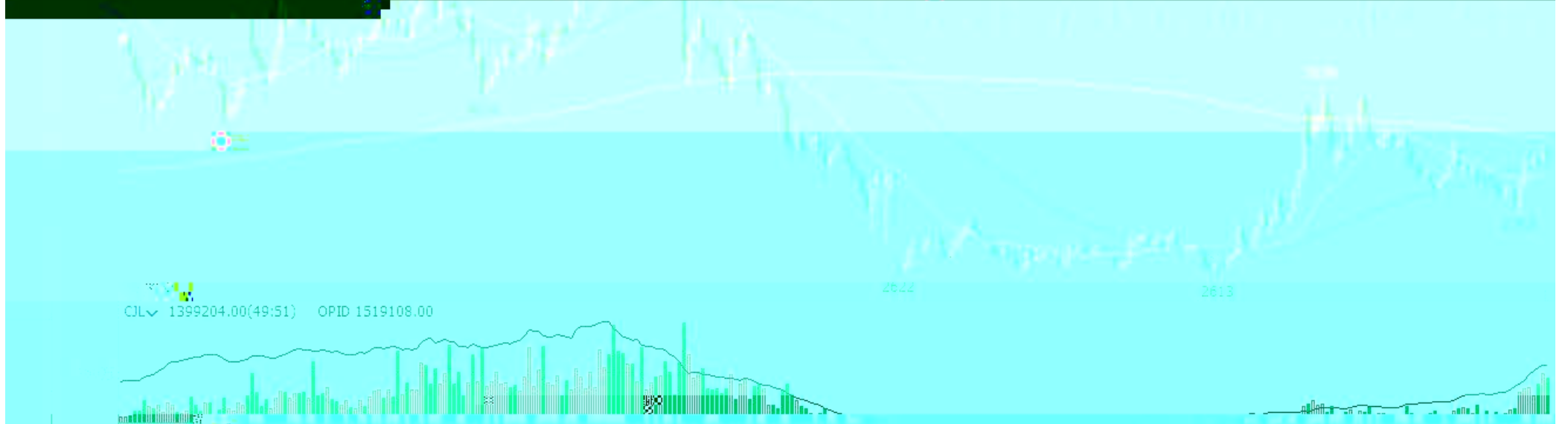
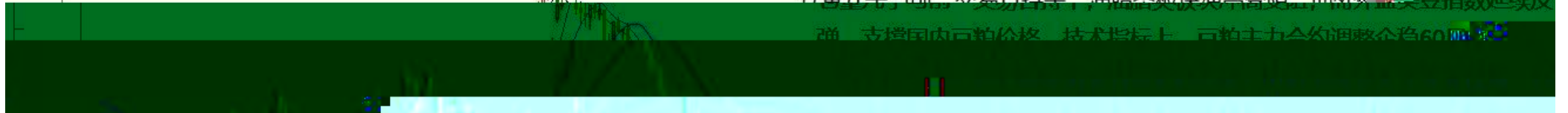
8月12日，豆粕主力2001合约收于2884元/吨，跌幅0.45%，成交量略降，持

仓量几乎与前一交易日持平，油脂类板块冲高受阻，而外盘大豆指数延续反

弹，支撑国内豆粕价格。技术指标上，豆粕主力合约调整企稳60日均线

3500

3539



K

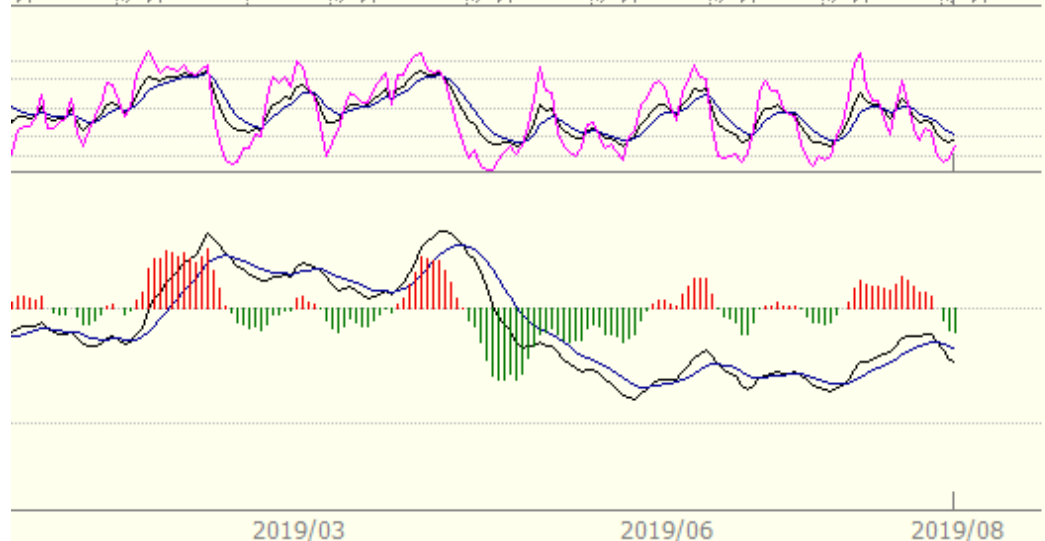


K

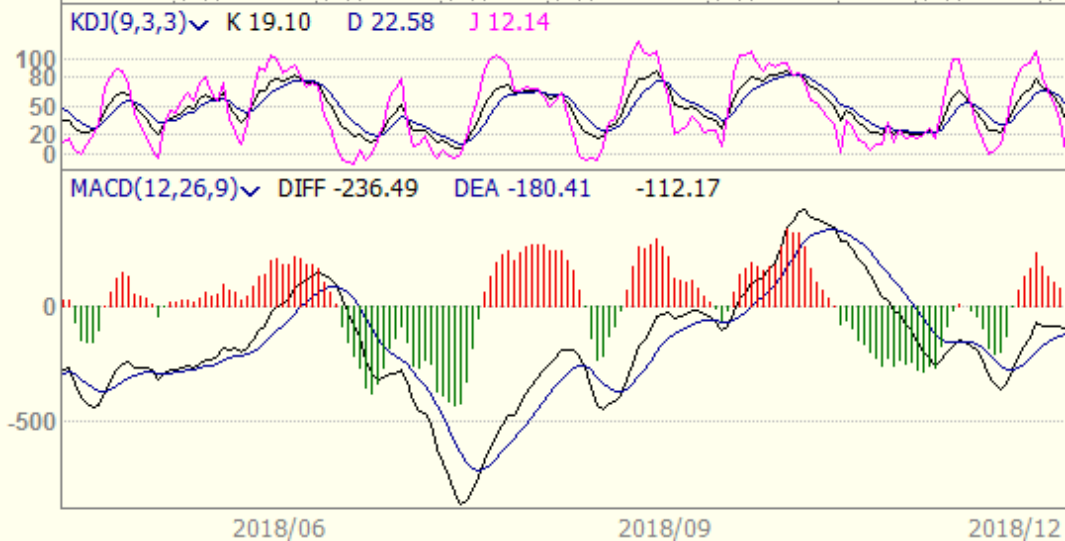
沪锌主连 (SHFE 2244) 日线



沪锌1902 沪锌1903 沪锌1905 沪锌1906 沪锌1907 沪锌1908 沪锌1909 沪锌1910



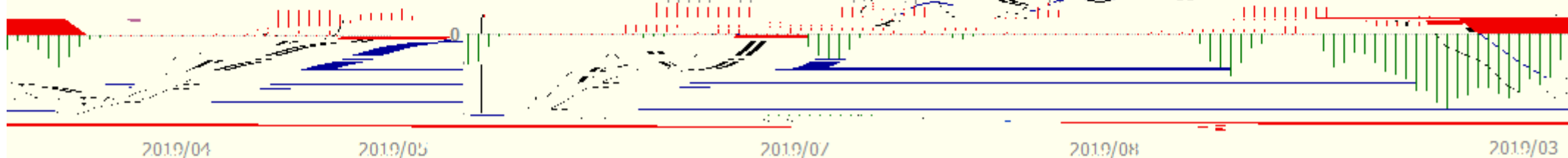
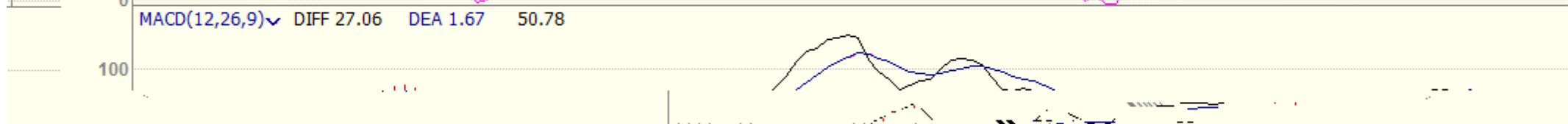
329天 沪锌1807 沪锌1808 沪锌1809 沪锌1810 沪锌1811 沪锌1901



K

沪铝主连 (SHFE 2214) 日线

BOLL(26,26,2) MID 13860.58 TOP 14031.21 BOTTOM 13689.95



2019/04 2019/05 2019/07 2019/08 2019/03

K

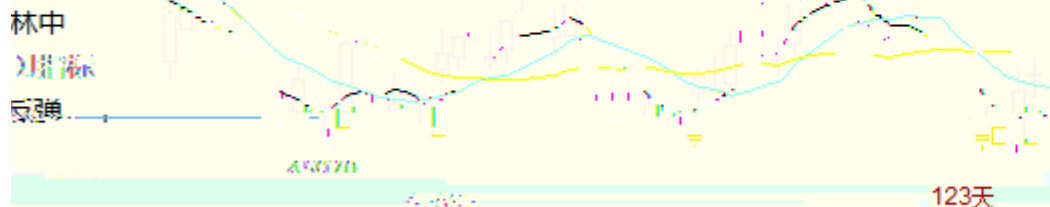
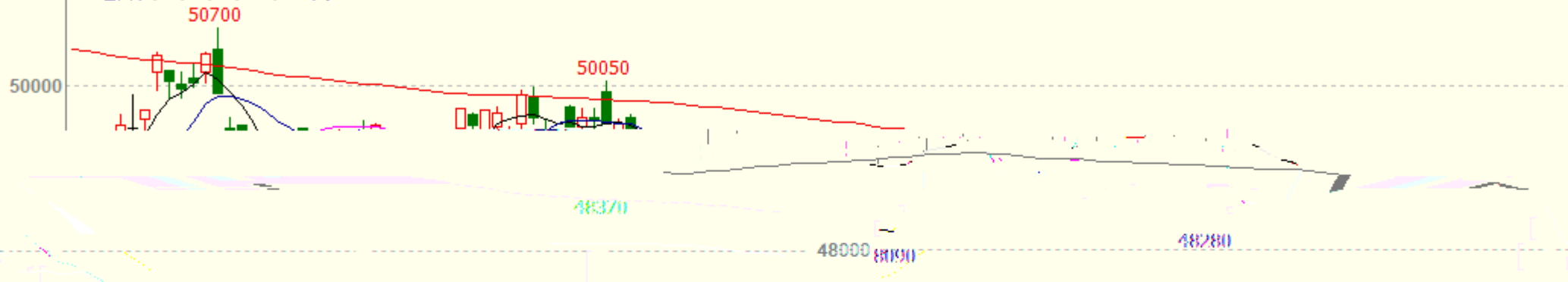
沪铅主连 (SHFE 2895) 日线



K

沪铜1910(SHFE cu1910) 日线

MA组合(5,10,20,60,120,250) MA5 46418.00 MA10 46545.00 MA20 46864.00 MA60 46790.67 MA120 47949.08 MA250 48480.48



8-12, 今日沪铜主力震荡运行, 收获十字星, 上方承压布  
 织紧密, 上冲难以持久, MACD绿柱持续缩短, K  
 全叉后向上运行. 技术指标有所好转, 但难言乐观. 铜价  
 持续性还有待观察. 仅供参考.

123天

MV(10,20) 151240.00(50:50) 106234.05 72817.16

20万  
10万

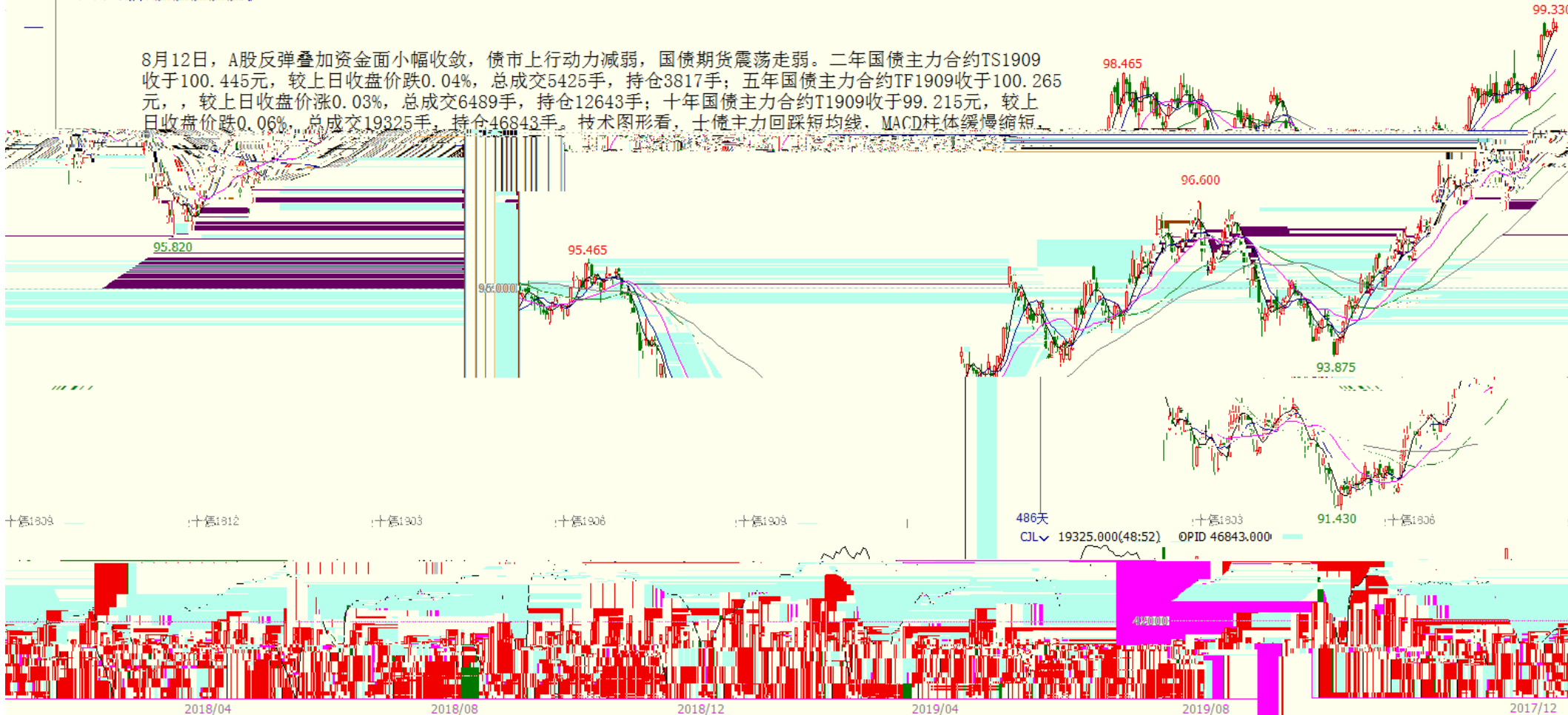


K

十年债主连 (CFEEX 8805) 日线 99.215 -0.055 / -0.06%

MA5:99.162 MA10:99.852 MA20:99.531 MA30:99.531 MA60:97.701 MA120:96.245 MA250:95.820 MA500:95.000

8月12日，A股反弹叠加资金面小幅收敛，债市上行动力减弱，国债期货震荡走弱。二年国债主力合约TS1909收于100.445元，较上日收盘价跌0.04%，总成交5425手，持仓3817手；五年国债主力合约TF1909收于100.265元，较上日收盘价涨0.03%，总成交6489手，持仓12643手；十年国债主力合约T1909收于99.215元，较上日收盘价跌0.06%，总成交19325手，持仓46843手。技术图形看，十债主力回踩短均线，MACD柱体缓慢缩短。



十债1808 十债1812 十债1903 十债1906 十债1909 486天 十债1903 十债1906

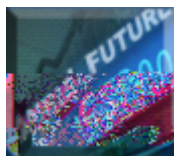
CJL 19325.000(48:52) OPID 46843.000

2018/04 2018/08 2018/12 2019/04 2019/08 2017/12

--

"

"



020-22139858



020-22139813



020-22139817



020-22139824

5

1007-1012

510623