

K

豆粕2001 (DCE m2001) 日线

MA组合(5,10,20,60,120,250) MA5 2891.40 MA10 2893.60 MA20 2895.90 MA60 2890.37 MA120 2794.19 MA250 2924.04

3539

8月22日, 豆粕主力2001合约收于2924元/吨, 涨幅1.50%, 成交量与持仓量均

高, 突破
力, 料后

国内市场。技术指标上, 豆粕主力合约呈震荡偏强的走势, 盘中两次冲
年线压力位, 短周期均线拐头上行, 摆动类指标亦偏强, 反弹势头较强

市短期内豆粕主力合约延续震荡反弹的走势, 仅供参考。

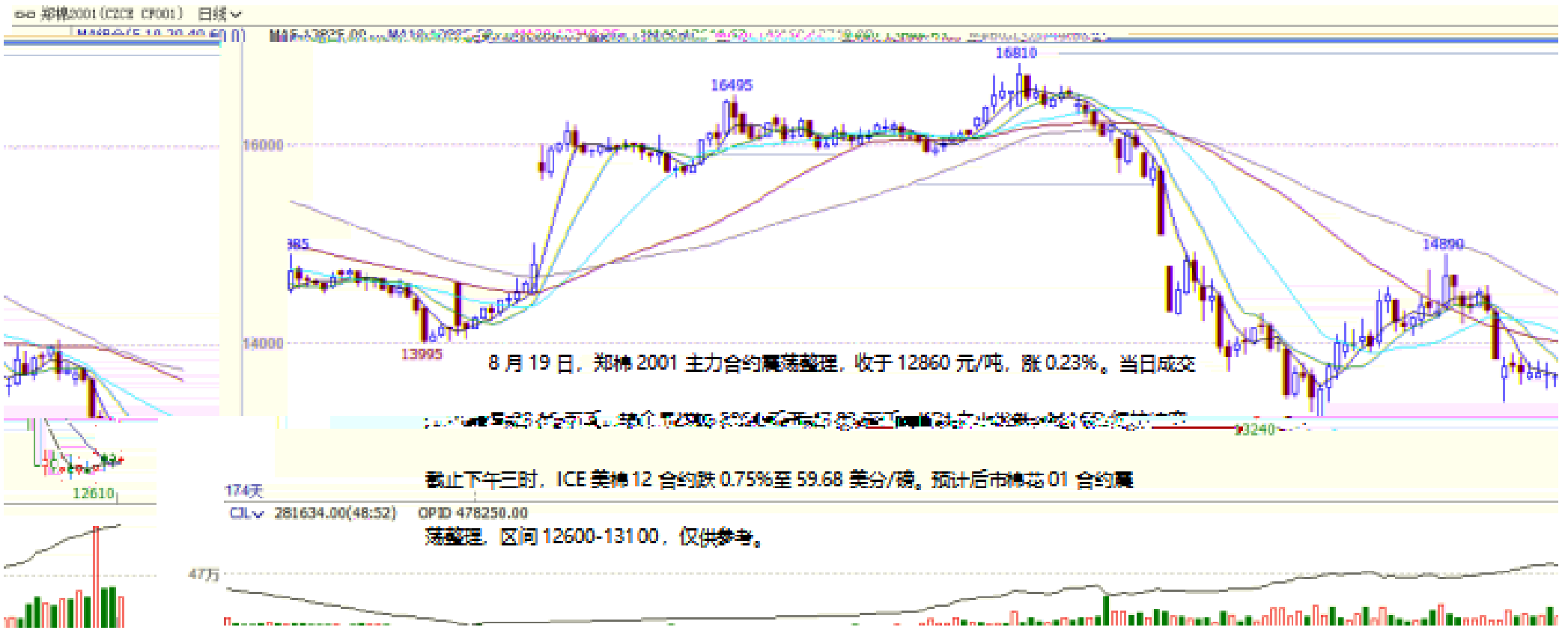
3000

3024

3058



K



K

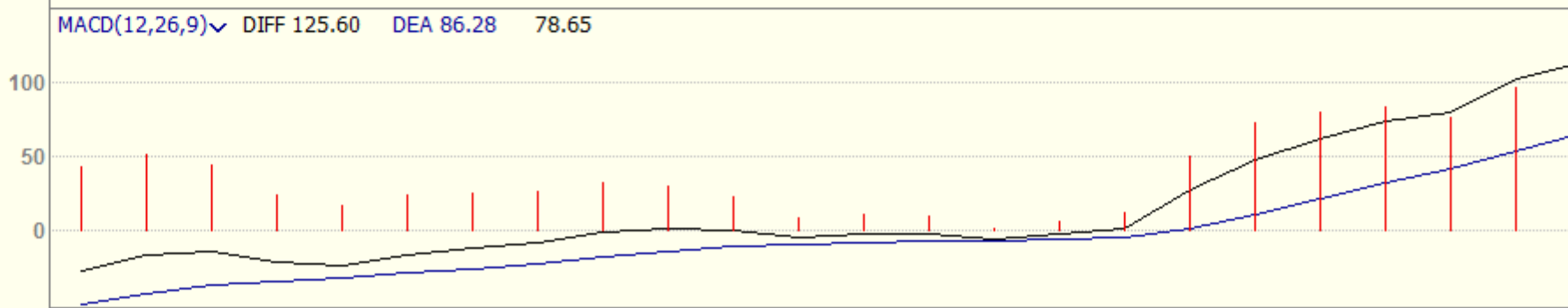
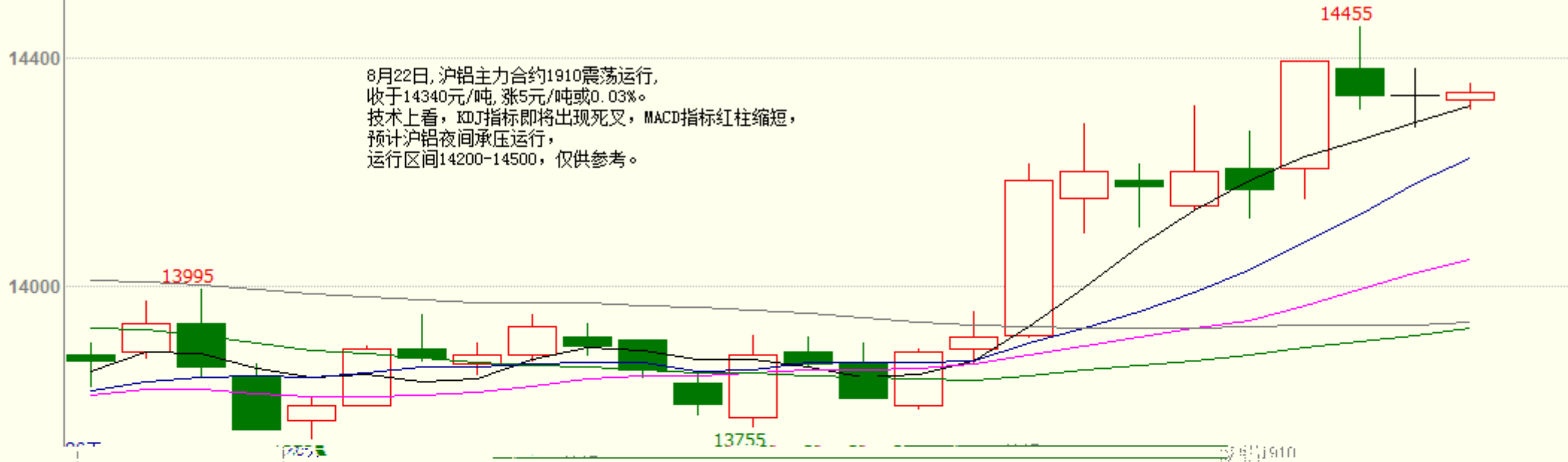
沪锌主连 (SHFE 2244) 日线



K

沪铝主连 (SHFE 2214) 日线

MA组合(5,10,20,40,60,0) MA5 14315.00 MA10 14224.50 MA20 14045.50 MA40 13925.75 MA60 13935.92

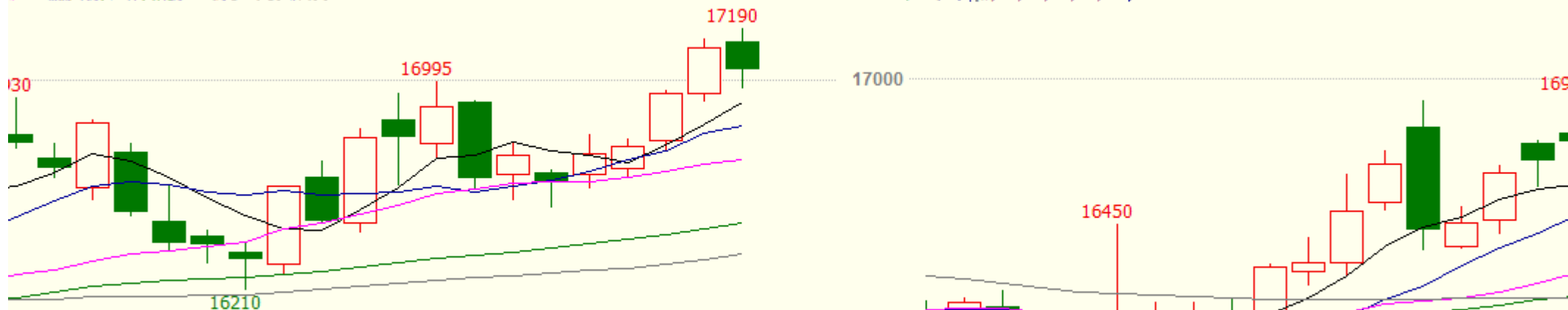


2019/08

K

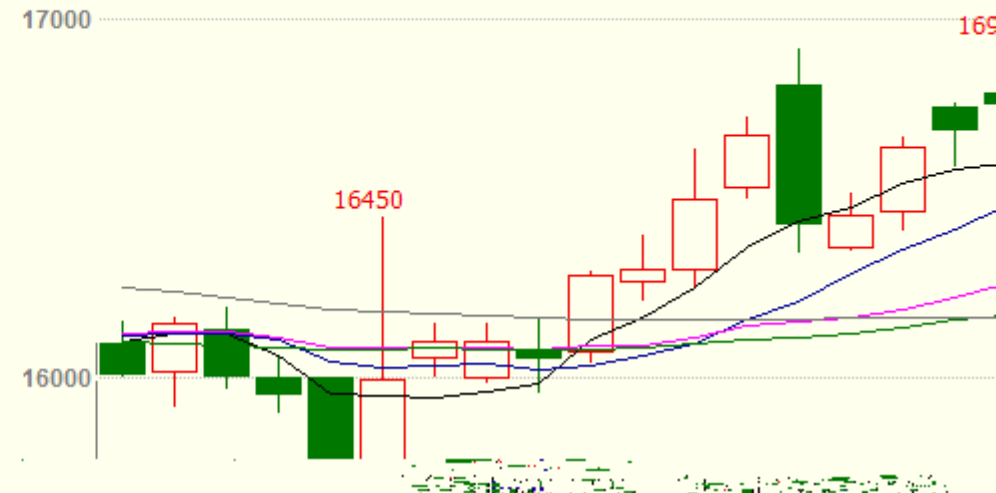
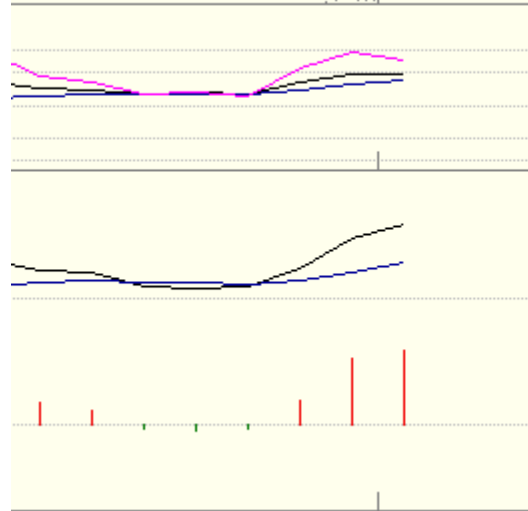
沪铅主连 (SHFE 2895) 日线

MA5: 16917.00 MA10: 16823.50 MA20: 16603.25 MA40: 16461.25 MA60: 16340.22

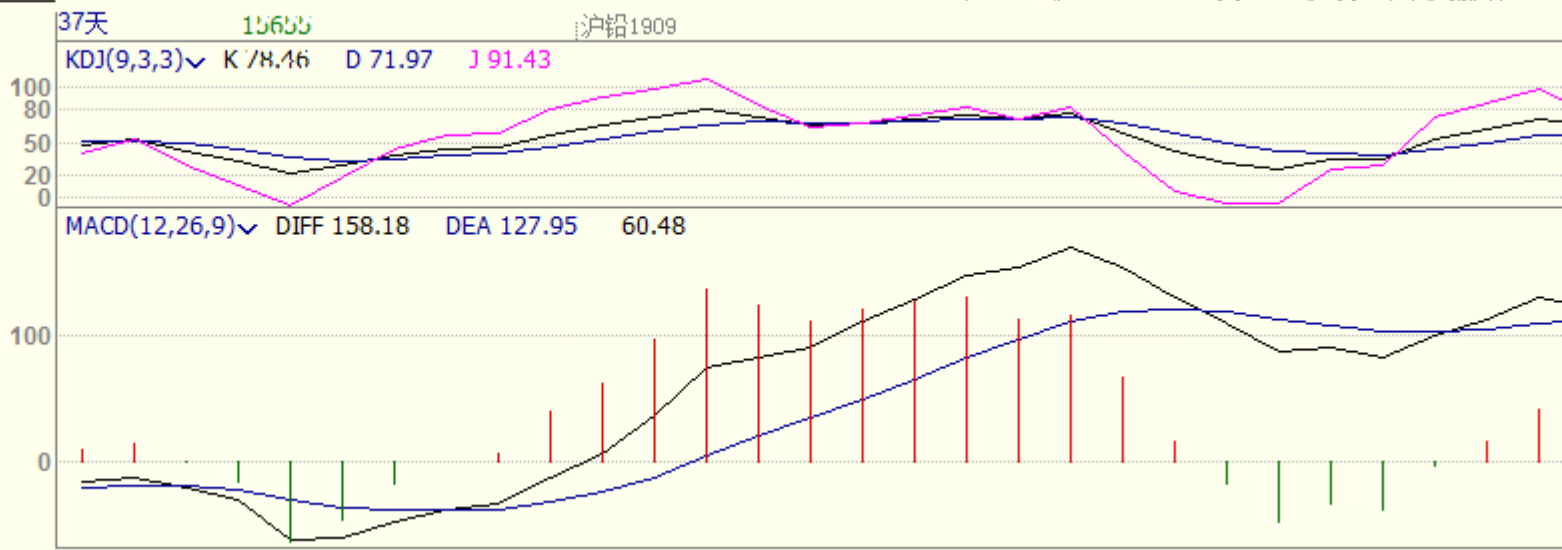


8月22日, 沪铅主力合约1910回落, 收于17045元/吨, 跌75或0.44%。
 技术上看, KDJ指标J线拐头向下, MACD红柱向上发散, 预计沪铅本周震荡运行。

沪铅1910



沪铅1909



2019/08

K

沪铜1910(SHFE cu1910) 日线

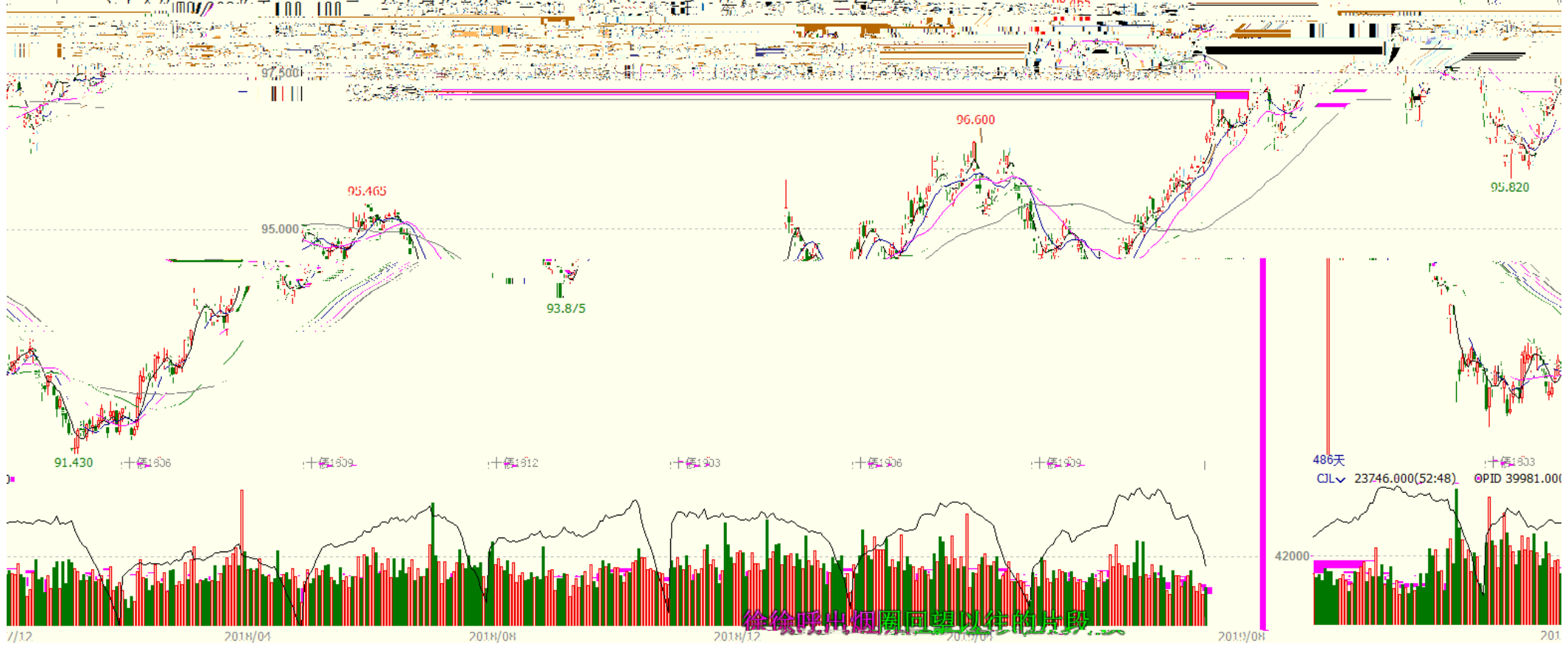
MA组合(5,10,20,60,120,250) MA5 46504.00 MA10 46553.00 MA20 46580.50 MA60 46689.67 MA120 47731.00 MA250 48383.08



K

十债主连 (CFEEX 8805) 日线 99.345 0.130 / 0.13%
MA组合(5,10,20,40,60,0) MA5 99.218 MA10 98.978 MA20 98.596 MA40 98.192 MA60 97.830

8月13日, 7月金融数据全线走弱, 债市情绪明显获提振, 国债期货高开高走, 小幅收涨。二年国债



--

"

"



020-22139858



020-22139813



020-22139817



020-22139824

5

1007-1012

510623