

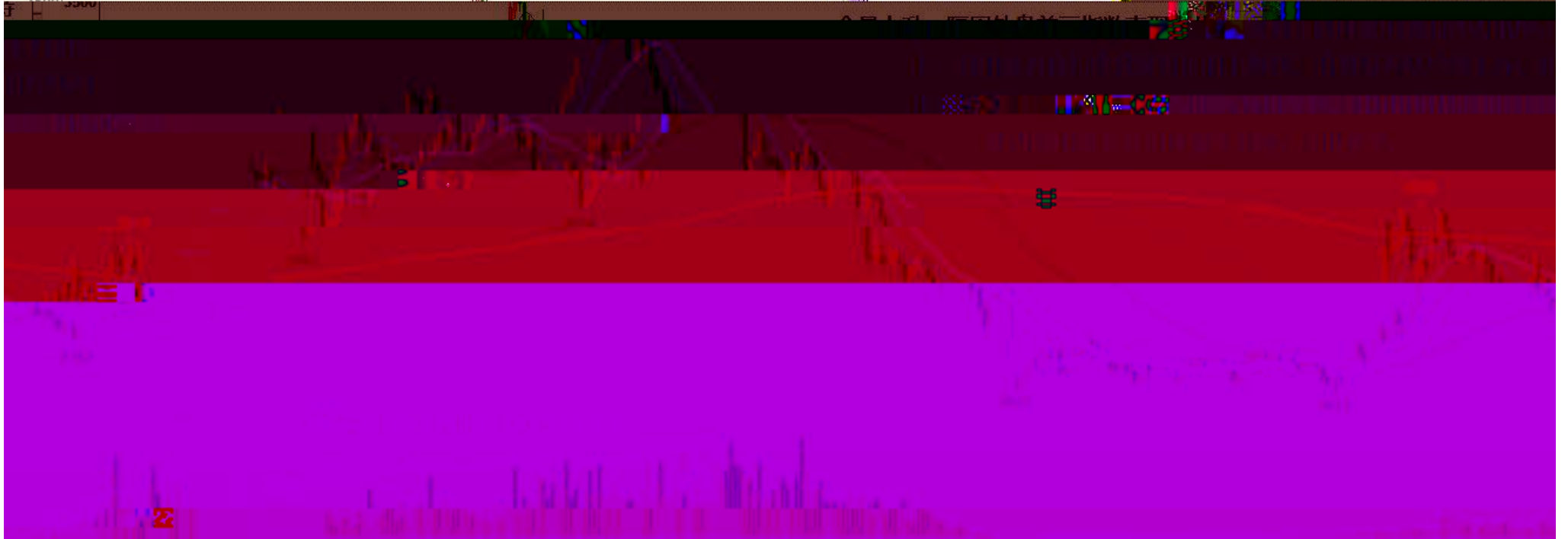
K

豆粕2001(DCE m2001) 日线

MA组合(5,10,20,60,120,250) MA5 2957.60 MA10 2944.20 MA20 2914.10 MA60 2891.50 MA120 2811.39 MA250 2915.61

3539

9月2日，豆粕主力2001合约涨107.4元/吨，涨幅4.1%，成交量放大，

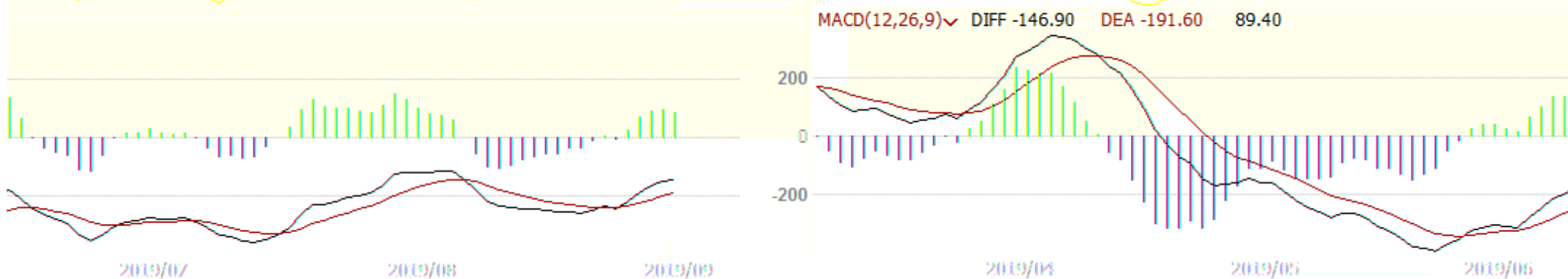
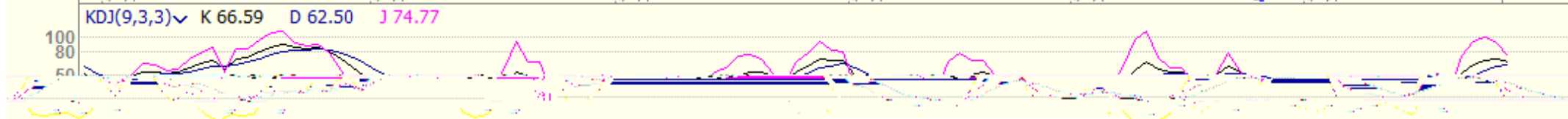


K



K

沪锌主连 (SHFE 2244) 日线

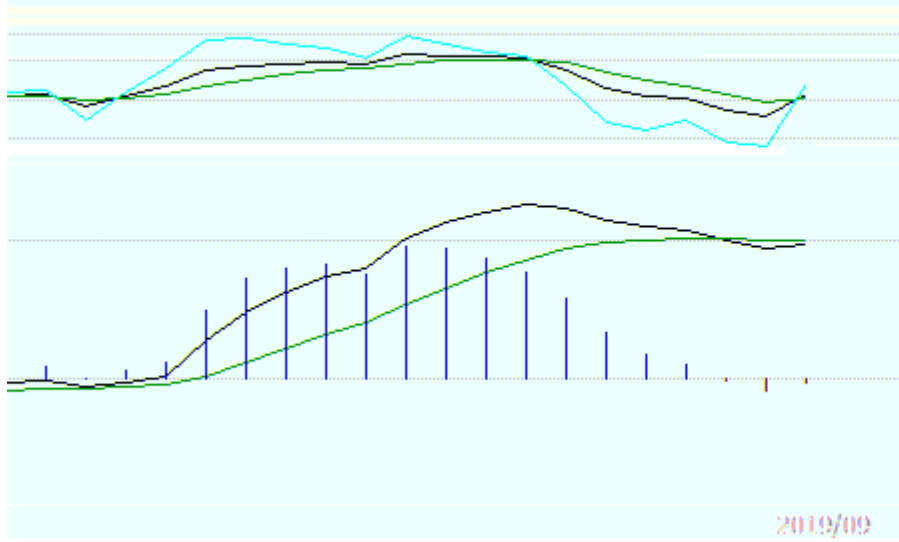


K

沪铝主连 (SHFE 2214) 日线

BOLL(26,26,2) MID 14112.12 TOP 14521.34 BOTTOM 13702.89

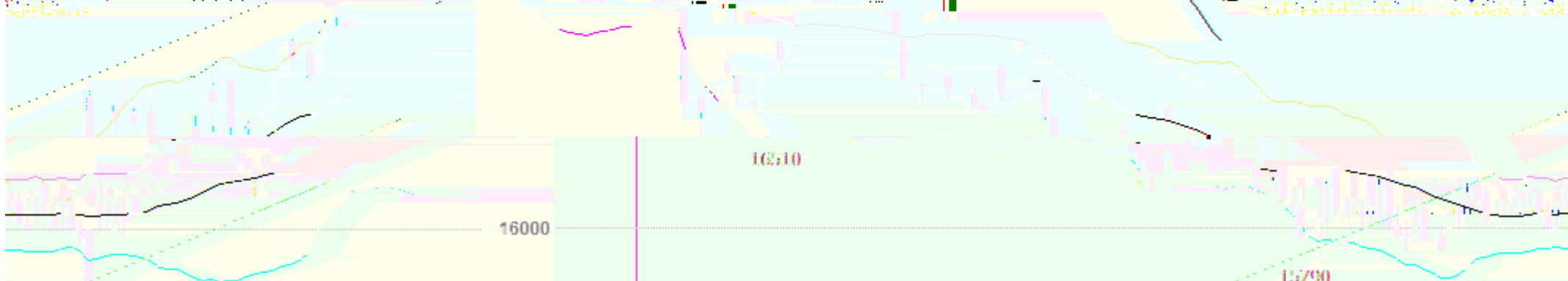
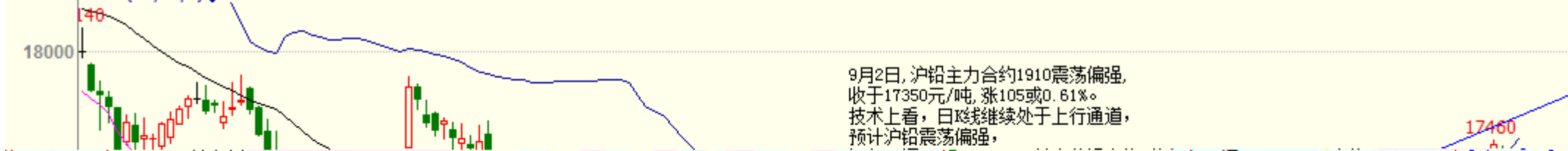
9月2日, 沪铝主力合约1910震荡偏强, 收于14355元/吨, 涨95元/吨或0.67%。技术指标并无明显信号, 但是氧化铝价格上涨, 对铝价有所提振, 预计沪铝震荡偏强, 运行区间14200-14600, 仅供参考。



K

沪铅主连 (SHFE 2895) 日线

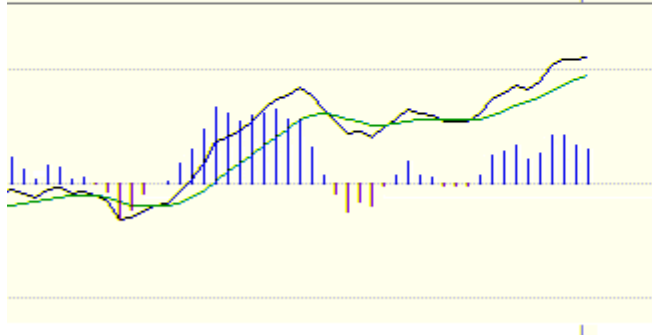
BOLL(26,26,2) MID 16838.27 TOP 17474.27 BOTTOM 16202.27



沪铅1902 沪铅1903 沪铅1904



164天 沪铅1903 沪铅1904 沪铅1905 沪铅1906 沪铅1907



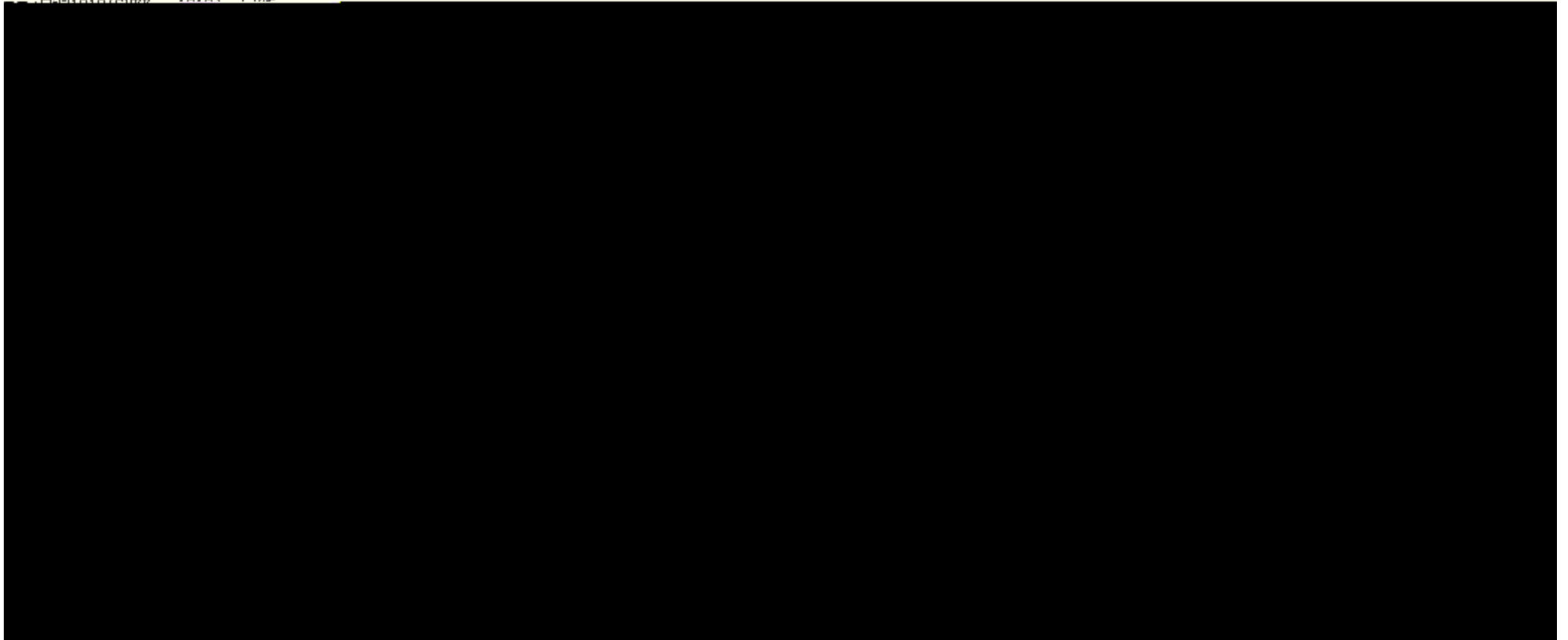
2019/07 2019/09



2019/02 2019/04 2019/05

K

油相(内部) 口線

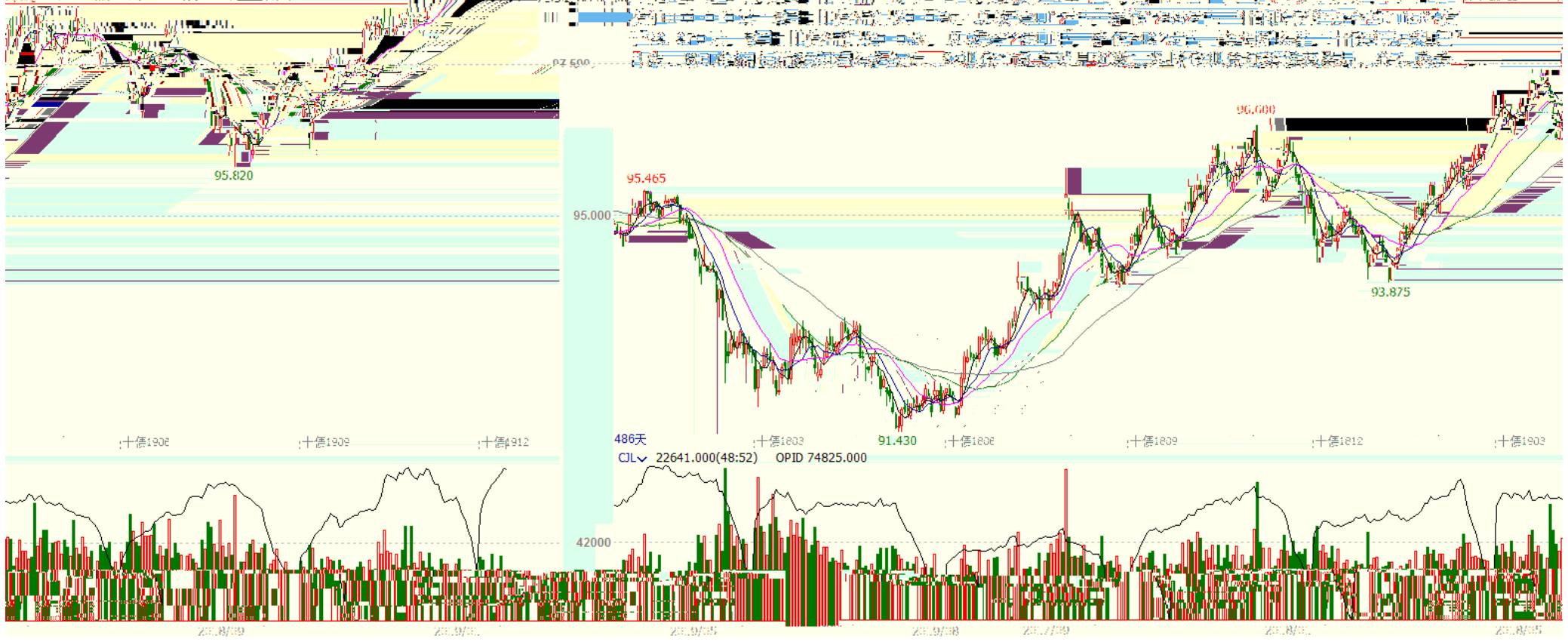


K

十债主连 (CFEEX 8805) 日线 98.870 -0.045 / -0.05%

MA组合(5,10,20,40,60,0) MA5 98.826 MA10 98.837 MA20 98.953 MA40 98.563 MA60 98.200

8月28日, 消息面空档期, 债市缺乏进一步上行动力, 国债期货小幅收跌。二年国债主力合约TS1912
临开市前, 2年期国债期货主力合约TS1912收跌0.015元, 报98.870元, 跌幅0.05%。



--

"

"



020-22139858



020-22139813



020-22139817



020-22139824

5

1007-1012

510623