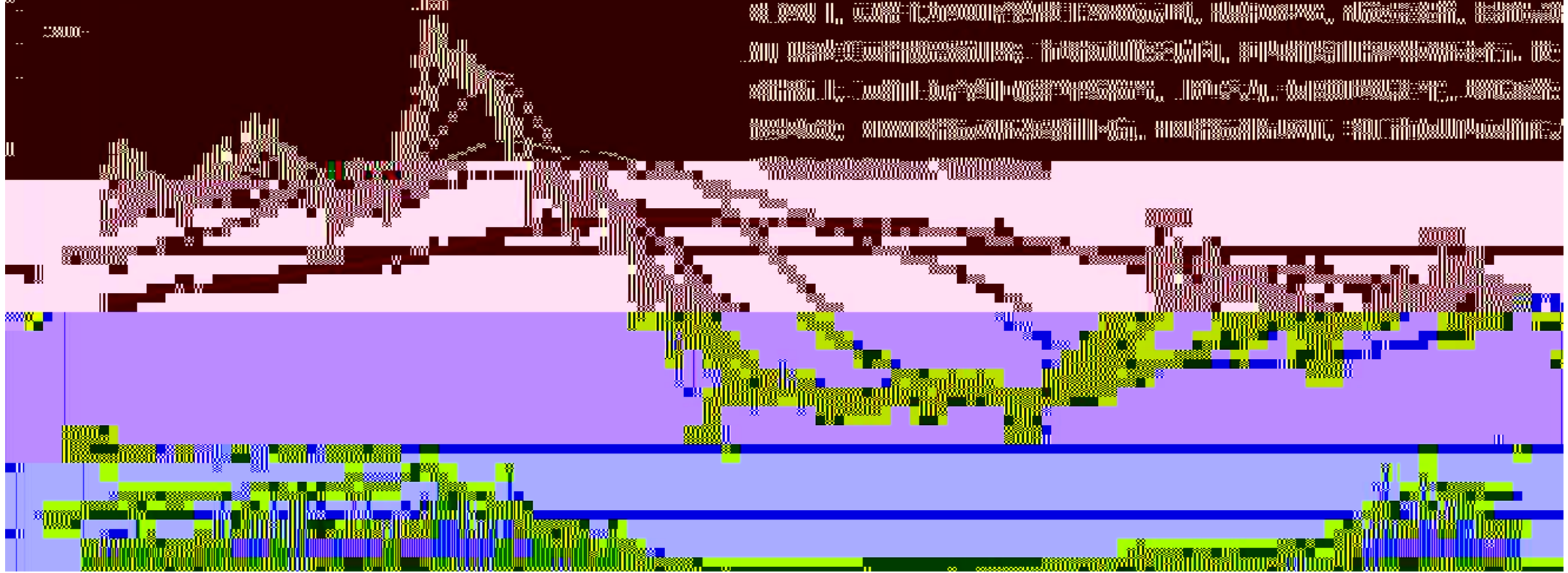


豆粕2001(DCE m2001) 日线

MA组合(5,10,20,60,120,250) MA5 2859.00 MA10 2856.40 MA20 2899.20 MA60 2876.70 MA120 2837.44



郑棉2001 (CZCE CF001) 日线

MA组合(5,10,20,40,60,0) MA5 12844.00 MA10 12924.50 MA20 12754.75 MA40 12842.38 MA60 13204.67

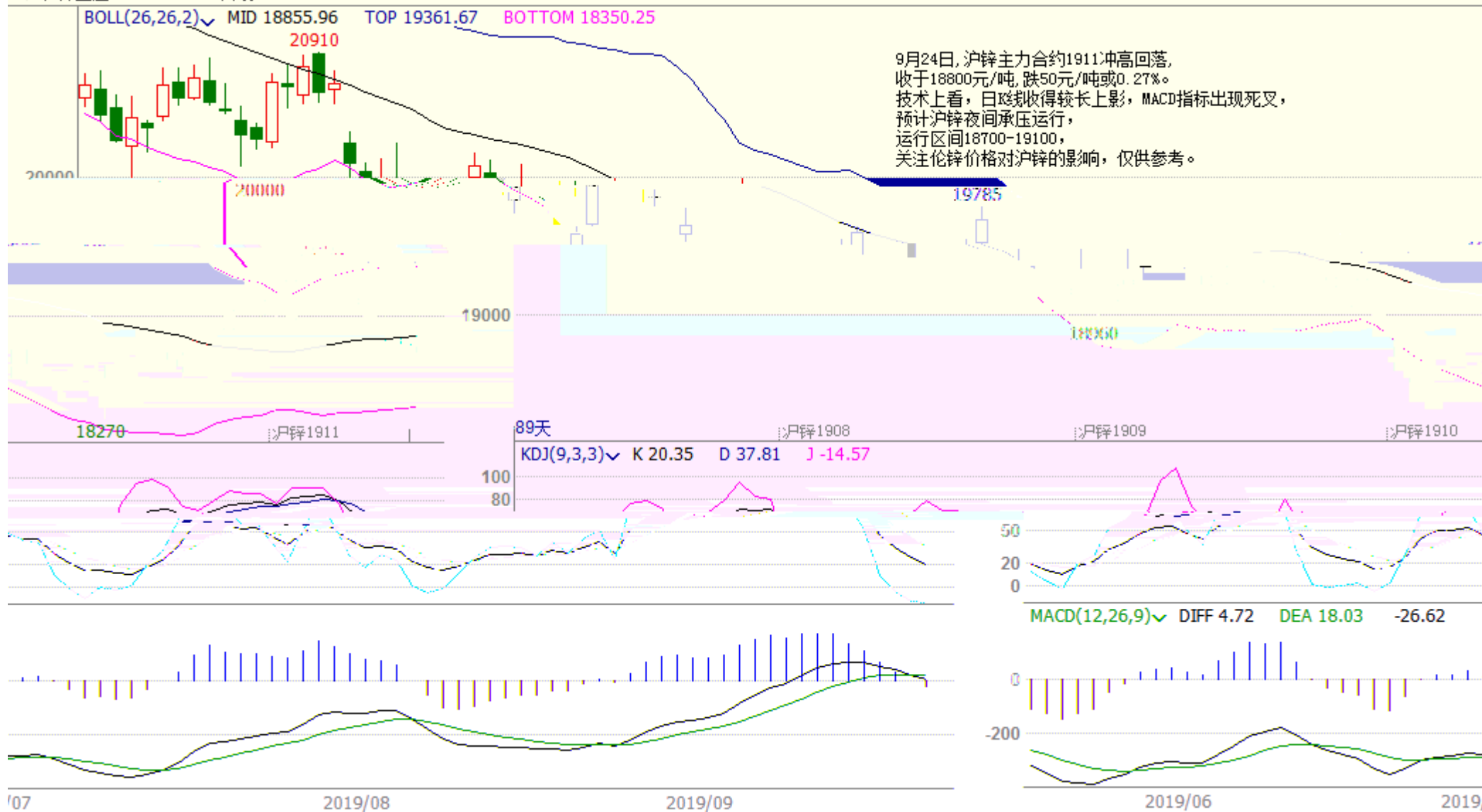


58.57 万手。KDJ 向下延伸, MACD 红柱缩

成交量 38 万手, 持仓量增加 23450 手至

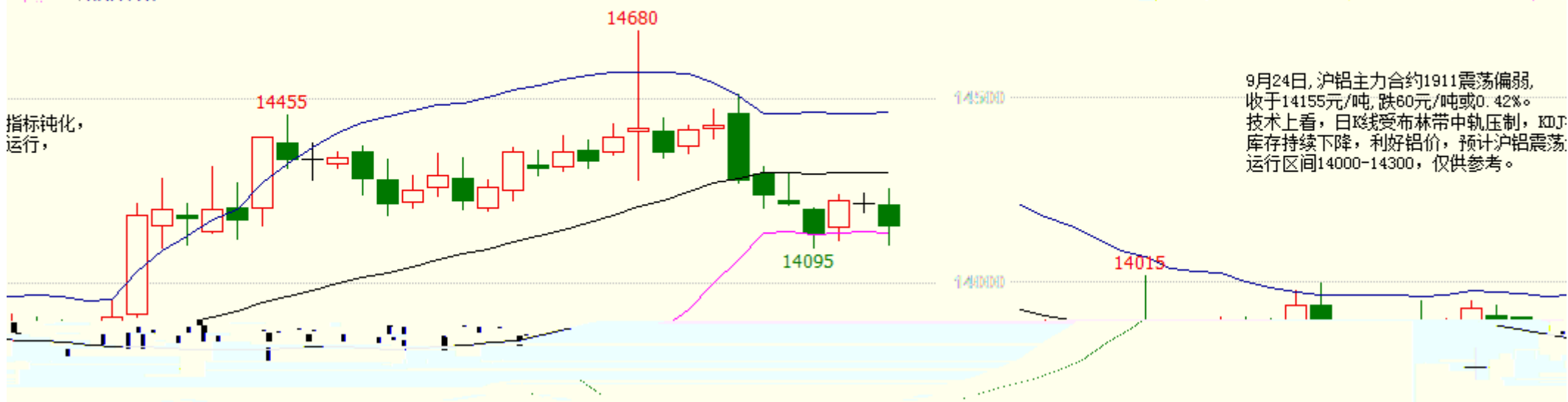
约属偏弱, 区间 12500-13000, 仅供参考。

沪锌主连(SHFE 2244) 日线



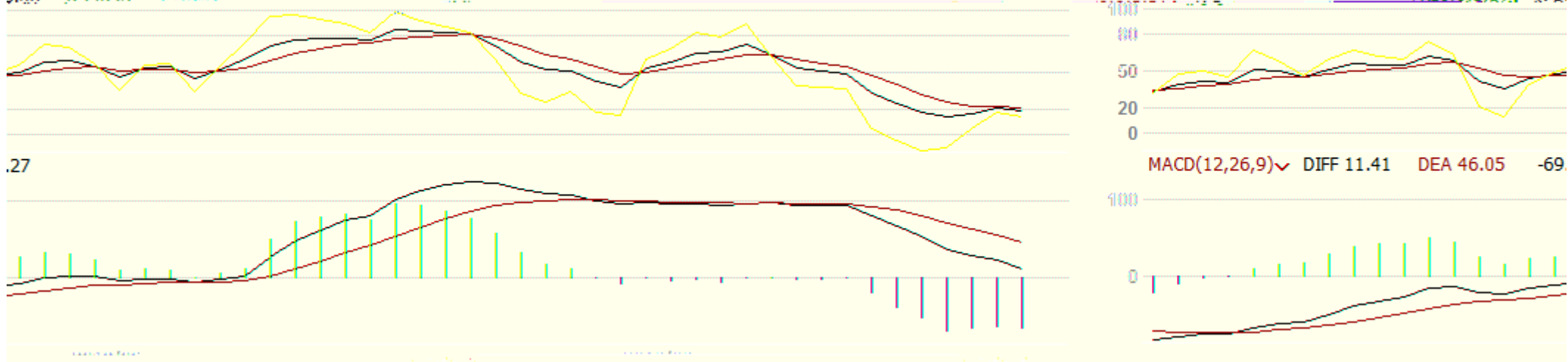
沪铝主连 (SHFE 2214) 日线

RQII (26.26) MID 14298.27 TOP 14460.72 BOTTOM 14135.81



9月24日, 沪铝主力合约1911震荡偏弱, 收于14155元/吨, 跌60元/吨或0.42%。技术上, 日线受布林带中轨压制, KDJ库存持续下降, 利好铝价, 预计沪铝震荡运行区间14000-14300, 仅供参考。

沪铝1903 3.58 D 20.93 113.289 沪铝1910 沪铝1911 58天 KDJ(9,3,3) K 11

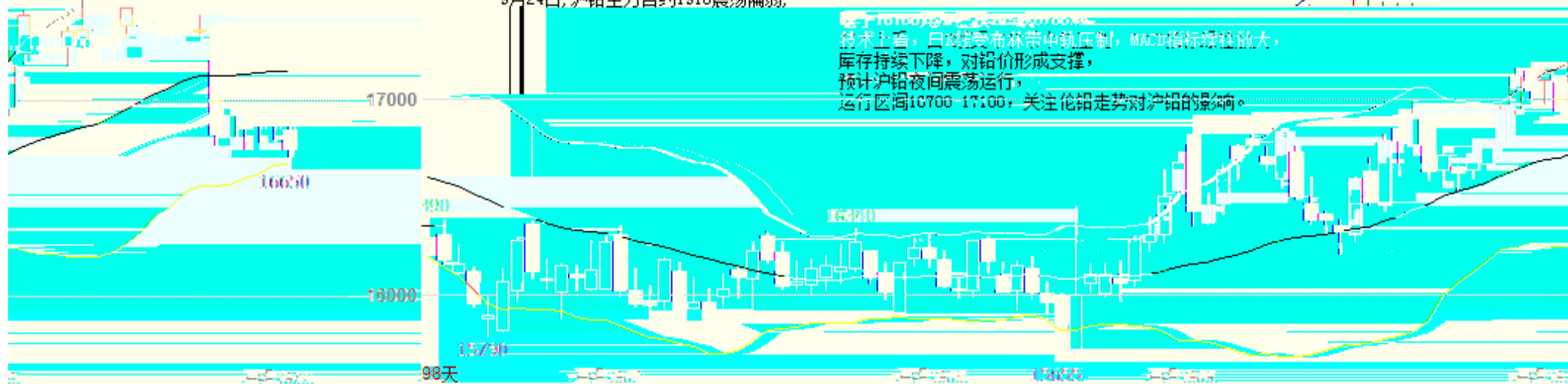


沪铅主连 (SHFE 2895) 日线

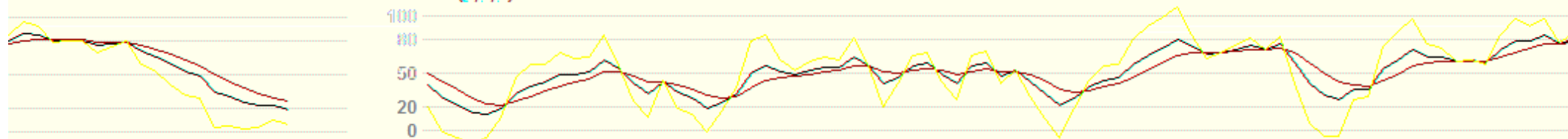
BOLL(26,26,2) MID 17152.12 TOP 17631.61 BOTTOM 16672.62

9月24日, 沪铅主力合约1910震荡偏弱,

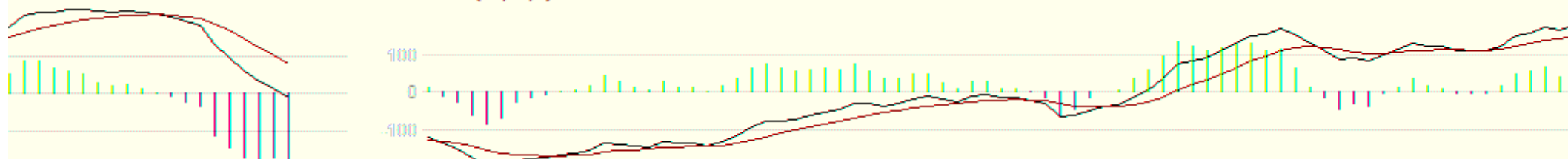
技术上看, 日线受布林带中轨压制, MACD指标绿柱放大, 库存持续下降, 对铅价形成支撑, 预计沪铅夜间震荡运行, 运行区间16700-17100, 关注伦铅走势对沪铅的影响。



KDJ(9,3,3) K:19.47 D:26.37 J:5.68



MACD(12,26,9) DIFF -12.01 DEA 78.55 -181.10



2019/09

2019/06

2019/07

2019/08

沪铜1911(SHFE cu1911) 日线





