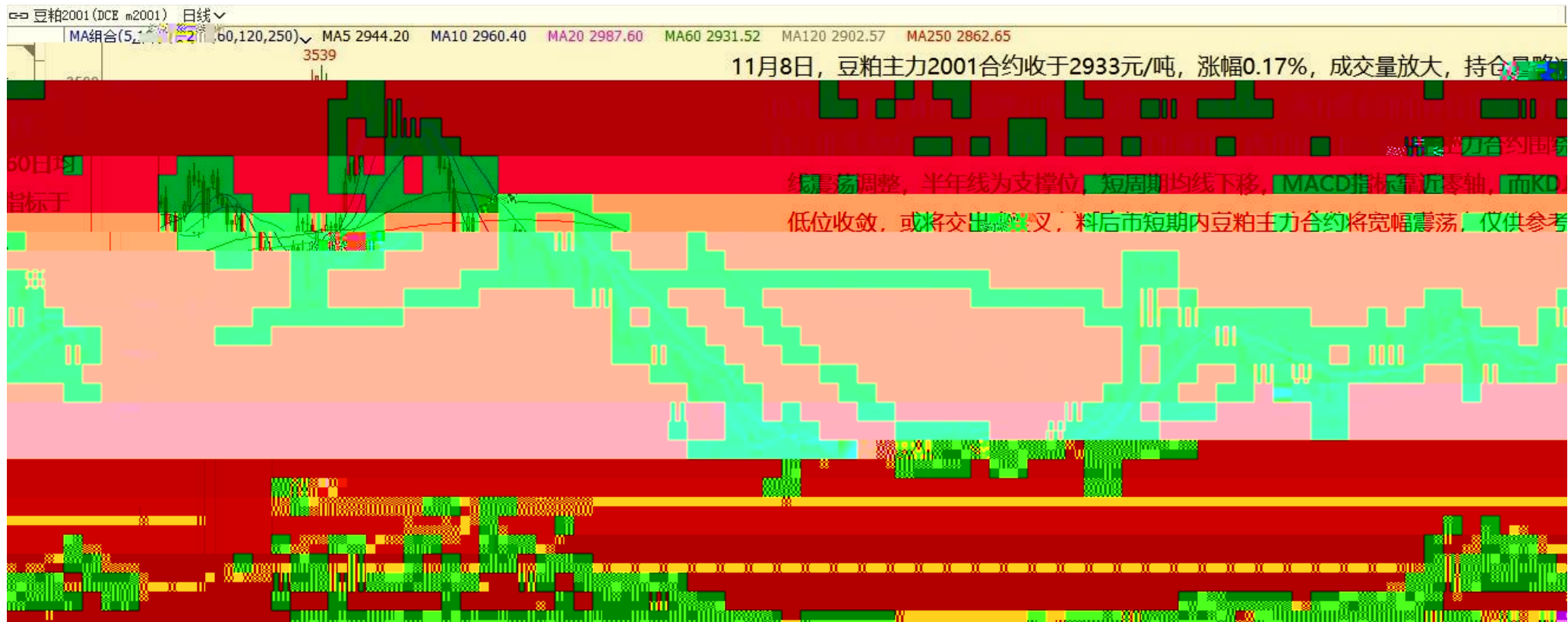


K



K



K

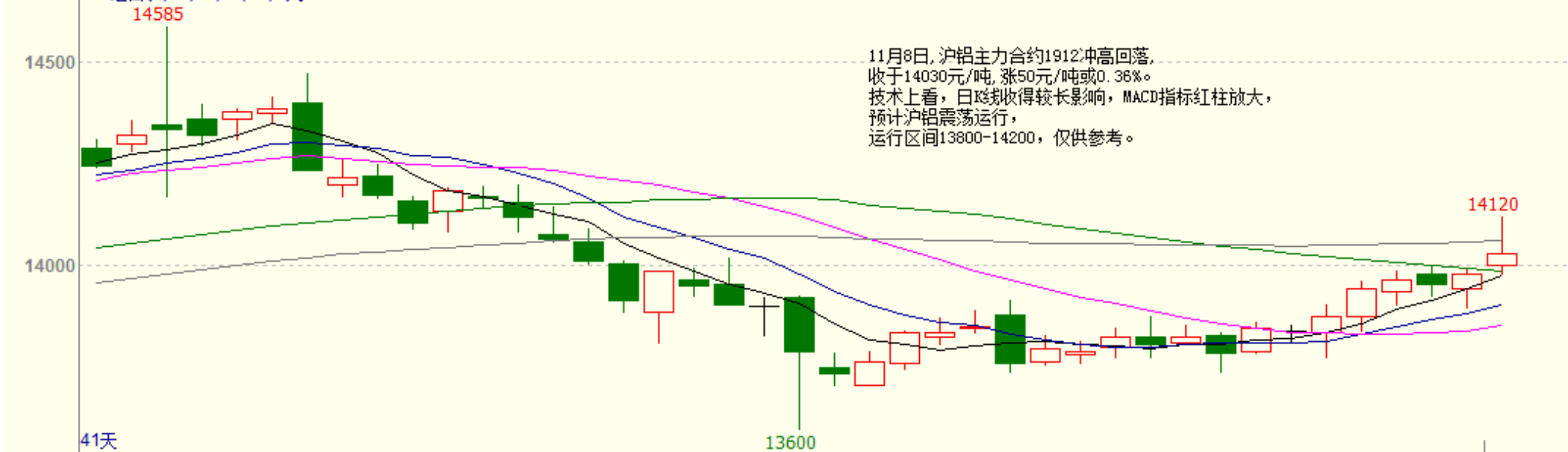
沪锌1912 (SHFE zn1912) 日线



K

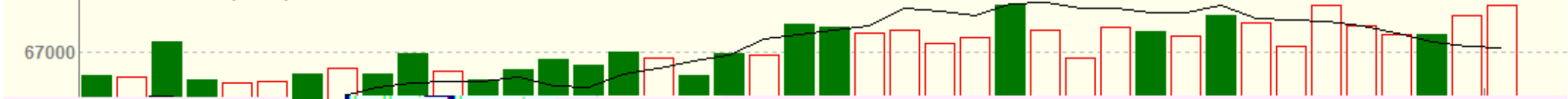
沪铝1912 (SHFE a11912) 日线

MA组合(5,10,20,40,60,0) MA5 13975.00 MA10 13904.50 MA20 13852.00 MA40 13987.50 MA60 14060.92

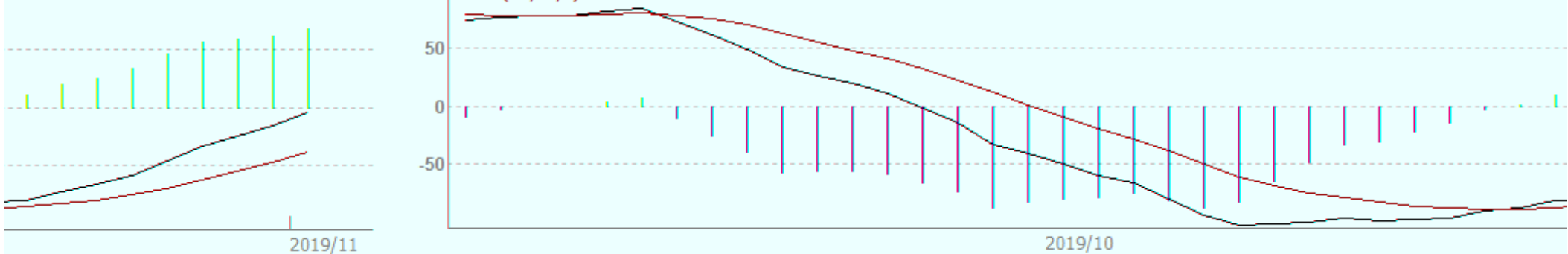


11月8日, 沪铝主力合约1912冲高回落, 收于14030元/吨, 涨50元/吨或0.36%。技术上, 日线取得较长影响, MACD指标红柱放大, 预计沪铝震荡运行, 运行区间13800-14200, 仅供参考。

CJL 130374.00(50:50) OPID 206184.00



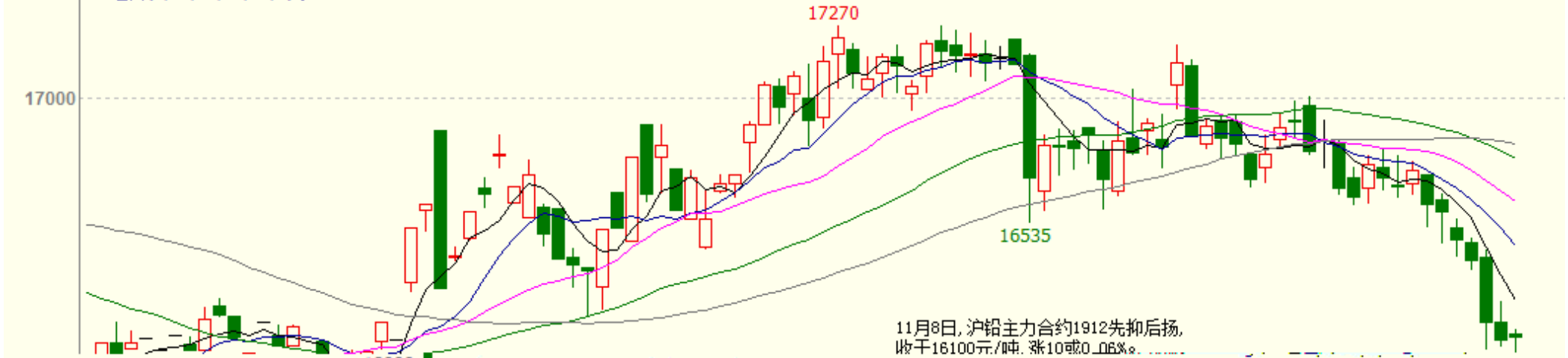
MACD(12,26,9) DIF -3.71 DEA -38.51 69.60



K

沪铅1912 (SHFE pb1912) 日线

MA组合(5,10,20,40,60,0) MA5 16241.00 MA10 16448.00 MA20 16614.00 MA40 16775.88 MA60 16828.50



绿柱放大

16000

技术上, 日线取得较长下影, MACD指标预计沪铅承压运行, 关注16000整数关口支撑。

实际

98天

16750

KDJ(9,3,3) K 11.54 D 14.71 J 5.19

MACD(12,26,9) DIFF -174.67 DEA -108.76 -131.81

2019/11

2019/07

2019/08

2019/09

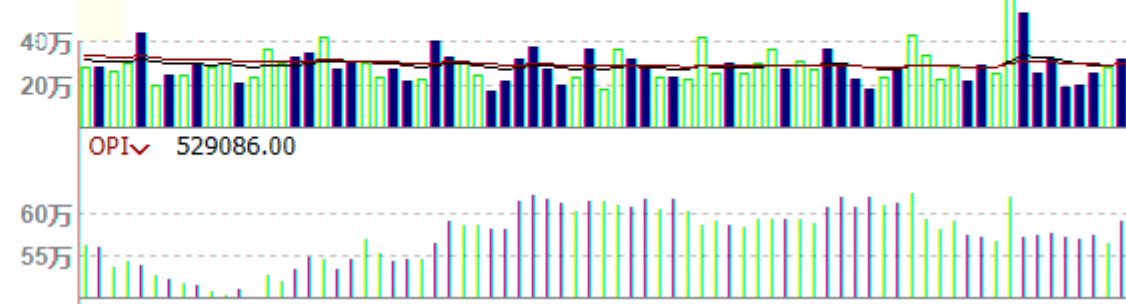
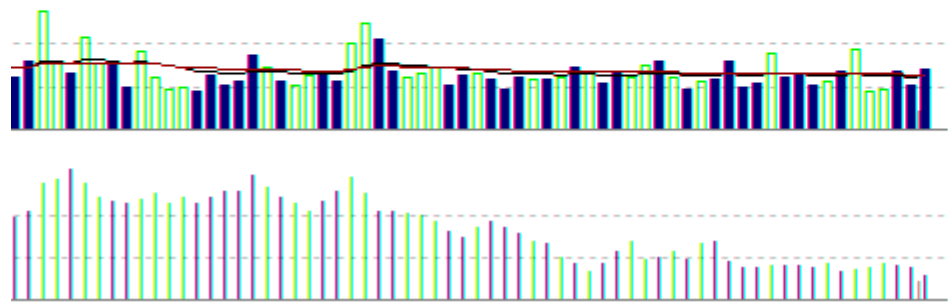
2019/10

K

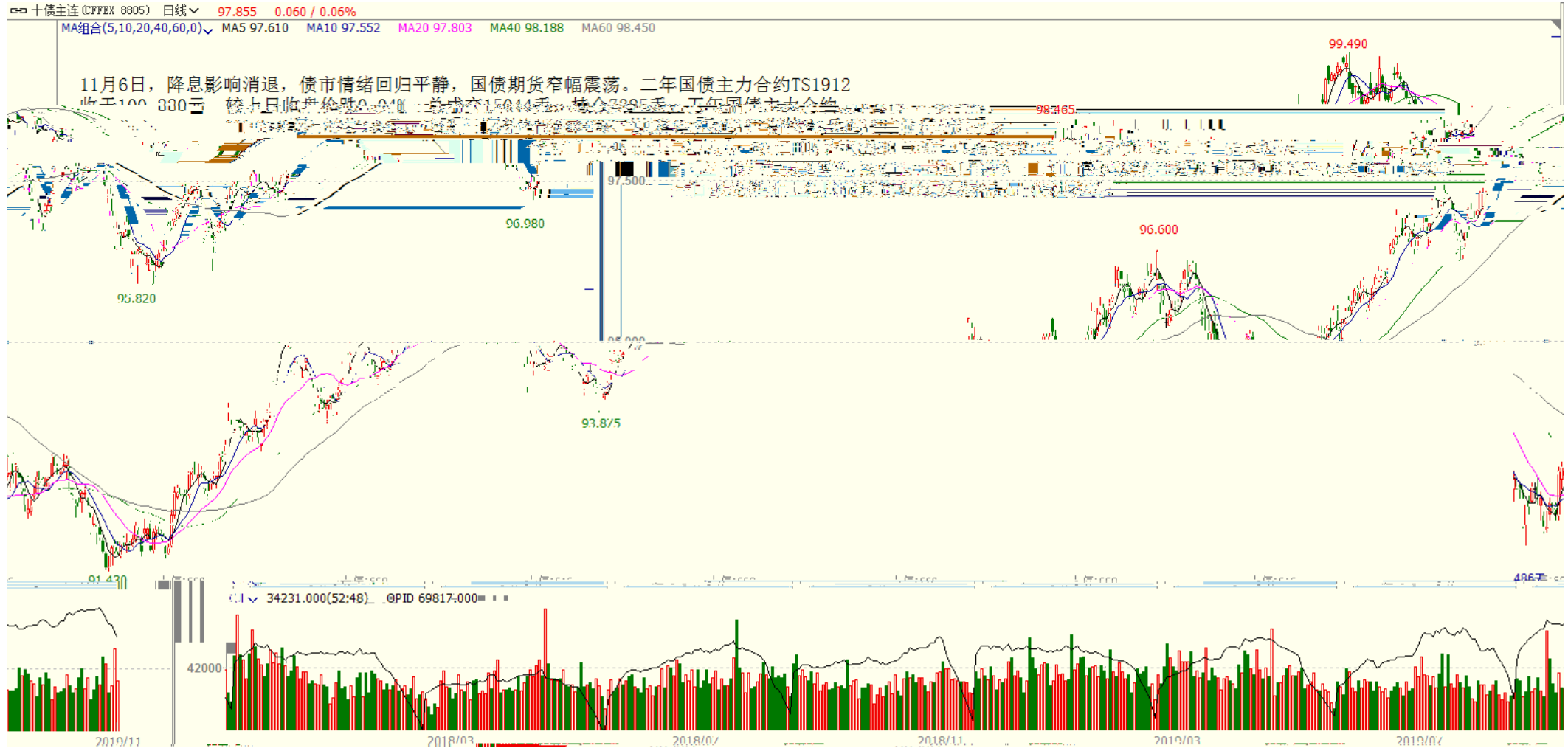
沪铜指数(SHFE 2100) 日线



11-08, 今日铜价收获带长上影线的日K, 显示上方抛压较重, 成交量及持仓量维持低位。目前看价格受多条短中期均线支撑, 但仍难以突破震荡区间上沿。MACD指标的DIFF及DEA走平粘结, 多空分歧较大, 预计短期价格维持震荡调整。仅参考。



K



—

“

”