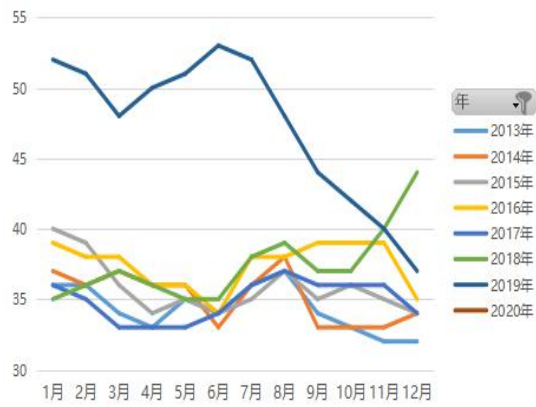


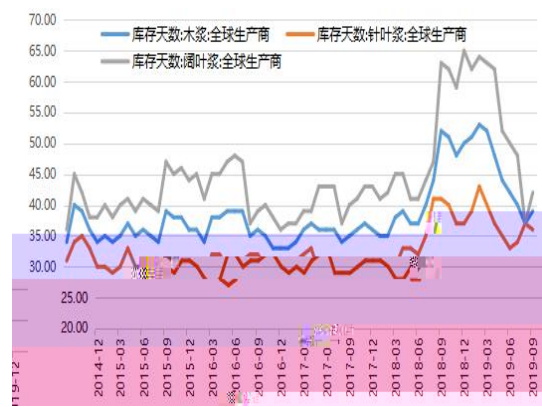


2

1



2



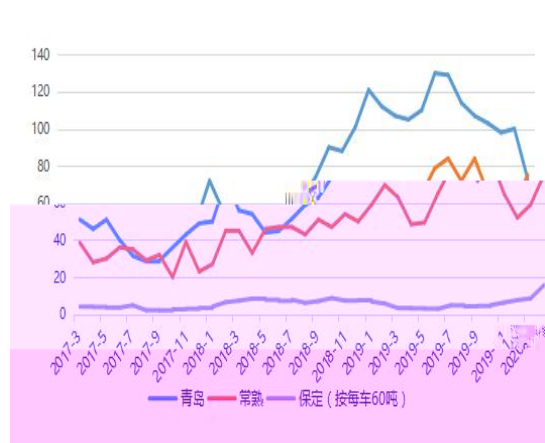
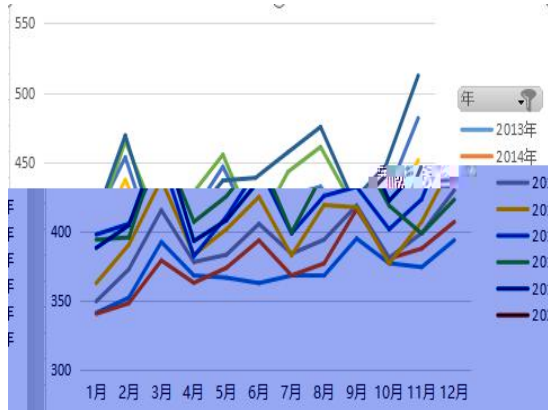
Wnd,

1

39	13	36	
5	42	21	
2018	2020 1	398.9	
22.14%	2020 1	22.64	0.11%

3

4

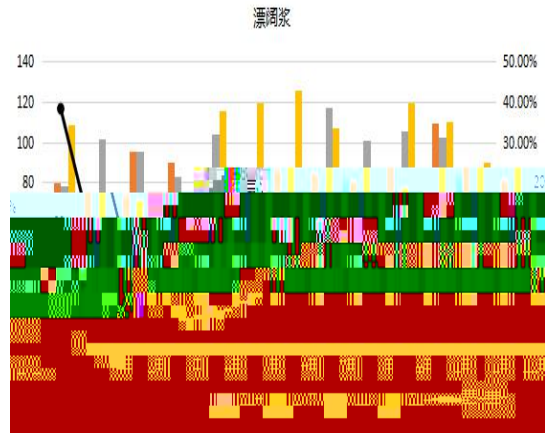
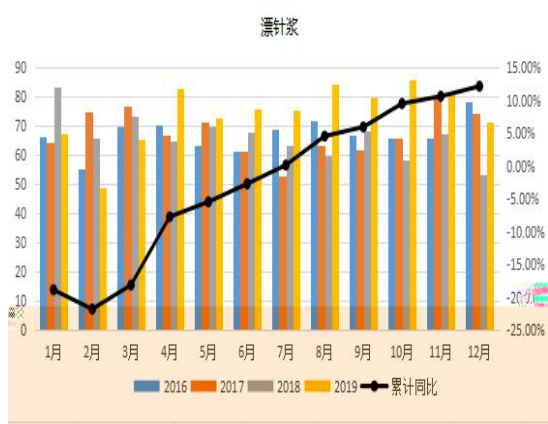


W nd,

229	2	28%	10%
	12	218	2719.6
9.7%		12	71.15
13.25%		891.1	33.49%
90.07		17.2%	12
		18.58	1178.1
	4.41%		

5

6

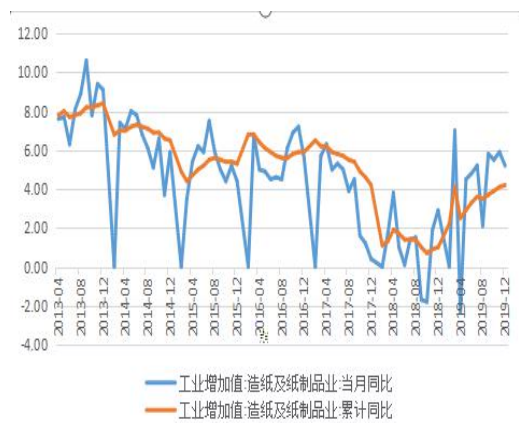
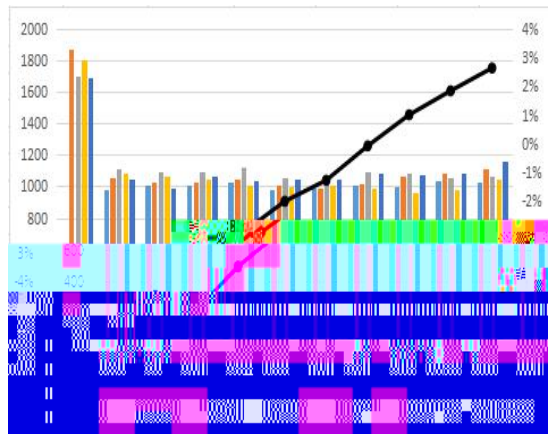


2

3

7

8



Wnd

2019

681.9

-9.1%

1.6

10.4%

4400

4500- 4700

