

020-22139858

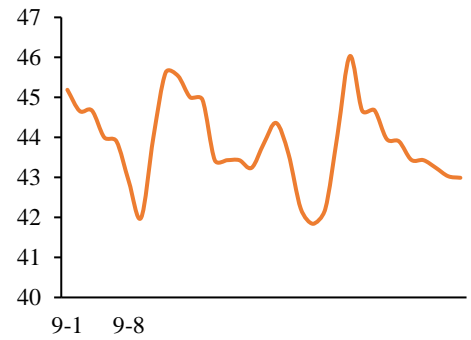
7 16 1921.1
(CEA) 8.67 9 30
10 26
63.06 10 26
12 31
CCER CCER
CCER
CCER
2012
3

CCER CCER CCER CCER
CCER CCER

F03086605
Z0016791
li.dai@gzf2010.com.cn

F03086901
Z0016570
hu.an@gzf2010.com.cn

2017
CCER
CCER
3



-20210831

" "

-20210730

-20210716

□

□	
□	

□

CCER
CCER

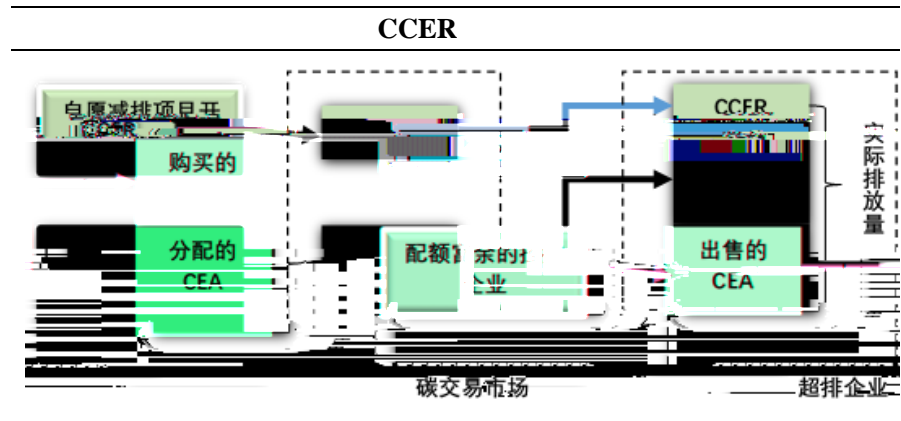
□ □ □

CCER			
	1.	2.	3.
	4.	5.	6.

" "

" "

□ □



□ □

CCER 2009
2012 6

10

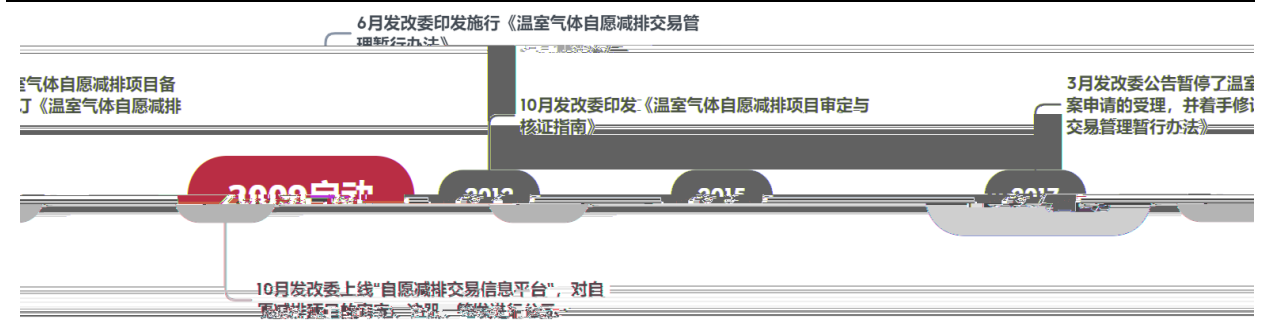
2015 10

2017 3

CCER

CCER

5 CCER



CCER

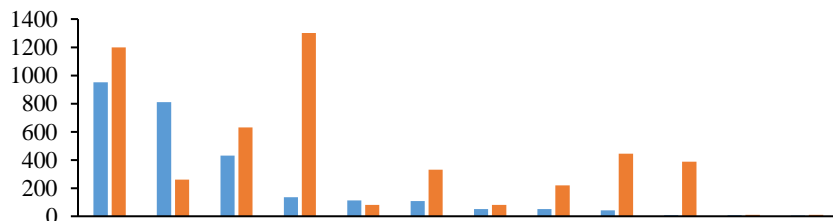
2012-2017

2852

□

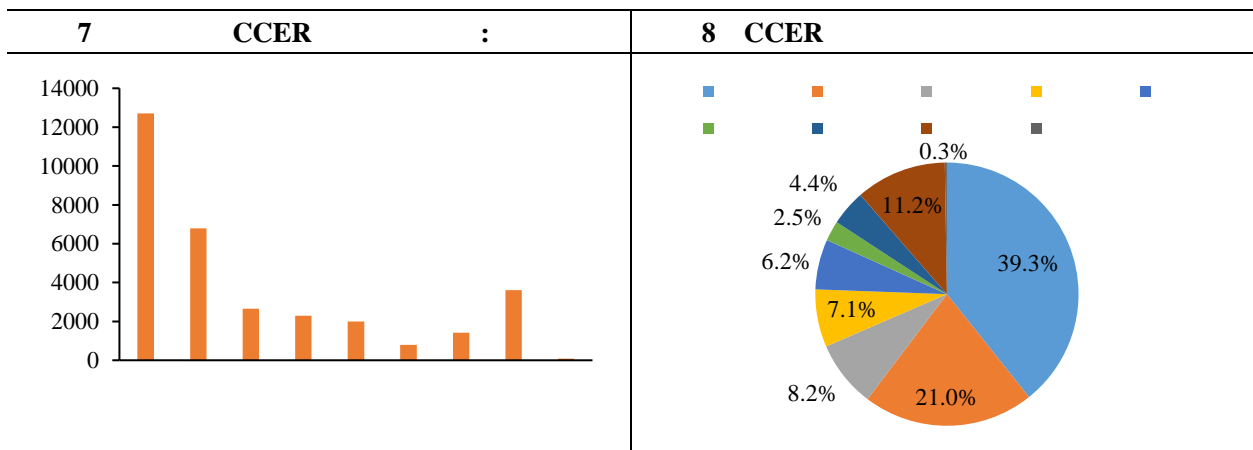
CCER

6 CCER



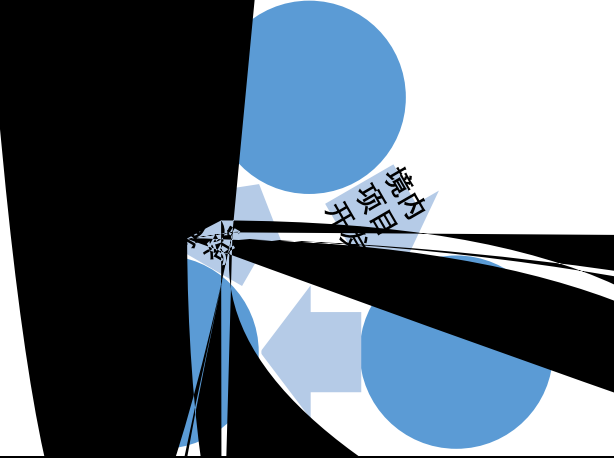
CCER	2021 9	CCER
3.2	35	CCER
1.3	39.3%	6799
CCER	3610	11.2%
CCER	1000-3000	4%-9%
799	2.5%	84
		0.3%

□



2004 7
2005

10 12

(CDM)	CDM
	

2005	2012	CDM	2013
CDM			CER
			□
			□
□			
	□	CCER	CDM
		CDM	CCER CDM
		CDM	CCER
CCER			
		CDM	
		CDM	

CCER CDM CDM CDM
CCER

CCER CDM

|

(CDM)

|

(CCER)

2005 -2013

201

□

		□	□ □
	□	□	□ □ □
□		□ □	
□ □ □		□ □	□ □
□ □ □		□ □ □	
□ □ □	□	□ □ □	
□ □ □		□	
			□
	□	□	□ □
			□
□ □	□		□
□	□	□	□
□			
	□		