

020-22836112

2022 1-2 1-2 20-21
20-21
1-2 " " "
" " "

2022

5.23% 2035 GDP
GDP 5.23%

GDP

GDP 2022 5.5%

5.23%

1 2021

24.67% 30.16% 24.19% 4.8% 1.37% 14.81% 2
5.5%

1:1

1%

1.5% 3

5.23% GDP 21-22



20211230 - - - 12
-20211230
20211230 - - -
15%~20%-20211230
20220120 - - -
3 -20220120
20220323 - - & -
-20220323

1 5.5% 5.23%

-2% 1%~3% 5.23%
1%~3%

5.5%

9% 10.85%

-2% 1%~3% 5.23%

6.85%~10.85% -2%~2%

2022 2%~3% 2

3 Q2 3

8.96% 2020 Q2

2022	1-2	
		
		
		3
	GDP	4
		5.23%	5
		5
2022		6
	Q2	7
		
		
		

30

:

:

.....

.....

.....

.....

.....

.....

...

..

.....

.....

.....

2022 1-2

1-2 7.50%

12.20% 20.90%

8.10% 3.70%

6.70% 31

5.40% 5.50% 20-21

20-21 2022 1-2

" " " "

"

	2022		20-21

Mysteel

1-2

2020

2021

0.34%

4

0.37%-0.42%

1-2

-12.20%

-9.80%

1.80%

3.70%

-9.60%

19.30%

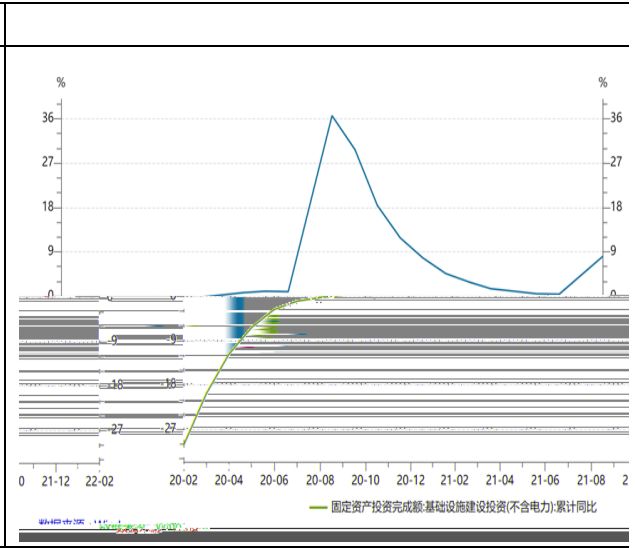
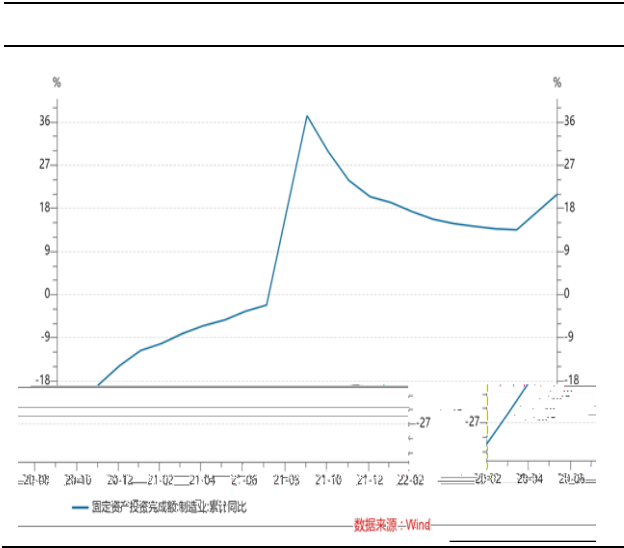
-42.30%

-17.73%

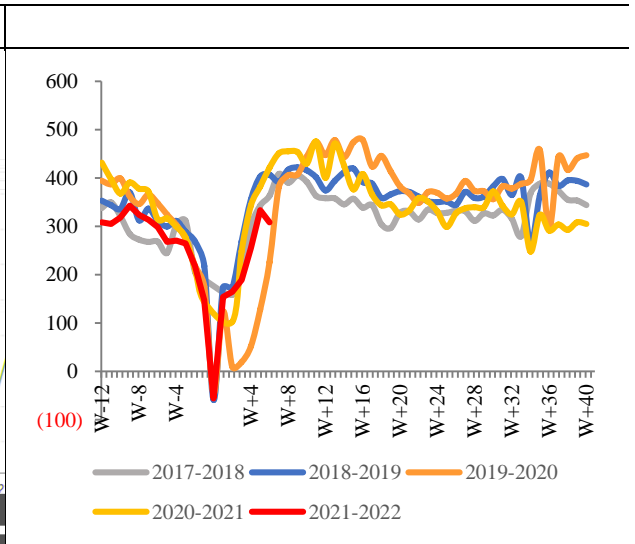
-8.9%

3%

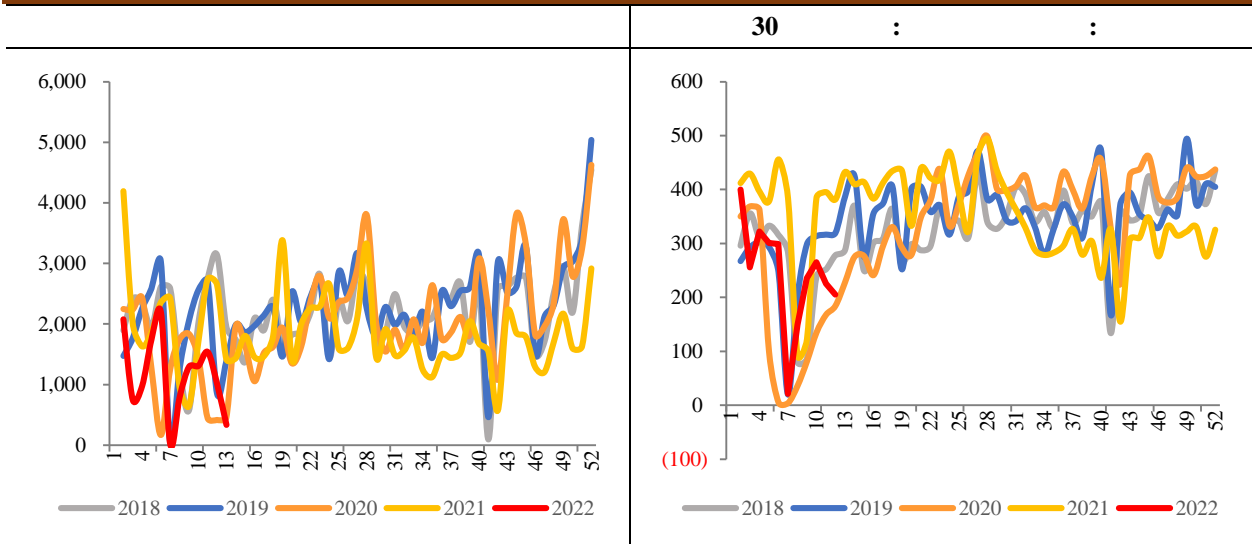
-29%



Wind



Mysteel



Wind

5.5%

2011 2018
2017 2013
2018

" "

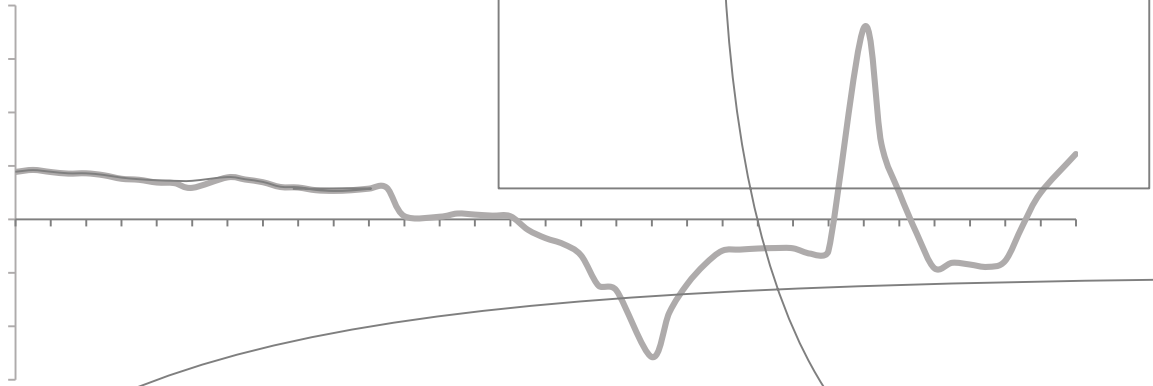
2017
2017

2021

2021

24.67% 30.16% 24.19%

4.8% 1.37% 14.81%



Wind

GDP

			2016	2017	2020			
					GDP	6.85%	6.95%	
2.20%	2018	2019	8.10%	7.20%	2.90%	5.90%	5.40%	GDP
6.75%		6.00%						
		2018	2019				2021	2020
		GDP						
		"	"	"	"			
						GDP	3	2
			2021					

P2P

Wind

5.23%

GDP

2021

5.23%

5.68%

2022

2021	4.9%	2022
"	"	
	5.5%	21-22
35%		65%
5.68%~9%	5.5%	
	4.95%~10.85%	-2%~2%
2022	1%~3%	

-2%

5.68%

2022

-2%

5.23%

6.85%~10.85%

2%~3%

-2%~2%

“ ”

