

.J0- Ò €

UC] PCz r Æ F3084112

-\$ <

|                                 |       |        |
|---------------------------------|-------|--------|
| 6 = b ž æ Þ1Œ+)                 | ..... | 1..... |
| ´ 6 µ P PTA01 = • ÂG½ 01 FX „ › | ..... | 1..    |
| ´ Â µ PK 0°K / è1Œ+ )FX „ ›     | ..... | 1..    |

6 = b ž æ Þ10E+›

´ 6 µ P PTA01 = • ÂG½ 01 FX „ ›

n ùFqEÇ Æ

PTA Ñ M6 Ô , 8 p Ú IFqEÇLü c ^ Ñ Ê5\_H M6"x1% 6 CU9- & Ý  
K6Eç³ , 8 p ú B Q 0™Nº U >LÁ-v f U 'Eœ,º , H e CU ,  
6•G¥CU9- f U,º „&ĩ 79%LzF 5l ~ }8) 83.3%,ÑM6 r v)â" o  
º , PTA ñ É Ý ] > ^"ĩ - ] {C! p \ Þ A , TA C! õ ... p >  
• ÂG½ 6 )½ E { &ĩ } | : „ f , Ñ Ê1% f U ö \$Ax H5 5#:s  
f F U É Ž ] { ñ L Ö4þ1% 6 )â" ¸Eç , • ÂG½.# UC! õ ... p >

' SD% Æ

9 > 6 A ~ l - , TA l - - p 5696 , EG l - - p 4351 > 0Aä TA  
› p pL\* 5600-5650-\$ = pL\* 6000-6050Q~ • pL\* 5200-52500Aä EG  
› p pL\* 4300-4350-\$ = pL\* 4500~4550 Ç!~ • pL\* 4100-4250 >

´ Â µ PK 0°K / è10E+›FX „ ›

n ùFqEÇ Æ

D UK -,º Ú l &ĩ < ... G Á?øM~ ,LÁ-v P 3 \_)½,º @ } , Ž\*95 #,  
L <F 6!› t5l , D UK - AD 0°L\* E¹ ] > . /6B@6\_K - Á?ø  
§ E¹ E , J+k@ K Ñ Ê ! Þ Ž ^LÆ , 6 ïM~! ] #h73\$Æ - r5\* 7  
Q f LF 6!› Z Á ì&ò ÝH , -!W69< † f Ç • ›"j ... â < /+k@ K  
Ý73 Á Ý >

' SD% Æ

9 > 6 l - , 4AL2211-CU2211- \$ 12410 , 0Aä › p - f p 10000-  
11000, !~ , þ f p 1400015000 , !~ • f p 7000~8000›

> l - -Ax1Í , >4Ü - y ^ , >4Ü -  
y ^ , O" •10E+› • Æ • , vM6 A÷H p Æ y >  
? = % 'CzH ~1Í , § % ' •10E+› >

" •10E+›B ù

|                |          |
|----------------|----------|
| 10E+›2± Á      | D ÷0 / è |
| >4Ü ĩ G        | P 0°     |
| > A ~ l - - \$ |          |
| › p - p        |          |
| !~ • - p       |          |
| -\$ = - p      |          |

10E+› q, þ Á

|                  |  |
|------------------|--|
| }Aô qH NÓ ´ y µ  |  |
| •10E+› A÷H ´ y µ |  |
| O Lÿ ü =H ´ y µ  |  |
| 6 ] Á • ´ y µ    |  |
| -\$ =, þ _ ´ y µ |  |
| , þ Á"           |  |

69<‡ f ?8"H " - r# p,°O Lÿ ] , 0AäE± ' , % F? 40% Cz  
H +^ ÄB ï ~ ' , 60%CzH ' pO Lÿ ü =H >}Aô 100= ĘCzCzH , % +^  
40 =CzH +^ Ä • \_ , 60 =+^ ÄO Lÿ ü = >>4Ü 7 ? f U CC»Ey 10>31 >

**Â = )æ ?10E+›D DÿÆx = P IM 0° IH 10E+›**

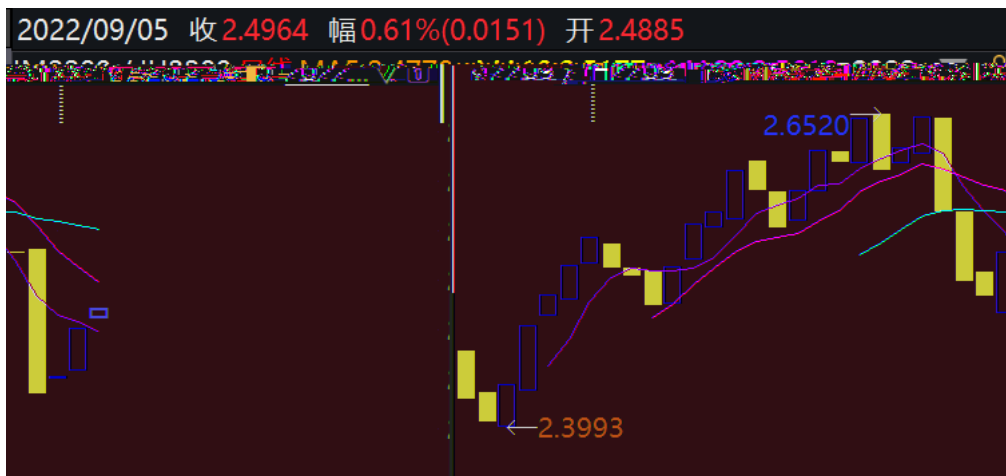
n ùFqEÇ Æ

i > A "#- L ™ Ü73\$Æ - r Ä @#pN° U }\$ \_ 5Ä6Š p3]5\_Ei+, C\$;  
! , Á I 8 pO Lÿ ... ³ , µ Í cA÷ 1000 p >ž,° c E- FKµO r 0)æ  
E¹ ] { Ü B9 , f U, p \_ F > G "AÚ p , Ä w ] " 6 f , u10E0i c"xF  
e.# U 8 p,° q ùPp >O LÿCz Ý !FUAX - Q4FP6ö C.ª Đ ] , jF 5Ä6Š p  
9 >Aä ¥ PAä , LÄ-v5Ä 3 8 >5 #, ; ¢ áMh Ä" 3 » d>,0% ·H t0i"}  
)½ - , » æ,° Ö ¥N° U c Ø ~ F D , CUM~ § <FF!> g >8 pO rLi  
!ë ] } >— D , ^ æ Ý PCÁ ò #w p ] e Ç A , Q ¥"J FKµC'F%o ? < L |  
e q4ö > {10E+› %5 5# 7 ? >

' SD% Æ

8 > 1 010E+› , ! M:IH >4ÜGf" 1:2 , › p pL\* 2.44~2.54, © }  
› p&i f 2.49Ç-\$ = pL\* 2.84~2.94Ç!~ • pL\* 2.24~2.34 >-\$ fB 10E+›E¹  
© } › p&i f, p \_ ? v ÿ ] , 0Aä5 5# 7 ? >

4>ž3 Æ RM22090°IH2209>4ÜC! ò



! ¢ › \$Æ ÆWind µ UC].J0- c ù

? = b ž ©# 10E+>

• P ŷ8ç -.#4Ú - \$

ŷ8ç Â.#4Ú B p4ð4ý Õ Ĩ , A\$#¼Co1%,¼ p4ð4ý C>û Ý ÷ , % È-. /è> Ñ Ê1% ĩM̄ , ŷ8ç ' p Ò Ý ÷ , Að e c 3F e 3L{ ,0 CH L6; B\* Ñ ÊH G3 ¾ ?L† > | 3 » L4Ú,º Ý73 6-\* ^ Ÿ V > !š f ŷ8ç.#4Ú - \$ 6Q }8) 14000 @ ,LÅ D p æ+¼ ý/ L\$NĪ , Z6; - \$ :s8) 6 ,, 6733>F U - \$ ( ?1‡ ĘF/B— > bª Ü æ+¼ ŷ Ò C ŷ Å • 9 ŷ -5\* 7 ,, f , 2023ª ÜNºAx0 CM̄0% <5\_ > Ò L4Ú æ Ô Ý73 Ę Ý , Z6; - \$ ? QH æ ŷ }8) = y @ >

U 8"H "69<‡ • P 1-5!™ •

9 > c A " L Ž ^LĪ!ë ] ÑM6KOGf , PAä f Ý+ ,, É Ž A,ºKµ }> É+ f Ý u10ENº U+ 0 0 Ö.7 > • \_ %69<‡ 1-5!™ • > ^H ] PAäOĪ U , Ö+k&¿ Å •FF\$F Ÿ ] ,JØ † ÝH Ž ^>á b ÝNº U > Õ Ĩ1%M̄ j&i9¥1x Ý = ¿ ž+U Ý1• 3V , Õ Ĩ)æC] ^ 9 > - ? 6 Ð e Ç > A\$ñ : Ä ,, É Ž(i 7 , 3 ¼Kµ }> ÉM6"xE' p 0- >JØ -- ? 6 Ð { Ü o,º %73 > C Ý +á û 28\*PŞ b G A , | ,, fr = ,, É Ž = p 0 \$ , # UM=9— G A , AD E' p C#w+{ > 6 ÝNº U:s f Ö> ÉM6"x - r ĩ l ~ FE' ] o >

1• »TW= 0 \$ V,º è?øNº UA÷ `

%o f 0 \$ Q 0 æQ V 8 p è?øNº U , q?·\$E Ä Æ 1 µ™8, ]Q &i • D)æC] - rCÁ Ä™8, ] :s Ç2 µF U 3 »+á û P û è A,ºLĪ!ë ] C]FE e ¼ D UM6"x > Û A ›1• » è?øNº UA÷ ` Æ 1 µ=TW9 4 > › 75# B" A% , Ö @67Uº= TWM6?·\$ "i , D U= TW Ž E L5 5# ,, f Ç '2 µM6"x oº U » Z ` ĩM̄ , - 6 e) -Q 7 \ ,º 5 , - Ä e [8, fM6"x,º oº >

• PH K," -

ž\*95 #,,>|F6Nº U , TúH FµLŸ " ] p , 6B,³K, P " ] p , H K," CÁ ò ] • P > ^ ž\*9C] 7 u10Eª %oF ›3]5\_LĪ!ë,º7 ¥ A , 8 p / Ä ž\*95 #,,CĪ>|F6,ºNº UE' p p&p , B , , C ã 0 ›,º5 #,, ! ¤ •!™ O ĪA÷F 6Nº U > Ÿ o ]FP ž\*952 > PMI 75# A>, - \$ f ( ŰF 9™ á4ð Ç2 µª5Ä3 11 > c U ]F? • f , "G q • p Á IFP6ö -C Ĩ ÍF?ž , 5Ä6Š bC] 7 u10E ] , )½ < 7E' pTĪ#t,º 7 Ü > ^F 0 û è A , H K," Ž ^CÁ ò ] • P,º p P >

### fCY & D

b Û €+g µ UC]6x 3 ?L† φ. ' A1¶0& b φ. µ5L I, b φ. - ? c 3A÷- PAî %,° U  
 C] φ. ĚCz6B P xCz r, b Û € 0 Ä ># Í,° ¥, | b φ. /F Ñ ¥,° ü.¤] Â Â ¢] C '  
 1 < A÷, • C A÷ v; a,° ¥ Â 0Aä C P +U 1 < \* >  
 G " ( Ñ"x Û € » i,° Ø?ø = φ!™, | ½ c,°?ø&i =5 Að Â 0Aä ù Ñ ø69, ñ C ° F vF& ÷0,°  
 ' Ó ¢, ĚCz6; ¢š • 0,° 1 < ĚCz é10E D b φ. Â '6; © > ^ 1 < ù ð A, b φ. Lý Ž C  
 / 1 < ð µ+^ b Û € c,° 1 < » i v K, ° 1 < \* Û LL\* Û • gCU 1 < CY 1 >  
 b Û € (~ y ^ b φ. v ? , b φ. + • v ? y \_ > ` 5 b φ. Á ~ œM^Aî %, 1 < p ° Â ` ð C  
 Í 1 < ~ E61 (~ = C I = K+^ LEφE³ b Û €,° ŽG LG < » i, C Í Ā!W < 5 1 < ñ ð, L  
 1 < ð (â b φ. (~ y,° ñ i E µ+^ >, K+^ = @, N±# D 0 : p µ UC]6x 3 ?L† φ., J C Í  
 / b Û € F >, ? Ì Ò E,° K+^ = V8, Â \$ o >  
 µ UC]6x 3 ?L† φ. GÈ µ ] ĚCz6; Æ U 8 ? O Lÿ , > 8M6B^ „ -

### .J0- c ù 1¶

µ UC].J0- c ù ÿ µ φ. " C āC»CÀ= \* Ö N/ö", ° 7 P2ô/" Â" 1¶ < =+^ ù = Q æ = 2 E", ° LU  
 ½ L, " 0i c"x F = Ž Q F" p = 2 S) , ^ > ? ú = B = I P = 4 p", ° 5 : [ iJ¾ A , B 4 < .J0-  
 73 Ñ % FV F KN¼ φ. P x <, ° C { , ABO Lÿ 1x\* < ½ L > f+U ÷ ĚCz6; , Û Ø m = Û Ž = Û  
 6x R = Û /t P >  
 .J0- c ù Að1 Ò Ý ÷ .J0- LU =H ".J0- LU =L 73\$Æ.J0- LU =H =Ā>f+U ÷ .J0- LU =Q æ J  
 0- LU1 • Ê \.J0- LU , ?¼- ¼ Â?ø =H =Ā =H " =73 L = Ò (• 1 • ž ÷ 0 > f+U -, ° .J0-, ? 6 ~\* <  
 Að 0.v „ Ô = Ý P5 PĀ f = p ° C x ? ~, ° < Æ >, % Cé P x 6 p ° = Ý P Â ` ð ĚCz6; ,° M6  
 "x > B , , .J0- c ù ~ F ¼ Û = ž P = ž Û => Û =ª Û 1 • Ð U Û € Ā\$' Ü INÍ =>, ù < Æ =B9.J  
 Û € =! ¢, Á&iAú =10E+> Û € 1 • C Ð U Û € p q %,° .J0- Û € %31 , FPEý4íC^ / +k † Û € = φ . 5 † 1 =  
 φ M - = È % EφE³ =+k?ù+k & 1 • i E b b5 Ø m , Ñ ; p ĚCz6; Ñ žM~ = \$' > = „.J0- C x > š  
 L , .J0- c ù F P Ñ Ð I,° • • \_ i ~ = Ž B4NÍ .J0-1 • , % Cé Ø m,° ` ] L = I P LM6"x >  
 .J0- c ù ^ C x φ . P x,° B , , • 0% • f p UC] 8 p < 0@6)d10E > .J0- c ù D- 1xG L =u Ò  
 G L =>, P ... P = UC] Ú I v =Q W :2±.J0- p ° G3 ?-v µ # , ° Ú # w D > ' , ^ UC] >, P < = Ú I  
 10E+> W E = O Lÿ 1x\* < Ý I = ĚCz6; >, p 1 • iM~ • ¼ ¾ P f-ñ ].J0- >  
 ` ) , µ UC].J0- c ù < Ó Ž6x RCÀ/öH Ý ^ .J0- c, ° Cz\$Æ N ð , F 6! > c 0F8 > φ. < =F8  
 > UC] 8 p) æ (i,° .J0- W E , \* ³ C x φ . P x = φ . ÷ (, Â φ . N+ ) , F p φ . , ° ð f / ± 0 f >

### .J0- c ù 6Š31 i E

H =Ā>f+U ÷ .J0- LUÆ 020µ22836116 H ".J0- LU Æ 020µ22836117  
 L 73\$Æ.J0- LUÆ 020µ22836104 Q æ .J0- LUÆ 020µ22836114  
 Ò Ý ÷ . J 0 - LUÆ 020µ22836105  
 Ô φ f v Æ µ 8 \_ "é p j" • ] F% 1 - 0 ) = 0 c ù • Š 6 x  
 Fä u5L.7 Æ510627

**μ UC] P x < y 6?b**

μ UC] e]F | ÷ Ú I v ' P Ž - Æ 0225 μ#G | ÷ Ú I v ' P Ž - Æ 0225 μ# @#- UC] Ú I v ' P Ž - Æ 0338 μ# @#- 3L{73\$Æ Ú I c ù ' P Ž - Æ 8338 μ P Ž < f , c 3H = Æ UC] Ú I v ' P Ž - Æ 0196 μ Ú I 5 1 Í P Ž < f , % \* < 3 » v ? | ÷ UC] Á U y =H = Æ UC] ÷ 0 Ú I > L š Á V 5 UC] 5 4 à P x L , ç . % 6 < UC] Ě Cz Þ B = Cz Ý 1 x \* < = K , > , L \* p n 8 p Ú I O L Ÿ 1 x \* < † ç . P x > ç . q G f Ä μ , P x 99 \* ? ¼ - ž 3 , % p Ě Cz 6; Ñ 61 E , ° H = Æ C x >

**μ UC] q? · P x < y 6Š31 Ī E**

| @#- < ç .  | £ UD%:[ PG   | 9 :[ PG   | @#-L] ì j:[ PG   |
|--|--|---|--|
| 6Š31+kB Æ21-68905325<br>Ô ç f v Æ @#- 8#œ R æ<br>G D%69 - 1 ~ 12 x *k<br>â ² x 15 x μ 03 Ú   | 6Š31+kB Æ571-89809624<br>Ô ç f v Æ # " · - 7 £ 8 " · " p<br>UD%111 -Jç" · 3L{ , μ p<br>2 ~ 1301 Ú                                | 6Š31+kB Æ51269883586<br>Ô ç f v Æ c 3 ' " · 9 μ ß +gCn<br>IB P Â p 9 ( ) p 9 P #<br>p 9 c ù μ p 58 ~ 9 c ù<br>μ p Ô ç ² A Ý 07 x 07 - | 6Š31+kB Æ21-50568018<br>Ô ç f v Æ c 3 ' @#- μ ß +g<br>Cn IB P Â p R ì D%899 -<br>1201 1202 Ú         |
| μ RH = Æ Q æ p < ç .   | \$' i:[ PG   | ' \$ < ç .  | R9Ô:[ PG   |
| 6Š31+kB Æ757-88772666<br>Ô ç f v Æ μ R - 7 ' § 8 •<br>#- p#- Ê D%28 - , , • 3L{<br>H = Æ c ù 2 ~ 2302 u                            | 6Š31+kB Æ755-83533302<br>Ô ç f v Æ μ R - 7 \$ ' i 8 / Â + f p<br>» Í > • F % » Í D % % C À » Í c ù μ<br>p ' • p μ A Ý 704A = 705 | 6Š31+kB Æ757-88772888<br>Ô ç f v Æ ' § 8 / » p / Ç Ī<br>> • F % ° T M , Ê D % 7 - 2 Ý 3006<br>Ú                                       | 6Š31+kB Æ76922900598<br>Ô ç f v Æ μ R - 7 R 9 Ô 8 •<br>> • F % ? y D % 2 - 2 Ú f ] Ü Ô<br>ç 1501B    |
| μ % 6è c ù:[ PG  | \$; F :[ PG  | 6½ ¼:[ PG   | , , • < ç .  |
| 6Š31+kB Æ20-28180338<br>Ô ç f v Æ μ 8 _ " é p %<br>6è RD% 36,138 - 17 x 0225 -H 986 & Í L ~ £ - ² 2 x 04 =<br>u = 17 x 03 u 8 5L A | 6Š31+kB Æ763-3808515<br>Ô ç f v Æ μ R - 7 \$ ; F 8 M • / Â D %<br>05 = 06 -  | 6Š31+kB Æ758-2270761<br>Ô ç f v Æ μ R - 7 6 ½ ¼ 81 %<br>p U \$ Ç E ] F % ° £ D % 6 - ] F - L<br>1b 6 ~ O ì x 04A                      | 6Š31+kB Æ20-61887585<br>Ô ç f v Æ μ 8 • " Ī p # - %<br>D % 171 - • " Ī H = Æ ] Ü 1b<br>8 x 8 5L 803B |
| M â < ç .  | \$ Ç E M < ç .   | \$ R < ç .  | G :[ PG  |
| 6Š31+kB Æ10-63360528   | 6Š31+kB Æ27-59219121   | 6Š31+kB Æ   |  |