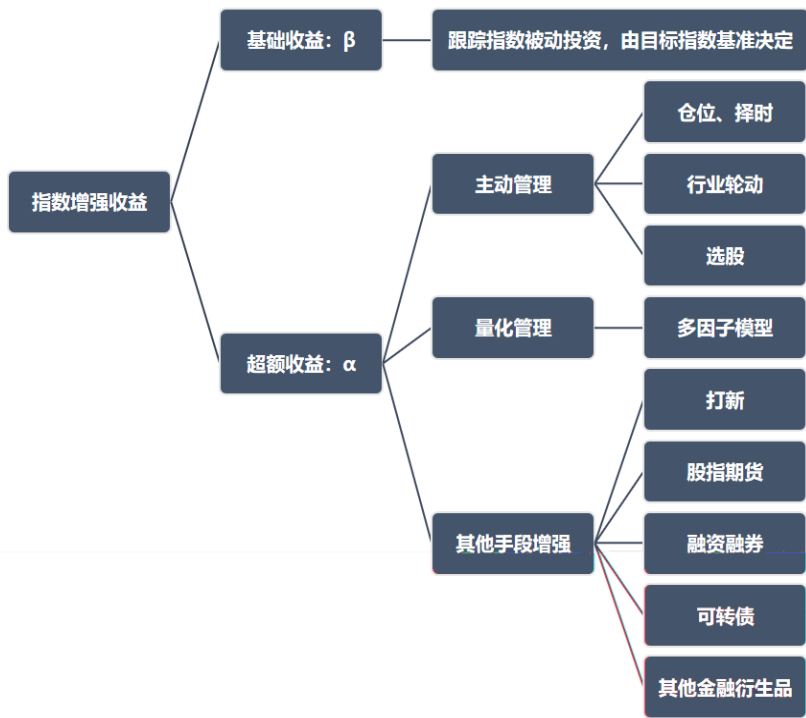


F3084112  
Z0016329  
wang.jingjie@gzf2010.com.cn

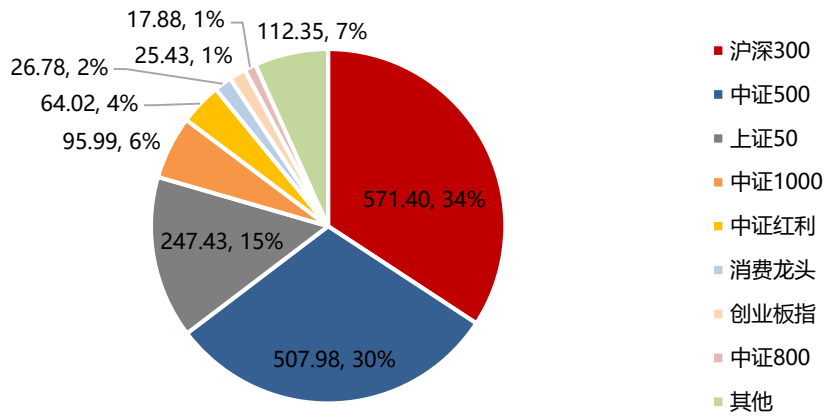
F03088273  
chen.lei5@gzf2010.com.cn

.....  
.....  
..... 2  
..... 5  
.....  
.....  
.....

+

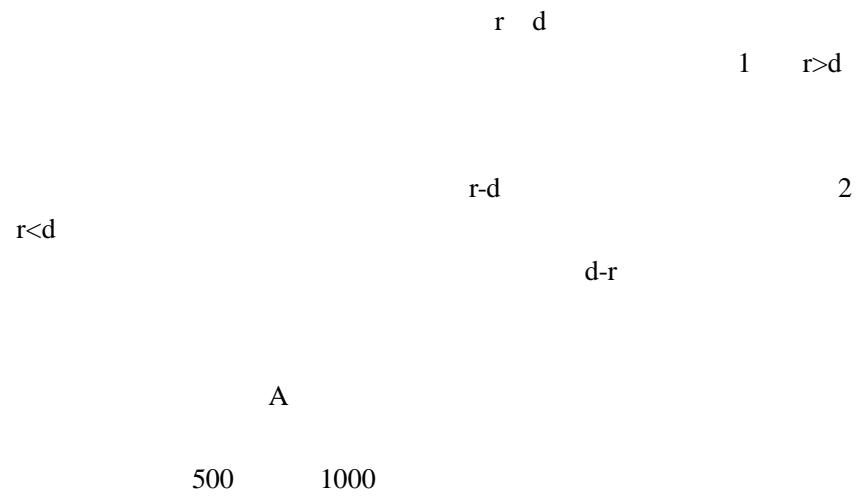


Wind



Wind

		300	500	
500	50		250	
1000	100	1422.80		
85%				50
		1		2
	/			3



	IF								IH								IC															
2010	141	169	174	174	33	5	0	0																								
2011	158	225	243	244	86	19	1	0																								
2012	174	214	227	243	69	29	16	0																								
2013	104	123	148	193	134	115	90	45																								
2014	123	136	147	175	120	109	98	70																								
2015	76	96	91	102	168	148	153	142	48	44	48	55	129	133	129	122	20	10	7	4	157	167	170	173								
2016	9	0	0	0	235	244	244	244	13	0	0	0	231	244	244	244	18	0	0	0	226	244	244	244								
2017	46	22	18	19	198	222	226	225	91	100	102	100	153	144	142	144	17	1	1	0	227	243	243	244								
2018	71	68	72	62	172	175	171	181	118	115	119	124	125	128	124	119	38	2	0	0	205	241	243	243								
2019	97	96	75	35	147	148	169	209	101	89	76	56	143	155	168	188	41	16	4	3	203	228	240	241								
2020	48	30	19	14	195	213	224	229	56	42	30	13	187	201	213	230	32	3	0	0	211	240	243	243								
2021	58	29	18	2	185	214	225	241	89	73	58	34	154	170	185	209	41	4	0	0	202	239	243	243								

Wind

5

50

IH            300            IF            IC IH

IH   IF

IC            IM            IC

1000

IM

IF	

Wind

500

1000

IC

9%

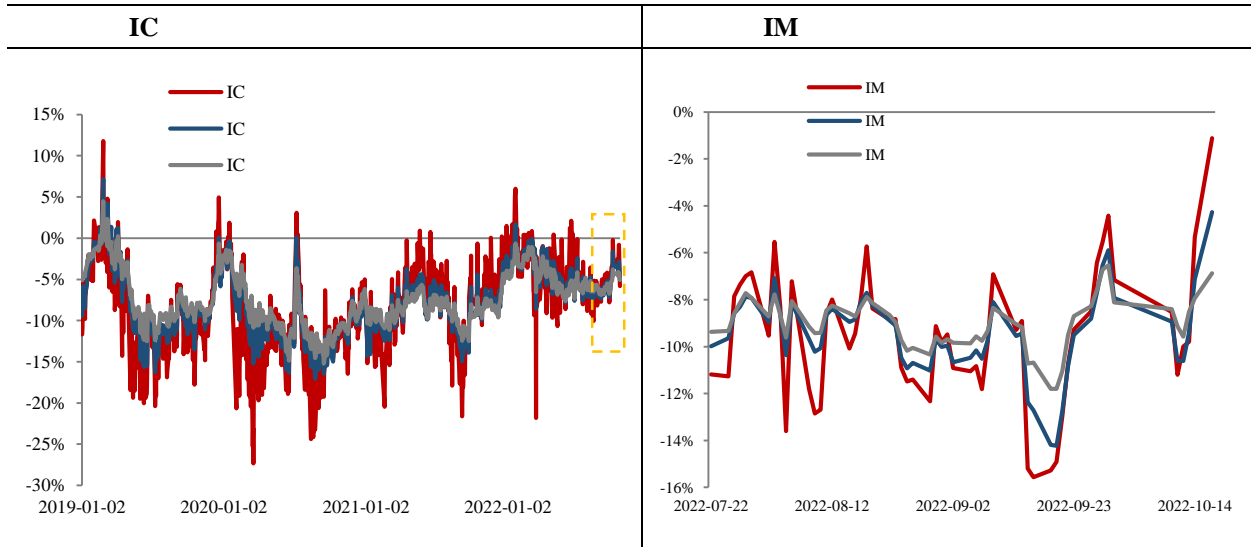
8%

IC

IM

10%

7%



Wind

30%

70%

2%

2019

ETF

ETF						
		ETF				
2019	300	40.53%	45.00%	42.61%	4.47%	2.08%
	50	37.81%	40.88%	39.10%	3.07%	1.29%
	500	29.39%	46.94%	40.08%	17.55%	10.68%
2020	300	27.43%	31.24%	31.26%	3.82%	3.83%
	50	19.66%	22.00%	22.83%	2.33%	3.17%
	500	21.16%	32.26%	32.03%	11.10%	10.87%
2021	300	-4.87%	-1.59%	-1.01%	3.28%	3.86%
	50	-9.20%	-7.57%	-5.85%	1.63%	3.35%
	500	15.29%	20.87%	26.26%	5.58%	10.97%
2022至今	300	-22.62%	-20.70%	-21.14%	2.38%	1.83%
	50	-22.17%	-22.79%	-22.61%	-0.77%	-0.53%
	500	-17.36%	-13.96%	-13.91%	4.21%	4.28%
IM	1000	-9.44%	-3.79%	-4.98%	22.62%	17.85%

Wind

2022 10 21

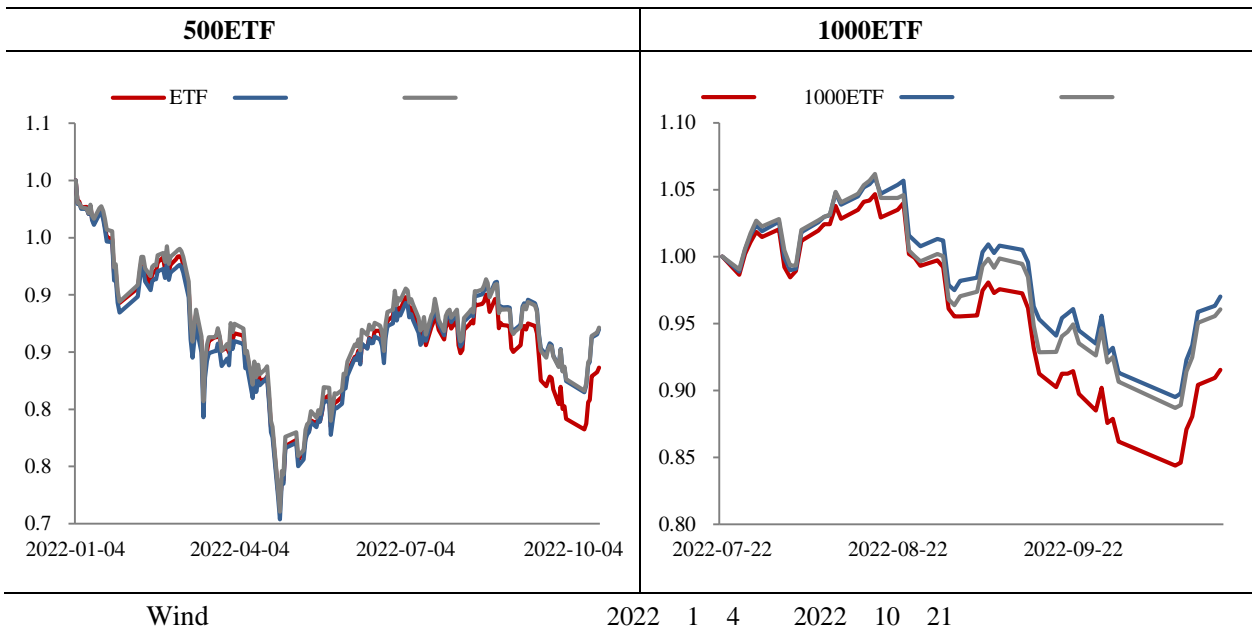
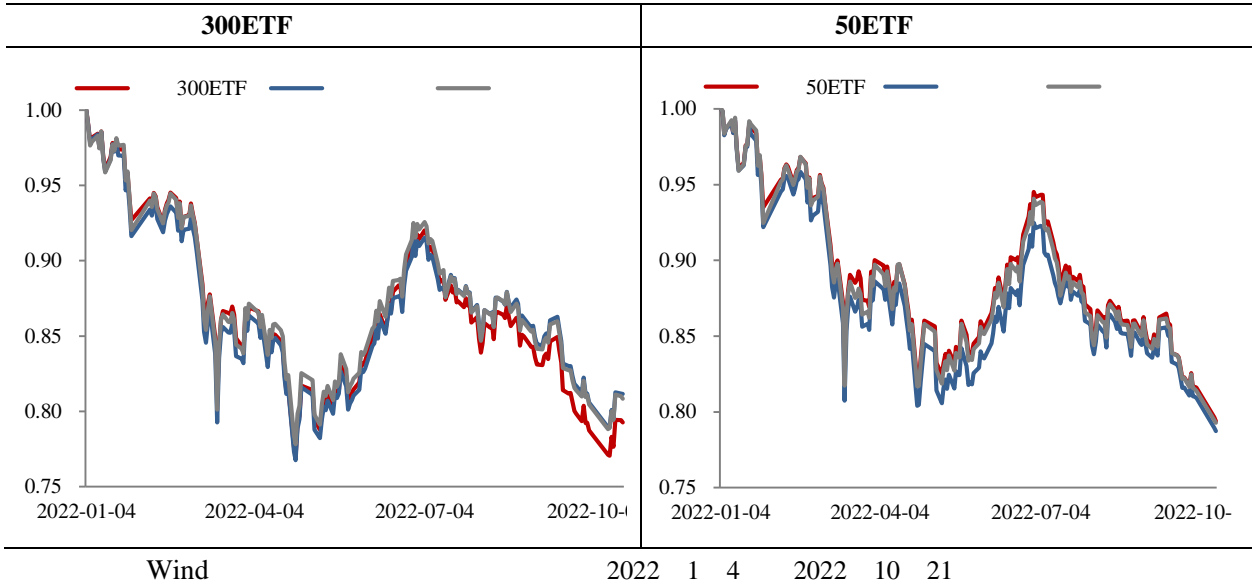
1 2019-2021  
2021 IC  
2 2022

IC  
IC  
10%  
IC

IC>IF>IH

4% IH  
3 2022 7 22 IM

22.62% 17.85%



IF IH IC IC

alpha

IPO 500 A

300 50

alpha

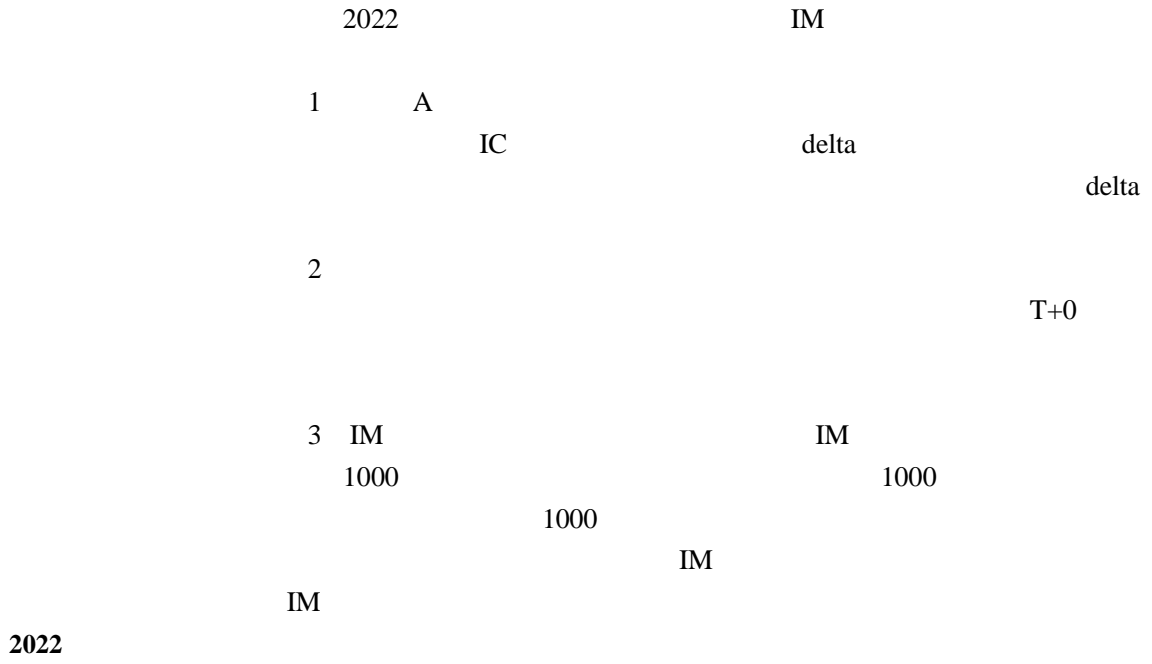
500 +IC

500

IC

IH IF







“ “ ” “ ”  
“ ” “ ”

/

020 22836116  
020 22836104  
020 22836105

020 22836117  
020 22836114

1

6

510627

0196	0338	0225	8338	0225
<hr/>				
<hr/>				
<hr/>				
021-68905325	0571-89809624	0512-69883586	021-50568018	
69	1	12	111	
15	03	2	1301	