



- -
-20230208



- - 2305

2306-20221206

- - 1-2

IH2212 -20221130

- - PVC2301

-20221123

- - 2301

-20221115

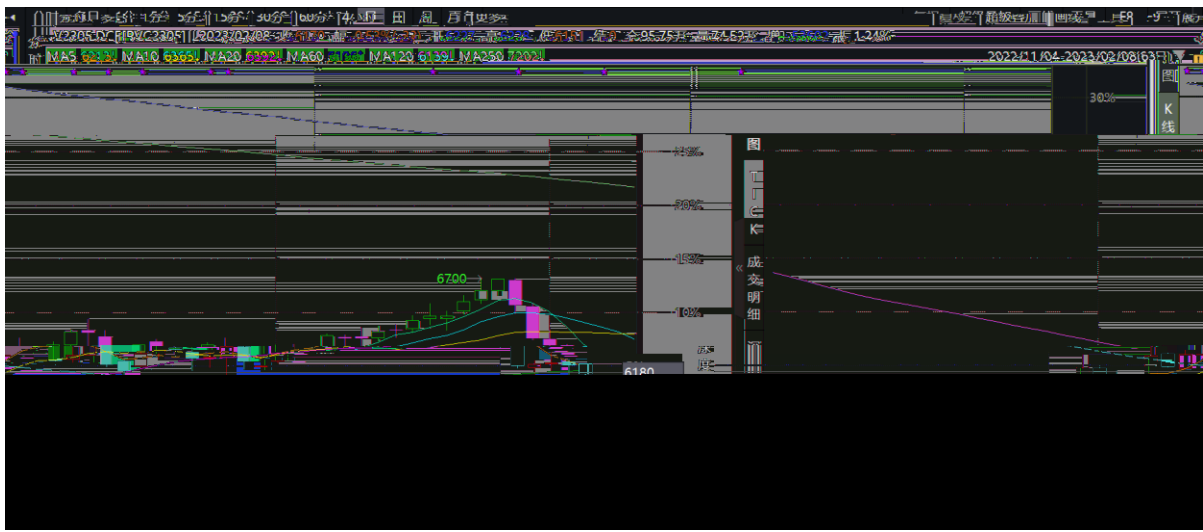
PVC PTA -20220706

.....
..... 1
PVC2305 1
.....
OI2305 **P2305** 2
CF305 3
 2306 4
.....
2305 - 5

.....
.....
.....

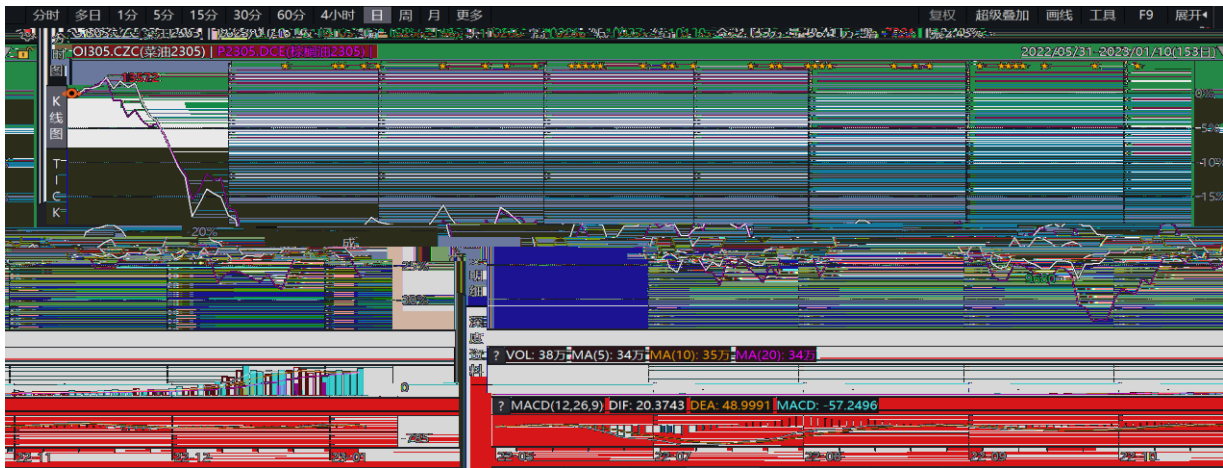
	CF305C16000+CF305P14000		
2 7		290 310	/
250,290		0 20	1 1.2
540			
	30%		70%

		CF305C16000+CF305P14000	
2	7	290	310 /
250,290		0	20
540		1	1.2
30%		70%	



		OI2305	10234 /
1	9	12%	OI2305
9%	P2305	7988	/
9210.6	P2305	9585.6	

18796.2 20 10
 2380,2430 2580,2630 2180,2230
 20% 80%
 100 20
 80



1 10 CF305 14370 14480
 KDJ 14200 14300 /
 13700 , 15050 15150
 1 55
 30% 70%

--	--	--	--