



01



02



03



04



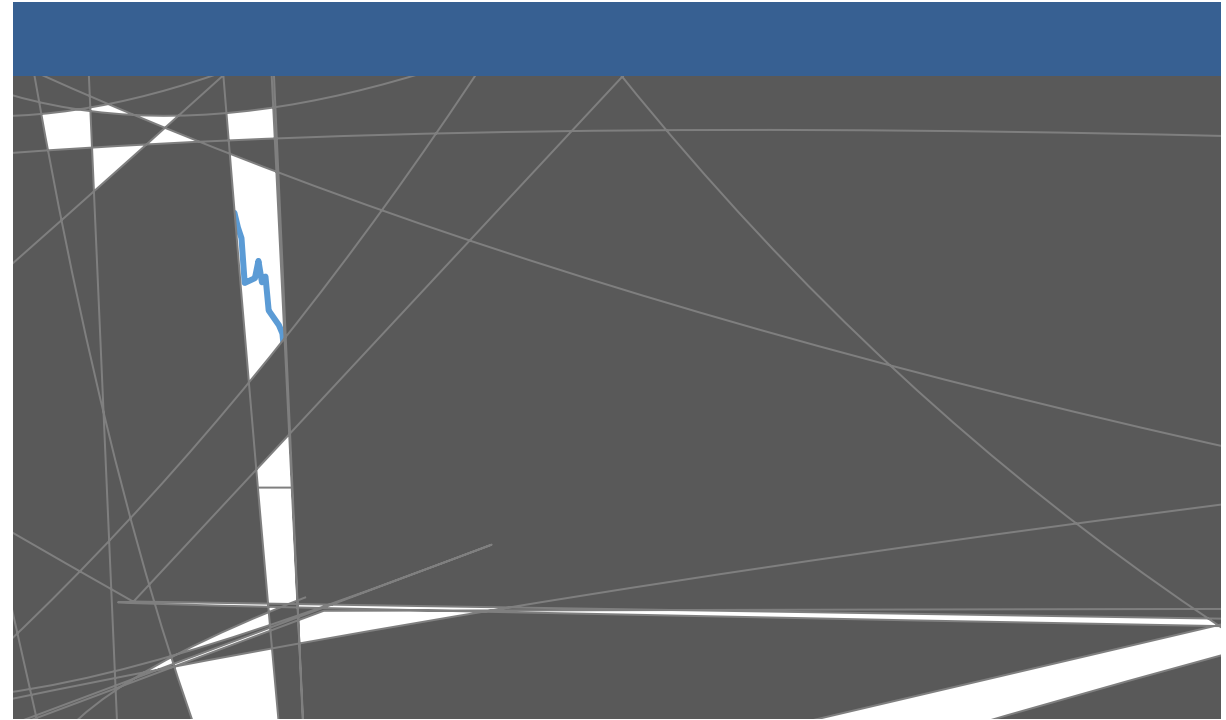
05



06



LME



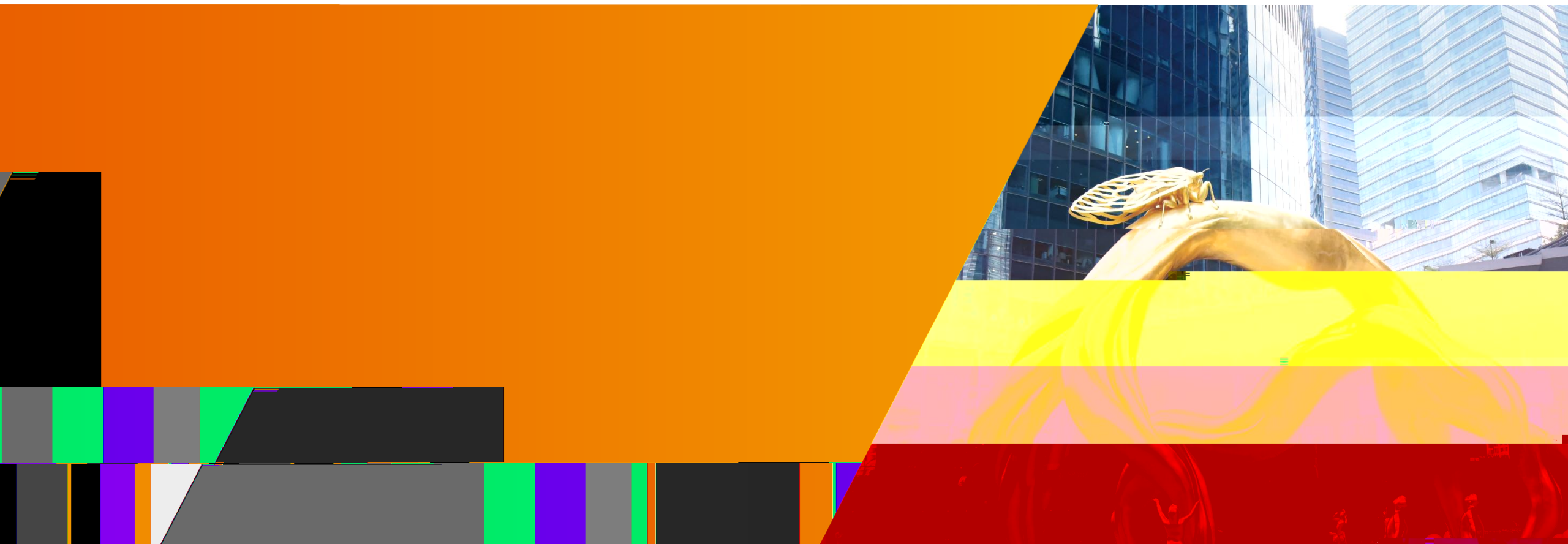
Wind

✓

✓







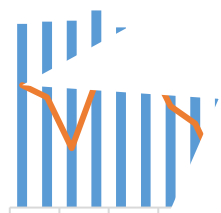


11

+3.5%

2023

TC 88 /



CSPT

93 /

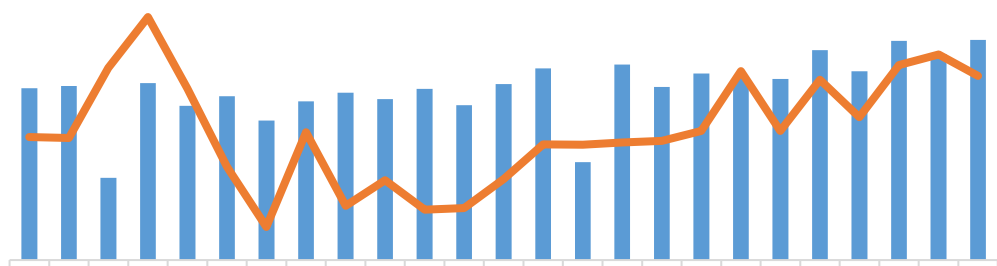
77.81 /

2

90.78

+6.4%

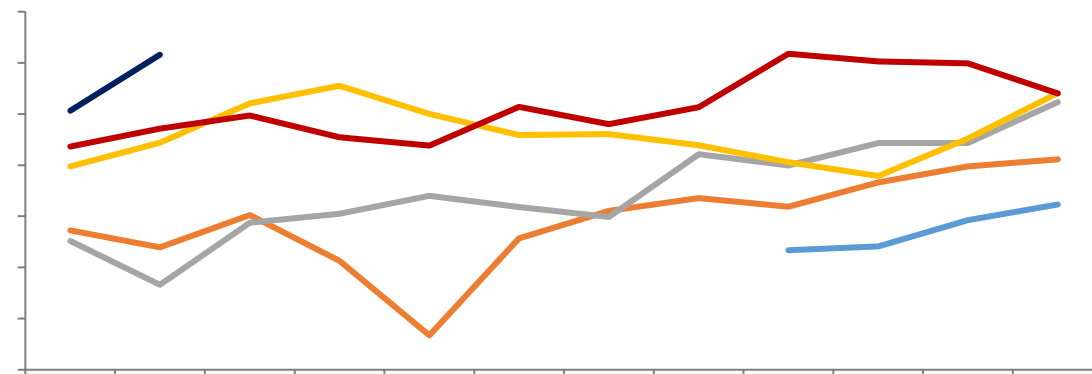
+6.49%



—

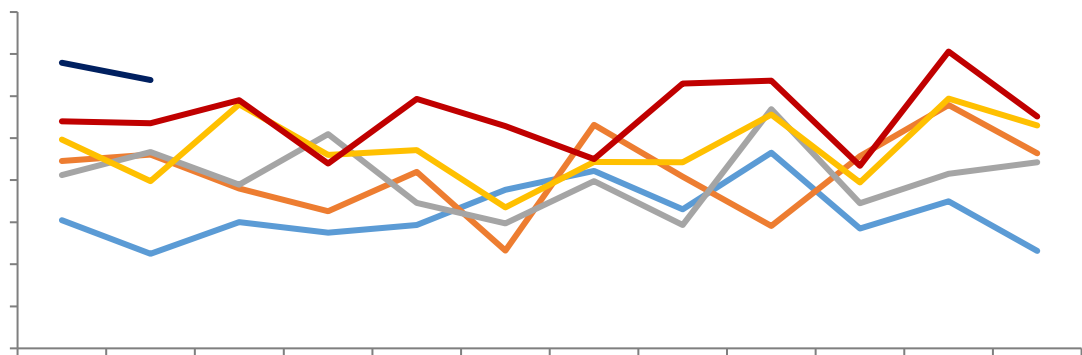
—

SMM



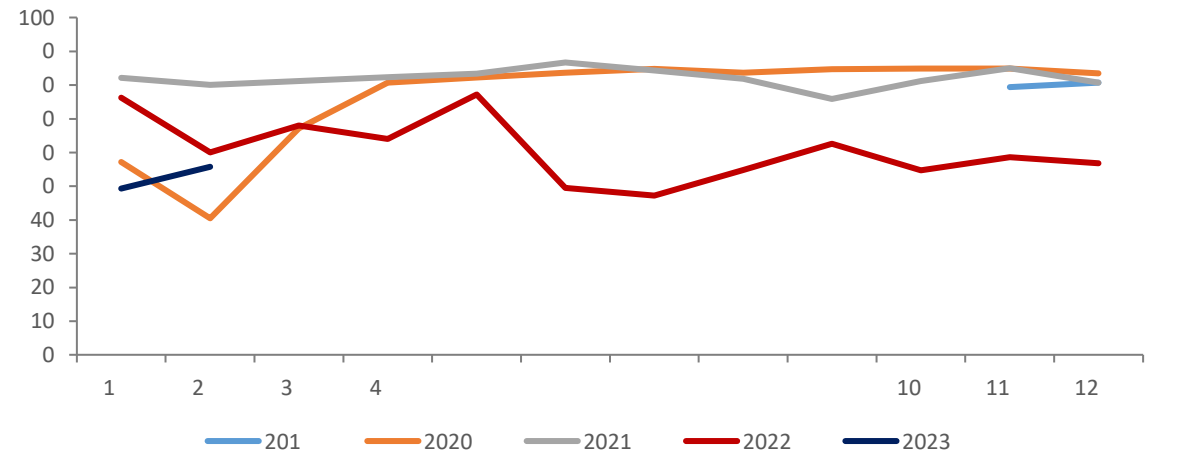
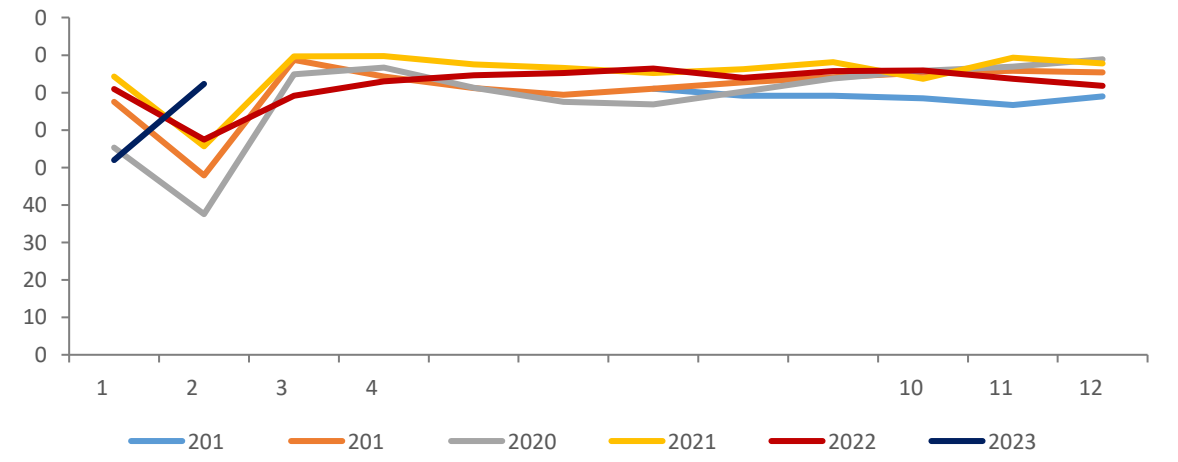
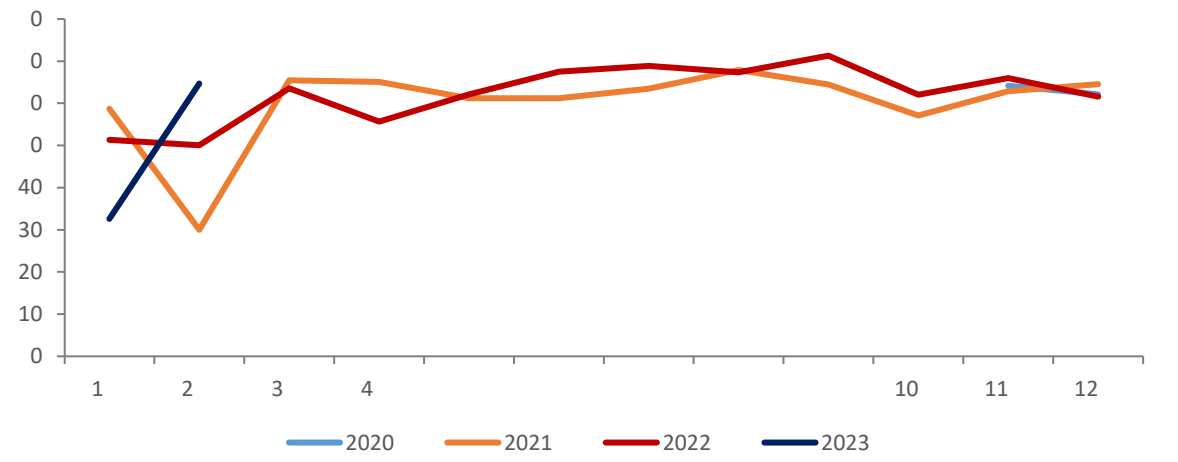
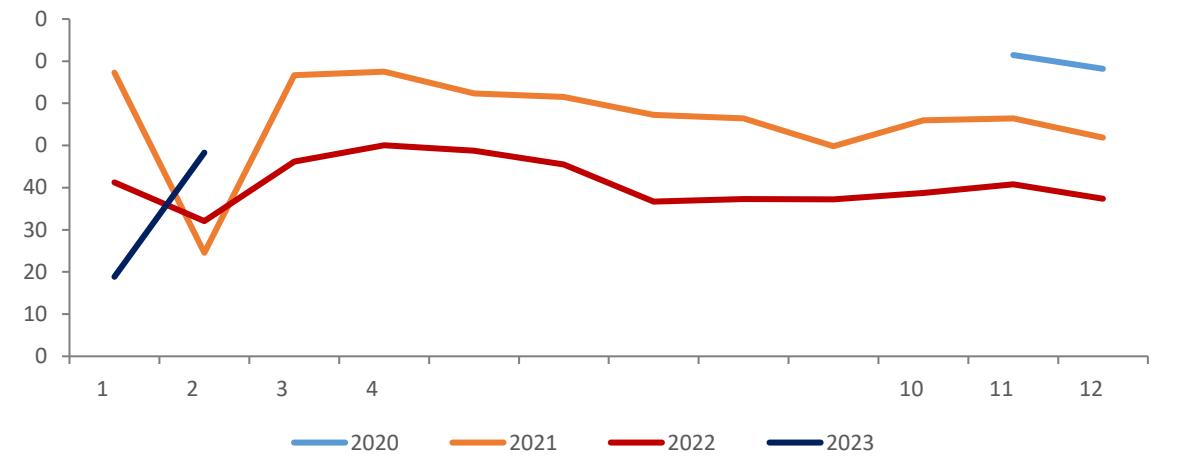
# 1800-2000

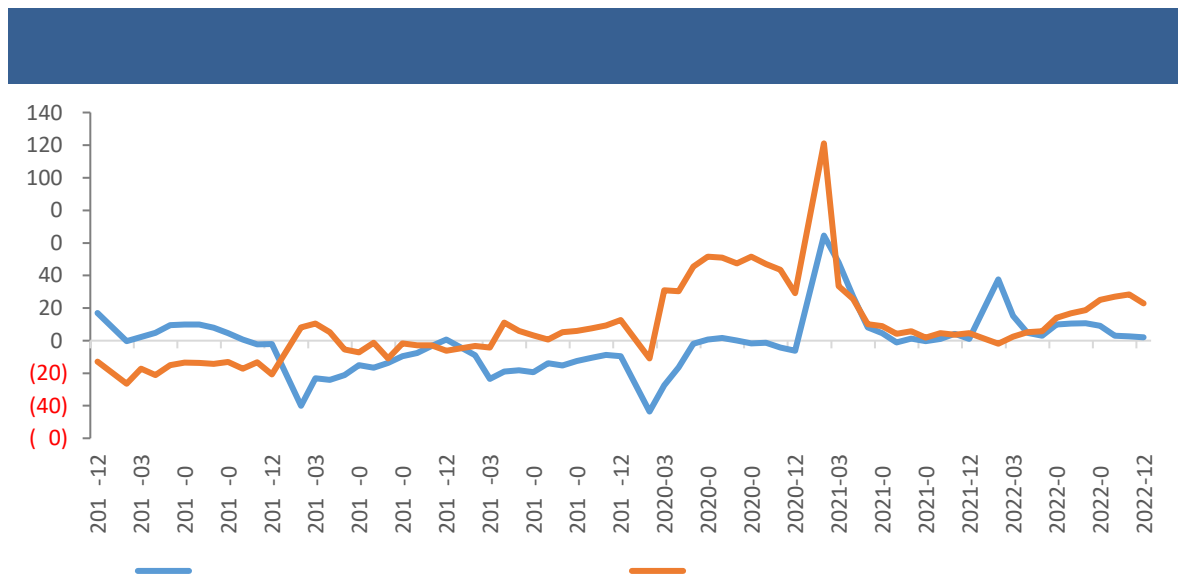
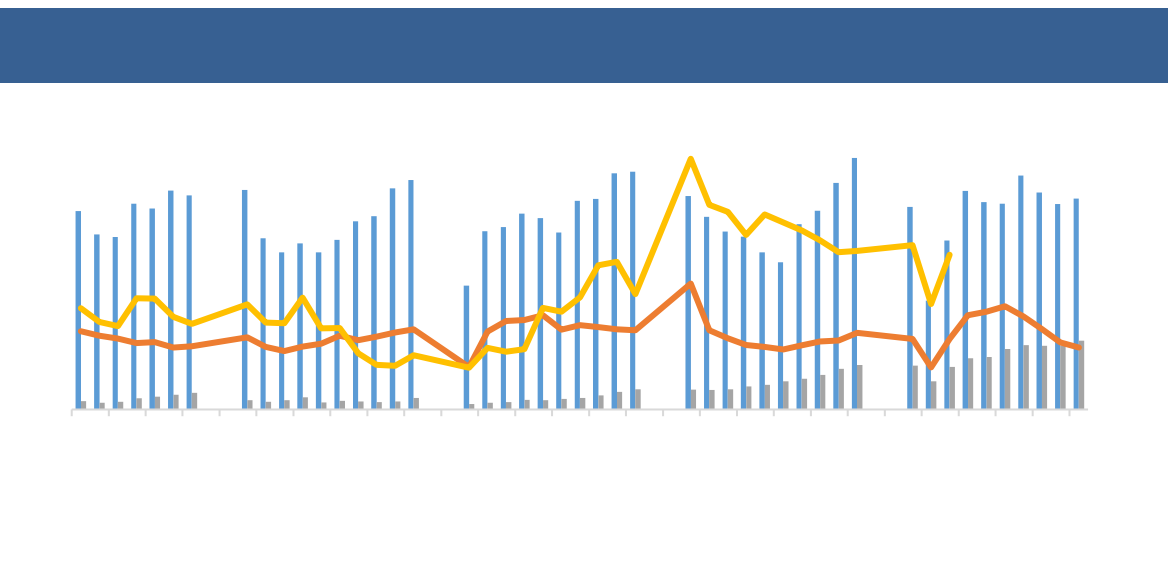
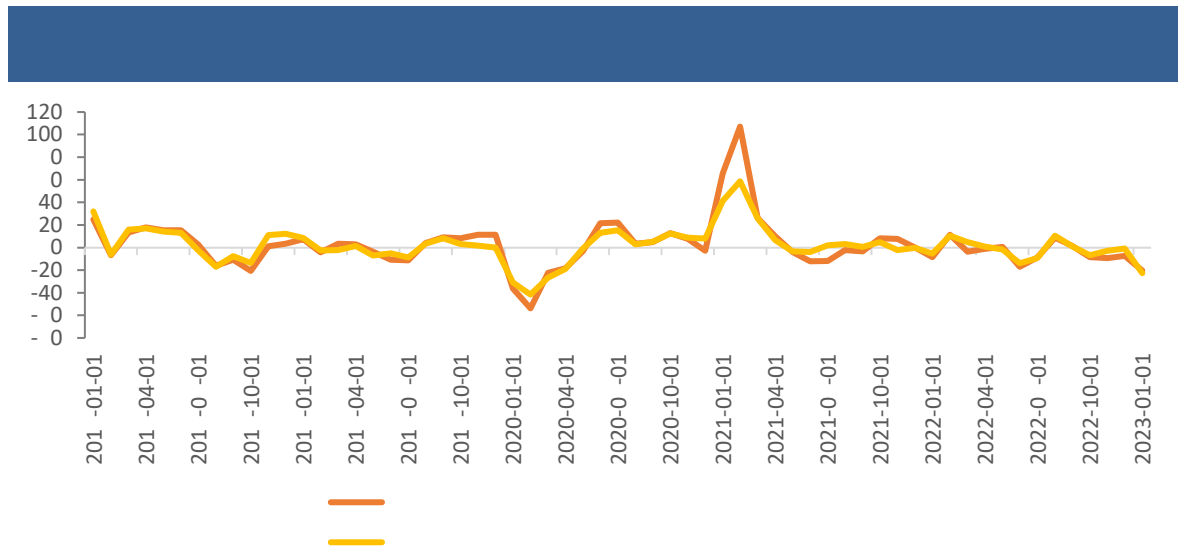
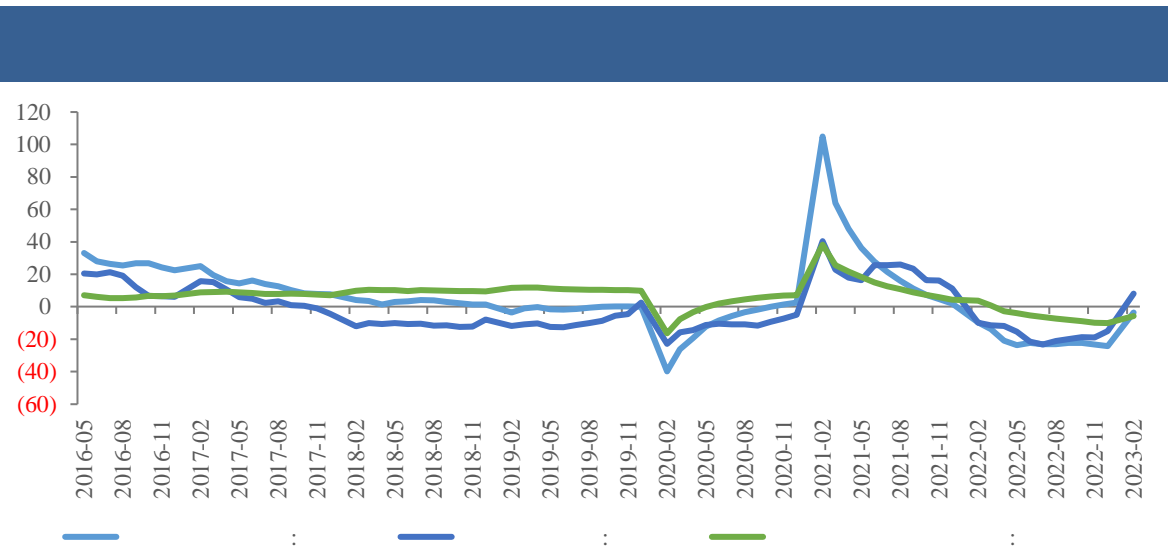
1800-2000

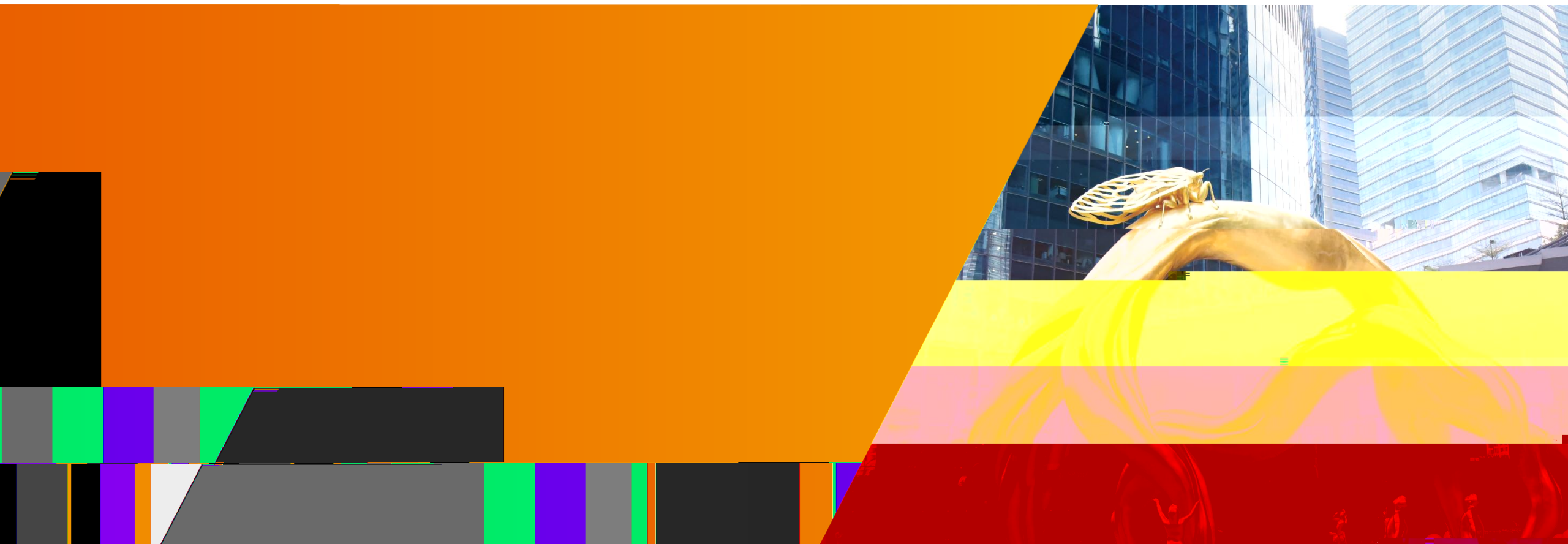


—







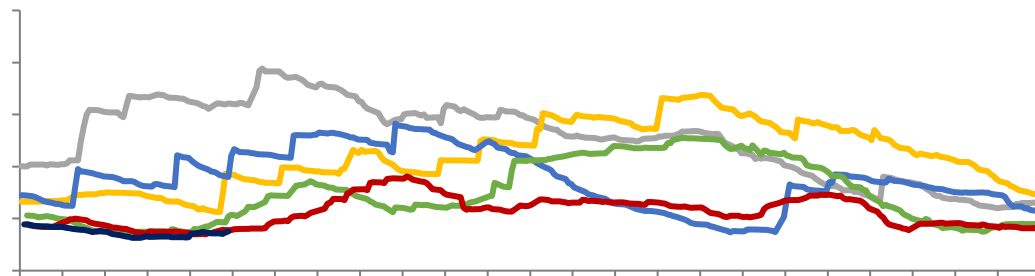




# LME COMEX

SHFE

LME



COMEX

SHFE

LME



# BACK

---

-

- BACK

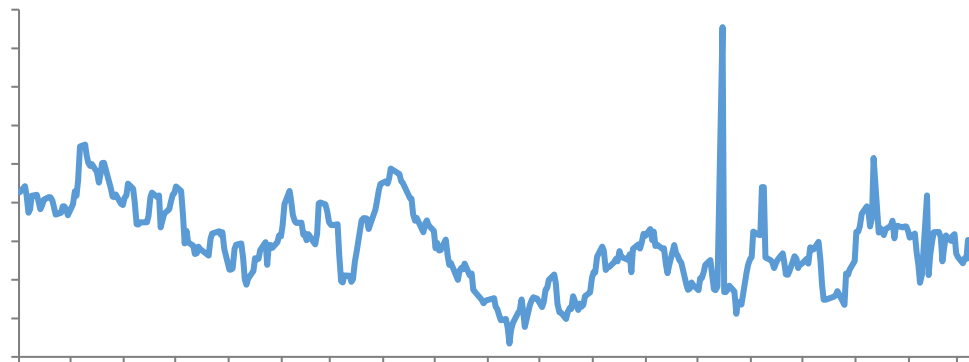
LME0-3 9.75



# CFTC

CFTC

LME





/

---





021- 68905325 12 15 03 69 1	0571-89809624 2 1301 111	0512-69883586 A 07 07 58	021-50568018 899 1201- 1202
0757-88772666 28 2 2302	0755-83533302 A 704A 705 57 2 3006	0757-88772888	0769-22900598 1501B 2
020-28180338 136,138 17 02 17 03 A	0763-3808515 25 2 04 05 06	0758-2270761 36 04A	020-61887585 8 803B 171
010-63360528 -5 32 101 12 1211 24 1	027-59219121 A 14 1401-9 193	0531-85181099 B 906 8	0371-86533821 80 1 2 23 2301
0532-88697833 8 801 6	028-83279757 6 802 4 12	020-22836158 6 1	020-22836155 6 1
020-22836182 6 1	020-22836185 6 1	021-50390265 388	701

