

2012 1497

F3098791  
Z0017690  
fan.hongjun@gzf2010.com.cn

2022.8.2 ---

2022.8.29 ---

2022.10.9 ---

2022.10.31 ---

-

.....	1
.....	1
.....	1
.....	2
.....	2
.....	2
.....	3
.....	5
.....	6
.....	7
.....	8
.....	9
.....	9
.....	10

5

CBOT

5 USDA

5

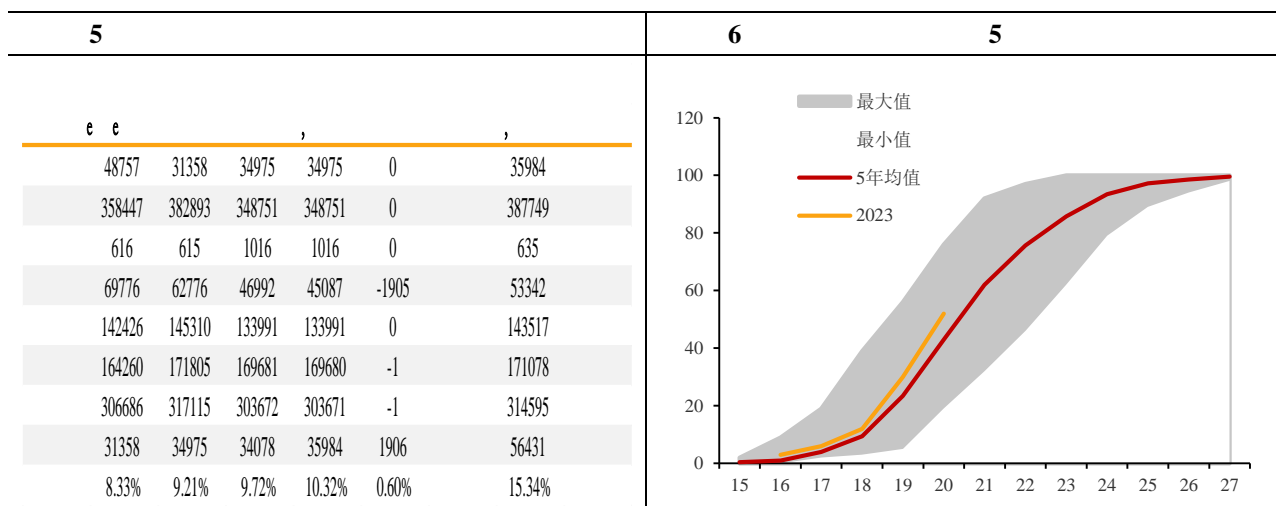
4

-

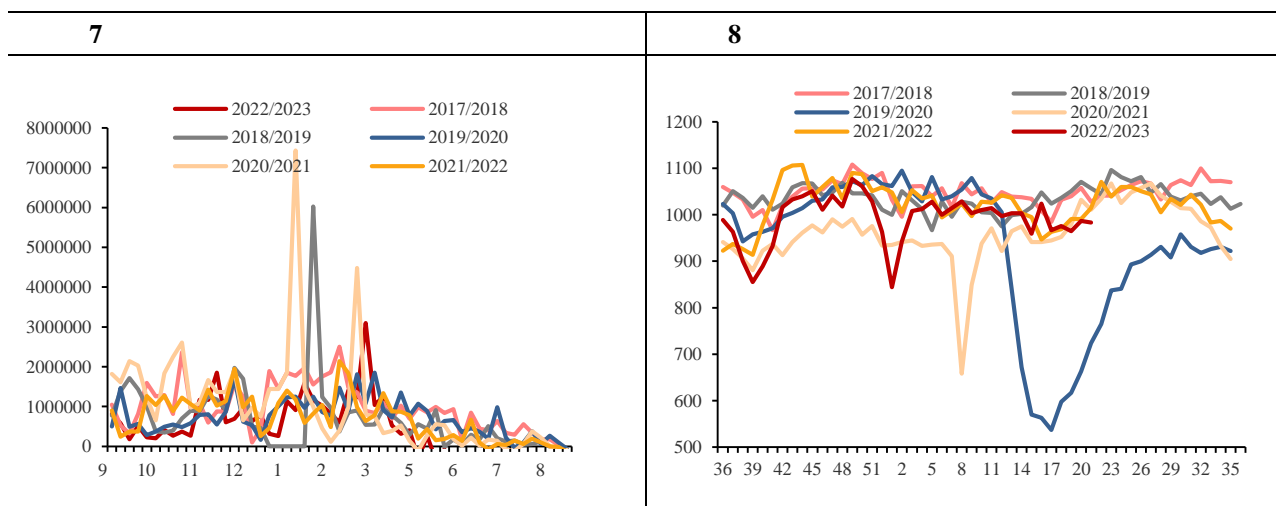
50      5      -      9      1  
2305  
2309      200 /



USDA

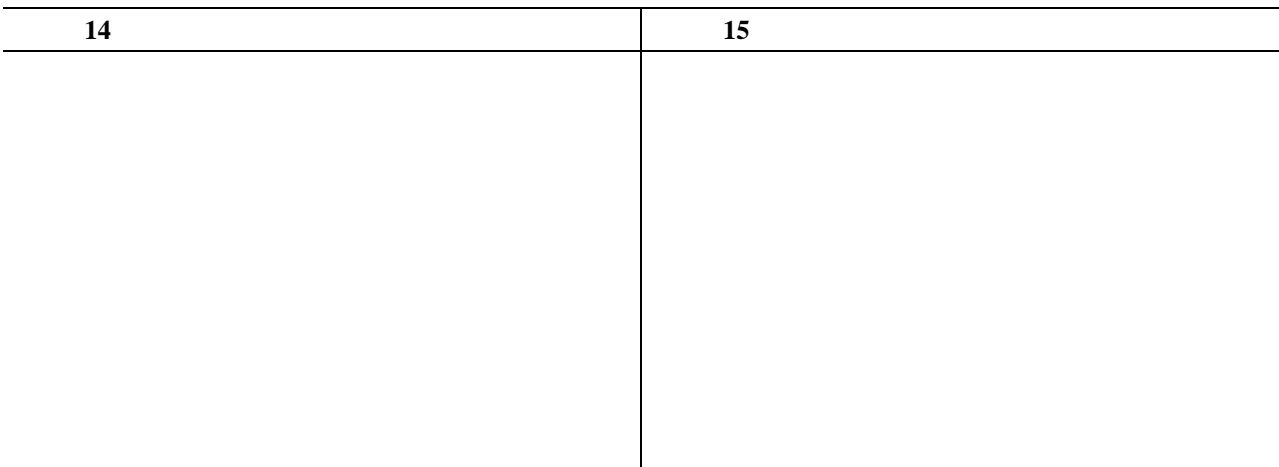
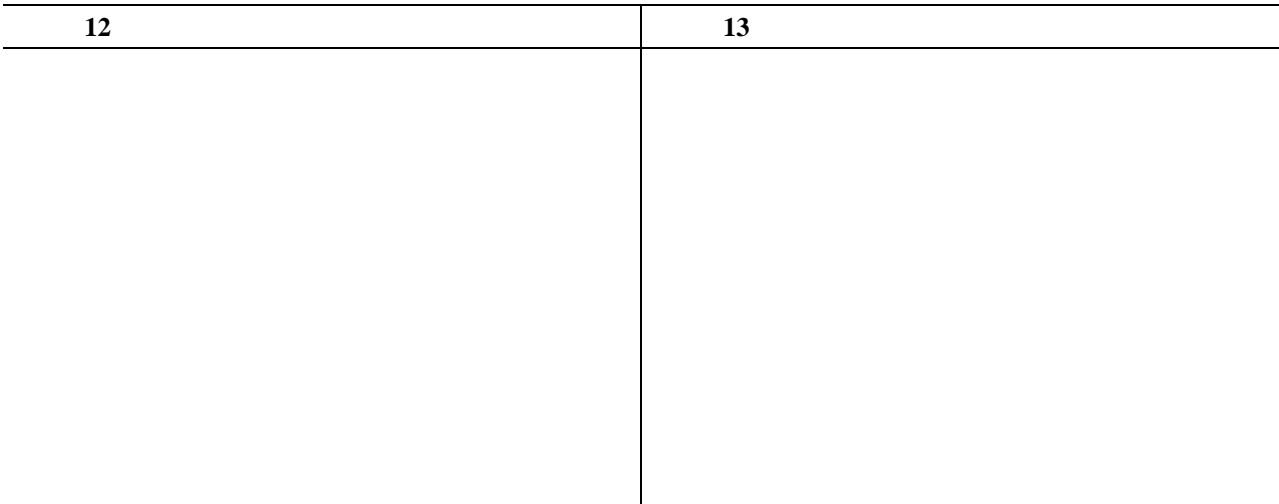
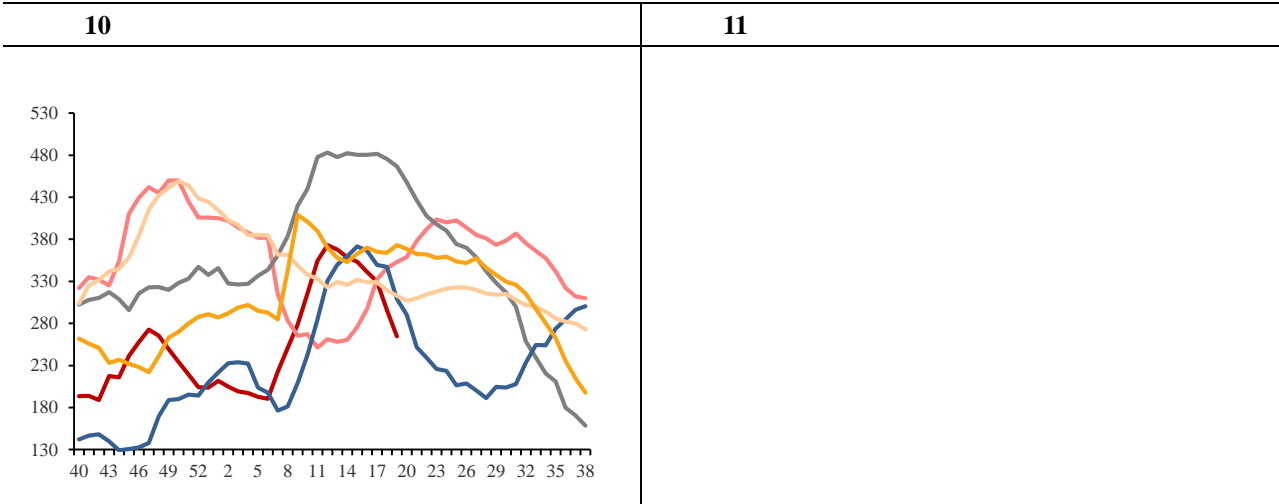


USDA



USDA EIA

9	2014/15	2015/16	2016/17	2017/18	2018/19	2019/20	2020/21	2021/22	2022/23
	100.9	178.4	260.7	250.0	195.0	146.9	94.4	101.1	106.3
	249.8	265.0	216.0	196.0	201.0	196.0	191.0	216.0	216.0
	133.0	137.0	169.5	185.0	174.9	182.0	205.0	200.0	205.0
	63.0	64.0	74.0	83.0	86.0	85.0	88.0	85.0	85.0
	196.0	201.0	243.5	268.0	260.9	267.0	293.0	285.0	290.0
	53.8	64.0	-27.5	-72.0	-59.9	-71.0	-102.0	-69.0	-74.0
	5.3	3.2	2.5	3.5	4.5	7.6	29.6	21.9	17.0
	8.6	5.9	8.1	8.1	5.2	6.0	12.1	8.3	9.0
	9.1	8.3	5.2	4.4	0.7	3.7	8.7	11.0	5.0
	5.0	5.0	5.0	5.0	5.0	5.0	43.0	15.0	25.0
							25.0	28.0	15.0
	23.7	18.3	16.7	17.0	11.8	18.5	108.7	74.3	63.9
	178.4	260.7	250.0	195.0	146.9	94.4	101.1	106.3	96.2
	162.1	251.5	214.0	114.0	92.0	15.0	23.0	33.0	33.0
	16.3	9.2	36.0	81.0	54.9	79.4	78.1	73.3	63.2





22	23

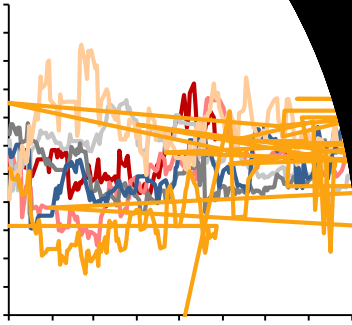
Wind

24	25

Windinddind



28



Wind

30

-

Wind

32

-

33

-

Wind

USDA5				
7000	1500	3.13		
5 USDA		7500		
14.17				FSI
	8.05	22.22		



		0225		0225
	0338		8338	
0196				