

F3022666
Z0013612
xuky@gzf2010.com.cn

5

66000 64000

LME

3.3

6

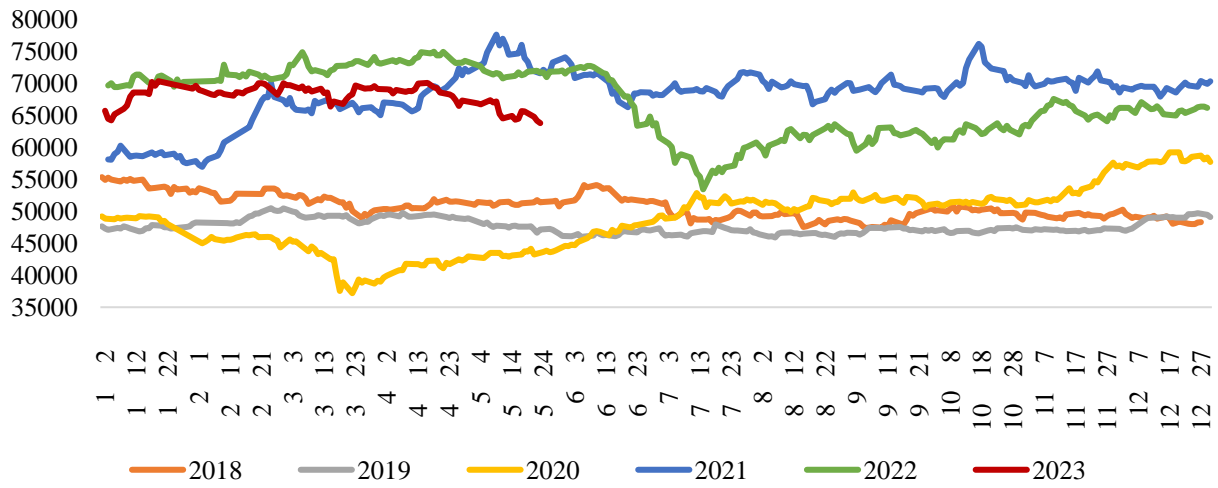
6

CU2307

62000-66000 /

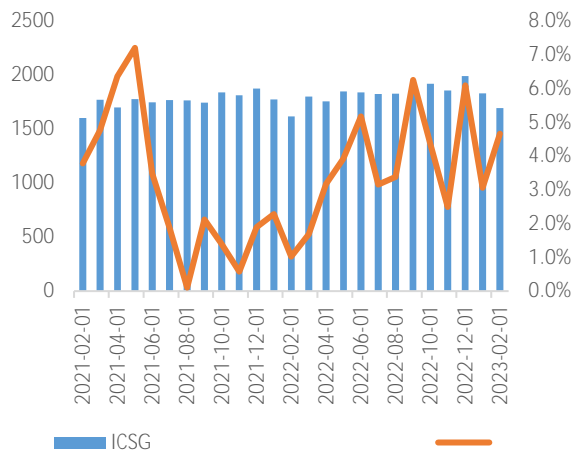
5

1



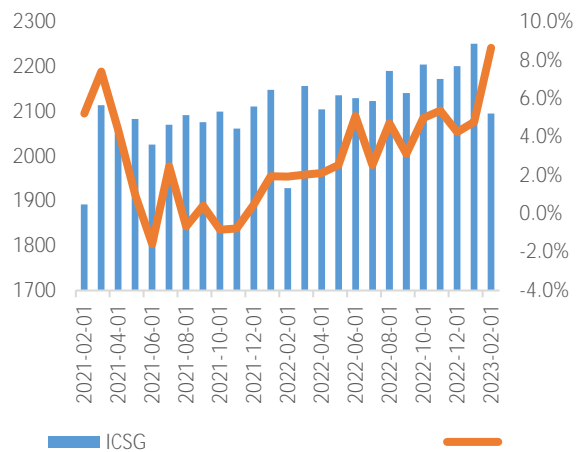
2 2

+4.7%



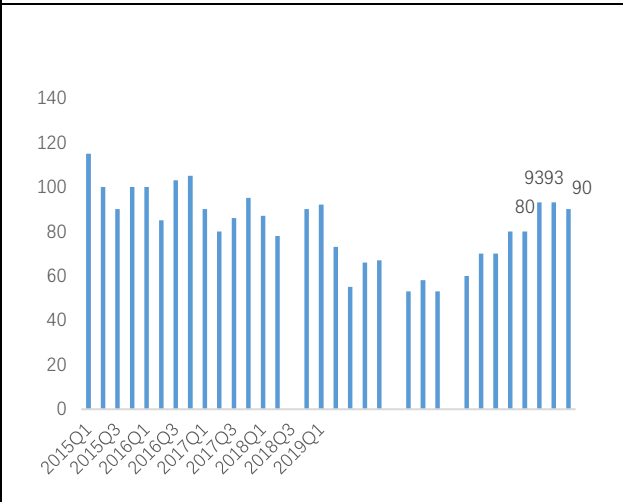
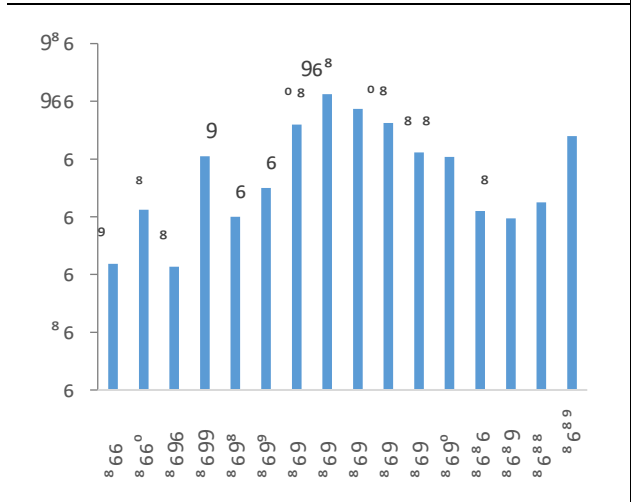
3 2

+8.7%



Wind

4	TC	/	5	CSPT	90
---	----	---	---	------	----



SMM

6	4	97	+17.2%	7	TC
---	---	----	--------	---	----



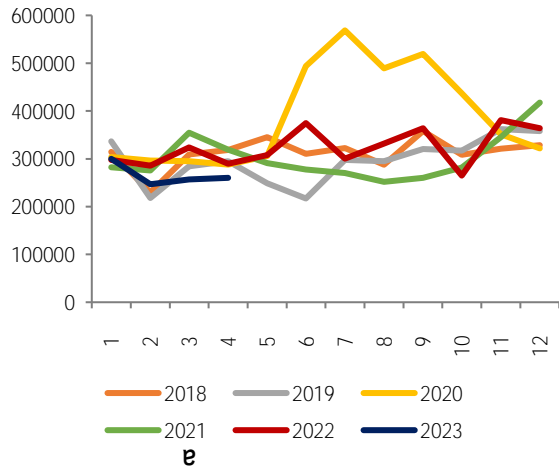
iFinD Mysteel

8				9	
---	--	--	--	---	--



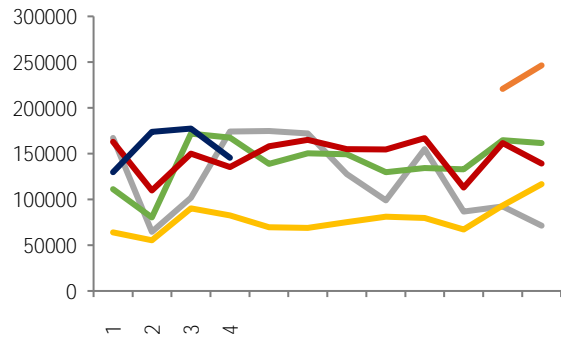
Wind

10



Wind

11



12

Wind

13

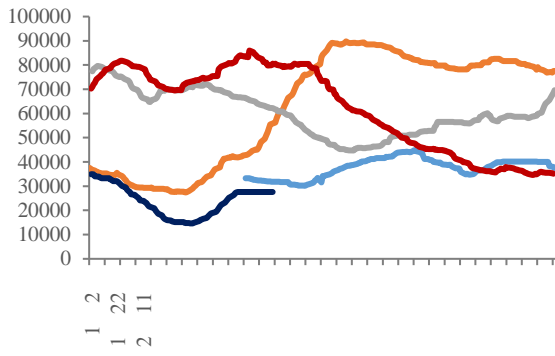
14

Mysteel

15

22 COMXE

23



Wind

LME

24

-

25

-

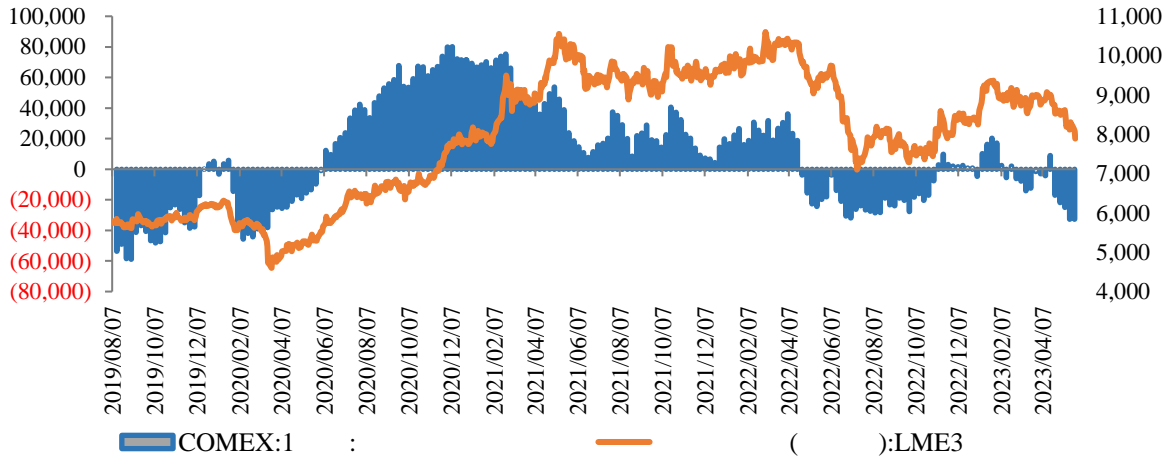
Wind

26 LME0-3

27

Wind

28 CFTC



Wind

	1		4	PCE	4.4%	
	4.3%	4.2%	0.4%	0.3%	0.1%	4
		0.8%	0.4%		0.1%	
	2	4			4	
	105.9		14.1%	1-4	411.1	
	12.9%	4		189.6	12.4%	1-4
	687		6.9%			
	3	4		1.1%	1.0%	4
			1.1%	1.0%	3.2%	4
					1.4%	0.1%
		0.6%				
	4				2023	4
		1808.7		12.0%	1791.0	13.3%
			1059.7		29.7%	731.3
	4.3%			5.7%		

“ ”

