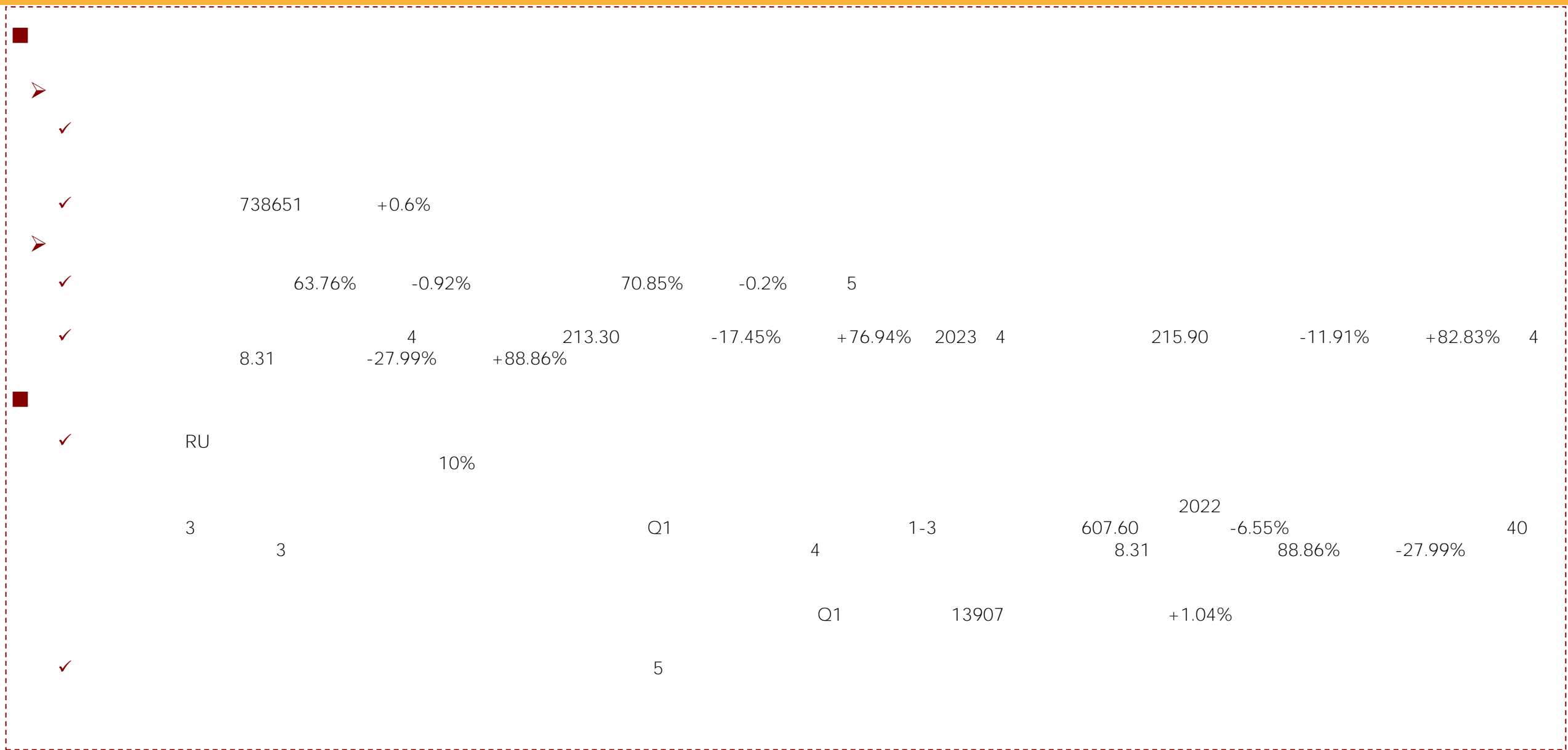


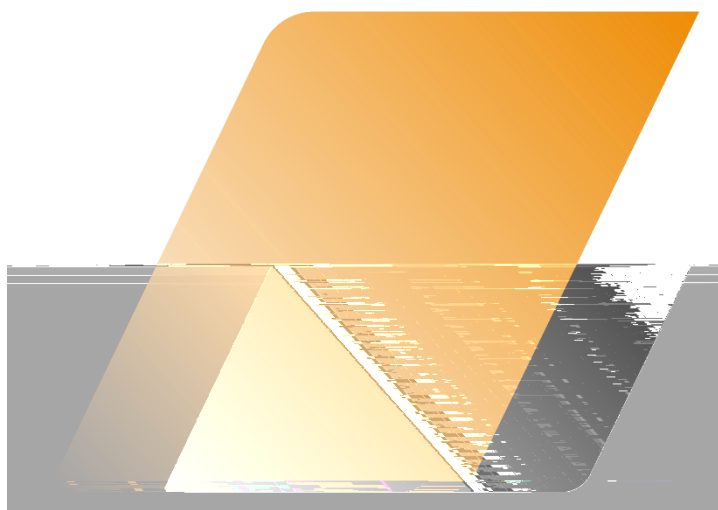
RU

2023 5 28



RU





 01

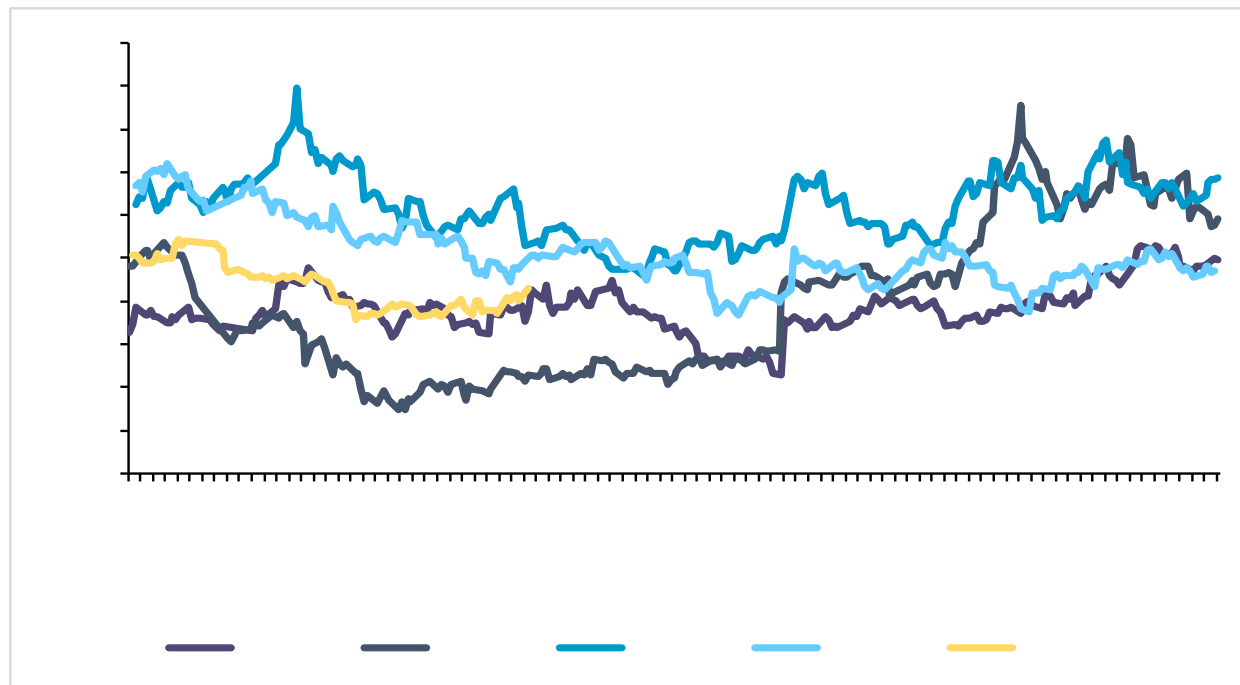
 02

 03

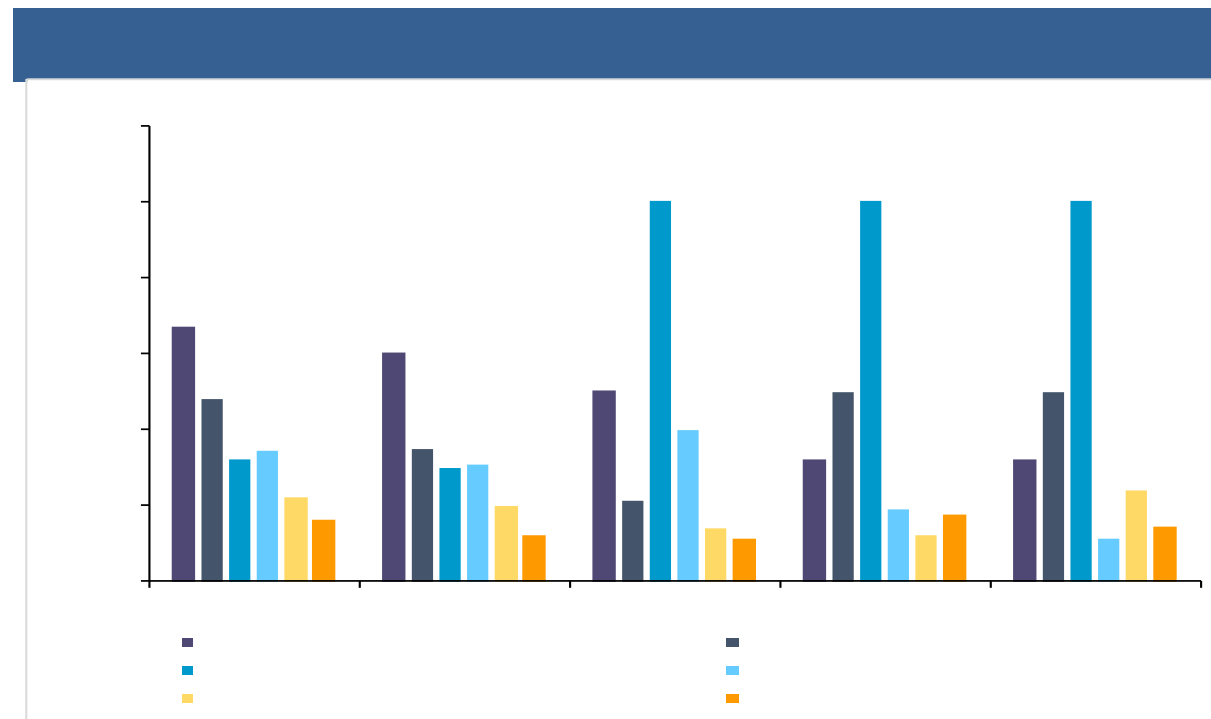
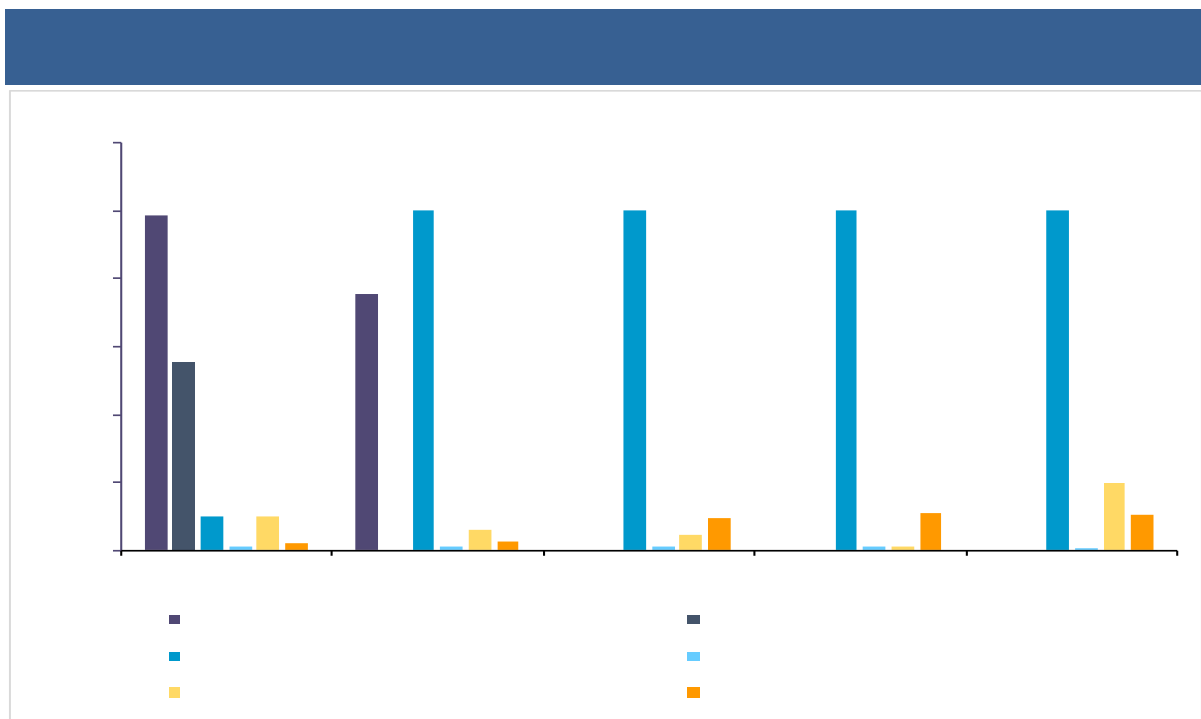


2022/5/26

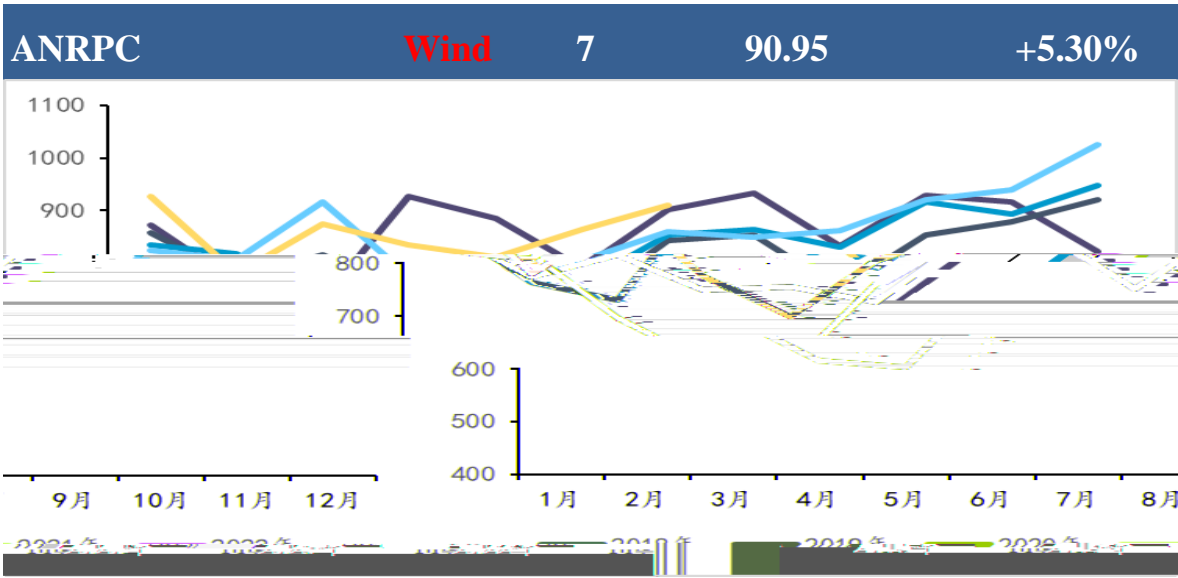
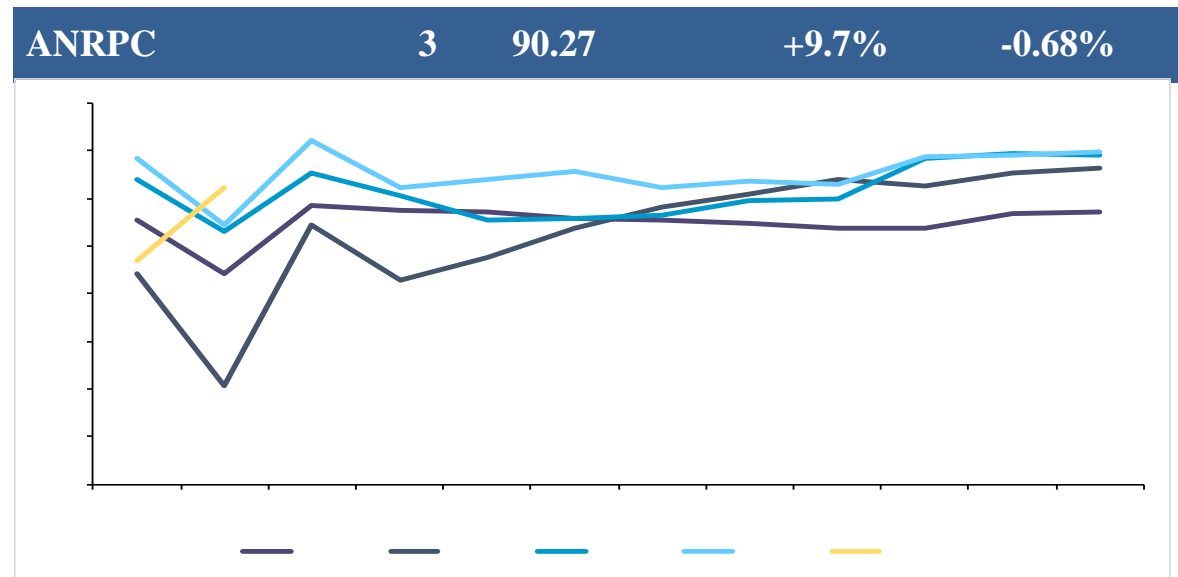
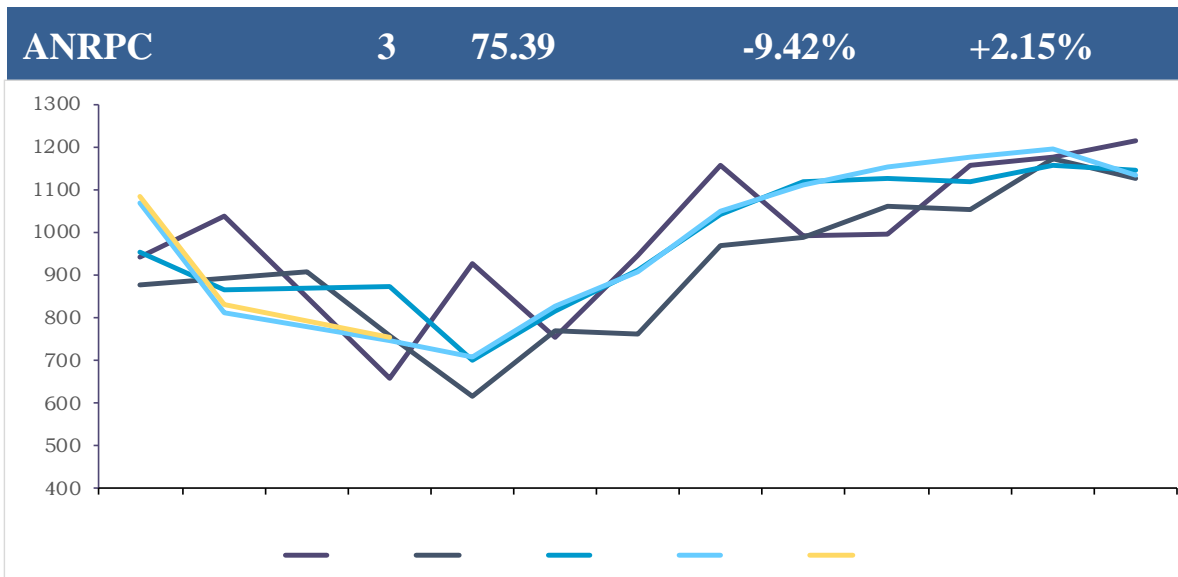
11875 / -2.78%



ifind



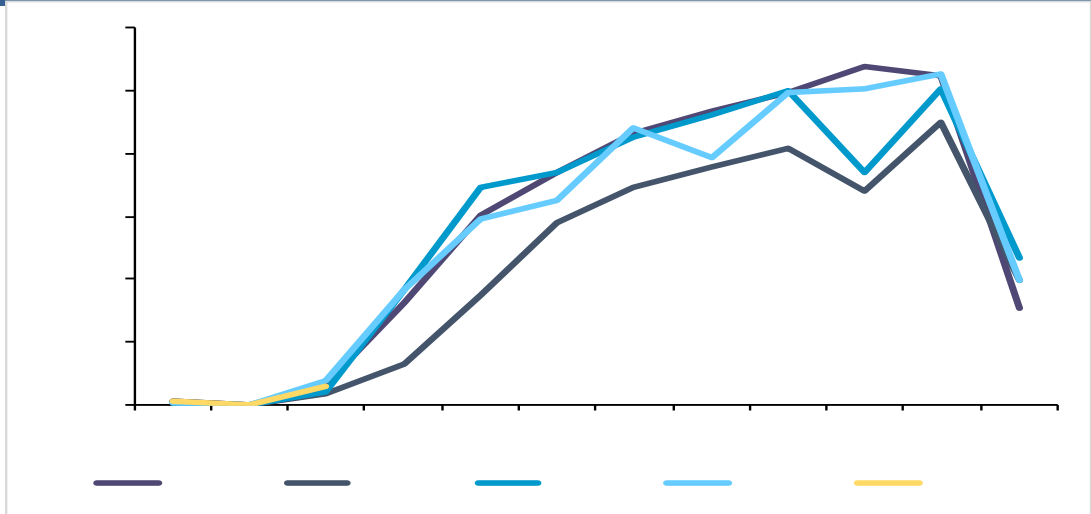
	2023	6.5	+16%	60%	10%	1
2023	2023	6.5	+16%	60%	10%	1
2023	2023	11.56	+0.35%	-42%		1.2



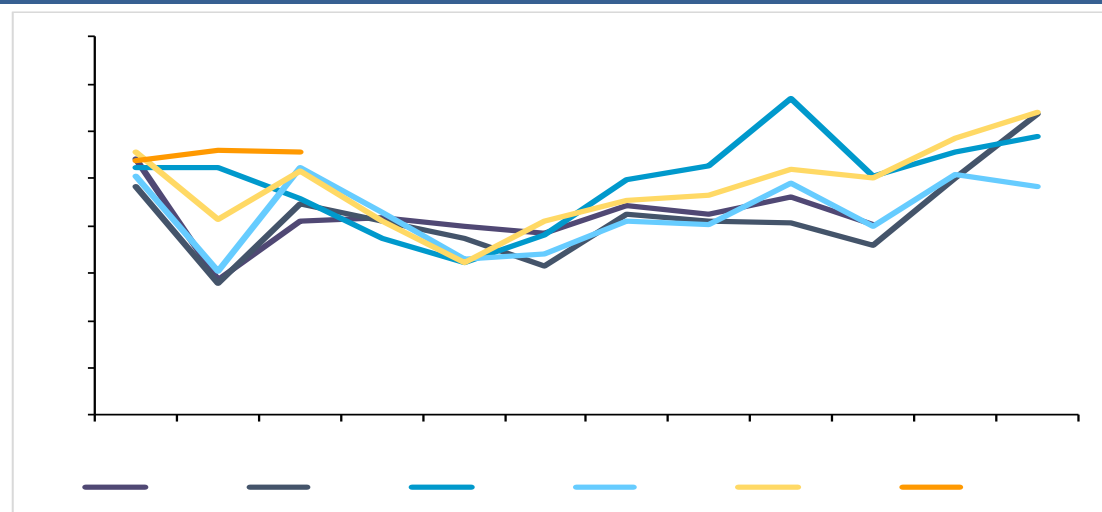
ANRPC () 11

✓	ANRPC	2023	3	75.39	-9.42%	+2.15%	1-3	268.54	+2.82%
✓	ANRPC	2023	3	90.27	+9.72%	-0.68%	1-3	238.69	-5.98%
✓	ANRPC	2022	1-7	600.41	+5.51%	7	90.95	+5.30%	+5.84%

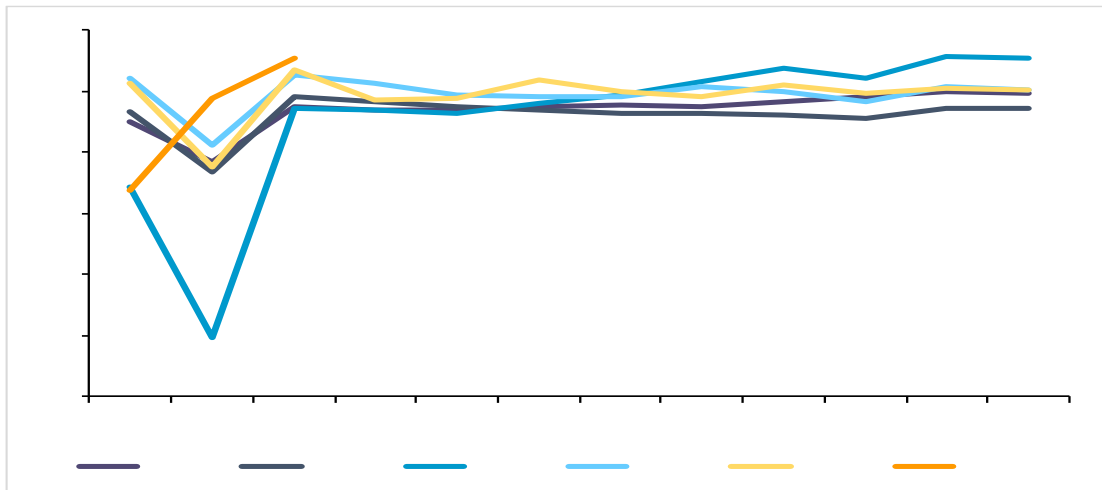
3 7500



3 4300 +194.44% +89.29%



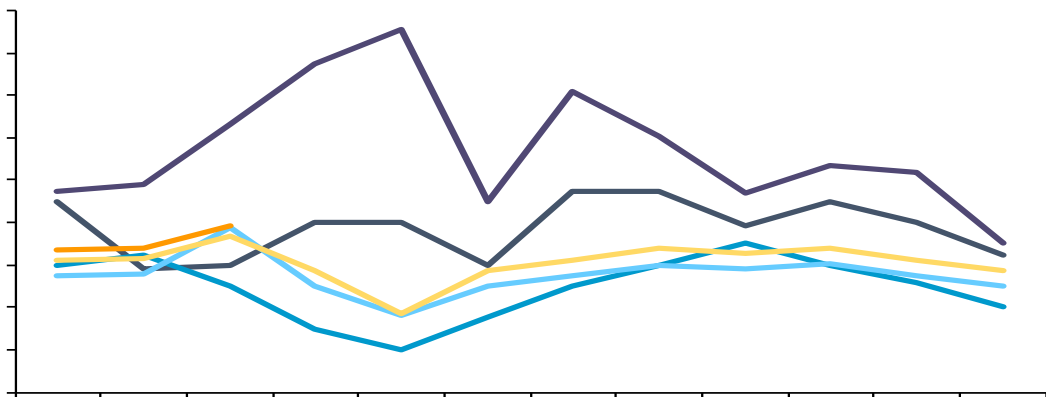
3 55.3 +13.09% +3.46%



✓		2023 3	7500		
✓	+13.09%	2023 3	55.3	137.9	
		+3.46%	1-3		
	-3.13%				
✓	40.28%	2023 3	4300	-18.87%	-

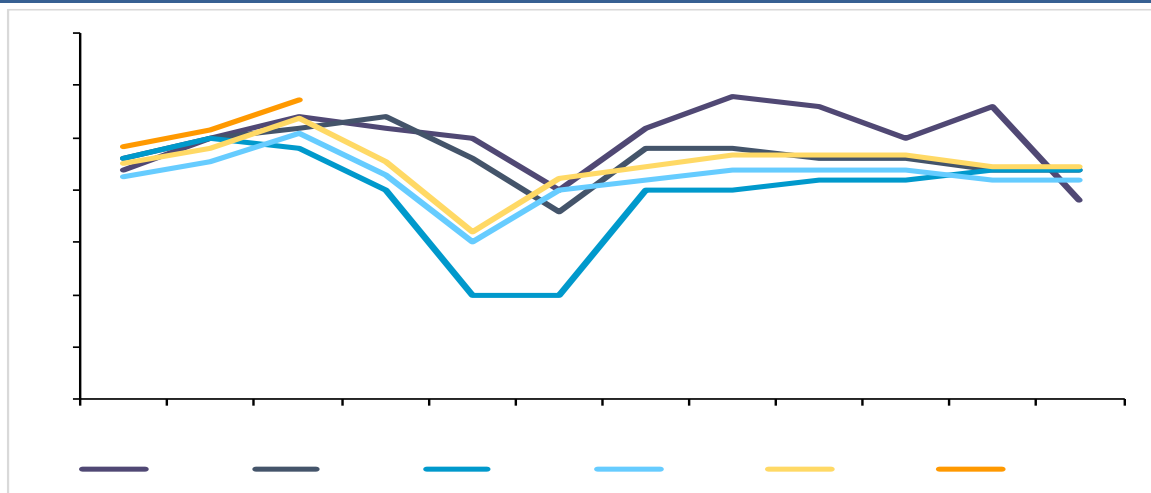


3 27.84 +1.79% +4.00%



3 19 -1.86% +15.15%

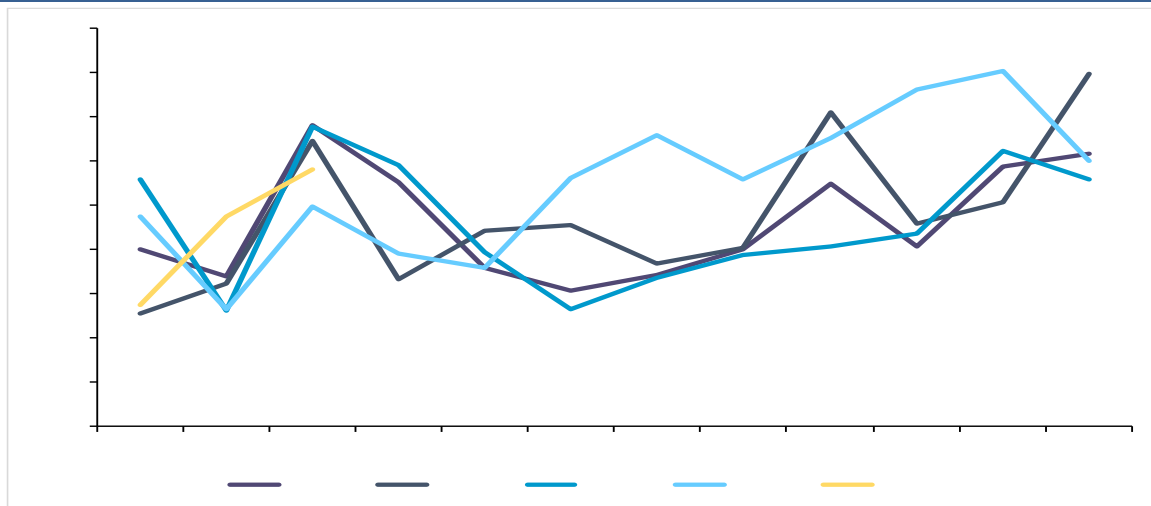
3 5.87 +3.16% +5.39%



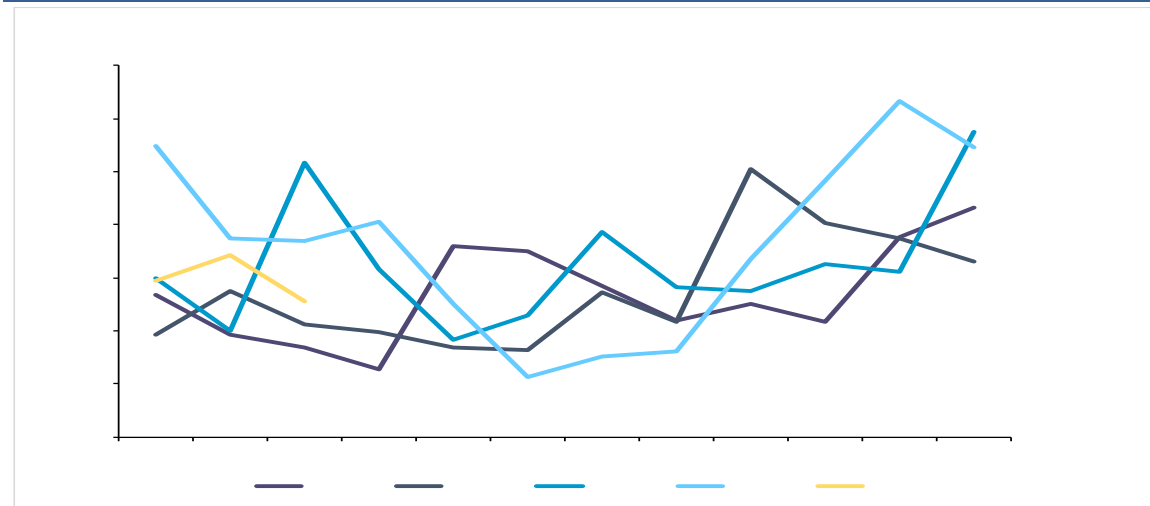
ifind

✓		2023	3	27.84	+1.79%
	+4.00%	1-3	81.33	+1.79%	
✓		2023	3	5.87	+3.16%
	+5.39%	1-3	16.86	+3.12%	
✓		2023	3	19	-1.86%
	+15.15%	1-3	35.5	+0.65%	

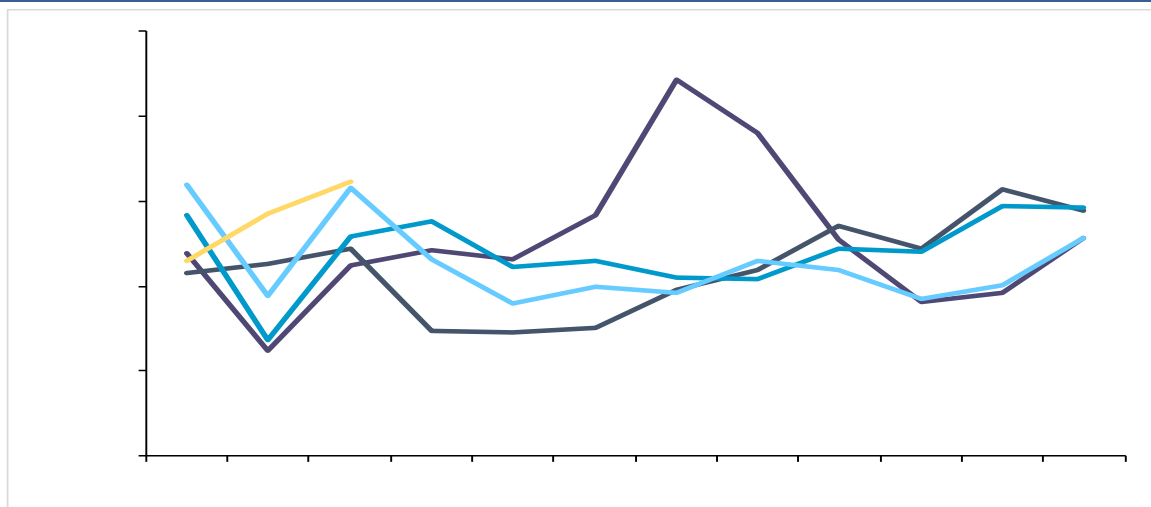
2023 1-3 13.31 +7.56%



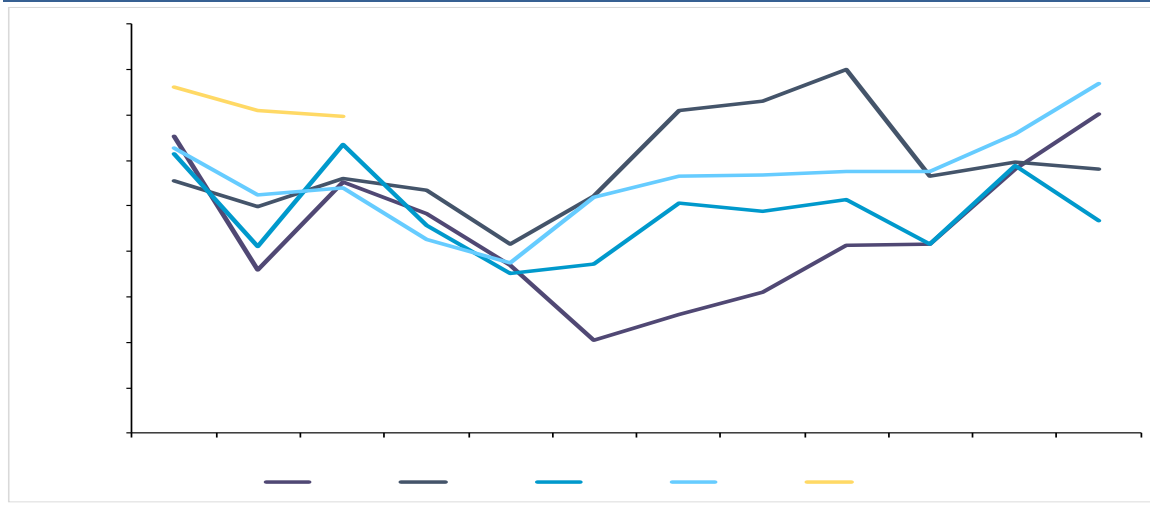
2023 1-3 4.45 -31.08%



2023 1-3 41.95 +2%



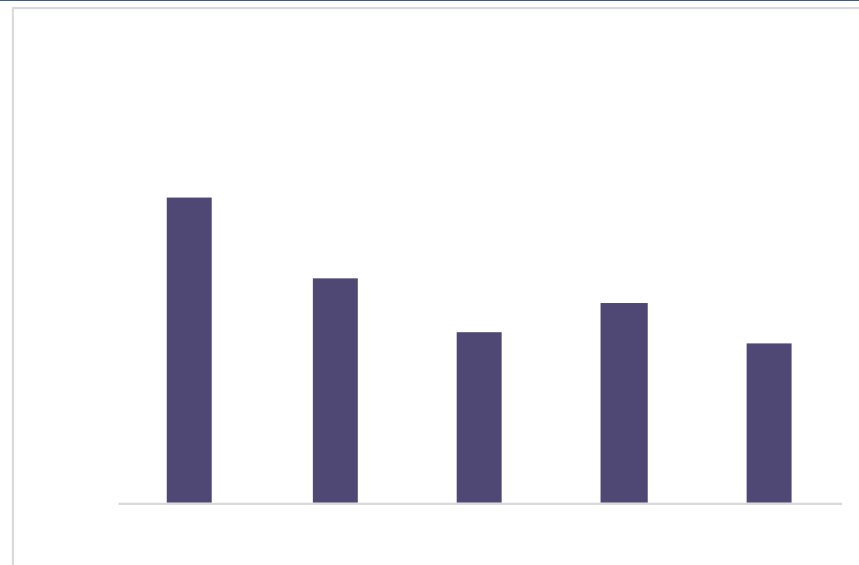
2023 1-3 108.35 +28%



2023 1-3

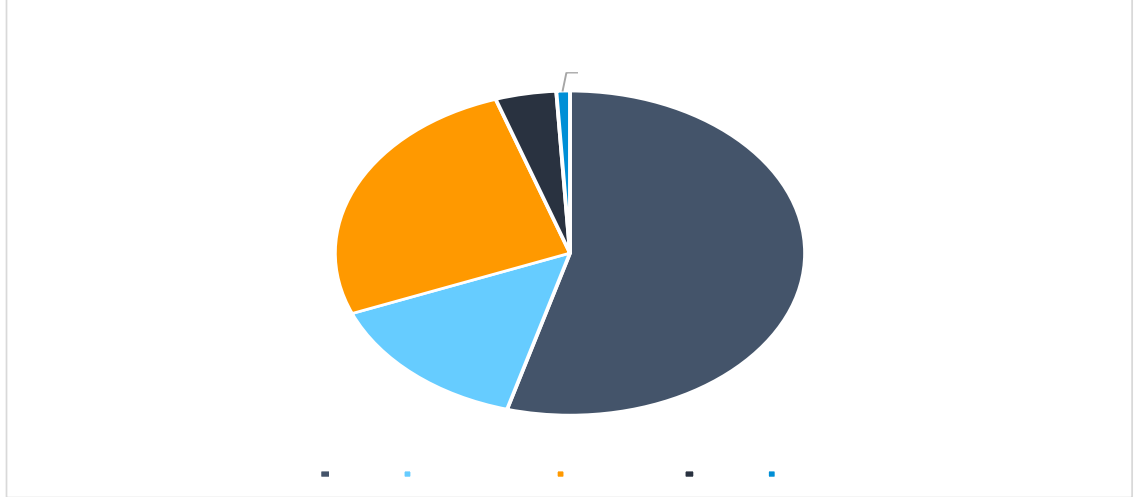
9100

-33.99%

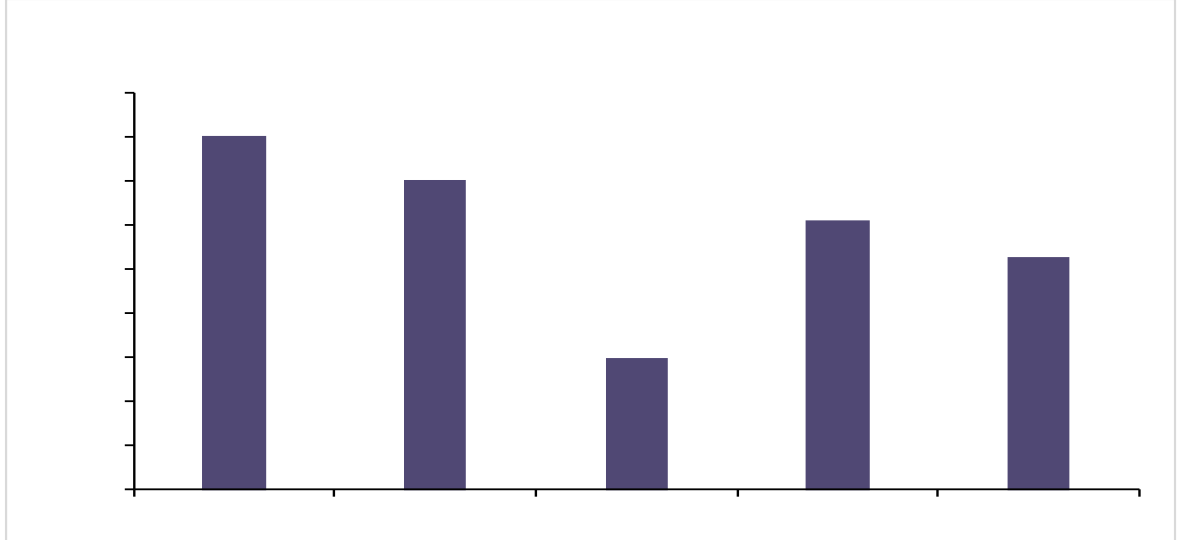


✓	2022	1-12			105.47
✓		1-12	57.28	27.40	15.40
			4.42	9800	
✓			54.31%	25.97%	14.60%
			0.93%		4.19%

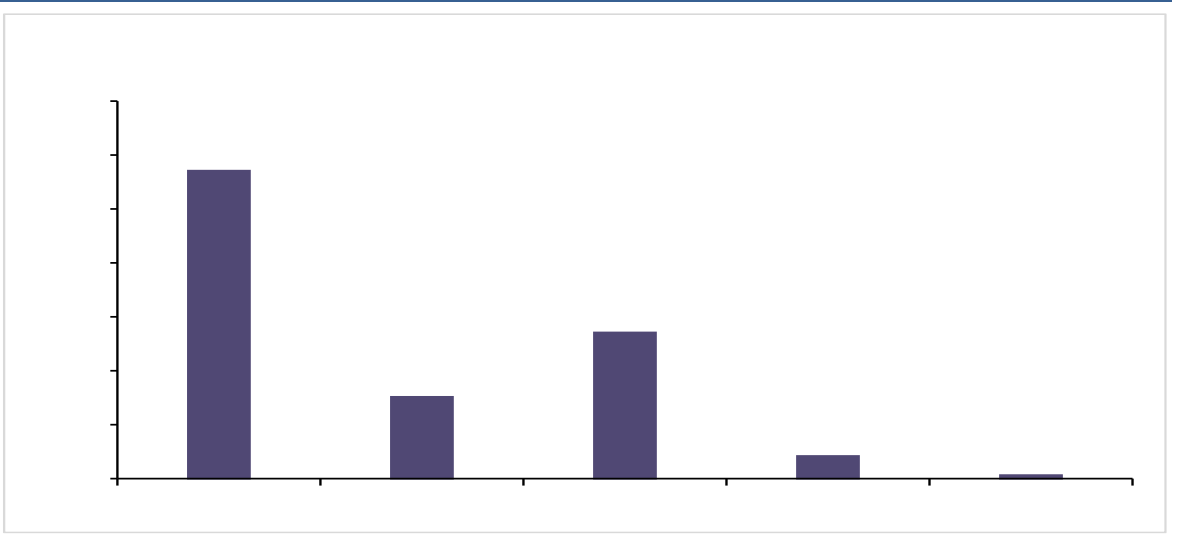
TSNR



2022

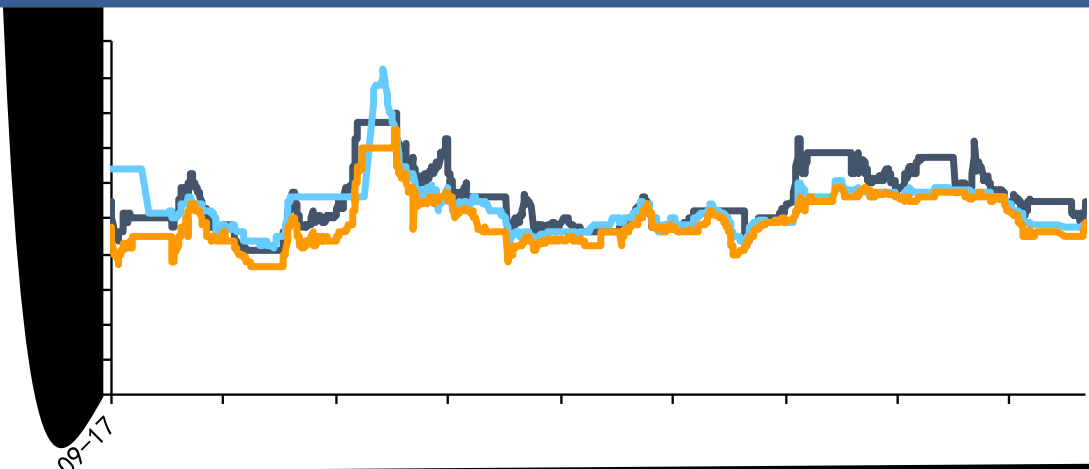


2022



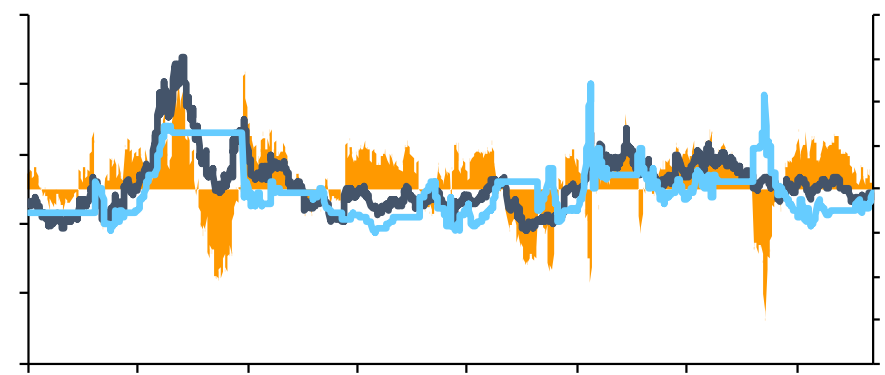
✓ 5 23 11000 / +6.80%
✓ 5 23 -225 /

Blue header bar for the left chart.

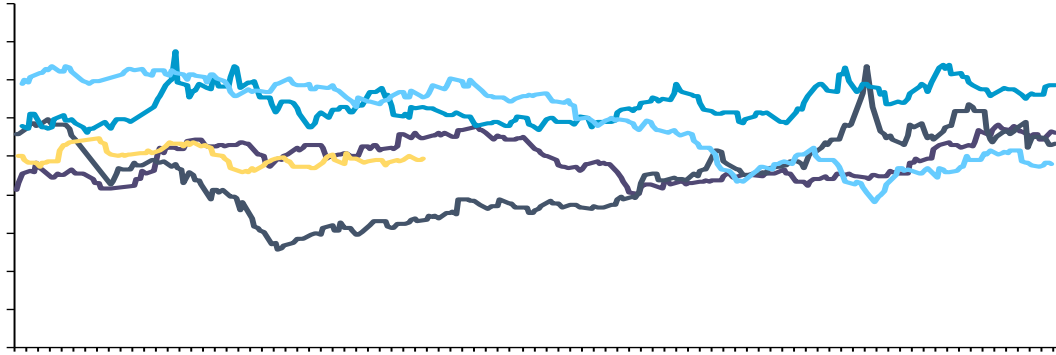


2014-09-17

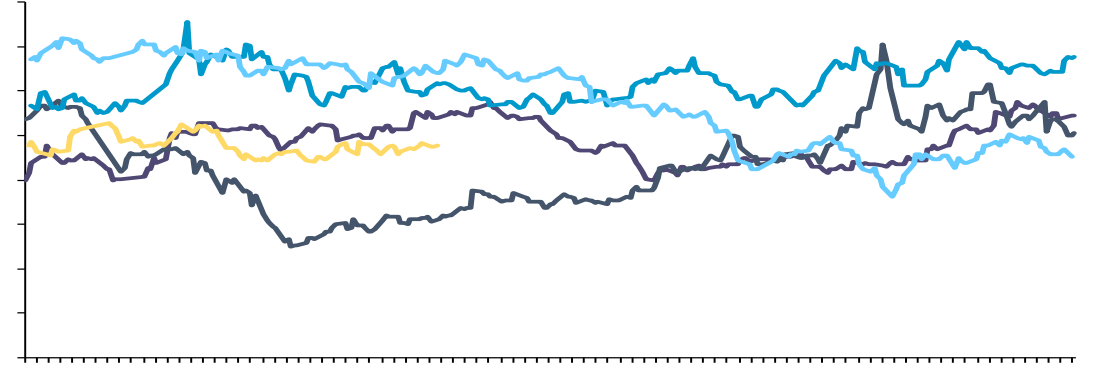
RU - Blue header bar for the right chart.



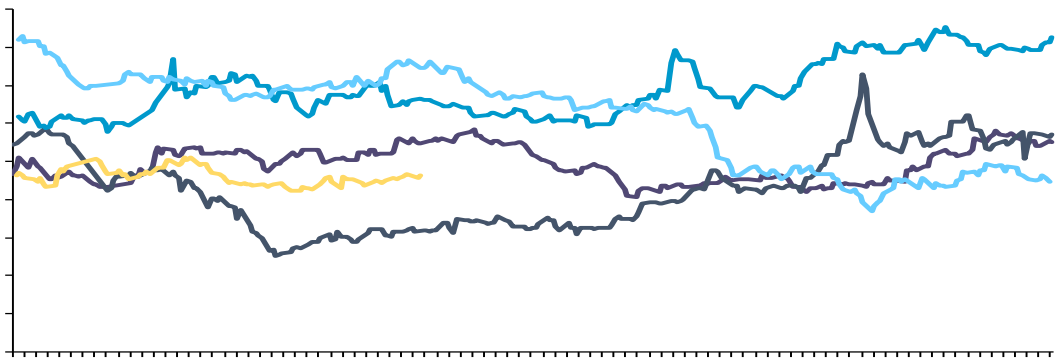
20



20

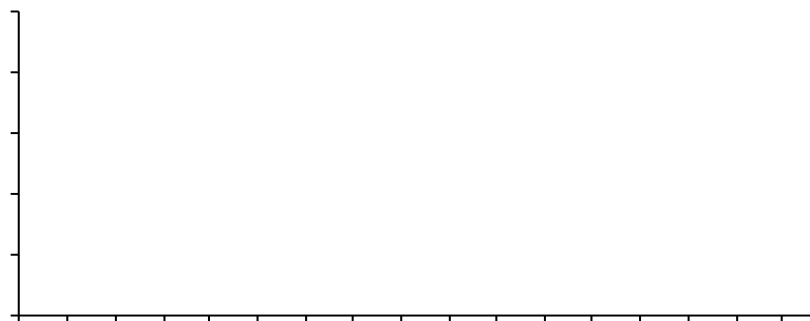


20



ifind

✓	5	24	20		12937.32 /
				+0.09%	
✓	5	24	20		12618.39 /
				+0.37%	
✓	5	24	20		12777.86 /
				+0.38%	

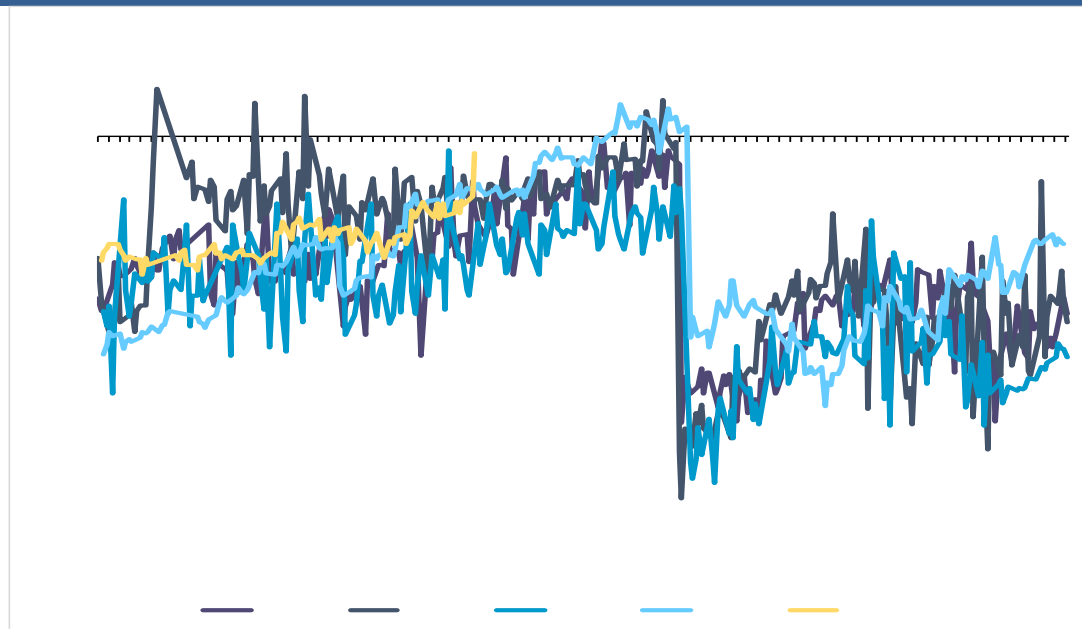


ifind

✓ 2023 5 23
-1.84%

11900 13650 11975 /

-0.36%



ifind

✓ 2023 5 23

-75 /

RU

✓

2023





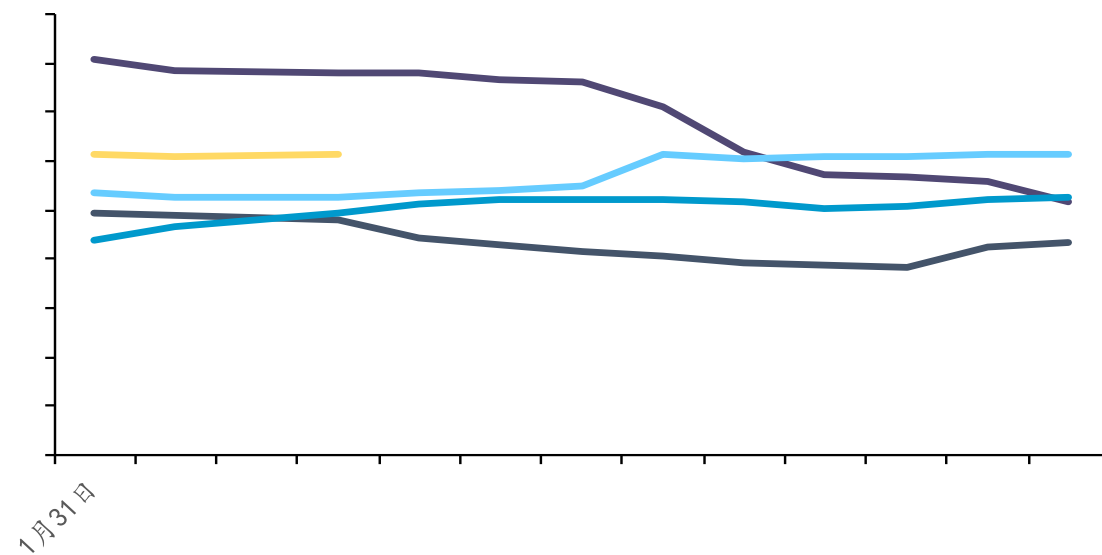
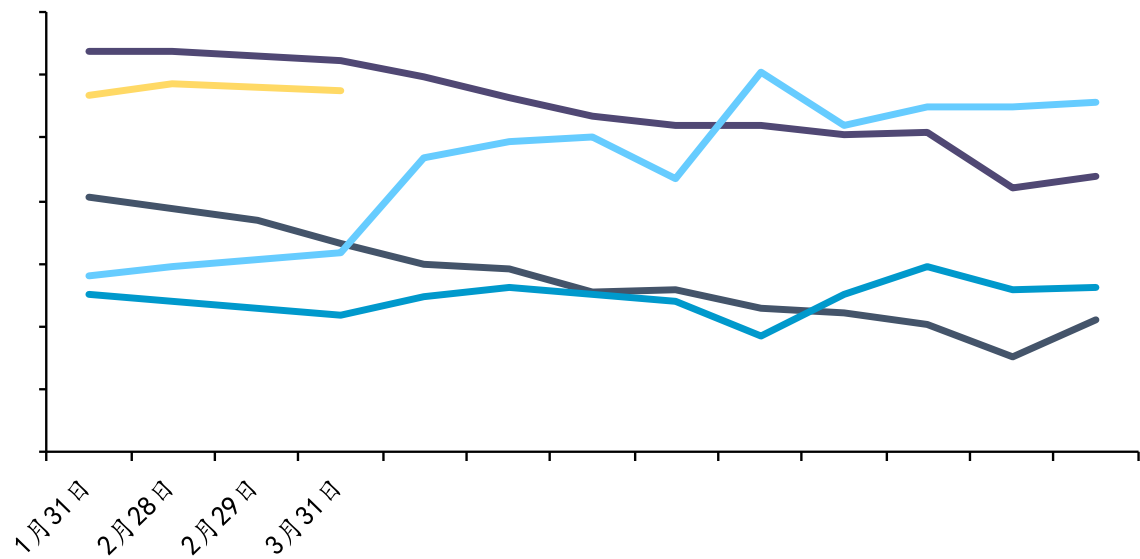
✓ 5 19

64.68%

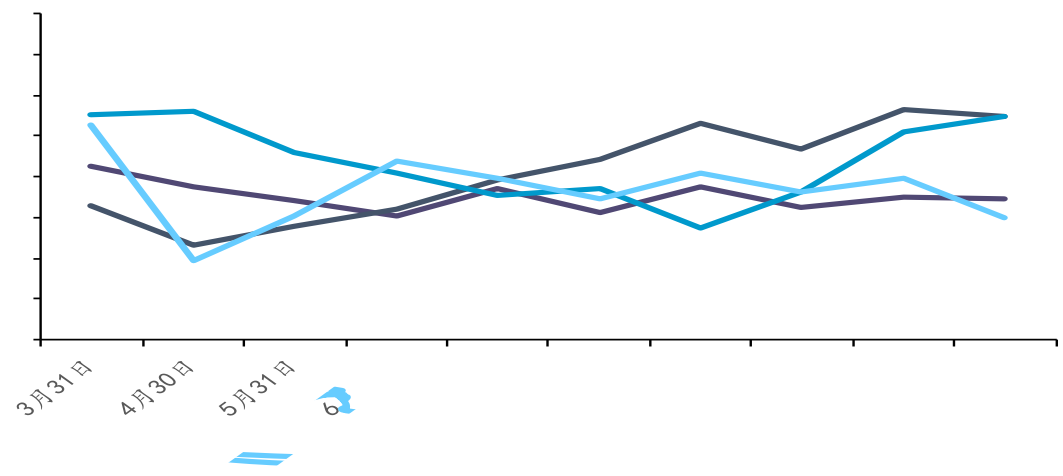
+0.43%



✓ 4	503.59 /	101.23
✓ 4	1312 /	100.43
✓		



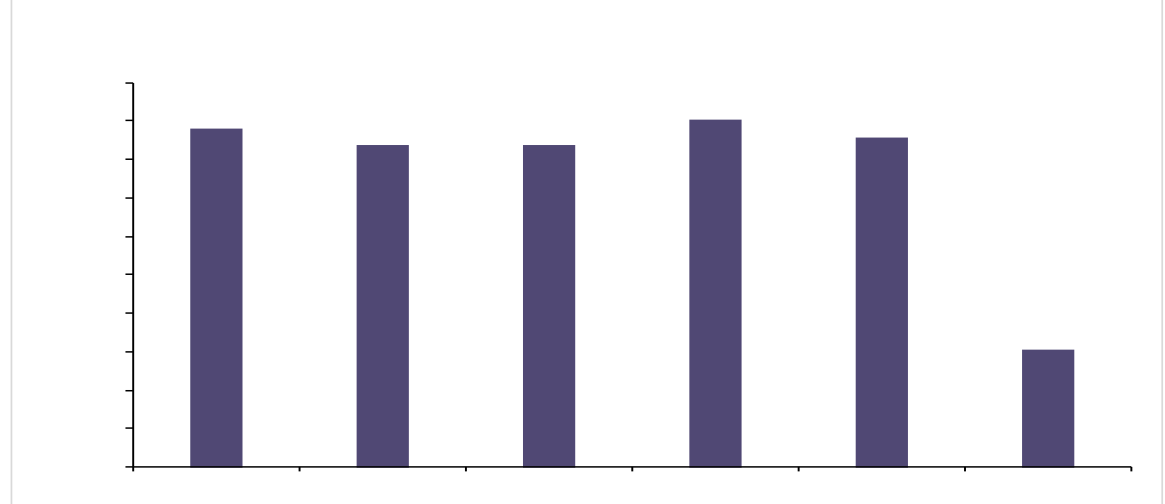
4 **8526.90** **+31.78%**



2023 1-4 **30526.9** **+13%**

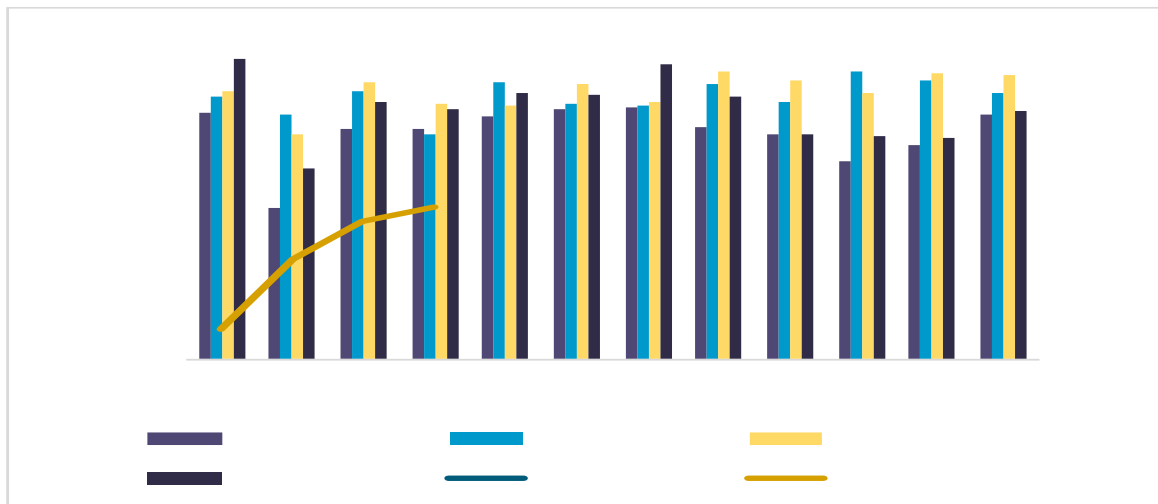


2022 **85781.8**

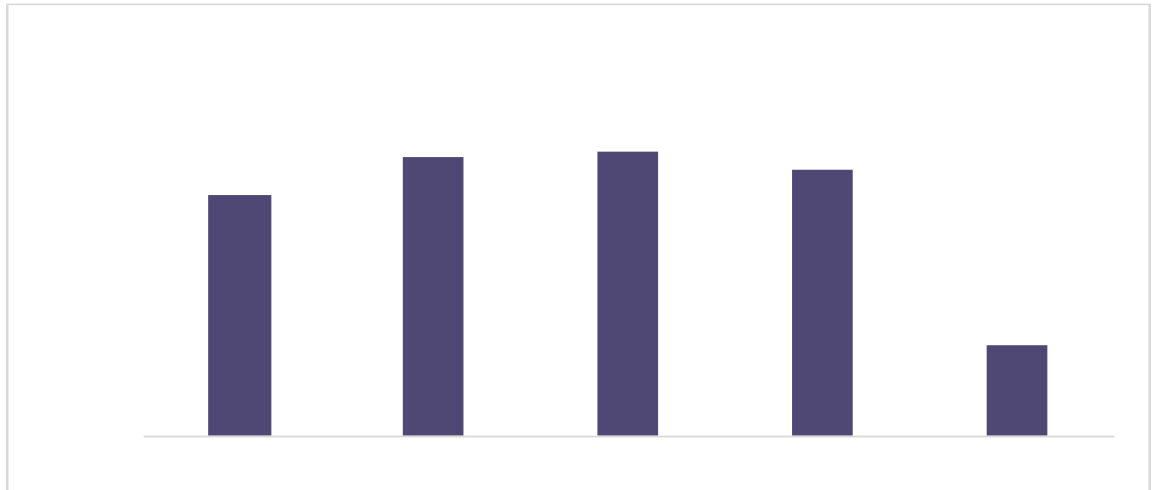


- ✓ 4 8526.90 +31.78%
- ✓ 2023 1-4 30526.9 +13%
- ✓

4 5070 -4.30% +9.79%

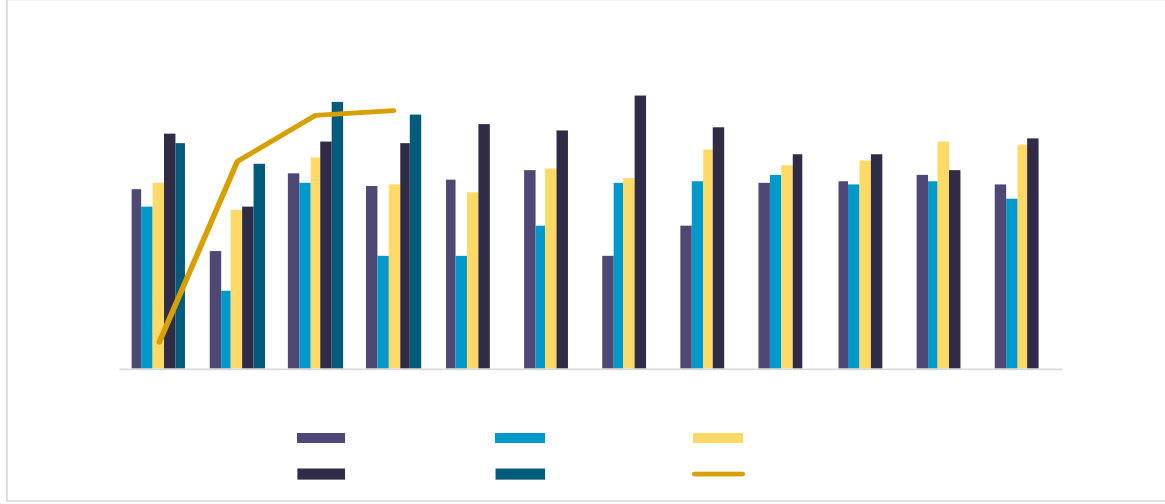


1-4 18977 +3.24%



ifind

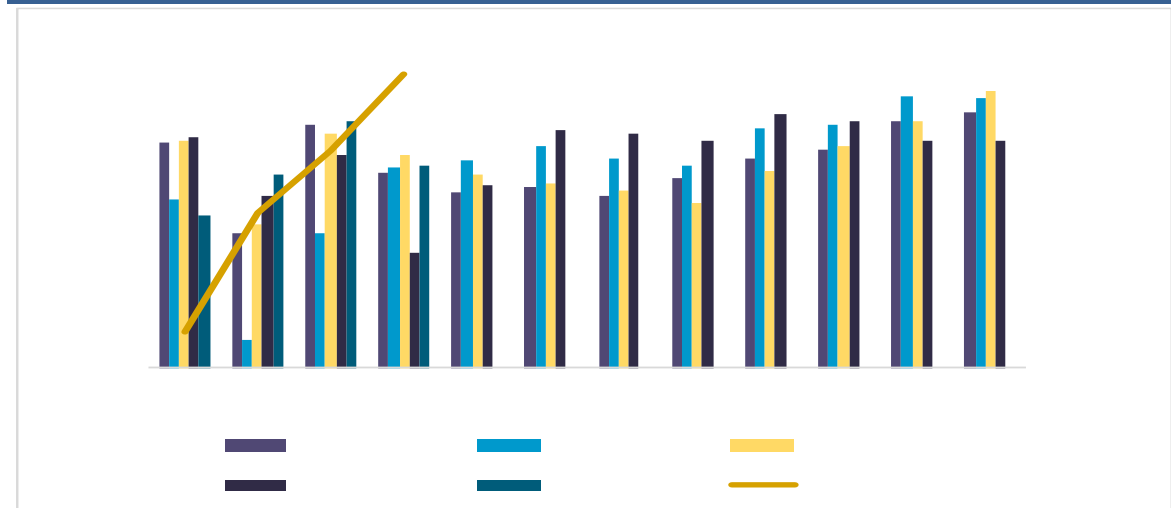
1-4 66.46 +12.07%



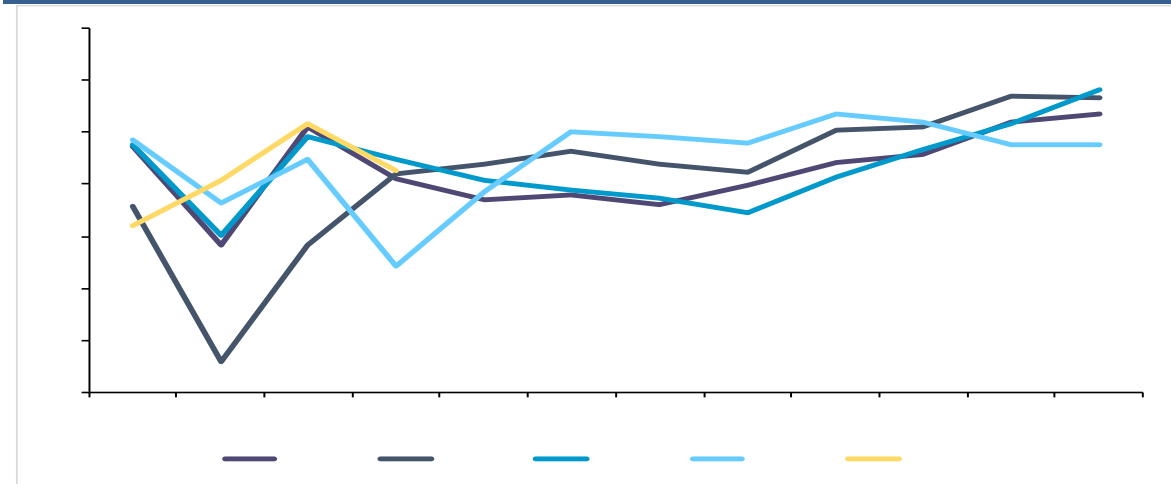
✓ 4	5070	-4.30%
		+9.79%
✓ 1-4	18977	+3.24%
✓ 1-4	66.46	+12.07%
✓		



4 215.90 -11.91% +82.83%



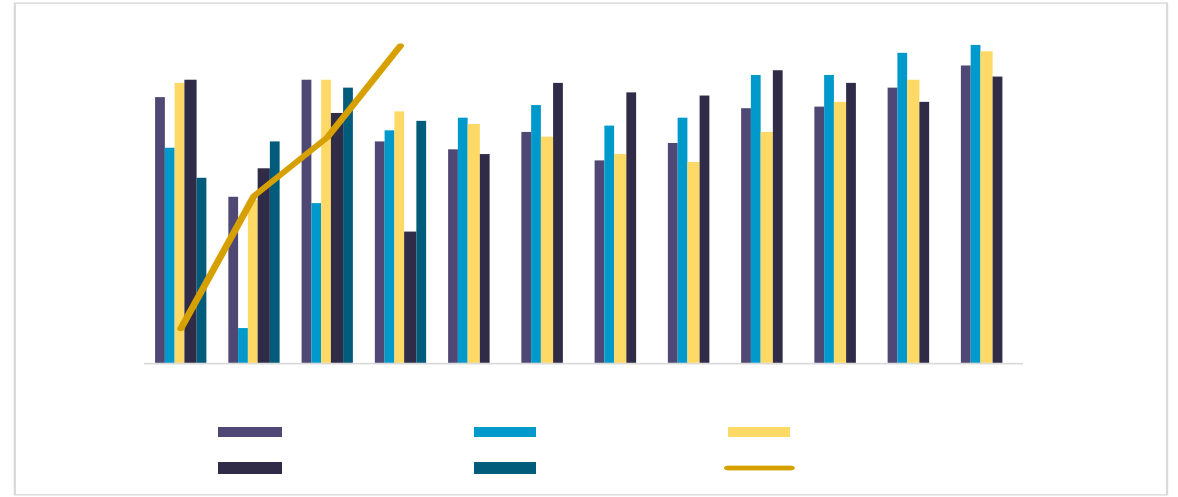
2023 1-3 621 -4.12%



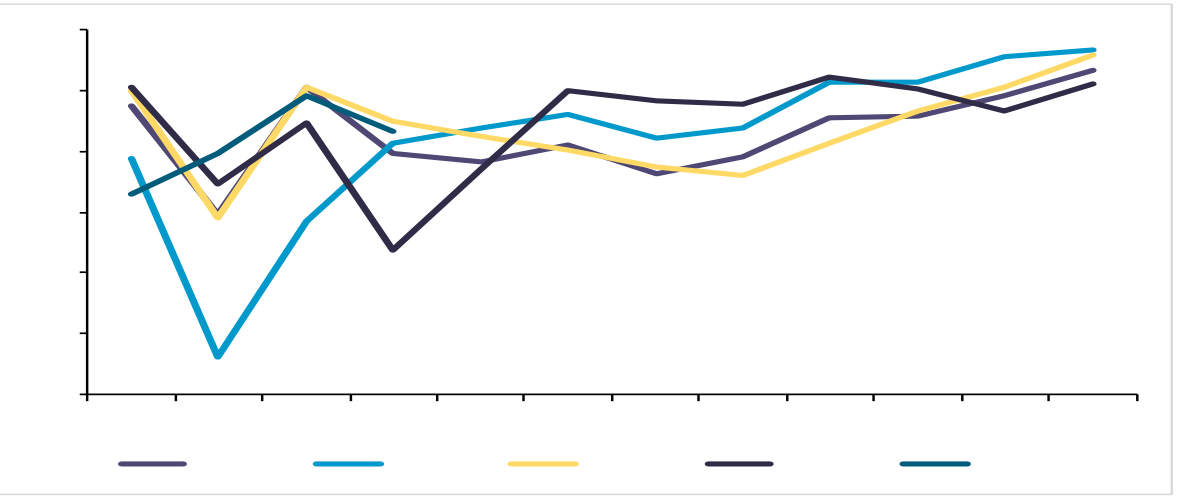
ifind

✓	2023	1-4	834.30	+8.60%	4
			215.90	-11.91%	+82.83%
✓	3			"	"
	3	4		60%	
	4				

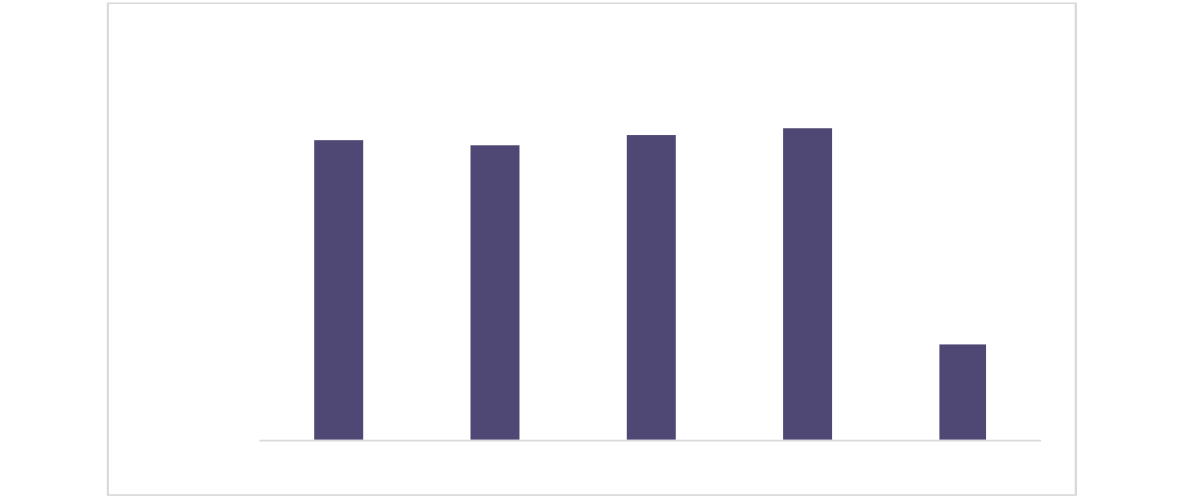
4 215.90 -11.91% +82.83%



Legend: Purple bar, Cyan bar, Yellow bar, Black bar

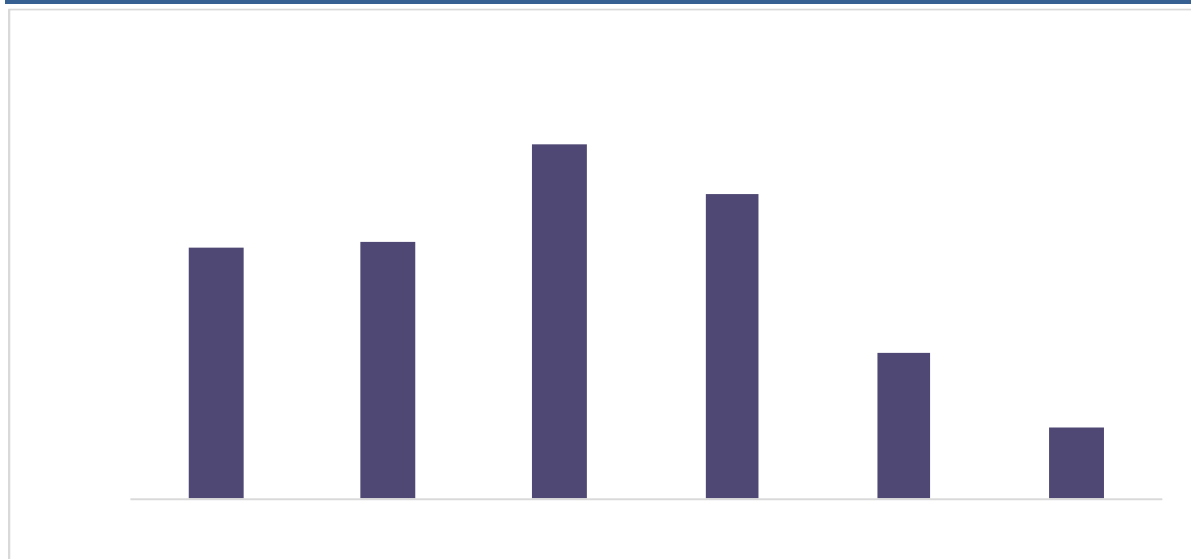


2023 1-4 823.50 +7.19%

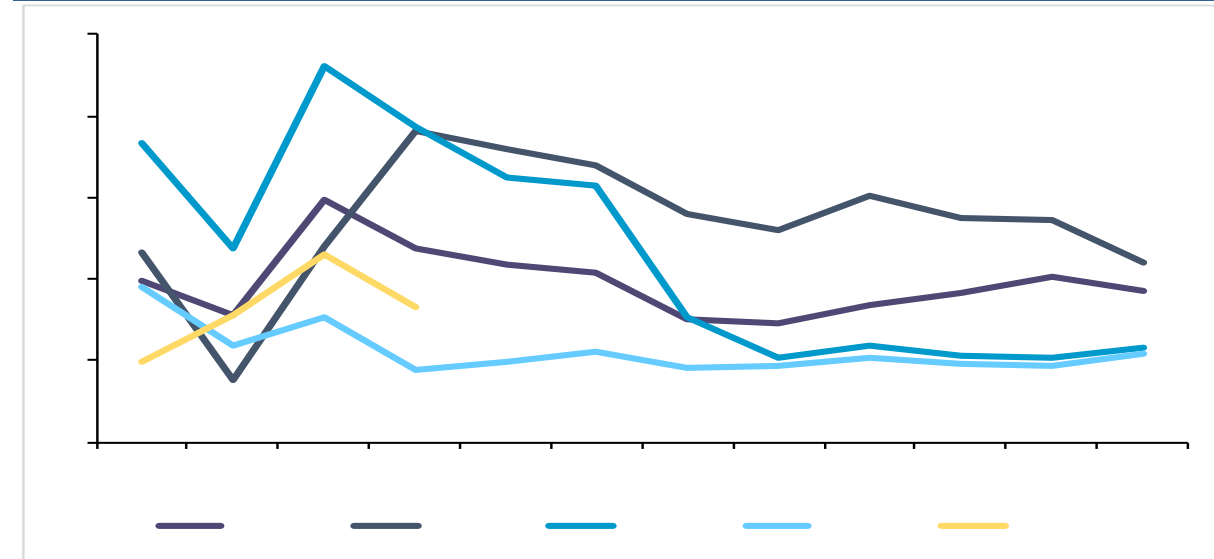


✓	4	215.90	-11.91%	+82.83%
✓	2023 1-4	823.50		+7.19%
✓				
		5		
		"	"	

2022 67.11 -51.84%



4 8.31 -27.99% +88.86%



ifind

✓ 4 8.31 -27.99% +88.86% 2

21

1-3

34%

✓

2022

021-68905325	0571-89809624	028-83279757	021-50568018
12 15 03 69 1	111 2 1301	12 6 802 4	899 1201-1202
0757-88772666	0755-83533302	0757-88772888	0769-22900598
28 2 2301 2302	A 704A 705		1501B 2
020-31953184	0763-3808515	0758-2270761	020-61887585
			8 803B 171
010-63360528	027-59219121	0531-66671202	0371-86533821
	A 14 1401-9 193		80 1 2 23 2301
0532-88697833	020-22836158	020-22836155	020-22836182



广州期货股份有限公司

www.gzf2010.com.cn

1

5/6

30