

2012 1497

20230619

2312

020-22139813

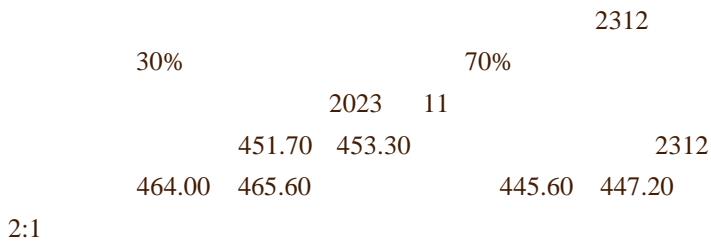
F03086605

Z0016791

li.dai@gzf2010.com.cn

F03087862

tang.shubin@gzf2010.com.cn



AU2312

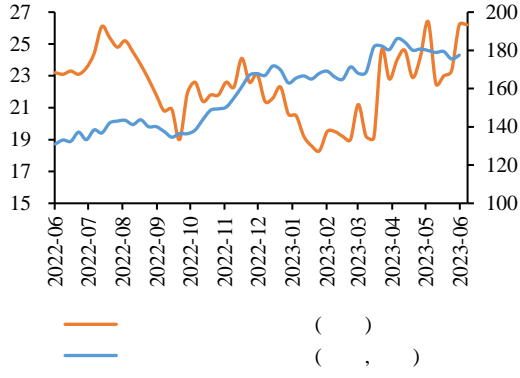


.....	1
.....	4
.....	4
.....	4
.....	4
.....	4
.....	4
.....	4
.....	5
.....	5
.....	6

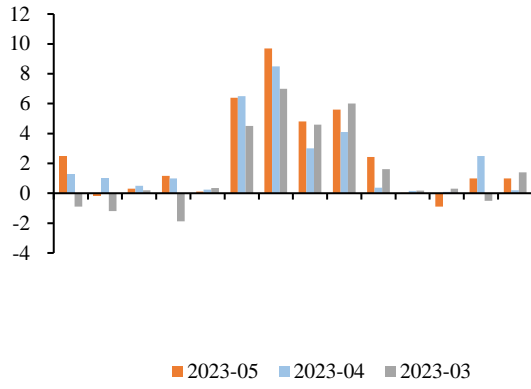
			5	ISM	46.9	7
				42.6		
	50		51.1	51.4		
				44.2		
						37.5
			43.5	14		45.8
		51.4				
	5	ISM		50.3	2023	
		51.5			52.9	
40.9				56.2		
		49.2				
	58.3		61			
			5		33.9	
	5					
			5		9.7	8.5
	5	6.4		6.5		5
5.6	4.1	5		3.7%		0.3
		62.6%				
	33.44			4.3%		0.3%
		6	10		26.2	6
	3		2021	10		
	TGA					6
	TGA	5500	6	14	1348.57	
		4780		2480		5740
	1590					
	6-9			14590		



12

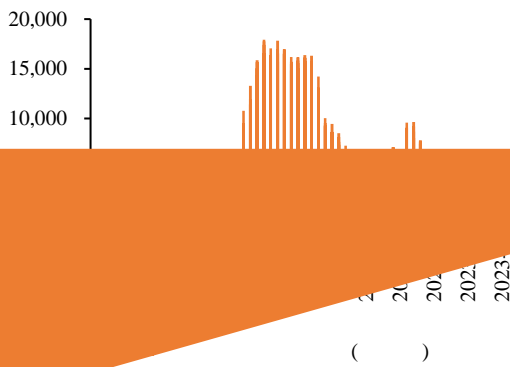


13

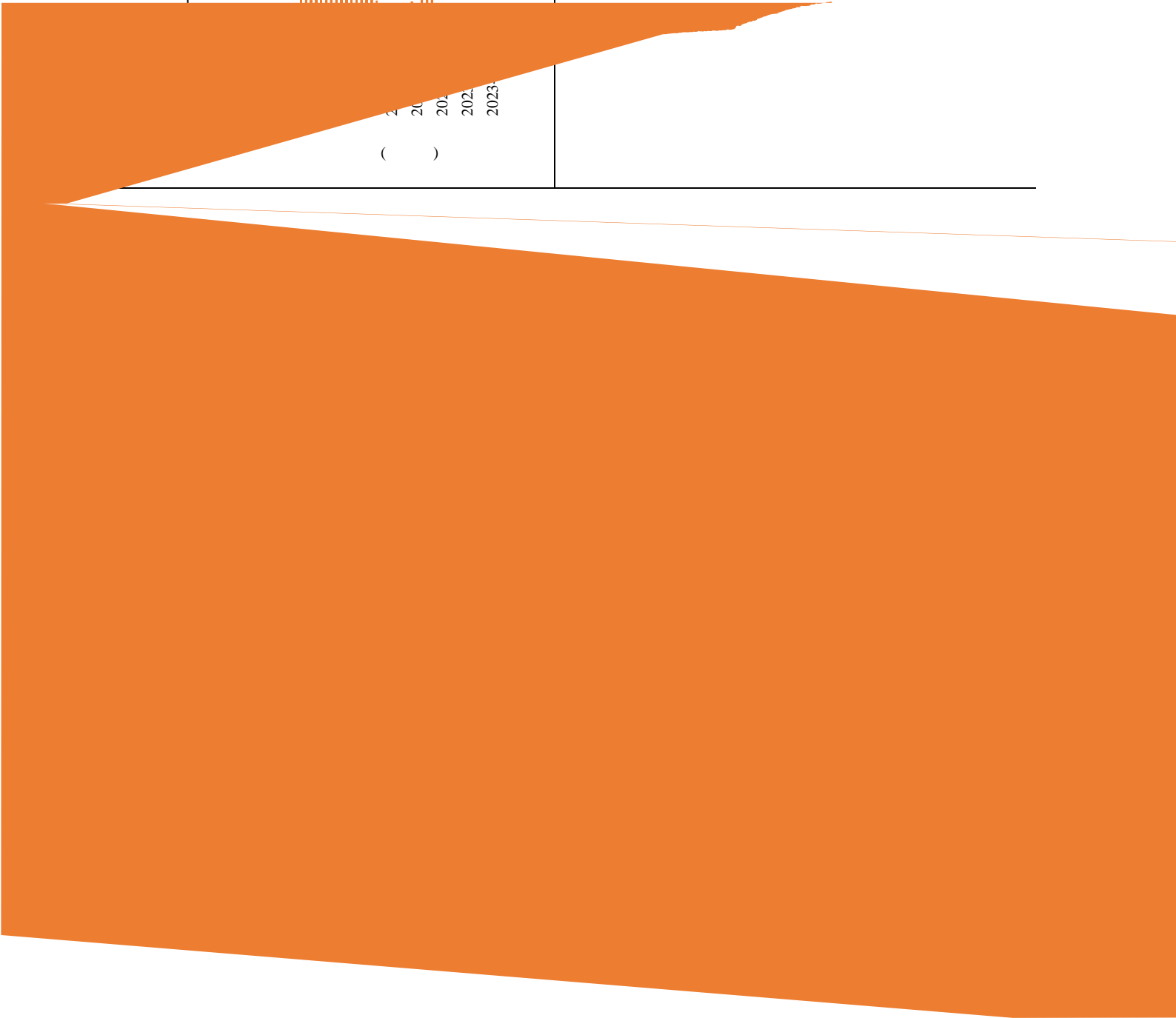


14

TGA



14



/

020 22836116
020 22836104
020 22836105

020 22836117
020 22836114

1

6

510627

0338		0225		8338		0225	
0196							
<hr/>							
021-68905325	0571-89809624	028-83279757	021-50568018				
69 1 12 15 03	111 2 1301	4 12 6 802	899		1201-1202		
<hr/>							
0757-88772666	0755-83533302	0757-88772888	0769-22900598				
28 2 2301 2302	A 704A 705	57 2 3006	2		1501B		
<hr/>							
020-31953184	0763-3808515	0758-2270761	020-61887585				
105 2 1306	25 2 04	2	171		803B		
<hr/>							
010-63360528	027-59219121	0531-66671202	0371-86533821				
24 1 -5 32 101 12 1211	193 A 14 1401-9	8 B 906	80		1 2 23 2301		
<hr/>							
0532-88697833	020-22836158	020-22836155	020-22836182				
100	1 6	1 6	1 6		905		
<hr/>							
020-22836185	021-50390265	388 701					
1 6							