

7 PMI



7 PMI



7 PMI



7



7



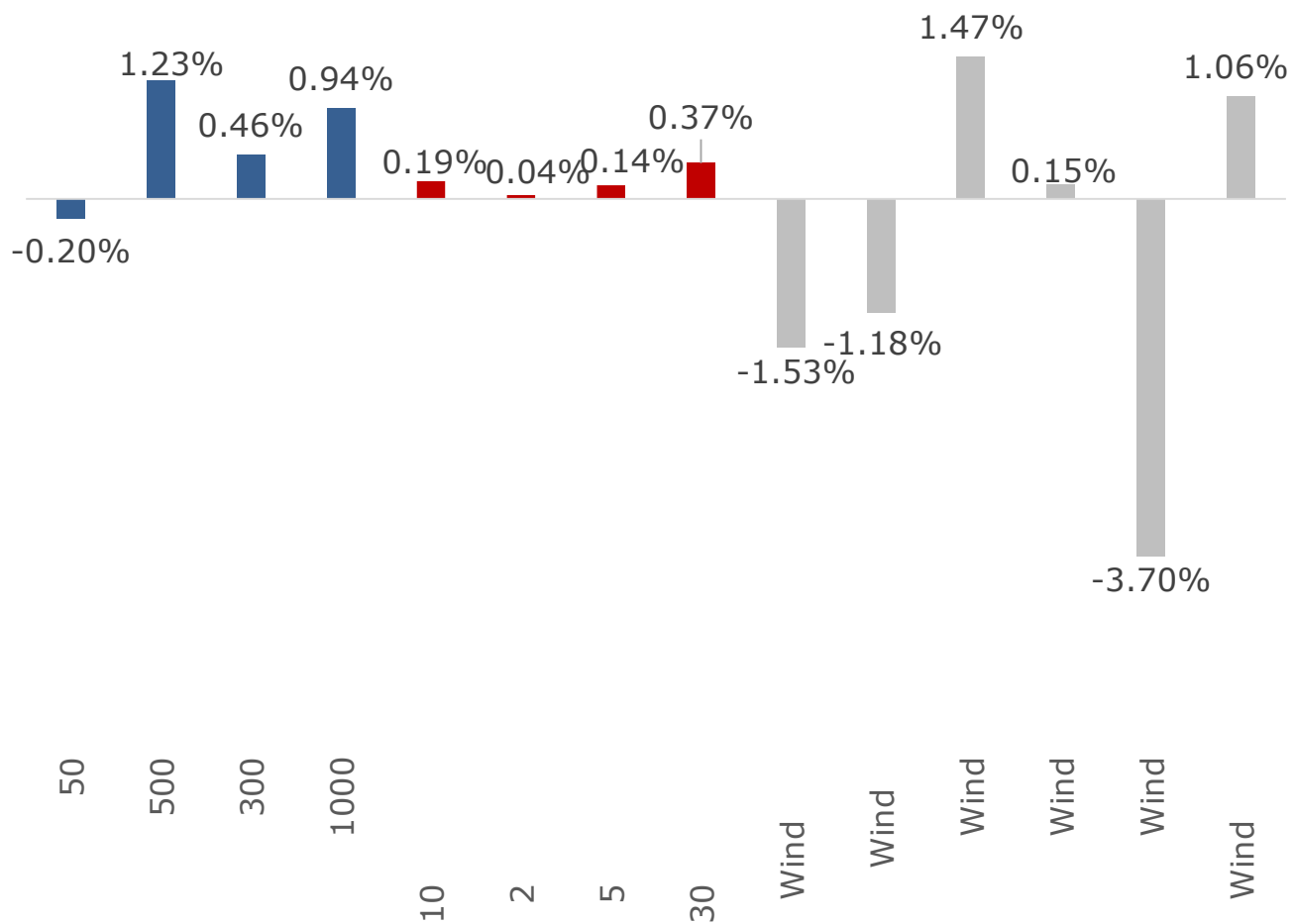
7

7





7 31 -8 4



■ 7 PMI

■

■

■

■

7

PMI

ADP

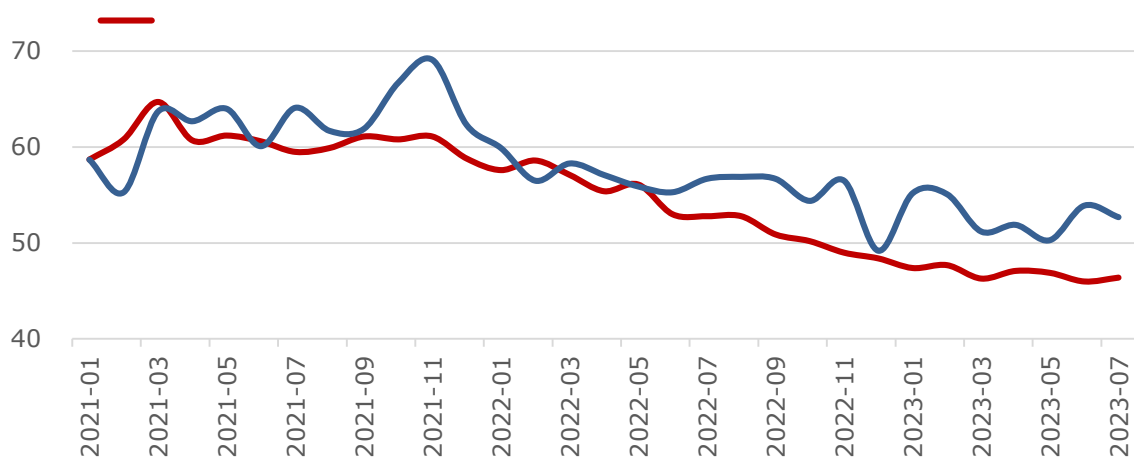


6 7 ADP 32.4

PMI 11

PMI

7 ADP



■ 5 " " 8 1 AAA
 AA+ 2023 2024

■

ADP

8 7				8 11	8 12	8 13
	➤	➤	➤			
			➤ 7 CPI	➤		

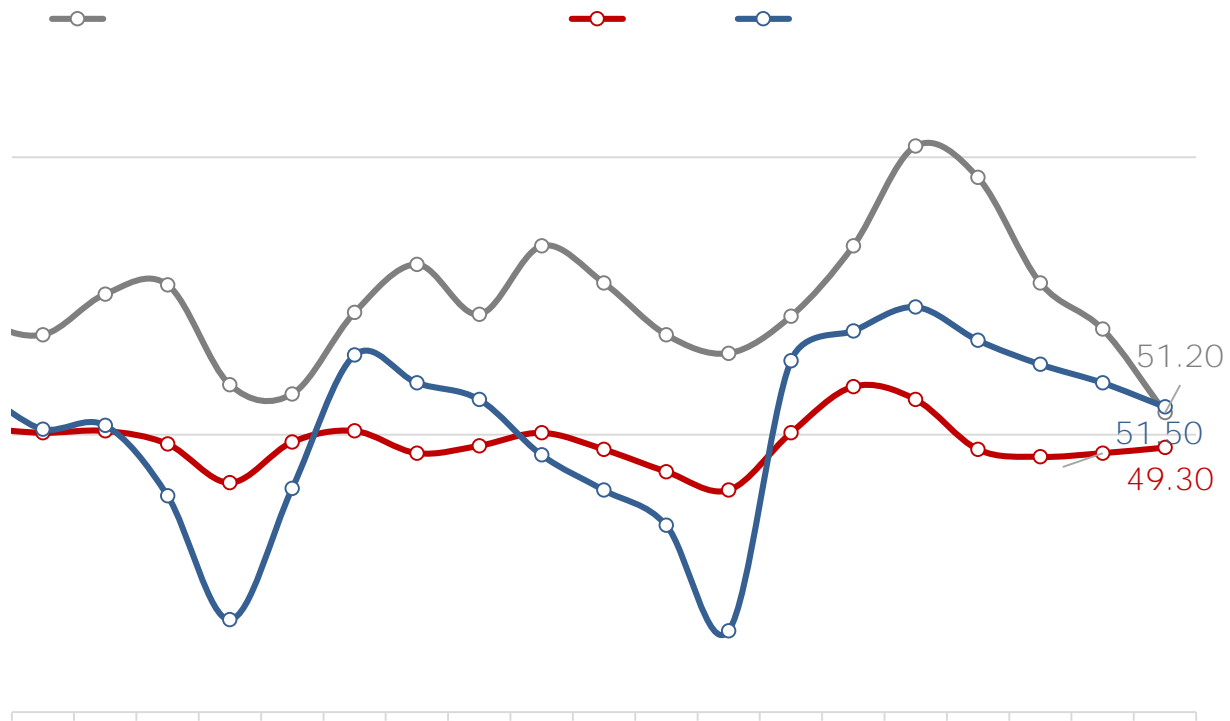
7 PMI



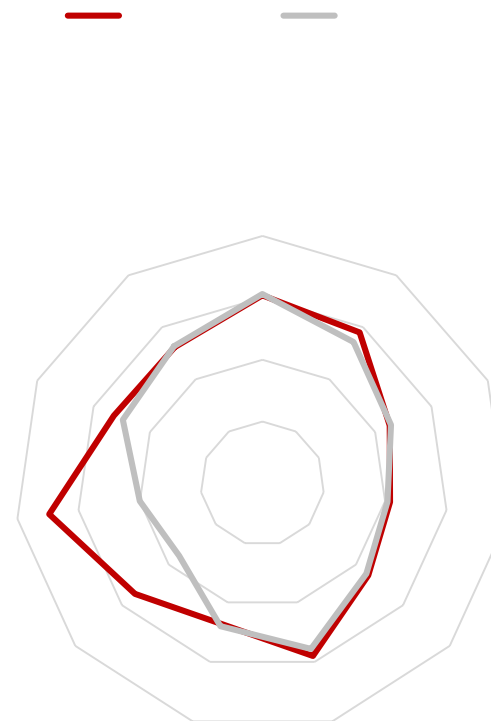
7 PMI

7 PMI PMI

7	PMI	49%	49.3%
	PMI	4.5	51.2%

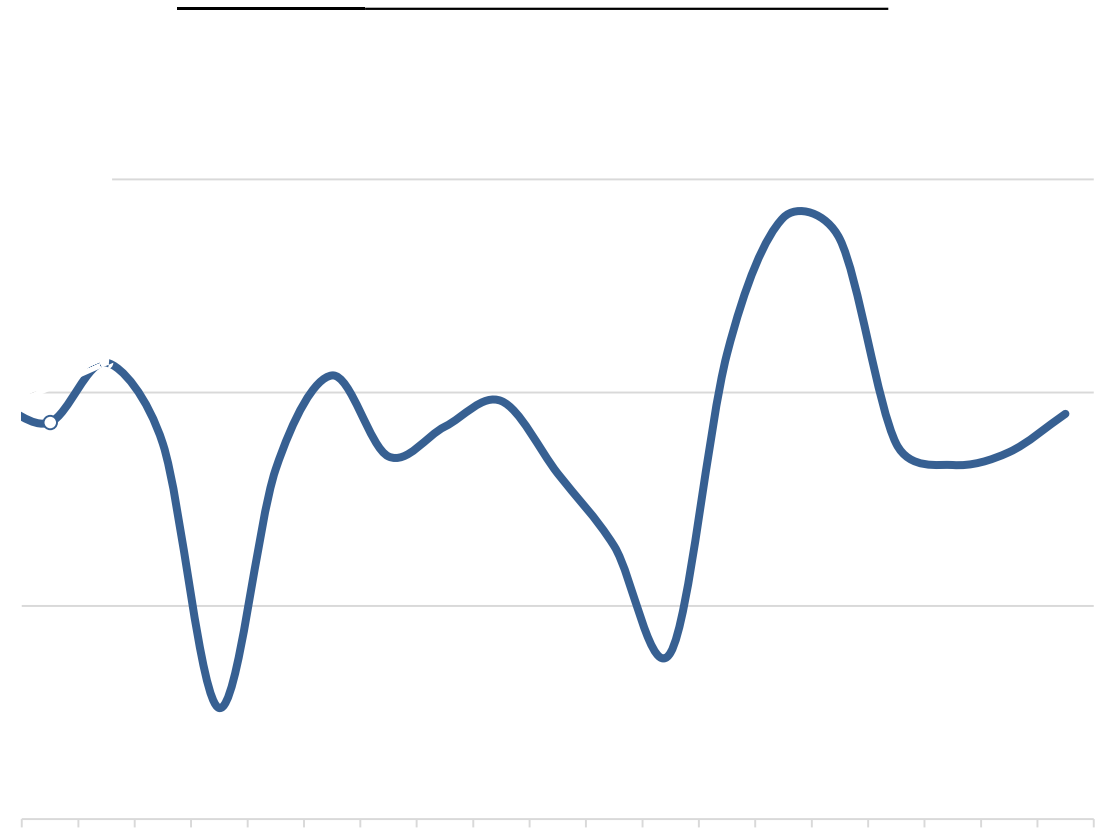
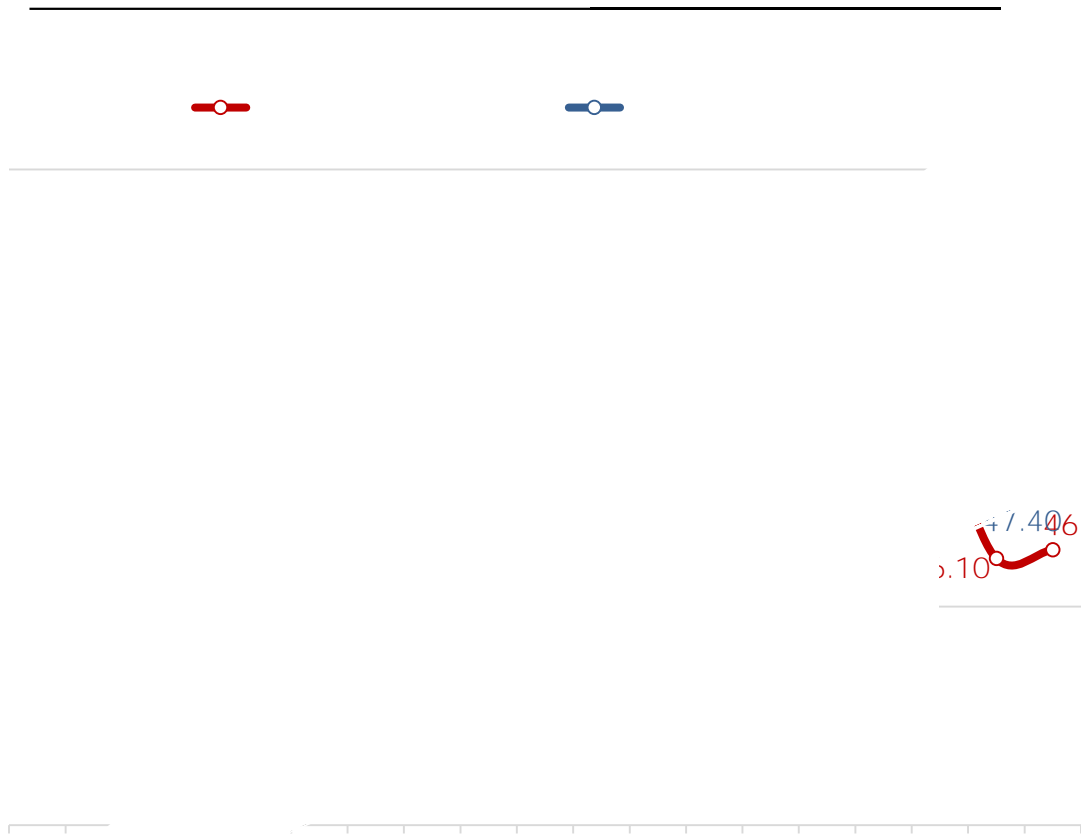


6



7

7 PMI



7

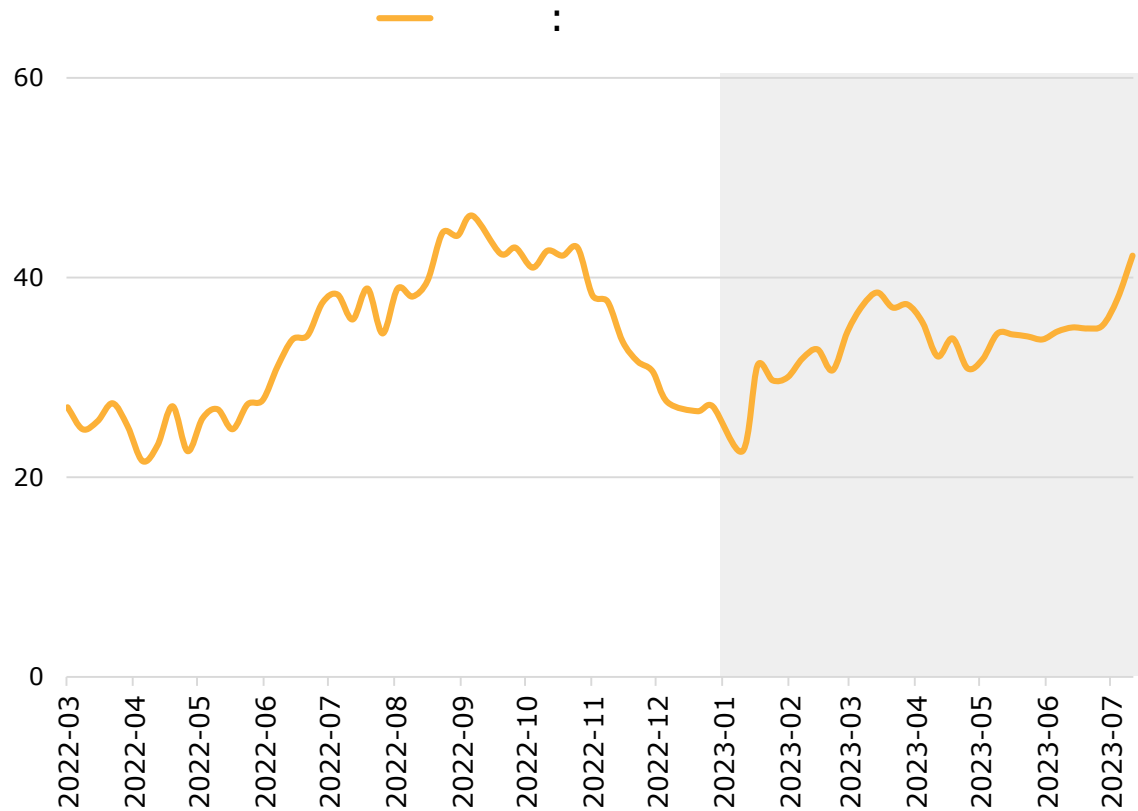
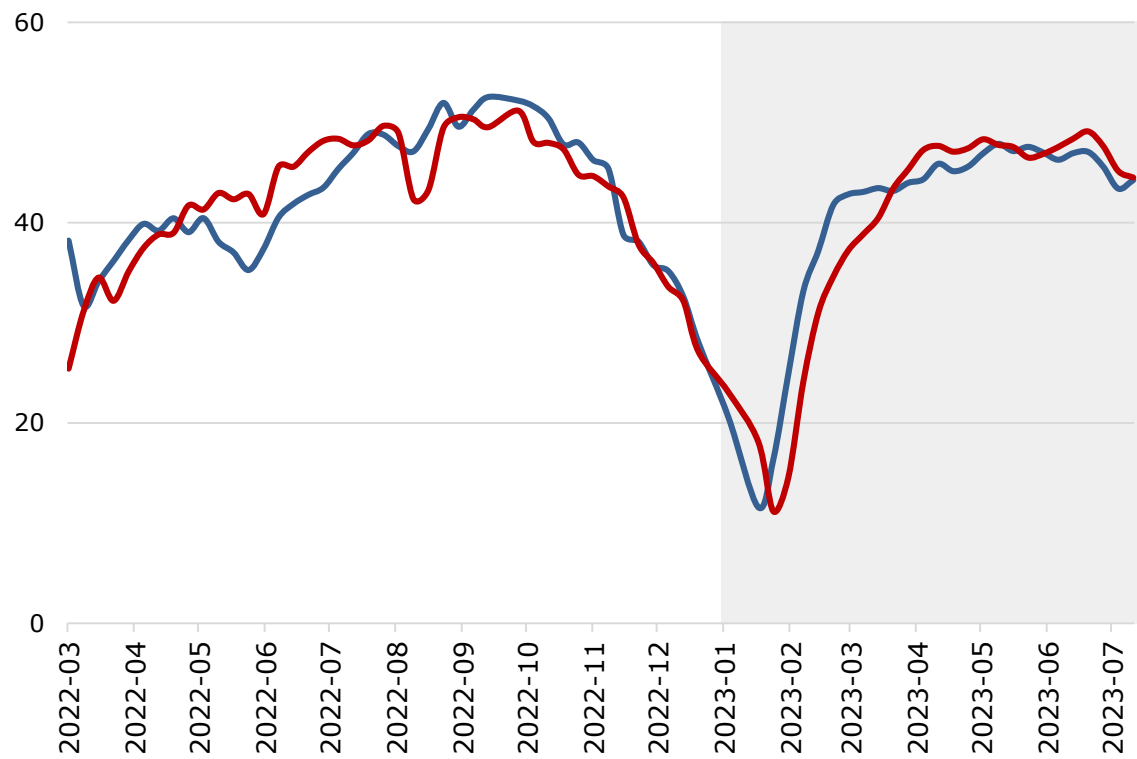


■ 7

PTA

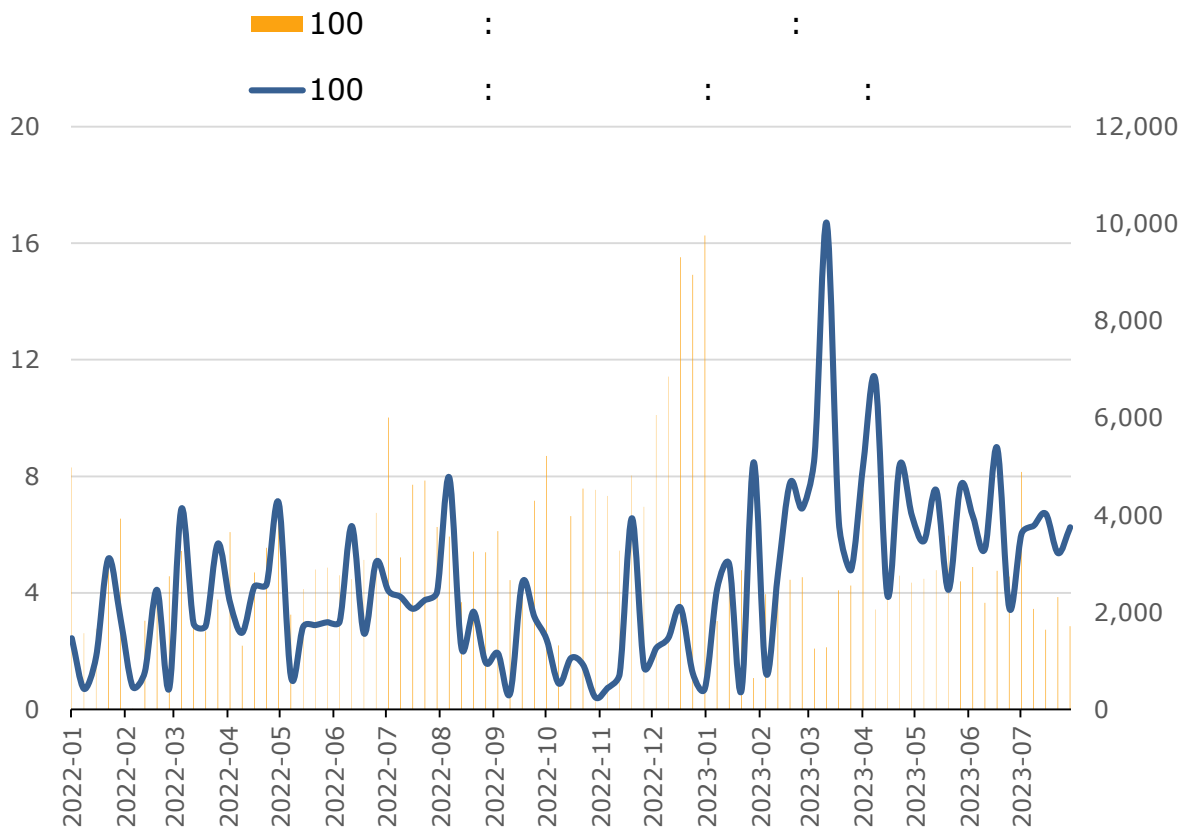
7 W1 7 W2 7 W3 7 W4 7 6

						↓	
						↓	
				↓		↑	
				↑			
						↑	
				↑		↑	
				↓		↑	
PTA:						↓	
				↓		↑	
				↑		↑	

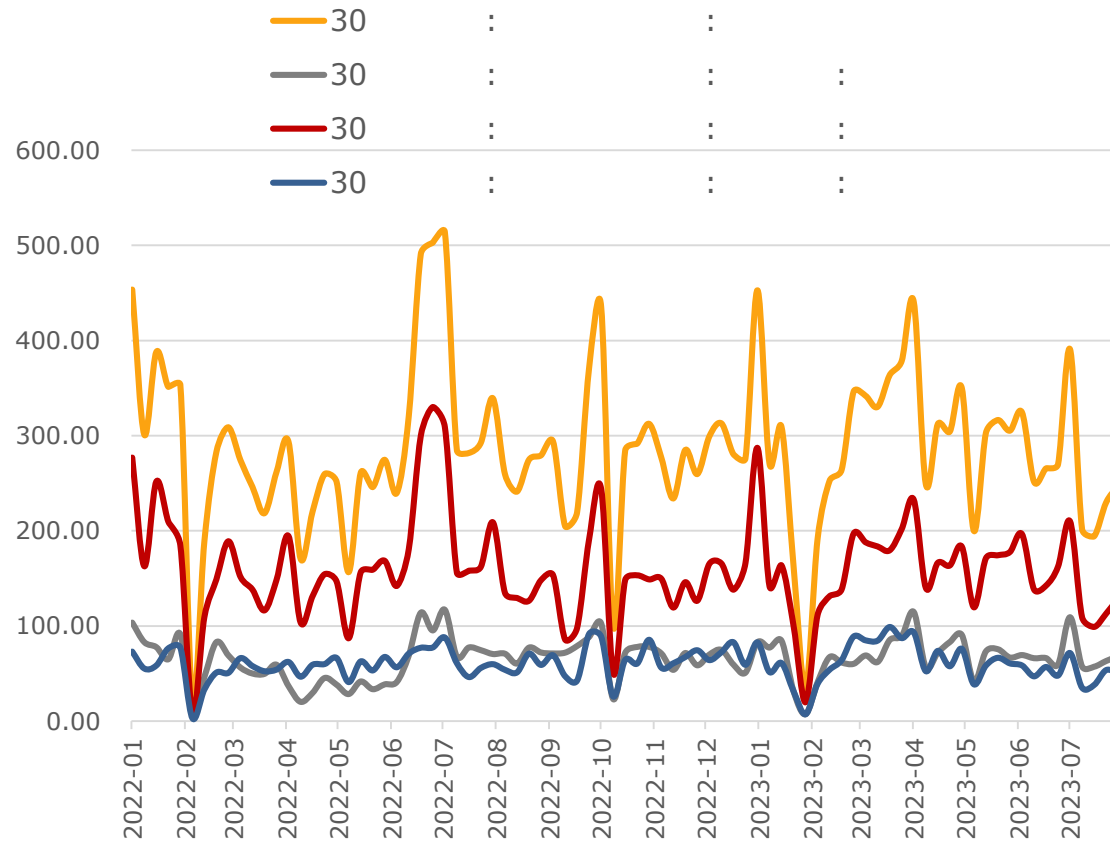


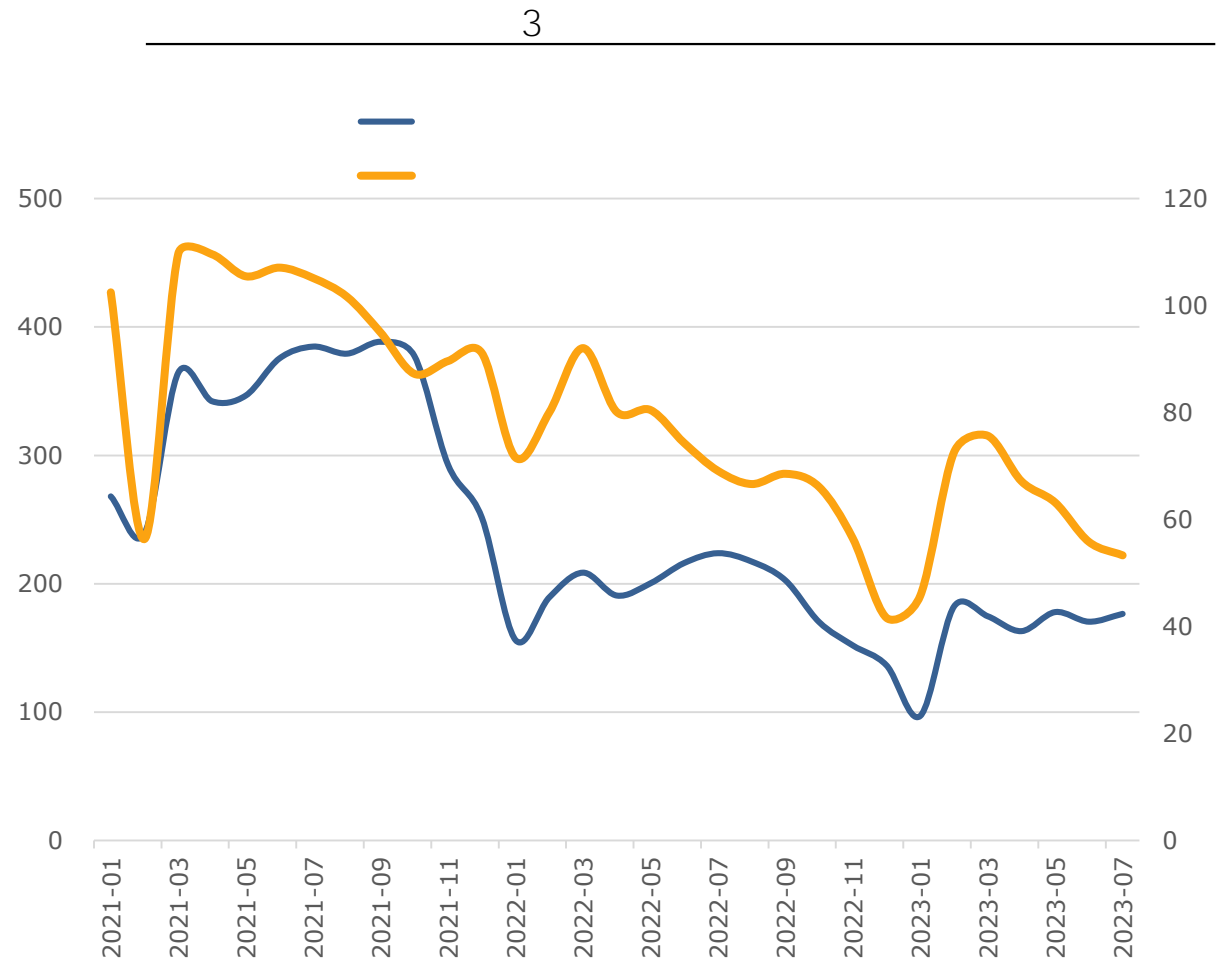
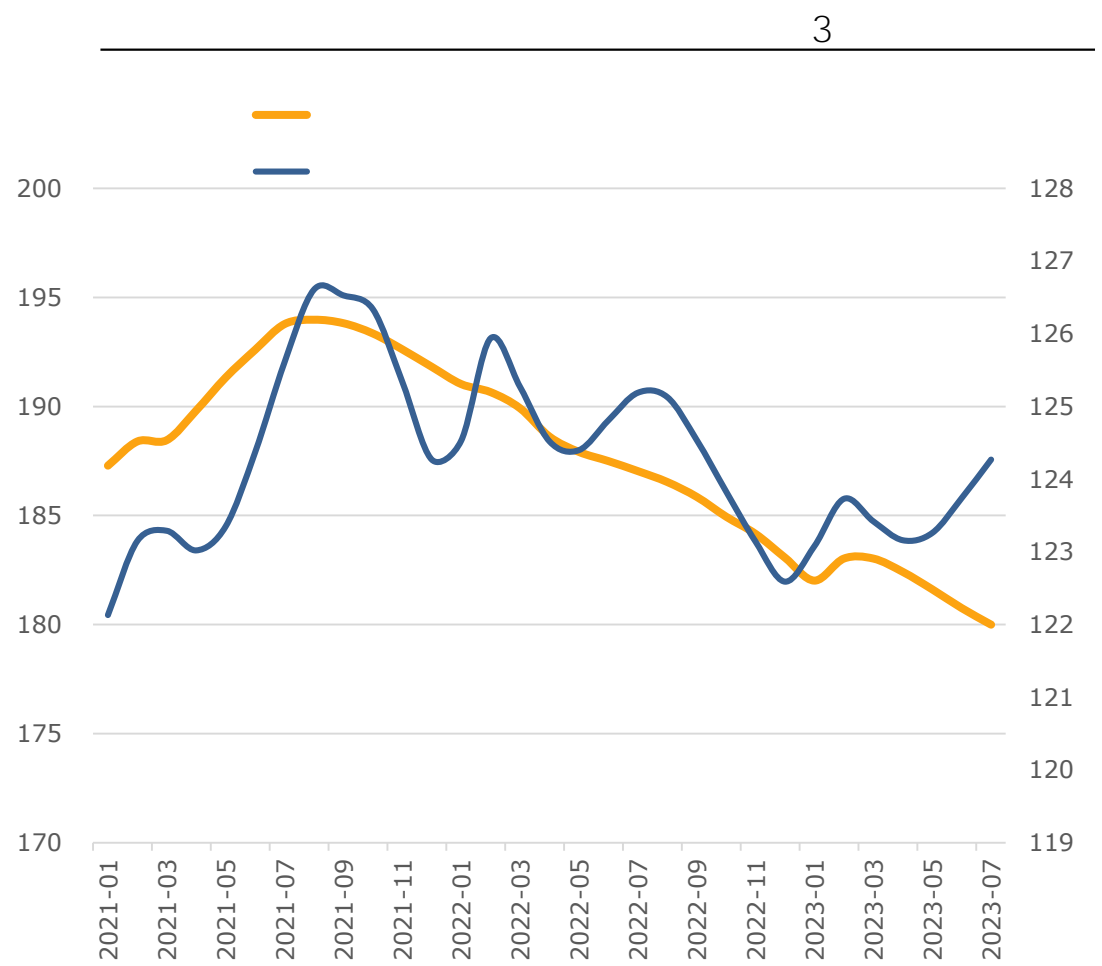
7

7

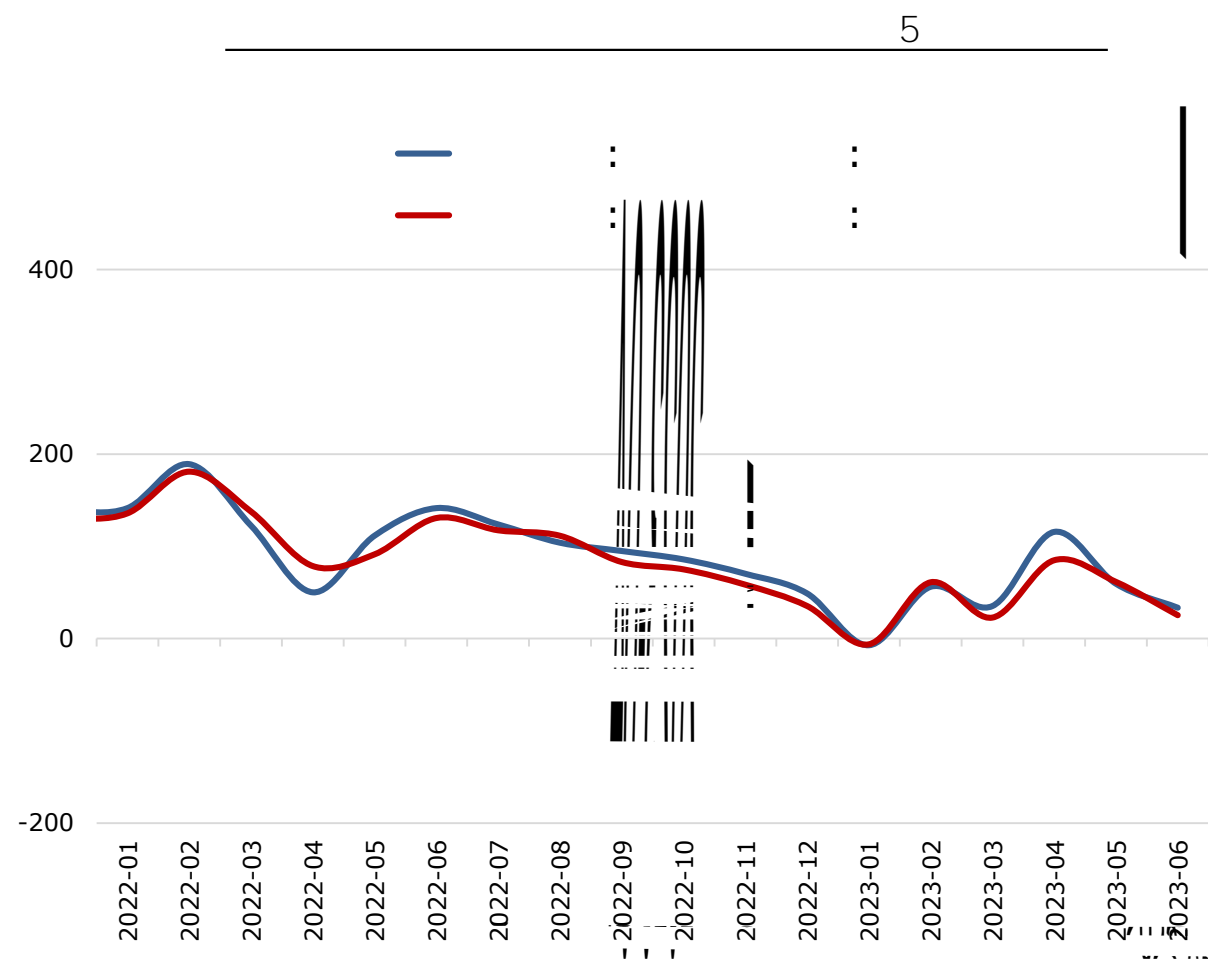
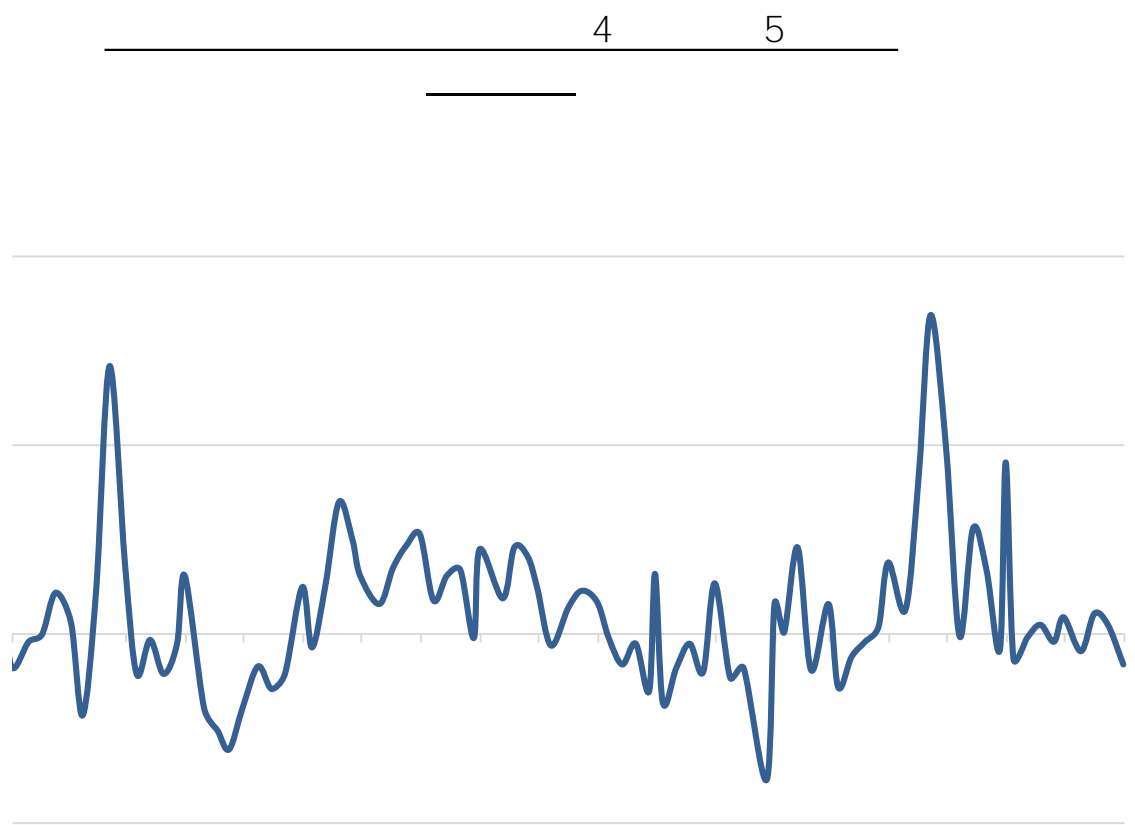


7





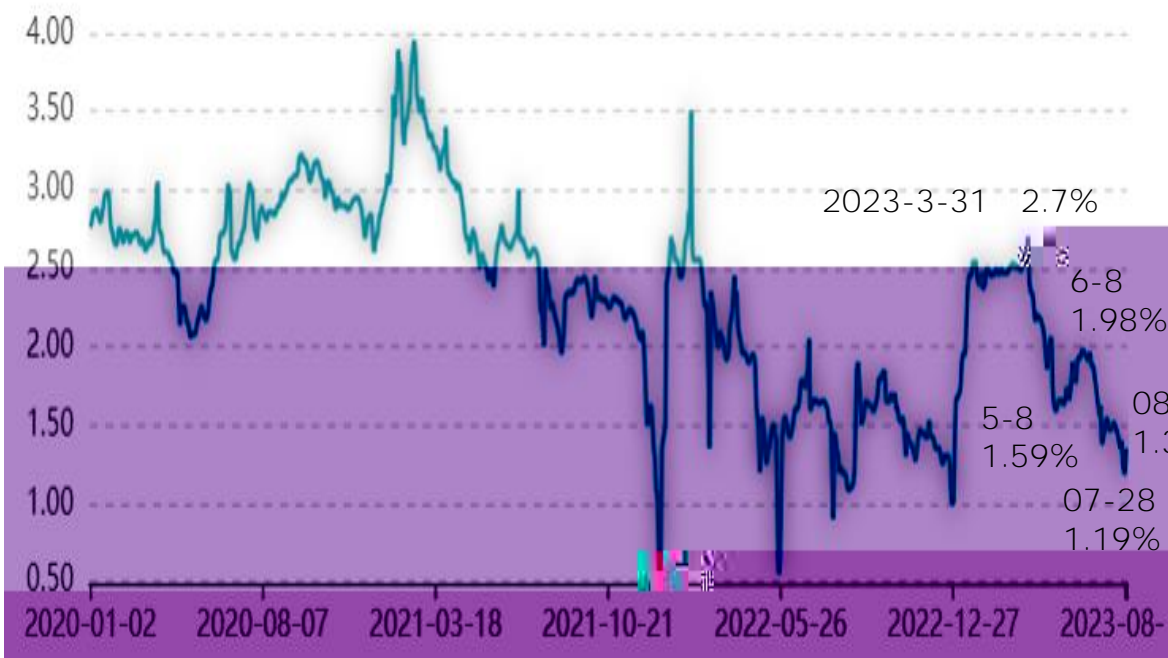
4 5



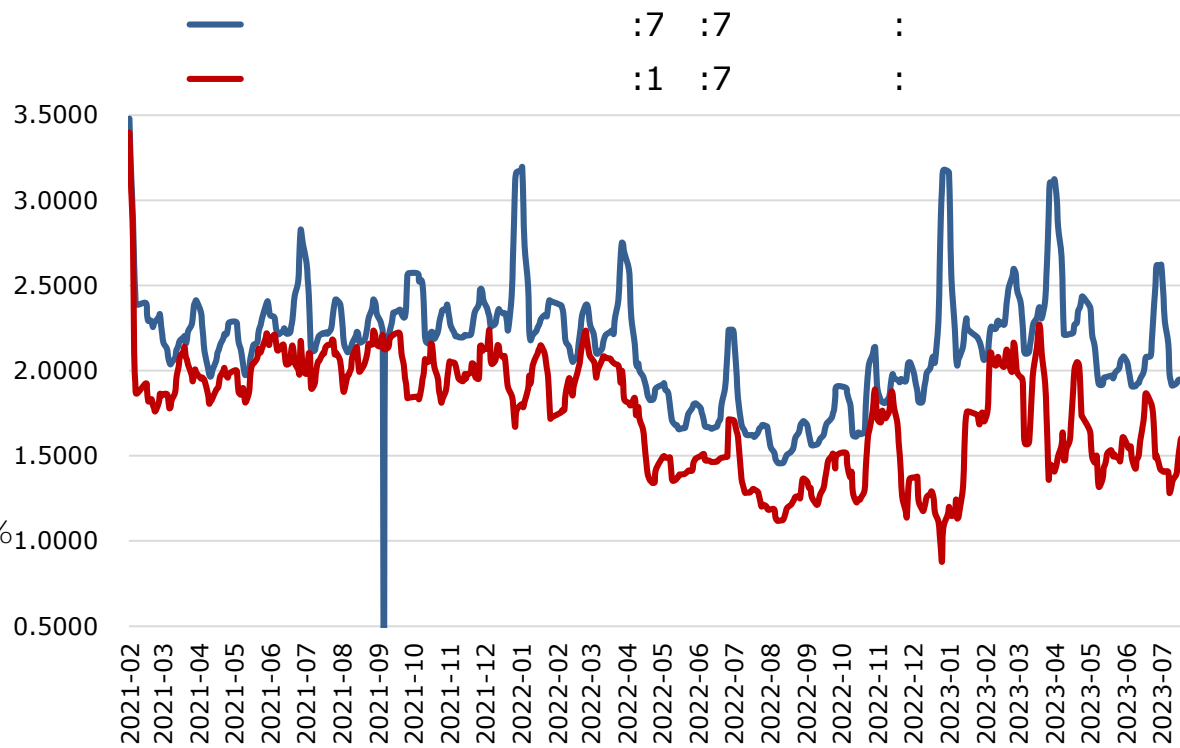
7

■ 7 2022
 ■ 7 DR007 5 DR001

4 5 8 1.59%
 7 1.19%



DR007 6 DR001



“ ”

2012 1497

F3084112

Z0016329

wang.jingjie@gzf2010.com.cn

F03105216

fang.min@gzf2010.com.cn

021-68905325 12 15 03 69 1	0571-89809624 2 1301 111	028-83279757 12 6 802 4	021-50568018 899 1201-1202
0757-88772666 28 2 2301 2302	0755-83533302 A 704A 705	0757-88772888 57 2 3006	0769-22900598 1501B 2
020-31953184 2 1306 105	0763-3808515 2 04 05 06 25	0758-2270761 1704 1705 2	020-61887585 8 803B 171
010-63360528 -5 32 101 12 1211 24 1	027-59219121 A 14 1401-9 193	0531-66671202 B 906 8	0371-86533821 80 1 2 23 2301
0532-88697833 100 905	020-22836158 6 1	020-22836155 6 1	020-22836182 6 1
020-22836185 6 1	021-50390265 388 701		



广州期货股份有限公司