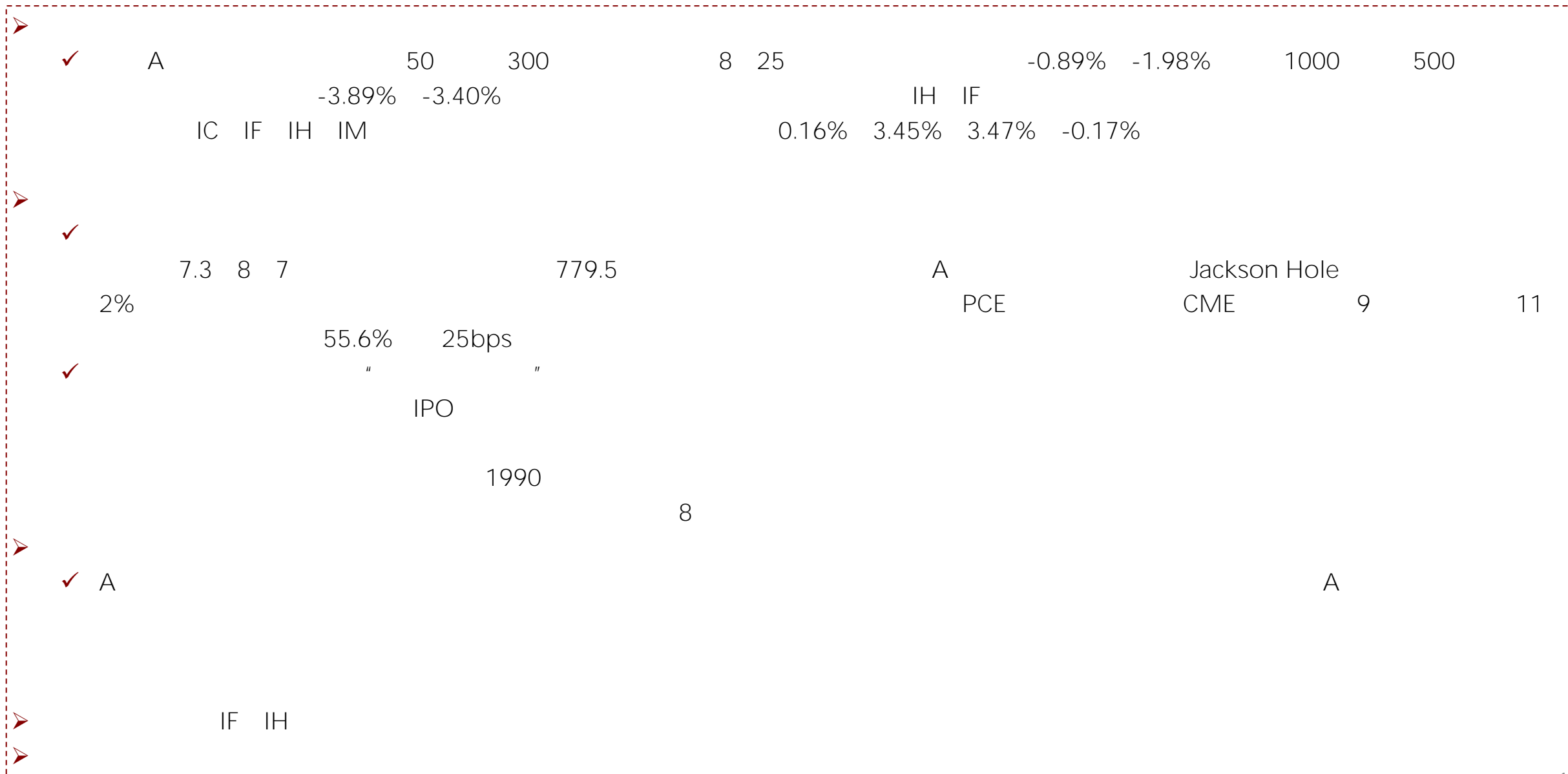


2023 08 27





珍德健康 专业 健康 创新 以人为本 追求卓越



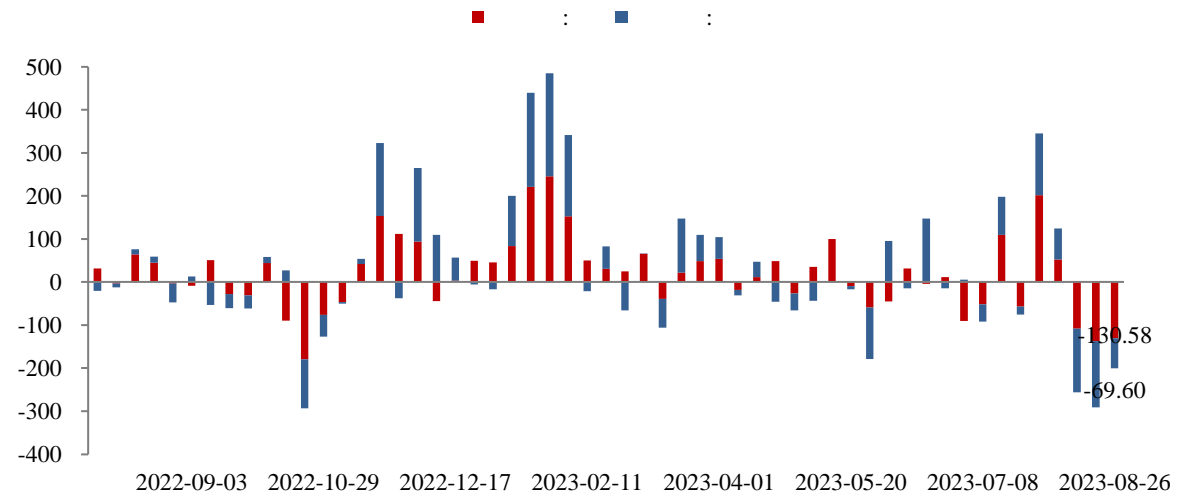
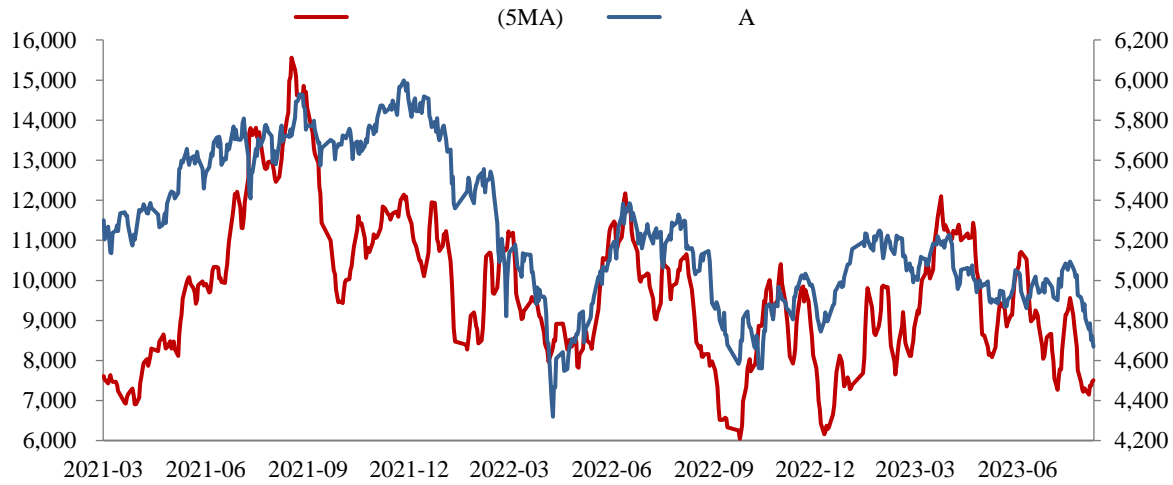
		(%)		(%)
	3,064.07	-2.17	3,181.10	1.52
	10,130.47	-3.14	4,328.06	1.51
	2,040.40	-3.71	<del>2,070.09</del> 19-1 78371068	1.7
<b>50</b>	2,485.33	-0.89	493.12	0.92
<b>300</b>	3,709.15	-1.98	1,818.36	0.97
<b>500</b>	5,581.21	-3.40	1,107.94	1.67
<b>1000</b>	5,879.03	-3.89	1,413.34	2.38

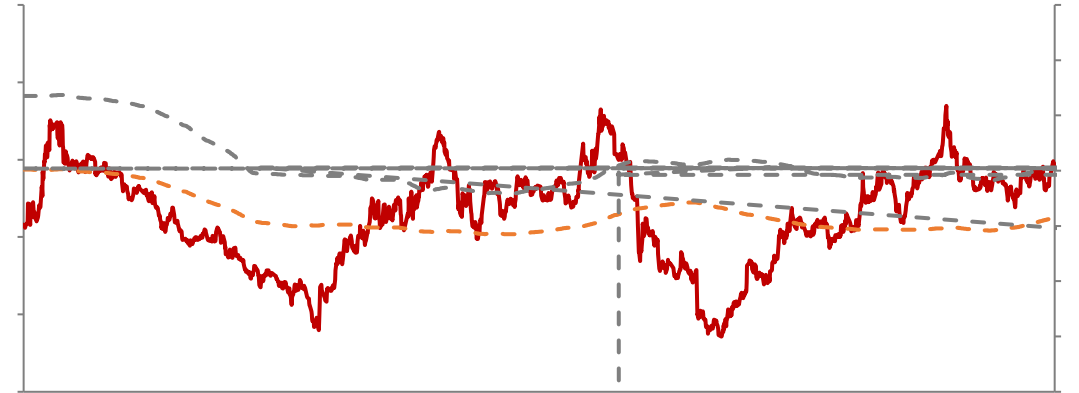


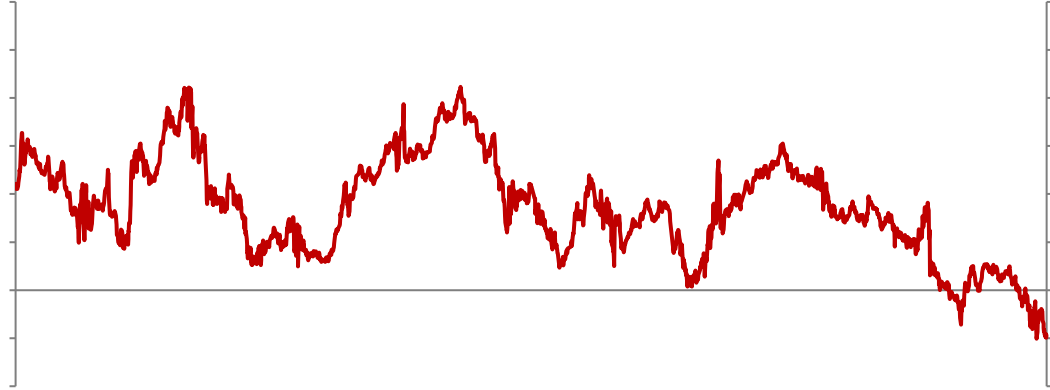
珍德健康 专业 健康 创新 以人为本 追求卓越



A









珍德健康 专业 健康 创新 以人为本 追求卓越





□ 8 20

" " "

" " "

□ 8 21 8 LPR " " 1 LPR



021-68905325	0571-89809624	028-83279757	021-50568018
12 15 03 69 1	111 2 1301	12 6 802 4	899 1201-1202
0757-88772666	0755-83533302	0757-88772888	0769-22900598
28 2 2301 2302	A 704A 705		1501B 2
020-31953184	0763-3808515	0758-2270761	020-61887585
			8 803B 171
010-63360528	027-59219121	0531-66671202	0371-86533821
	A 14 1401-9 193		80 1 2 23 2301

