

2012 1497



020-22139813

F3022666
Z0013612
xuky@gzf2010.com.cn

F3068041
lei.lei@gzf2010.com.cn

9 LME 9 29
LME 2349.5/ 5.03%
9 28 19445 / 0.56%

9

PMI

9

K



LME



2022.08.07

2022.08.14

2022.08.22

" "

18500-19000



9 LME 9 29
 LME 2349.5/ 5.03% 9 28
 19445 / 0.56%

18500-19000

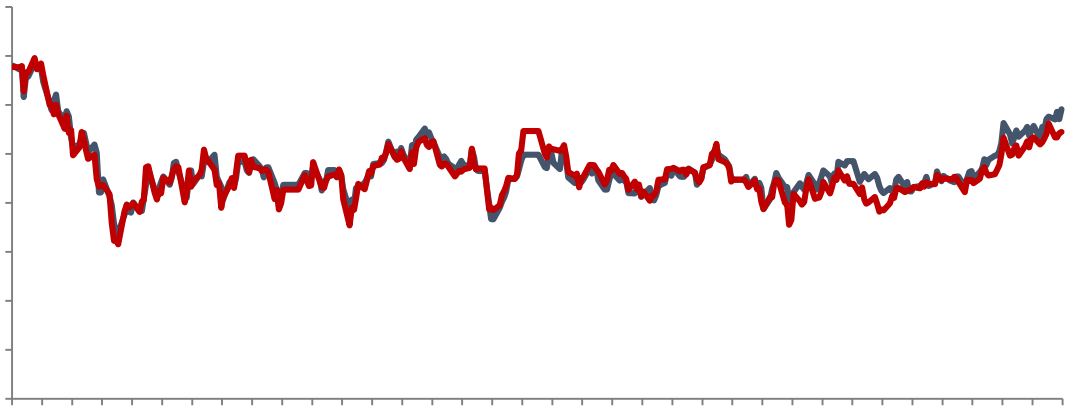
9

9 PMI

1	PMI	2	CPI	CPI

Wind

3

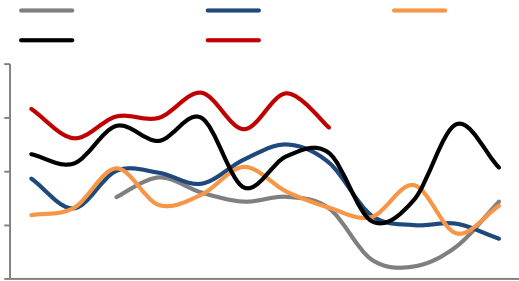


— —

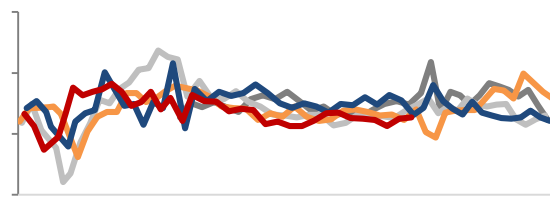
Mysteel

8

9.86%



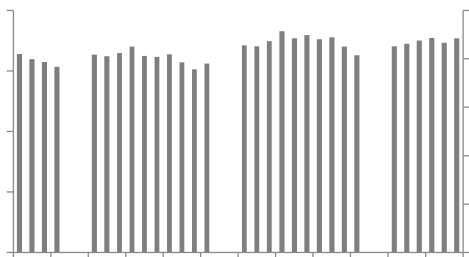
4



— — —

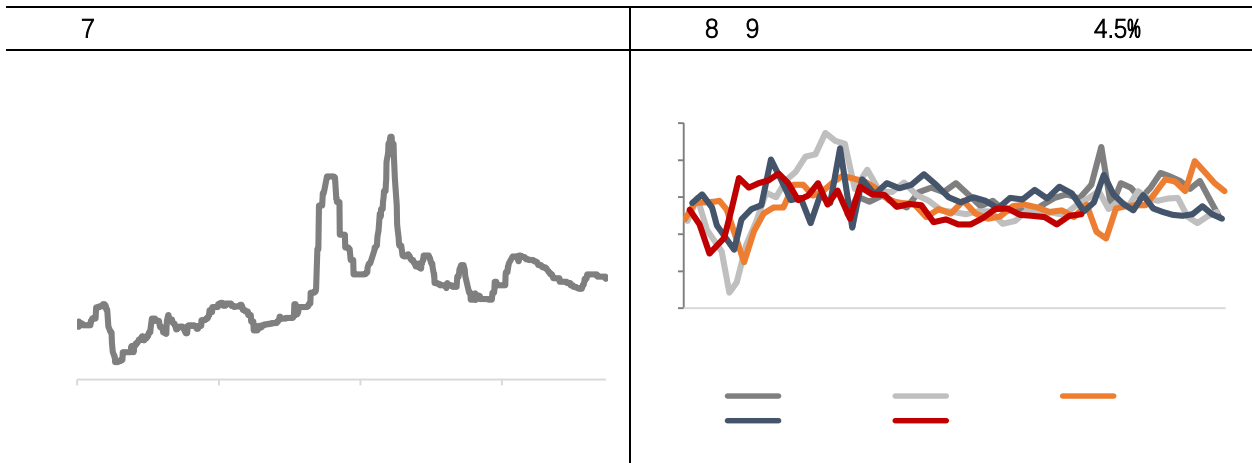
Wind

5 8

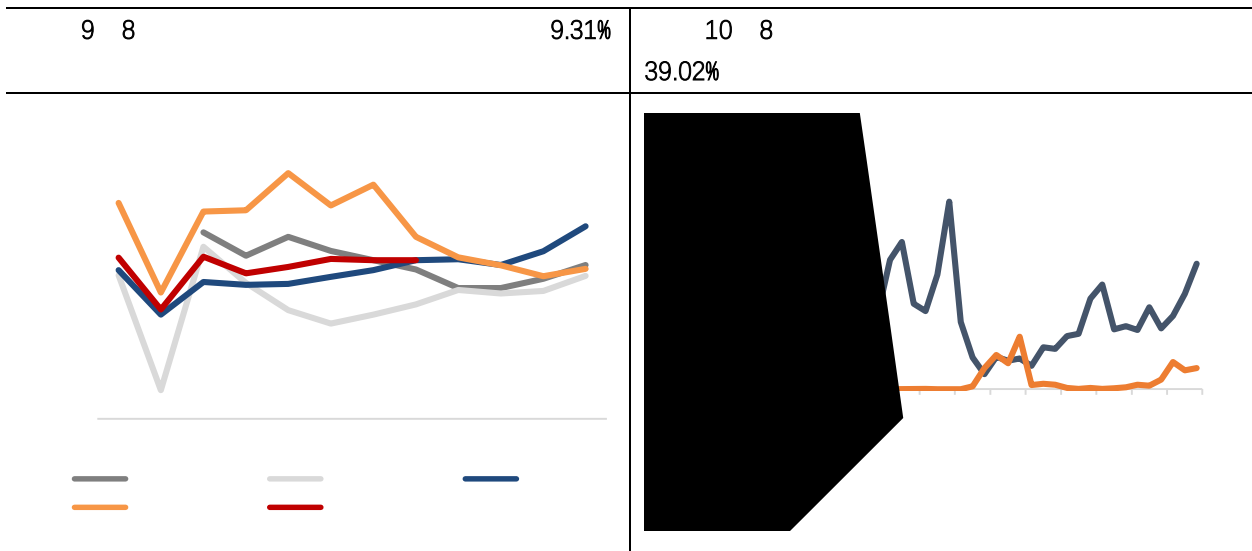


6

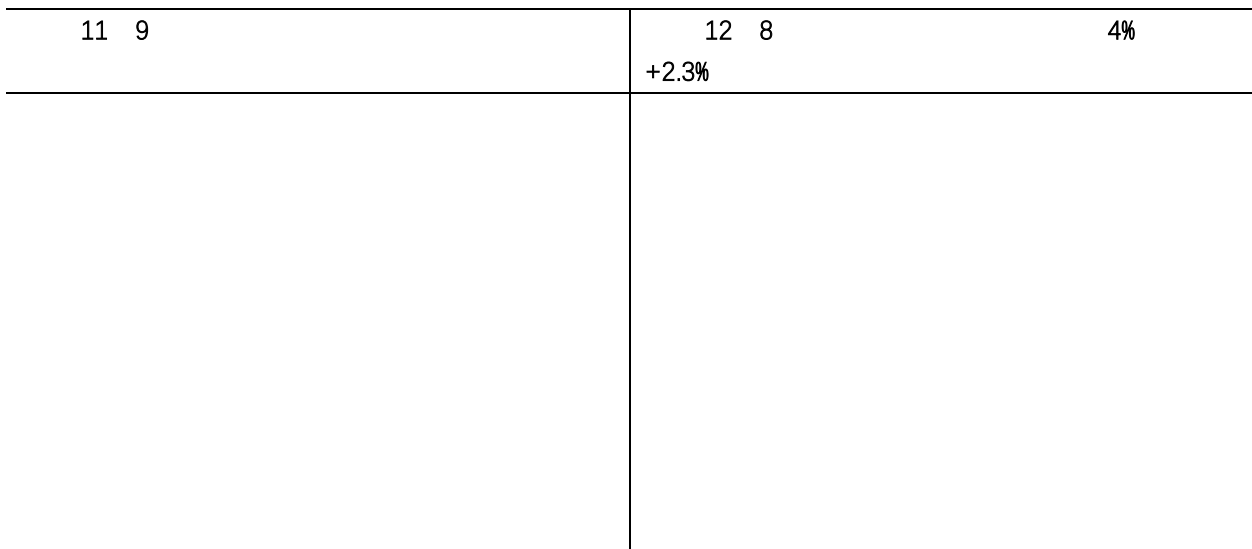
Mysteel



Wind



Wind



Wind

8

13 9	265 /	14 8	56.1%	+0.54%
------	-------	------	-------	--------

Mysteel

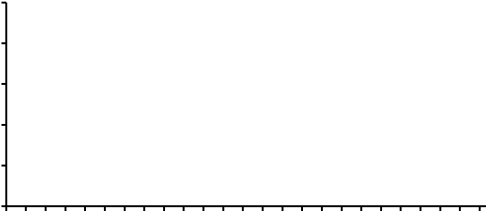
15 8	60.8%	-6.01%	16 8	49.1%
------	-------	--------	------	-------

-3%

Mysteel

17 SHFE	7.91	18	49.4
---------	------	----	------

Wind

19	LME	50	20	59.95
				

SMM

21	7	15,627 /	23	

Wind

BACK

22	-		23	-	BACK

Wind

24 LME	25

Wind

	ADP	9		
	8.9	2021		15
	17.7	18		
	PMI	4		
	9	PMI	47.2	8
	47.1			46.7
	+		JMCC	

“ ”

