

2023 10 22



# B

7

9 MPOB

7-8

52

9-10

9

713

23.6"

11

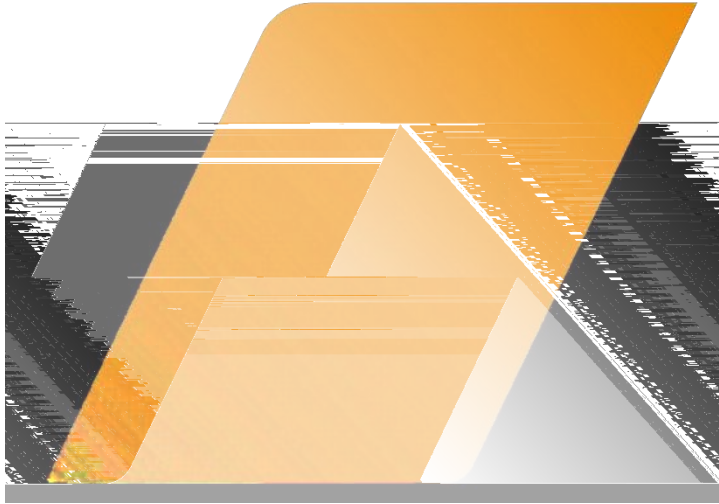
9-10

23/24

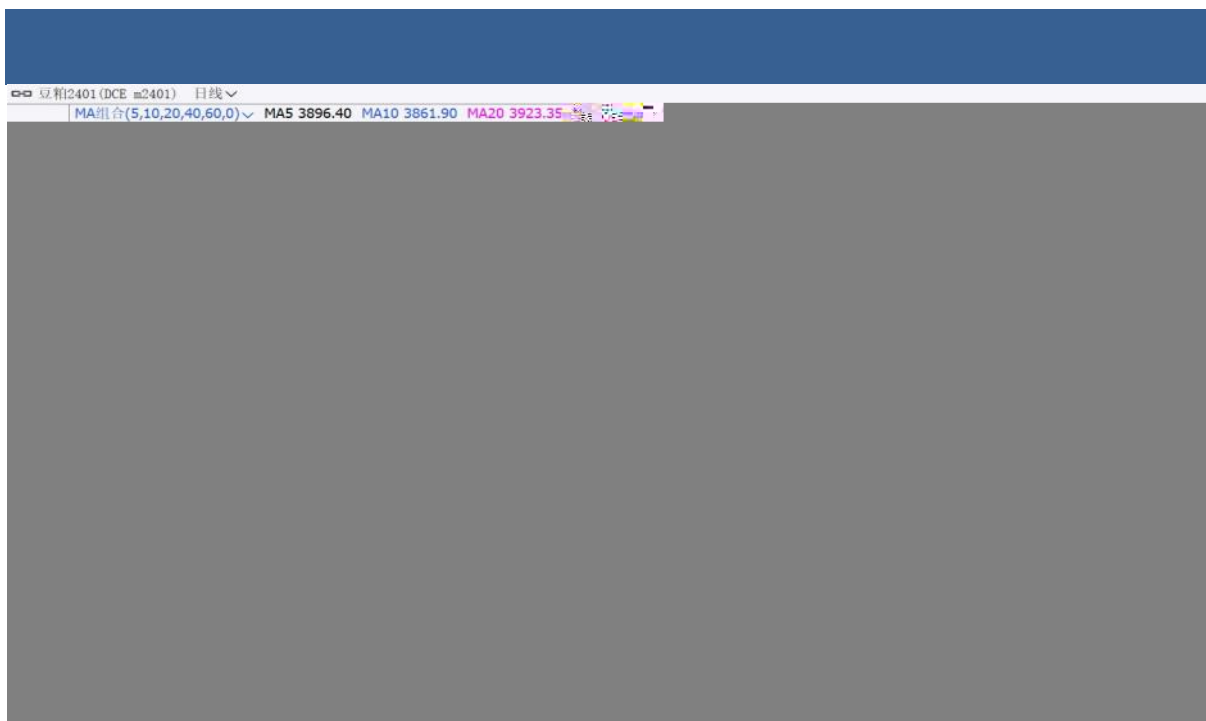
8





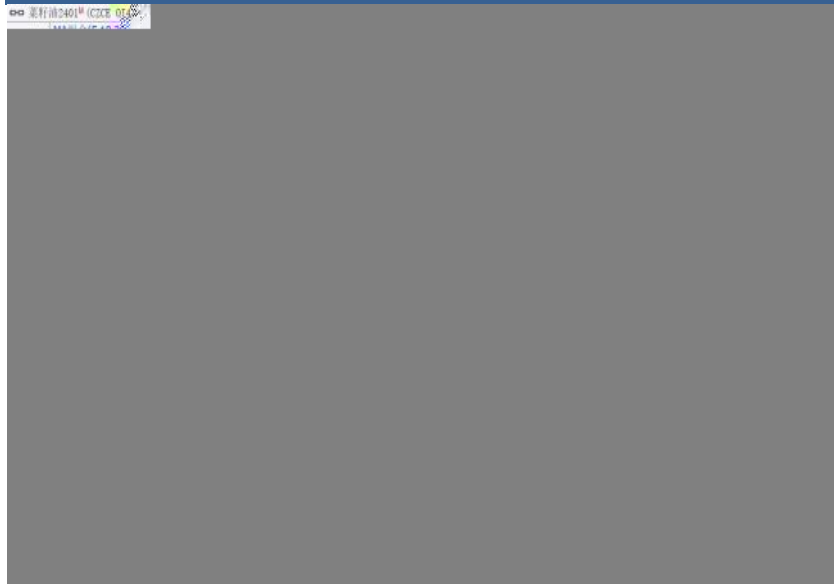




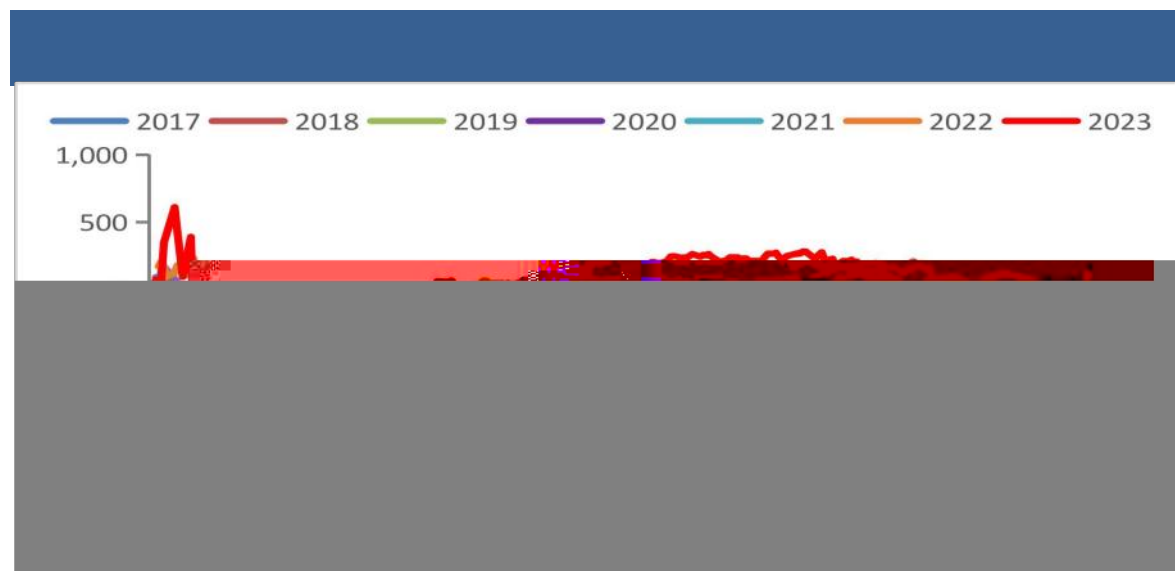
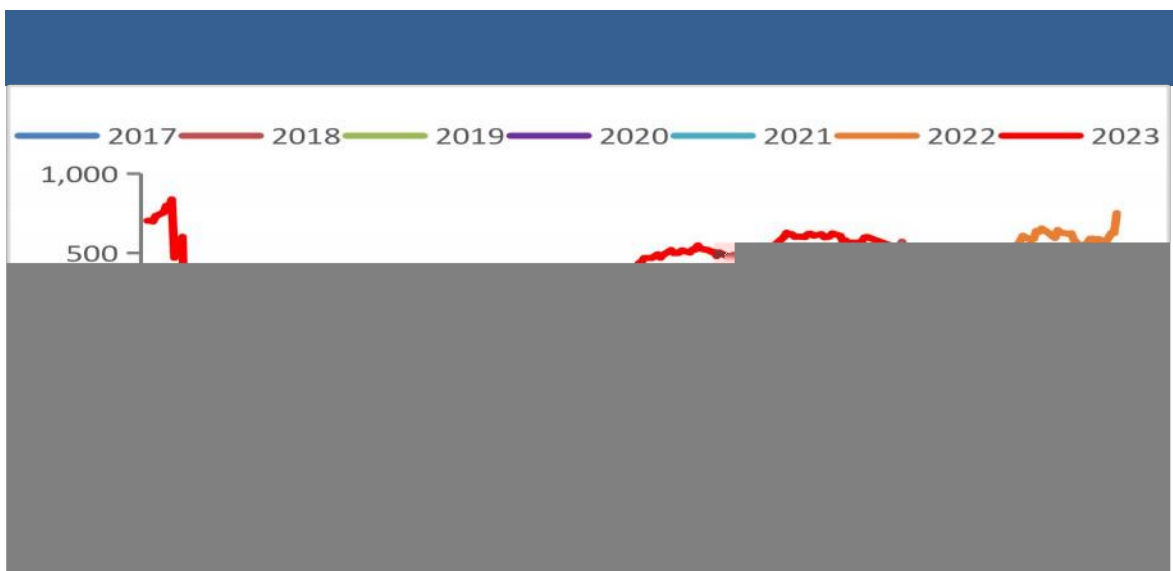


□								CBOT		
□	10	20	01	3913 /	1.03%	01	2925 /	0.41%		

合约行情

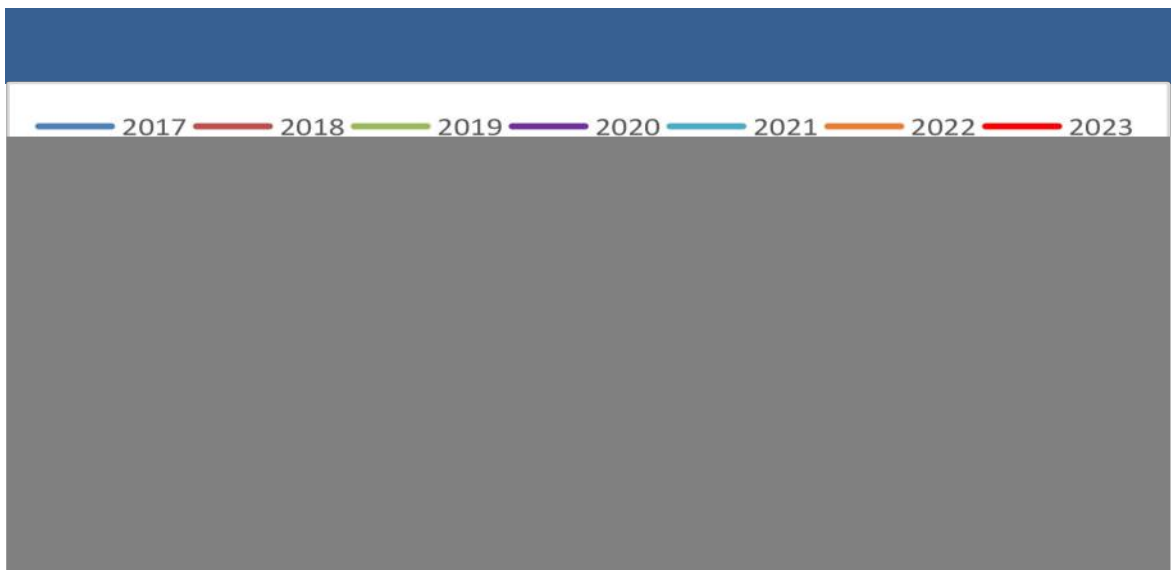


□	10	20	01	7228 /	0.61%	01	7972 /	0.62%	01
□	8621	/	3.77%						









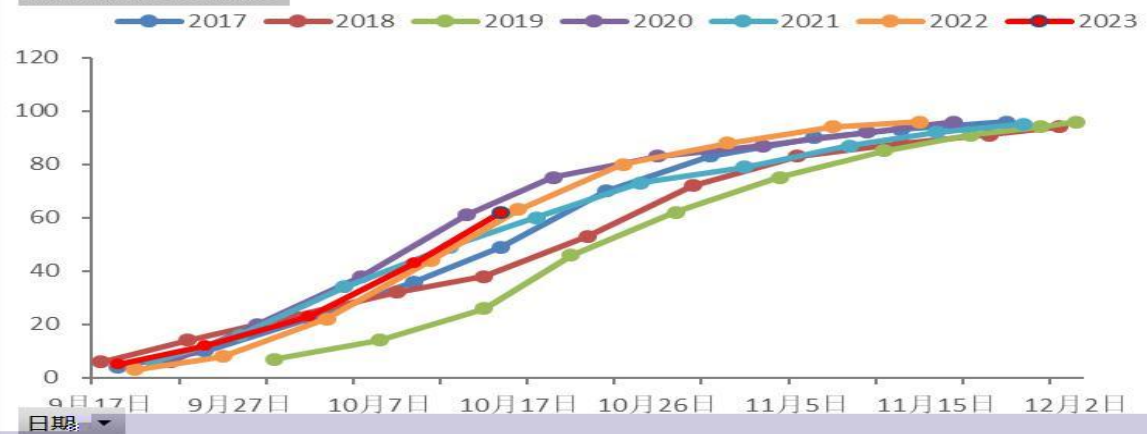


**USDA-美国大豆供需平衡表**

项目	2014/15	2015/16	2016/17	2017/18	2018/19	2019/20	2020/21	2021/22	2022/23	2023/24	2024/25
期初库存	83.4	90.1	89.2	76.1	83.4	87.2	87.5	87.5	83.5	83.6	83.6
产量	82.7	89.5	87.6	74.9	82.6	86.3	86.3	86.2	82.7	82.8	82.8
净出口	52	49.3	50.6	47.4	51	51.4	49.5	49.6	50.9	50.1	49.6
期末库存	197	302	438	909	525	257	274	274	260	250	268
总供给	4296	4412	4428	3552	4216	4435	4276	4270	4205	4146	4104
总需求	22	22	14	15	20	15	30	25	30	30	30
期末库存	4515	4735	4880	4476	4761	4707	4581	4569	4496	4426	4403
净出口	1901	2055	2092	2170	2141	2205	2220	2212	2300	2290	2300
期末库存	2165	2134	1763	3841	2268	2470	1993	2300	1823	1723	1723
产量	4206	4183	4213	4298	3976	3955	4508	4493	4330	430	430
净出口	220	220	302	432	907	525	256	213	250	268	268
期末库存	5.76%	5.23%	5.26%	7.17%	10.17%	22.86%	13.26%	5.68%	4.79%	5.77%	6.23%



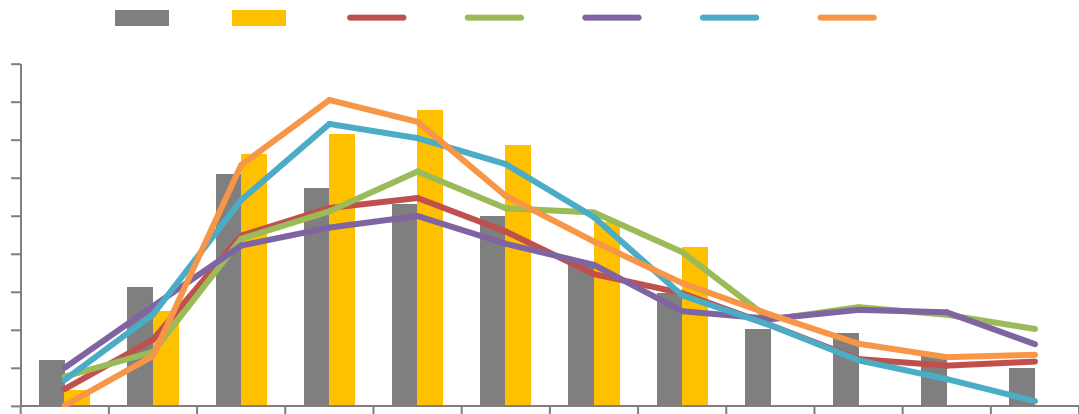
求和项:大豆:收割进度



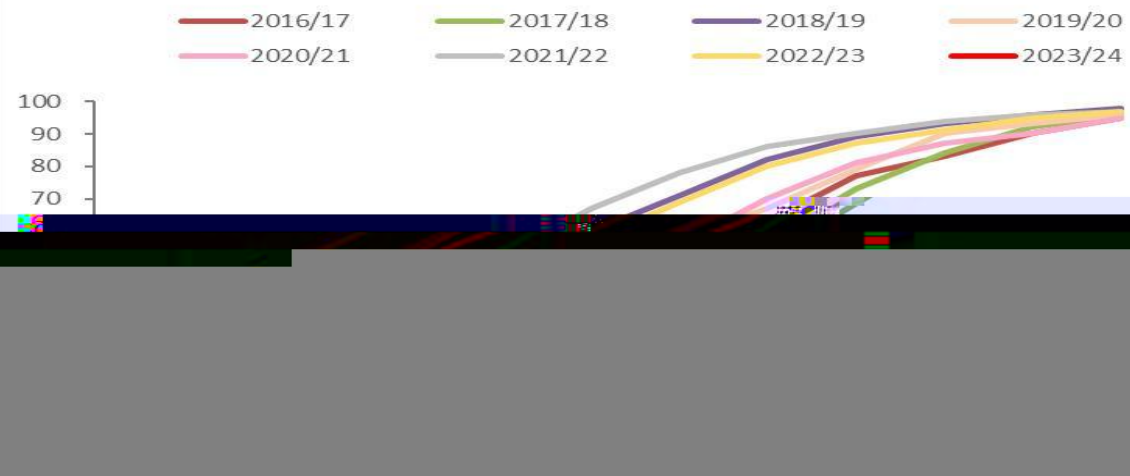
求和项:大豆生长优良率%



Blank blue header bar for the first chart.



Blank blue header bar for the second chart.



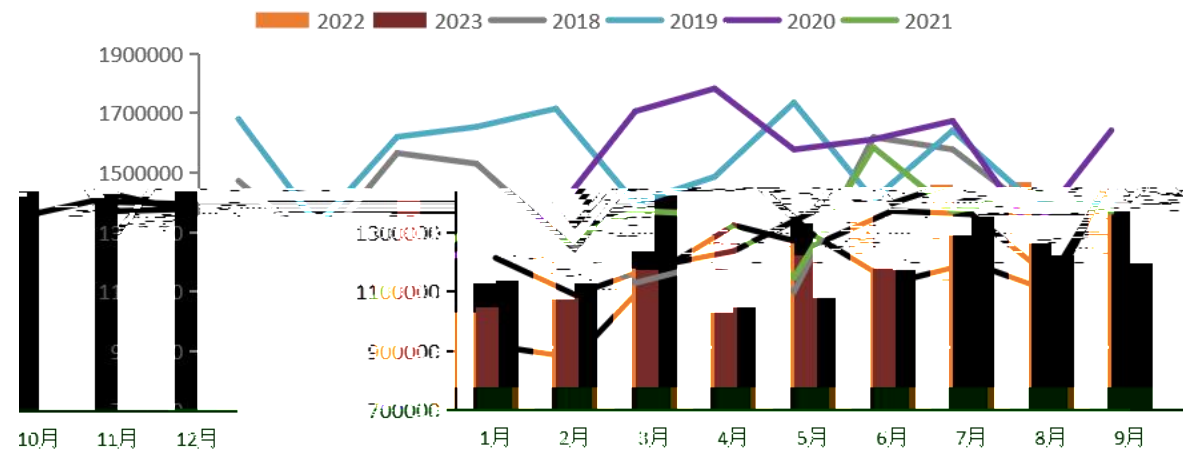
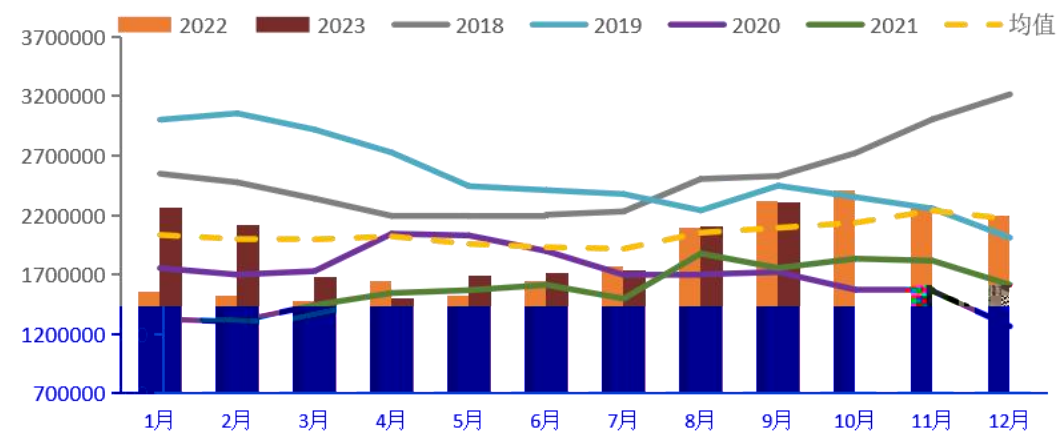
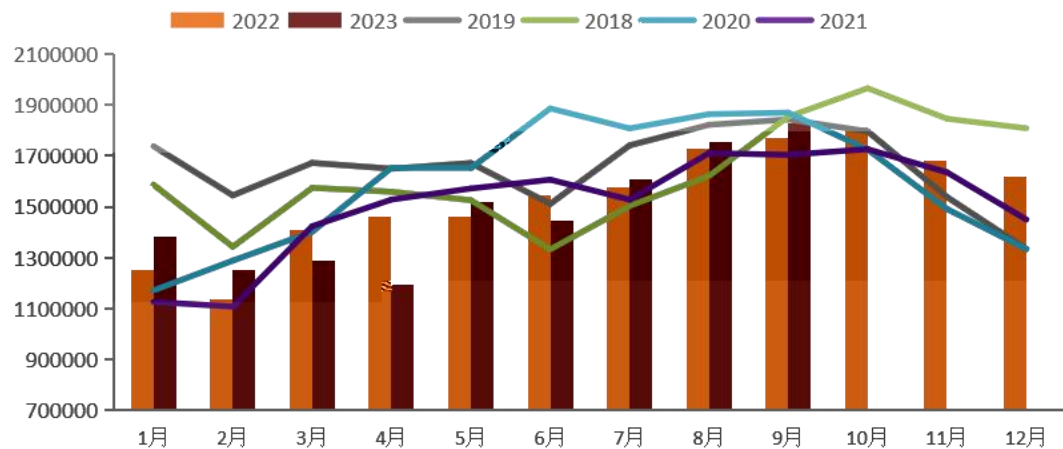
Blank blue header bar for the third chart.

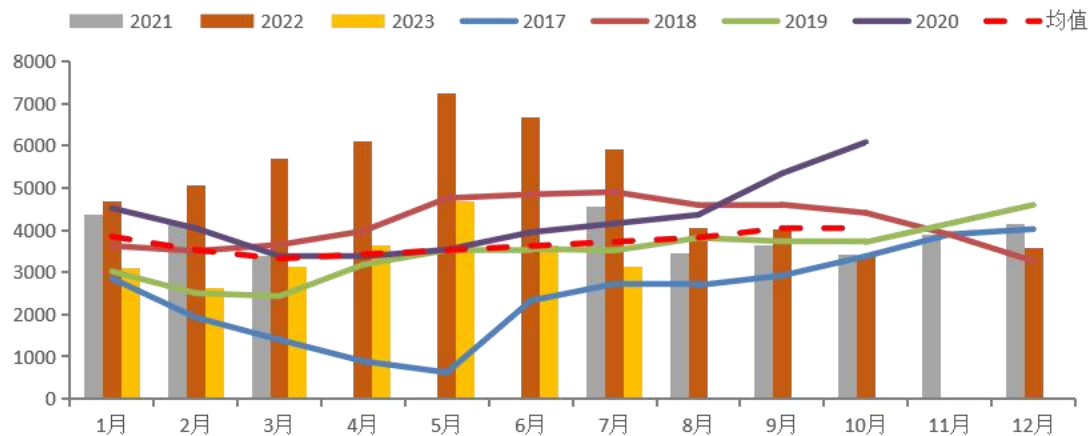
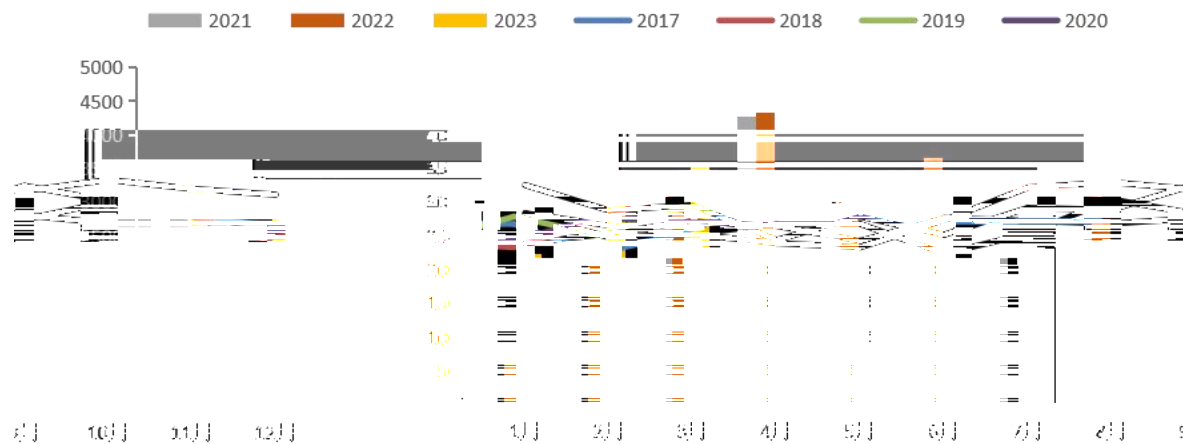


Blank blue header bar for the fourth chart.

USDA:南美大豆2022/23年度供需状况 (单位:百万吨)





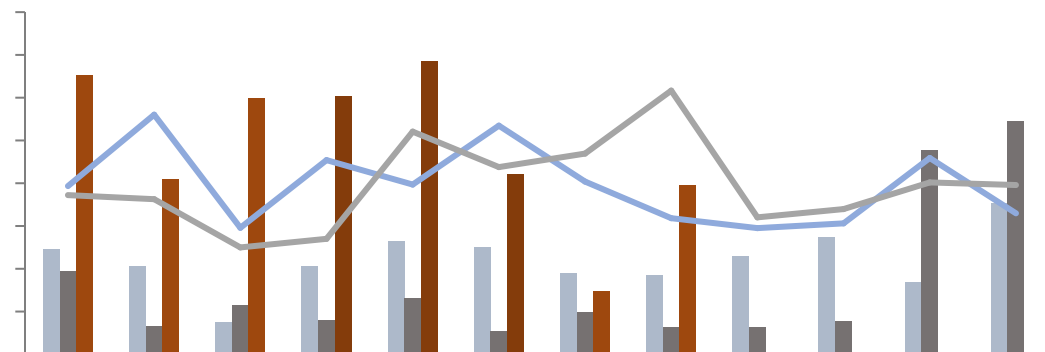


[Empty blue bar]

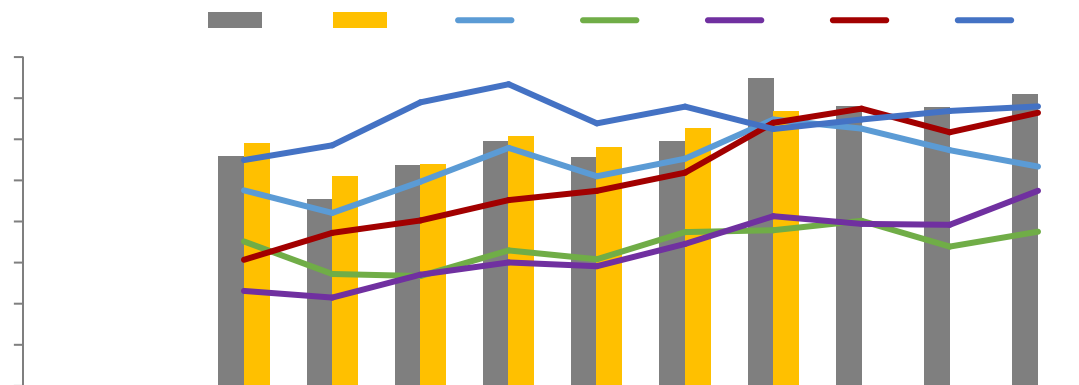
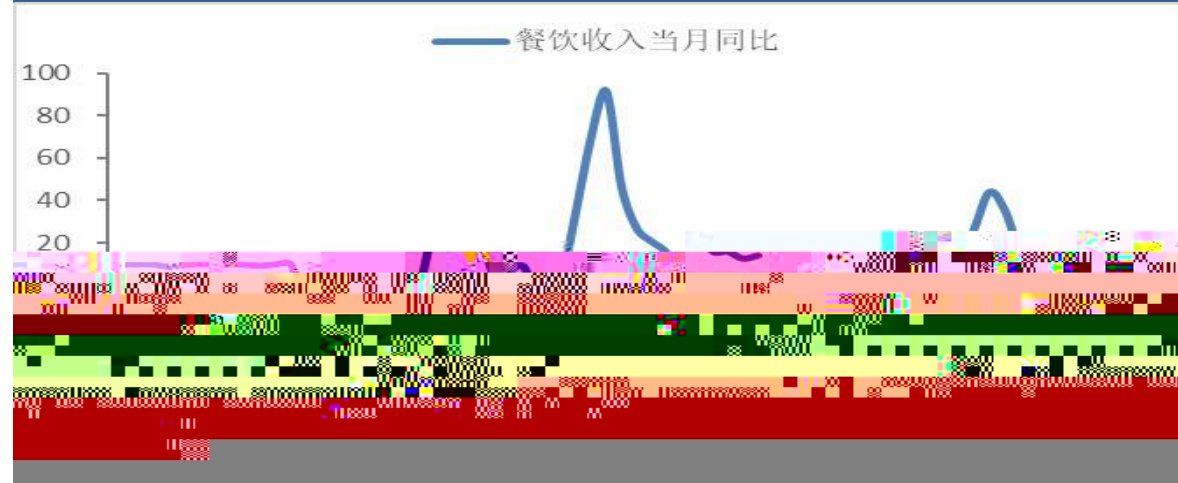
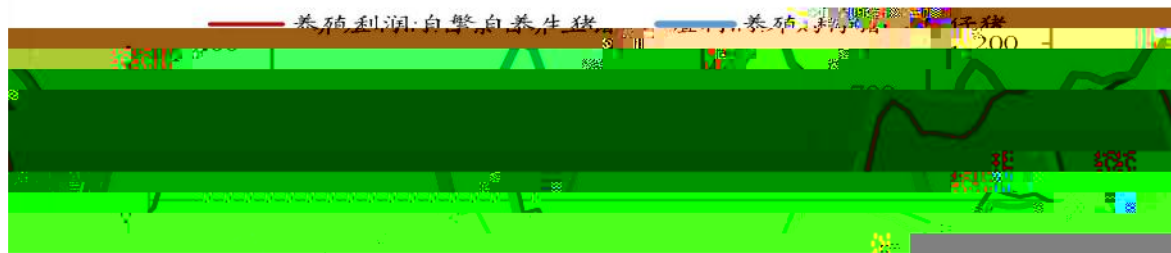
[Empty blue bar]

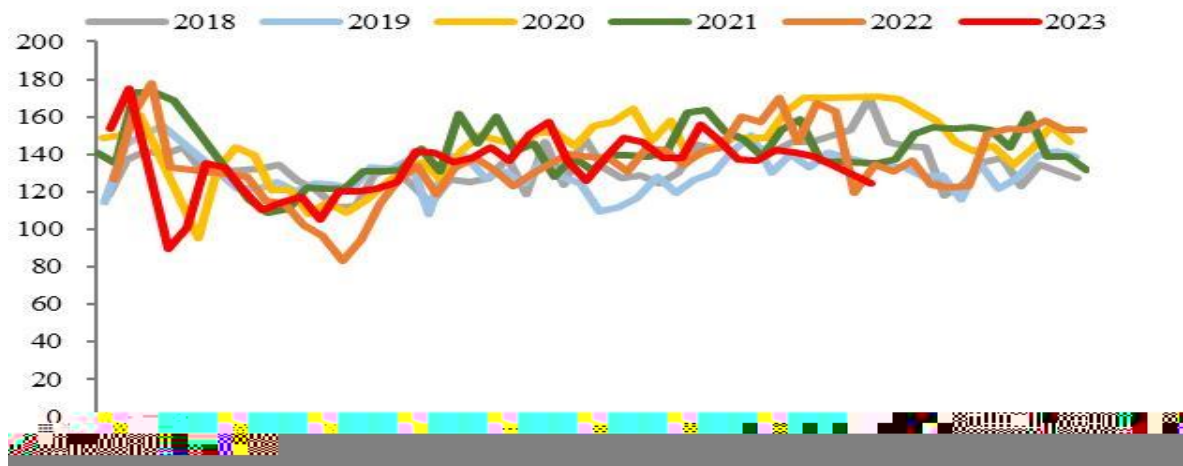
[Empty blue bar]

[Empty blue bar]

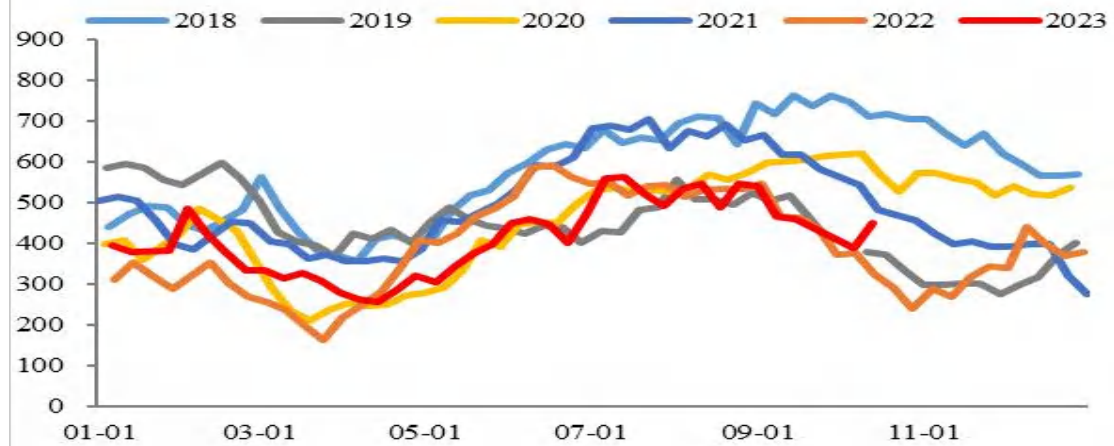




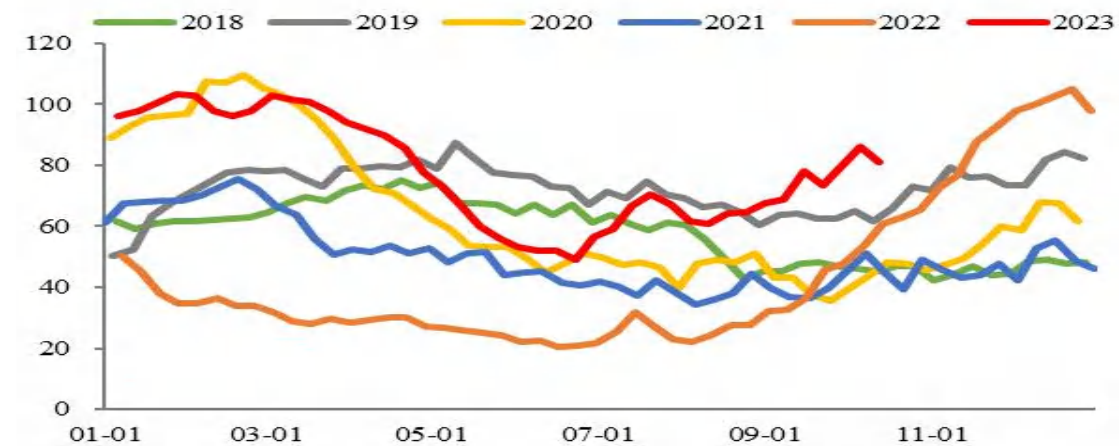
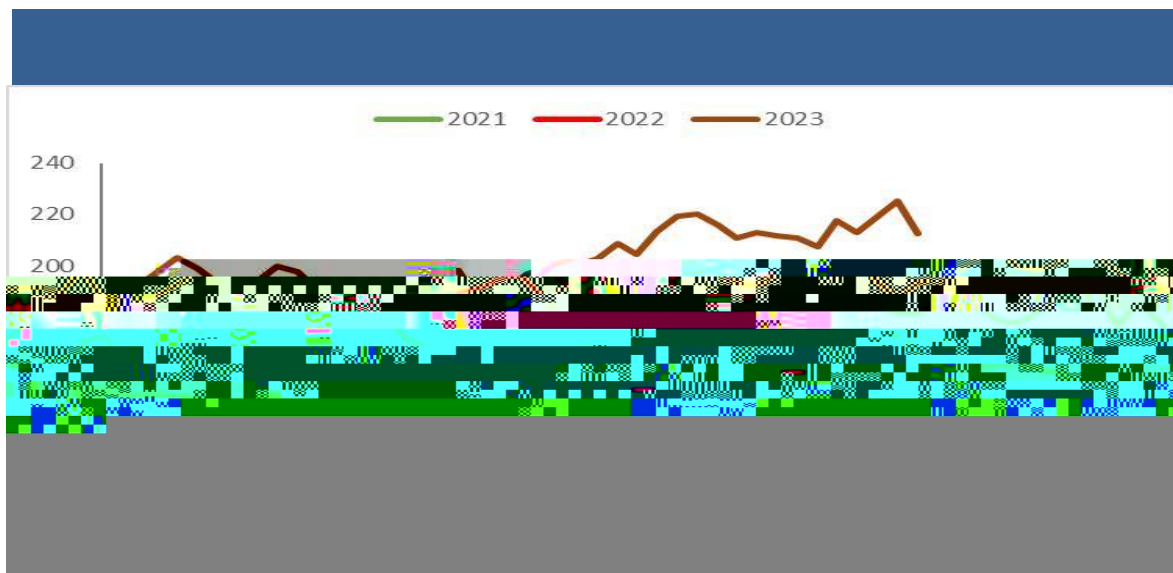




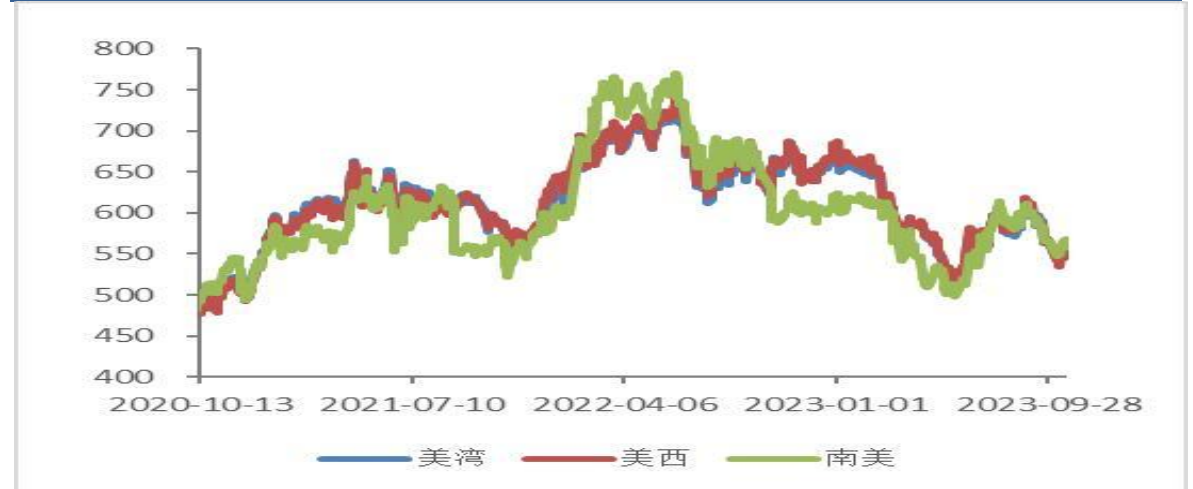
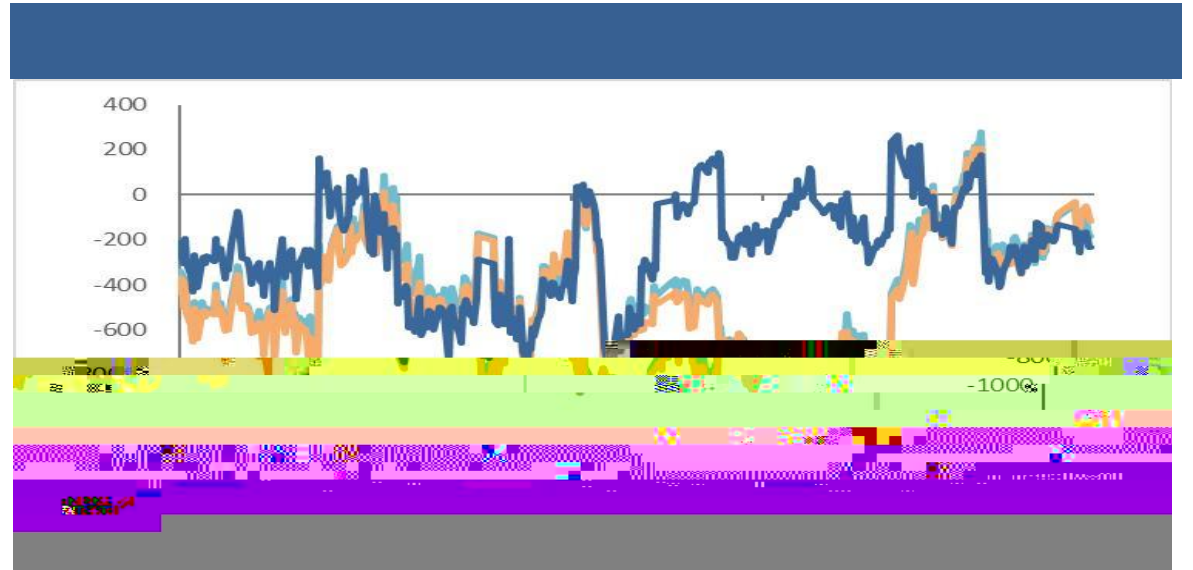
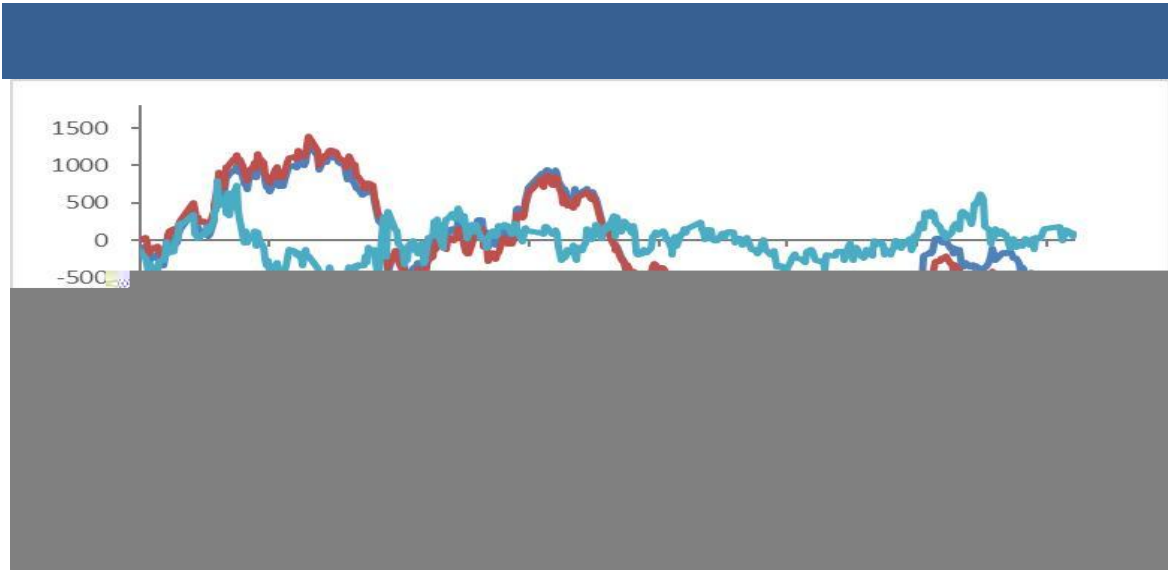












				2024															"
	"																		
	10	15			97%		95%		93%		62%		43%		60%		52%		
	52%		51%			57%		51%											
		10	15		2023/24		19%		10.1%				21.5%						
	USDA		10	12		2023/24			1,371,900		30%		92%						
										10		11							
	ITS		10	1-15			623,245		7.3%	11							8%		
						3,556.08	751.81			10	16	31						827.37	
	740.67				10			21%											
			10	11			1,560	2022/23				3,079					3,704	2021/22	
		4,155					124	2023/24			157								
						12			70%				50%						



		57 2 3006	
2 1306	105	2 04 05 06	25
			1704 1705
			2
-5 32 101 12 1211	24 1		B 906
			8
100	905		

