





SHFE

2311

10



01



02



03



04



05

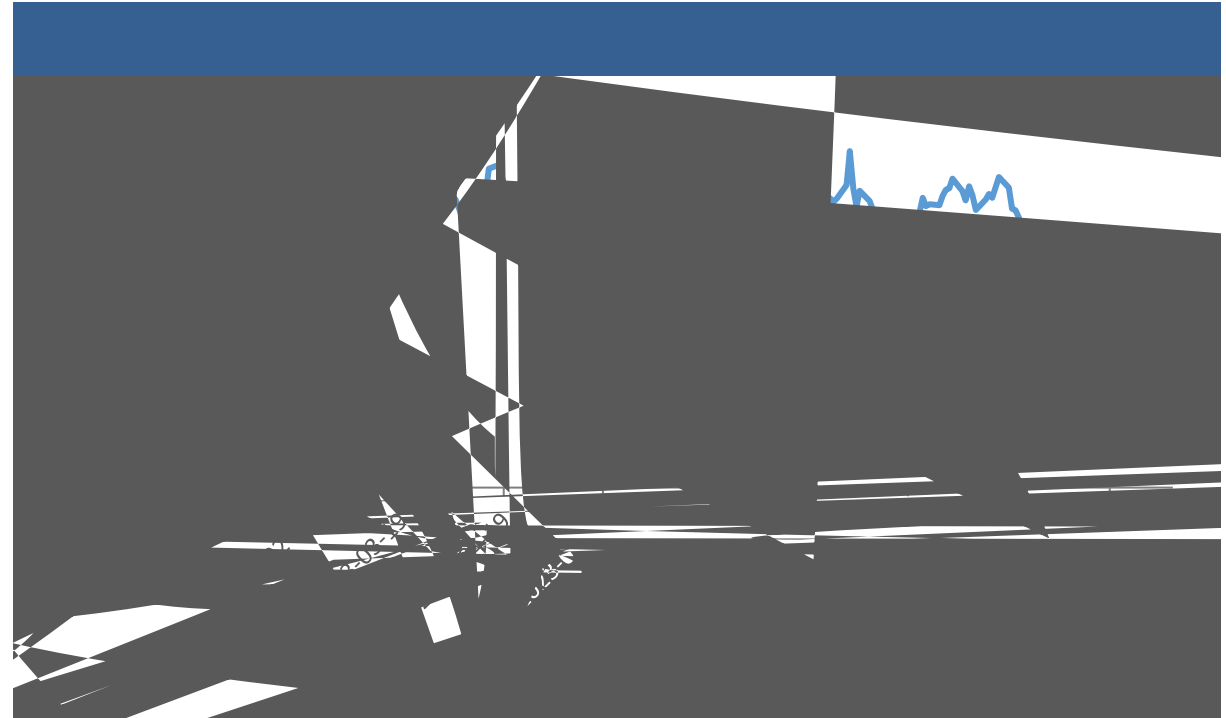


06

/



LME



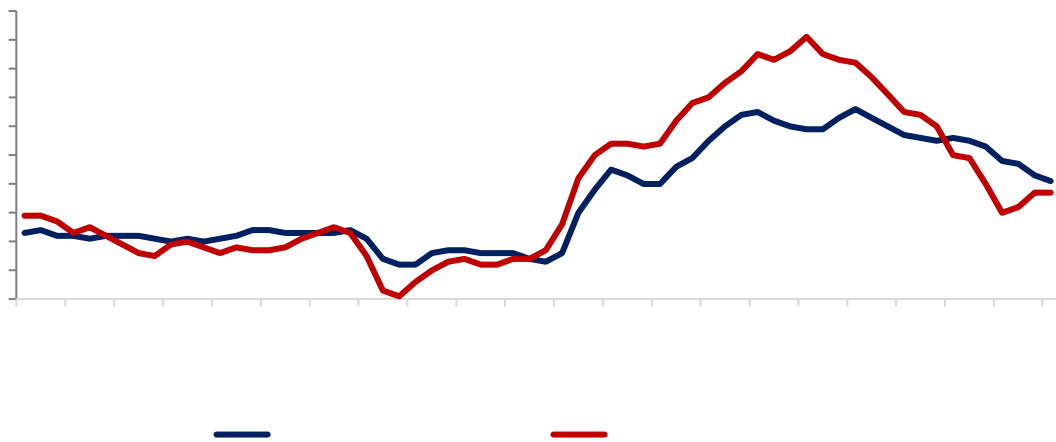
Wind

✓

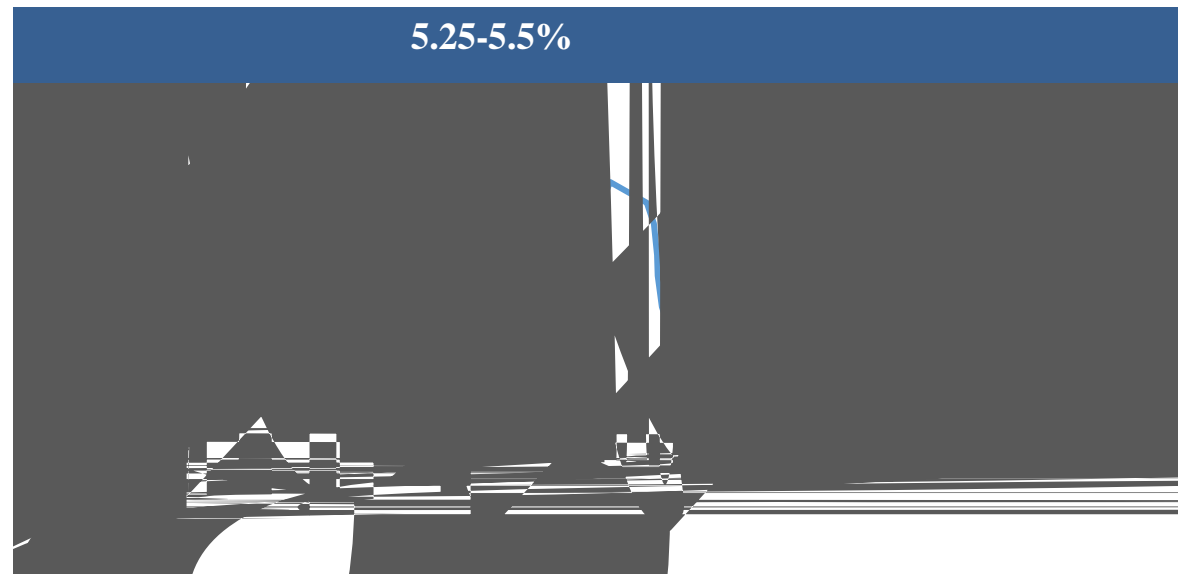
✓



9 CPI 3.7% 3.6% CPI 4.1%



10 3.9% 8 0.1%



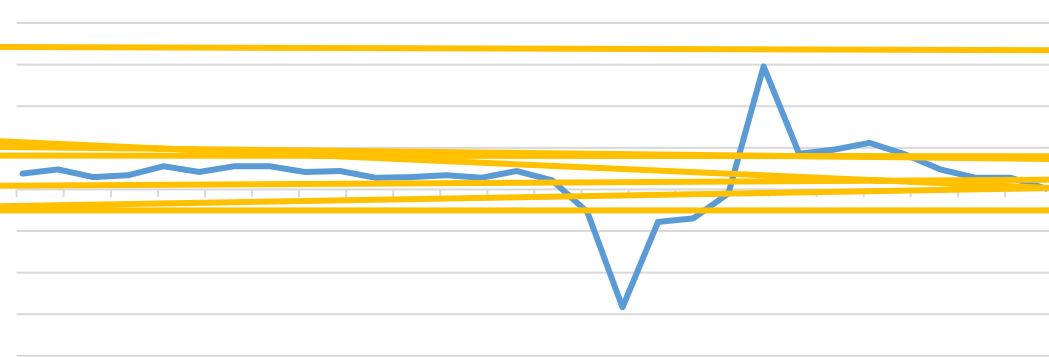
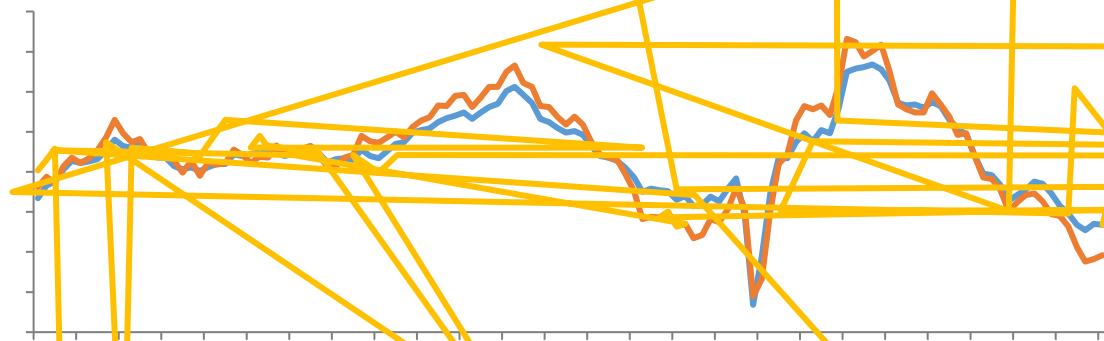
10 ISM PMI46.7

8 CPI 4.3% CPI 4.5%

4.5%

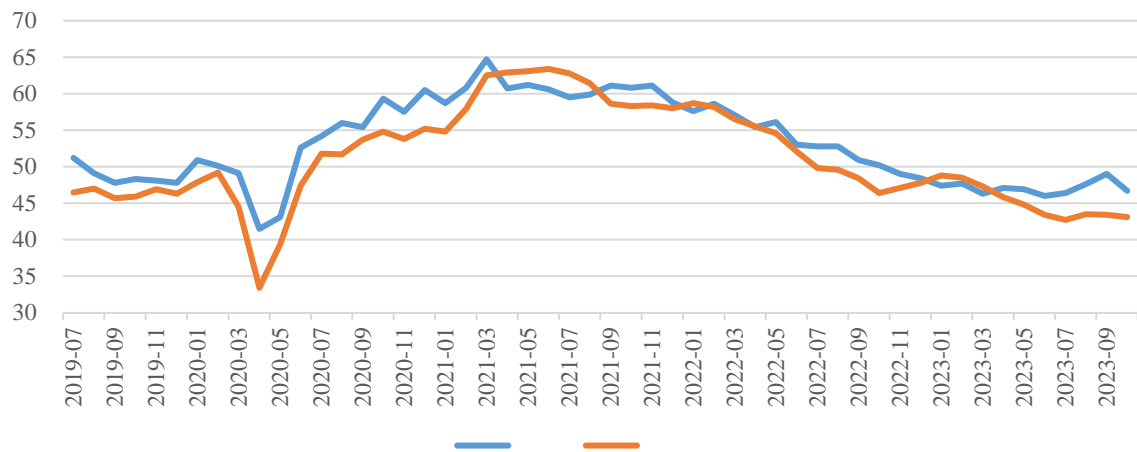
8 PMI43.4 8

GDP 0.1%





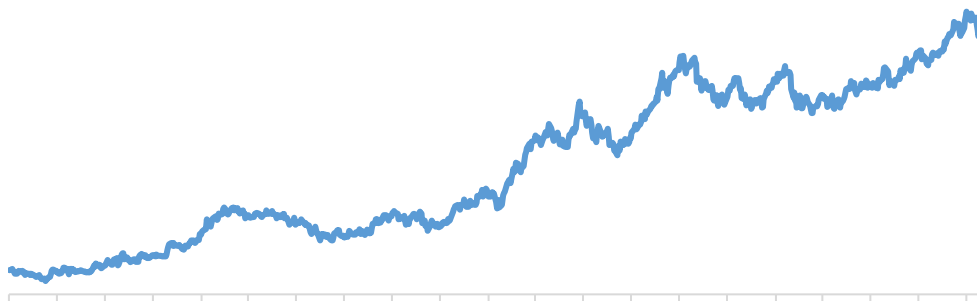
PMI



LME

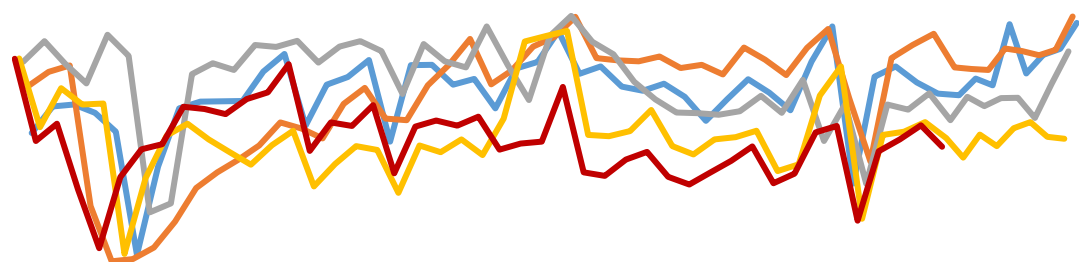


10



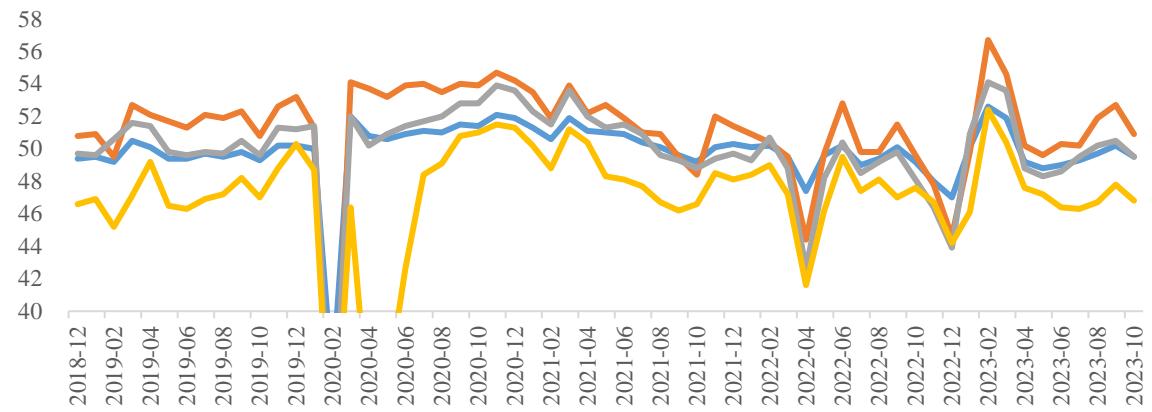
30

:



— — — — —

PMI

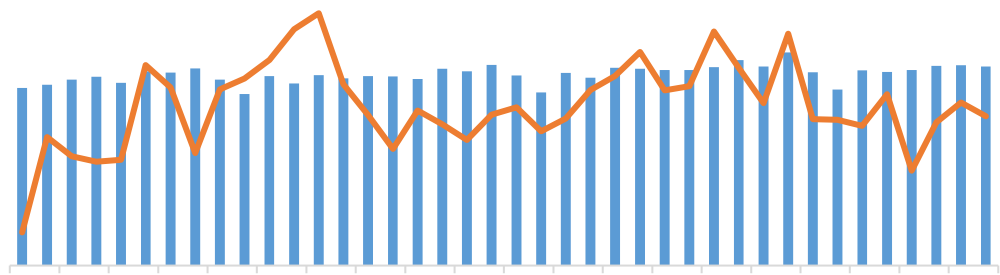


— PMI — PMI: — PMI: — PMI:



[Empty blue bar]

2023 TC 88 /



—

CSPT 95 /

[Empty blue bar]

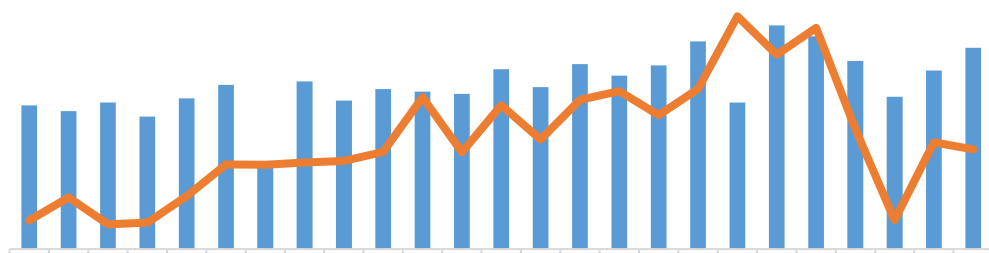
10

99.38

-1.8%

+10.3%

SMM



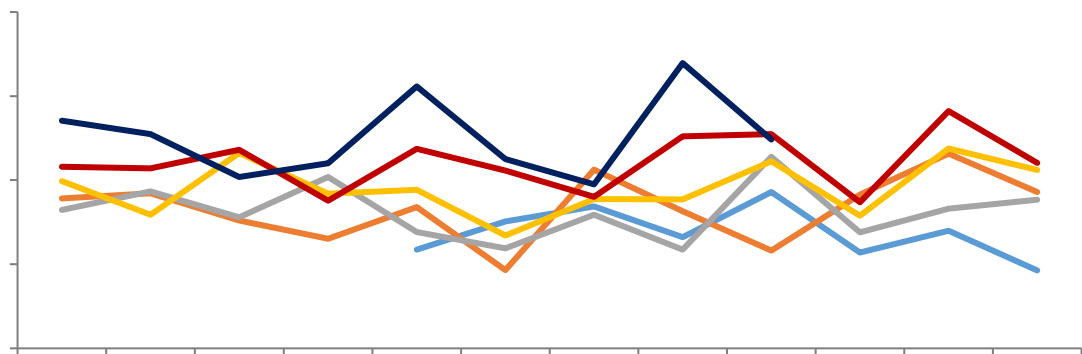
—

—





[Redacted Title]

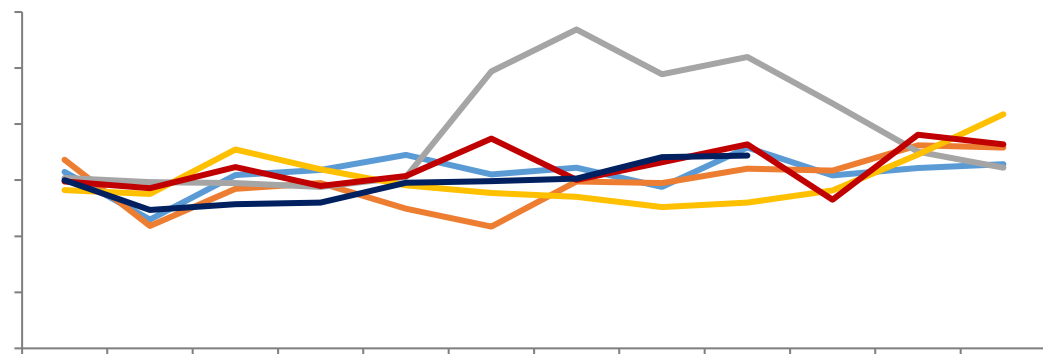


Legend for the first chart: Blue, Orange, Grey, Yellow, Red, Dark Blue

[Redacted Title]

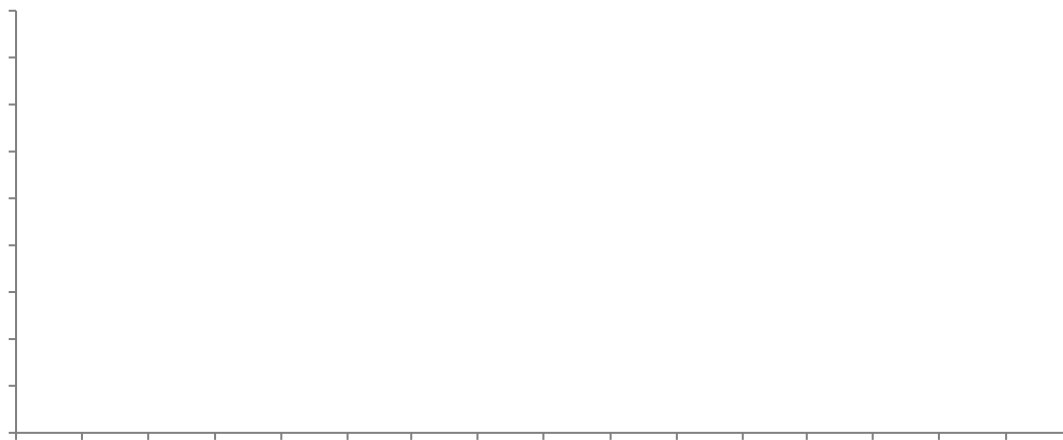


[Redacted Title]

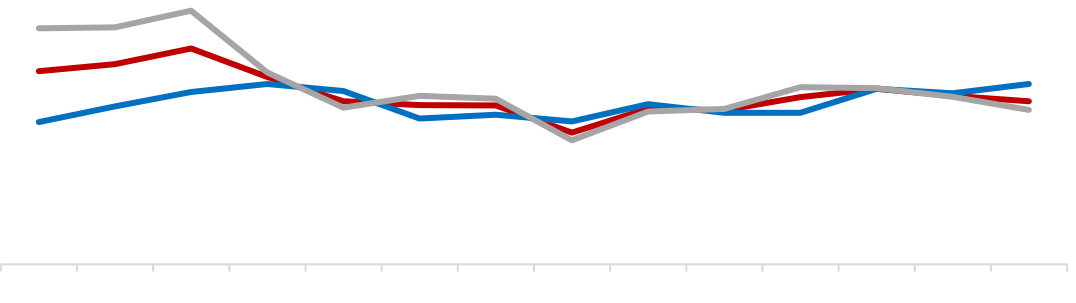
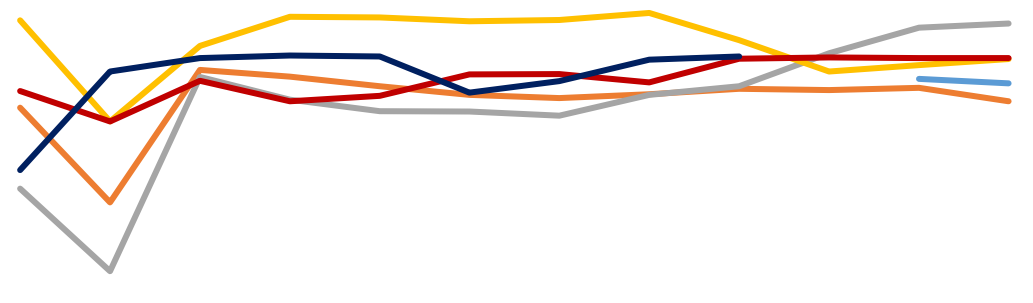
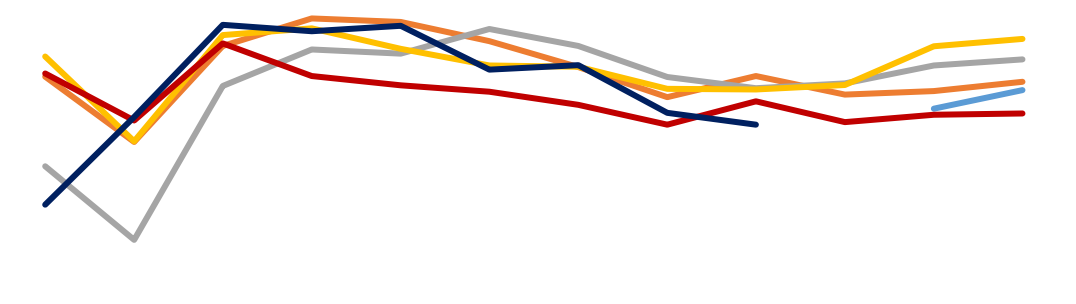
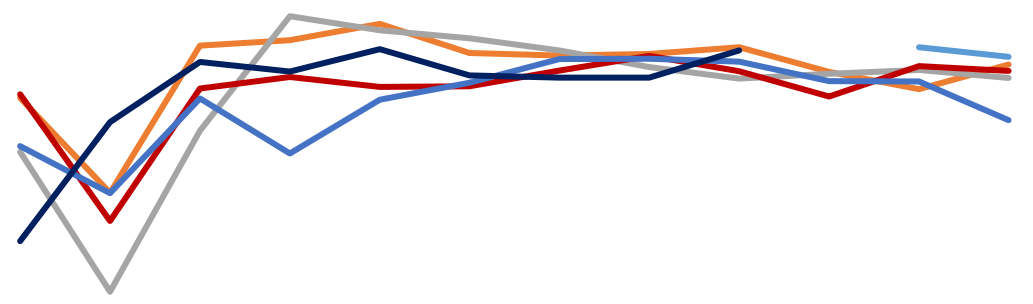


Legend for the second chart: Blue, Orange, Grey, Yellow, Red, Dark Blue

[Redacted Title]

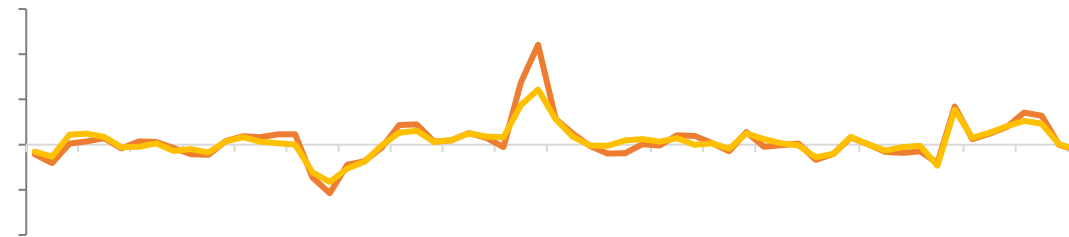
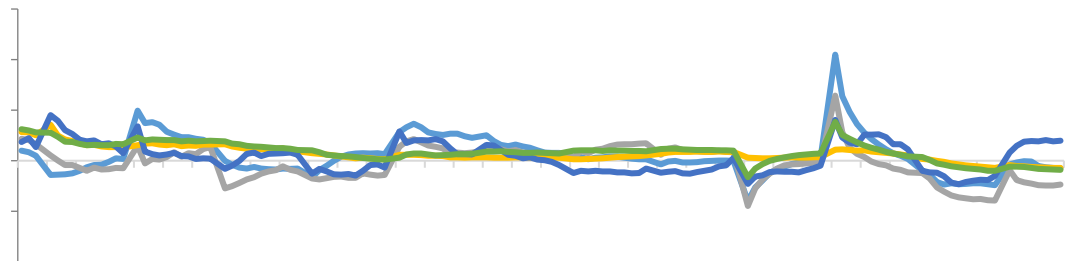






Blue header bar

Blue header bar

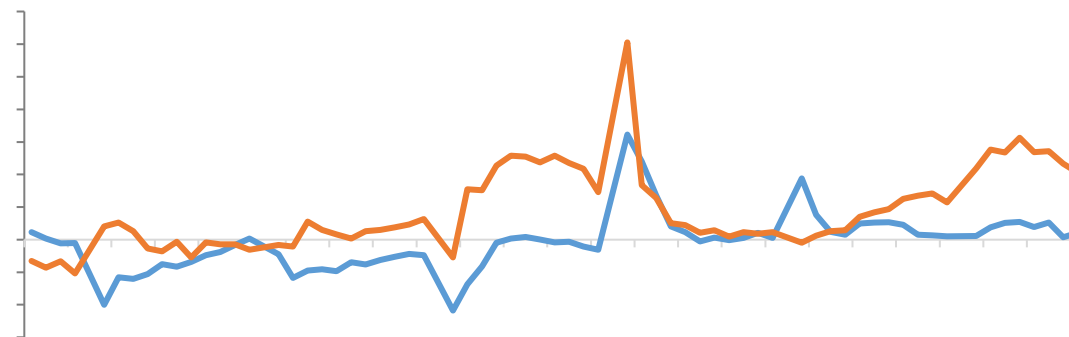
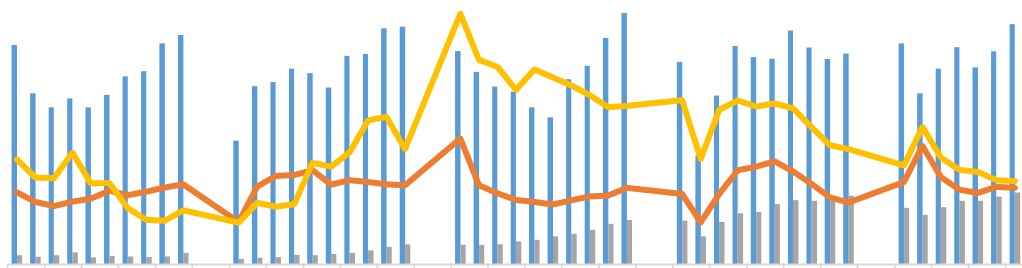


Legend for top-left chart: Blue line, Yellow line, Green line, Blue line, Grey line.

Legend for top-right chart: Orange line, Yellow line.

Blue header bar

Blue header bar



Legend for bottom-left chart: Blue bar, Orange line, Grey bar, Yellow line.

Legend for bottom-right chart: Blue line, Orange line.

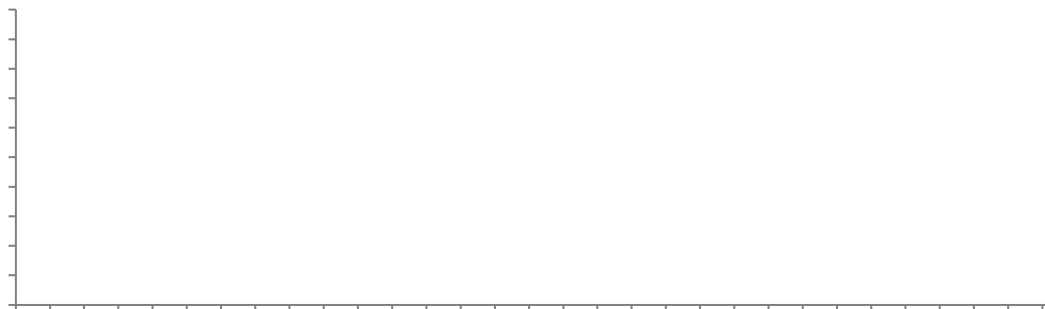


# LME

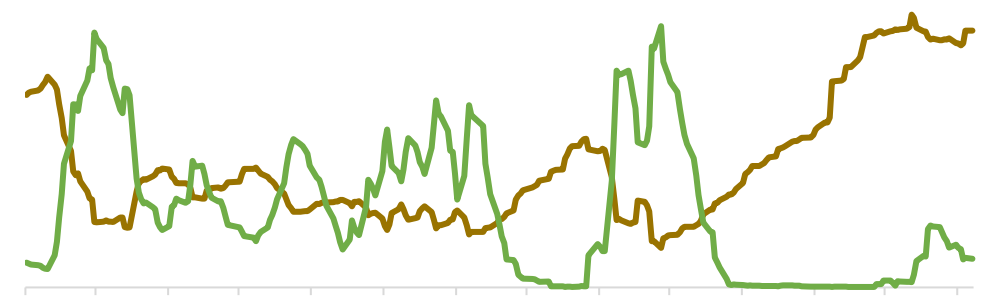
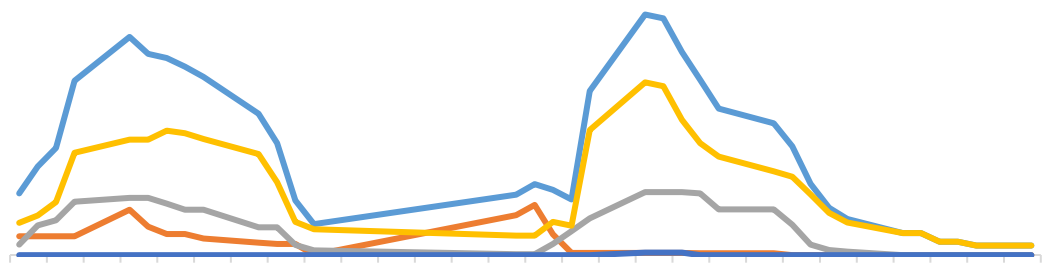
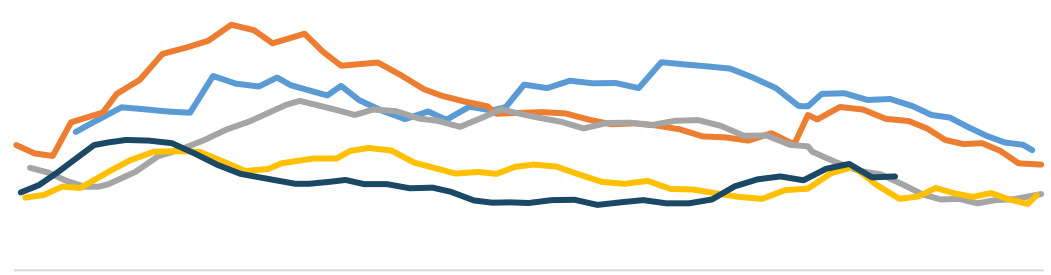
SHFE

LME

COMEX



# LME



2022-09-28  
2022-10-28

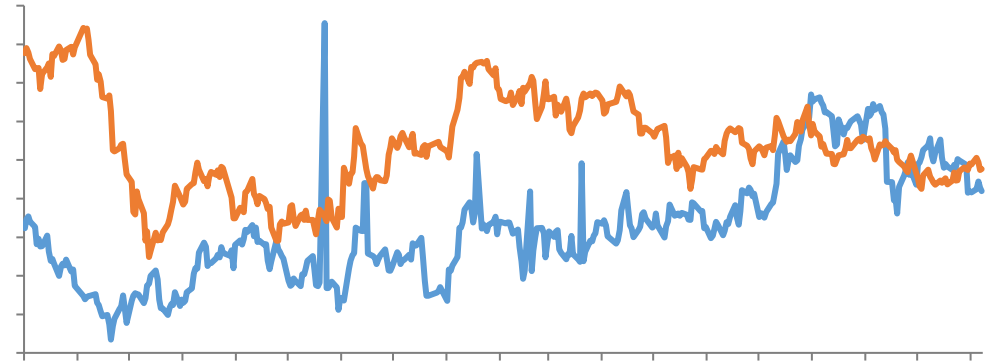




# CFTC

CFTC

LME



Wind





/

➤ 10 CPI 0.2% 10 PPI 2.6%

➤ 2024

➤ 10 PMI 47.8%

“ ”

2012 1497

F3022666 Z0013612 020-22836081 xuky@gzf2010.com.cn

021- 68905325 12 15 03 69 1	0571-89809624 2 1301 111	028-83279757 12 6 802 4	021-50568018 899 1201- 1202
0757-88772666 28 2 2301 2302	0755-83533302 A 704A 705	0757-88772888	0769-22900598 1501B 2
020-31953184	0763-3808515	0758-2270761	020-61887585 8 803B 171
010-63360528	027-59219121 A 14 1401-9 193	0531-66671202	0371-86533821 80 1 2 23 2301
0532-88697833	020-22836158 6 1	020-22836155 6 1	020-22836182 6 1
020-22836185 6 1	021-50390265 388 701		

