





TC



 01

 02

 03

 04

 05

 06

/



LME



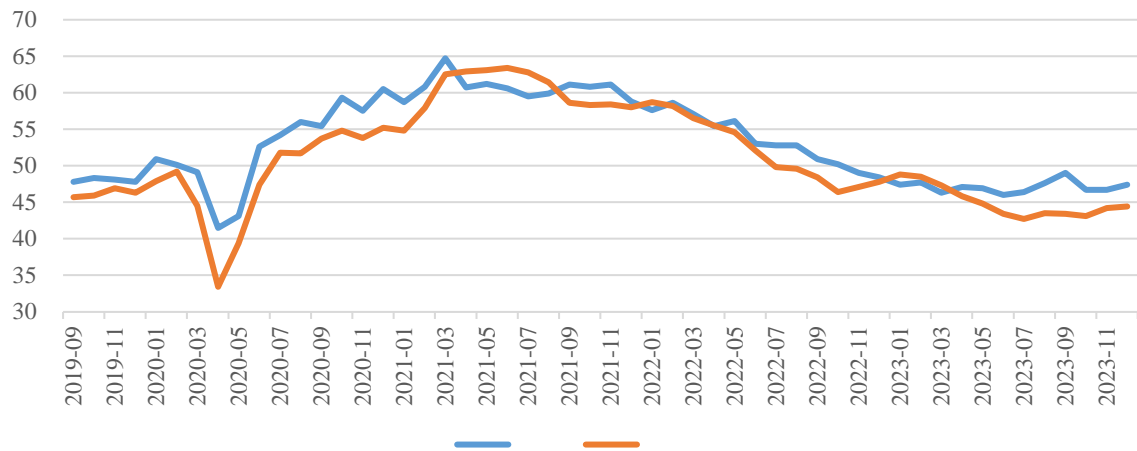
11 CPI 0.1% CPI 1.0%

5.25-5.5%

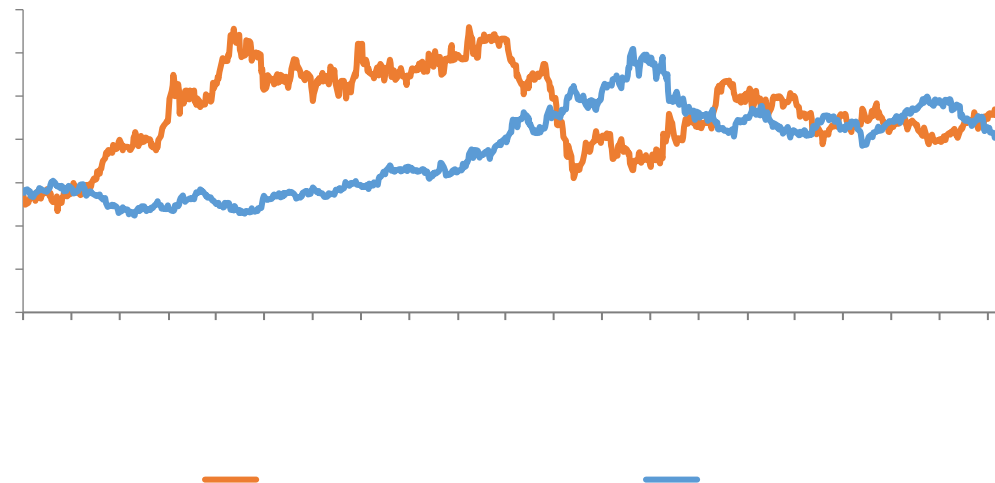
11 3.7% 10 0.2%

11 ISM PMI46.7 10

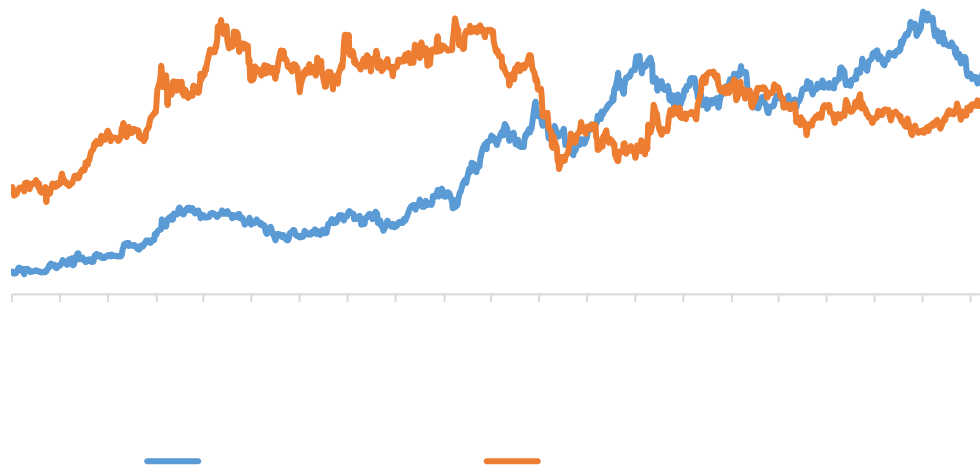
PMI



LME



10



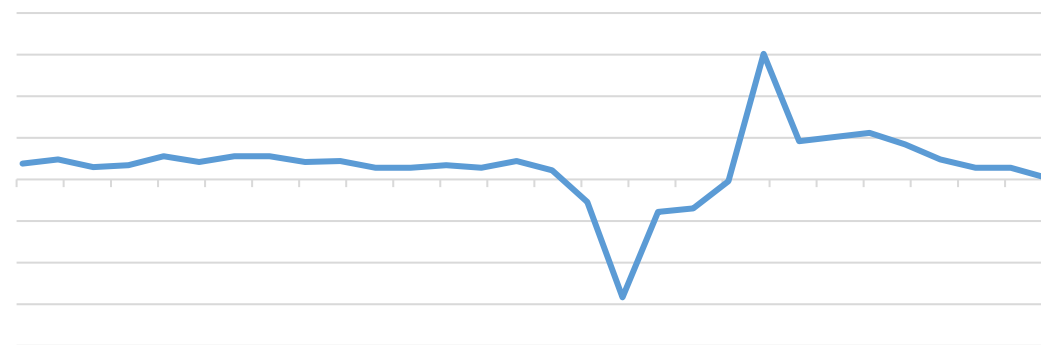
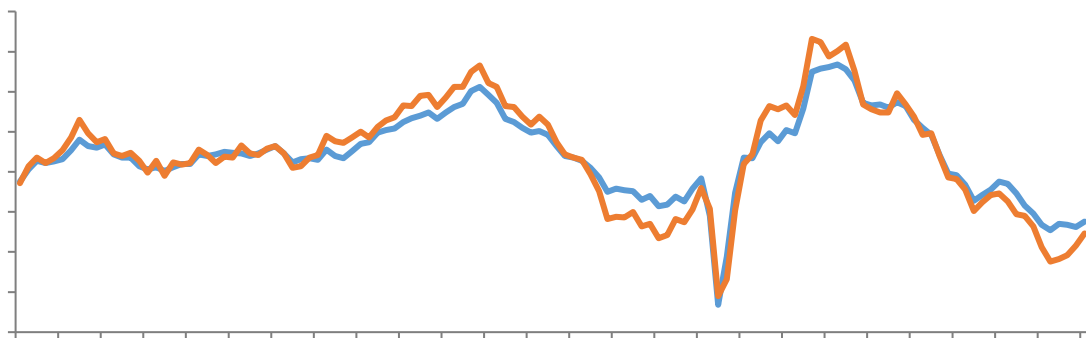
11 CPI

11 CPI 2.4% CPI 3.6%

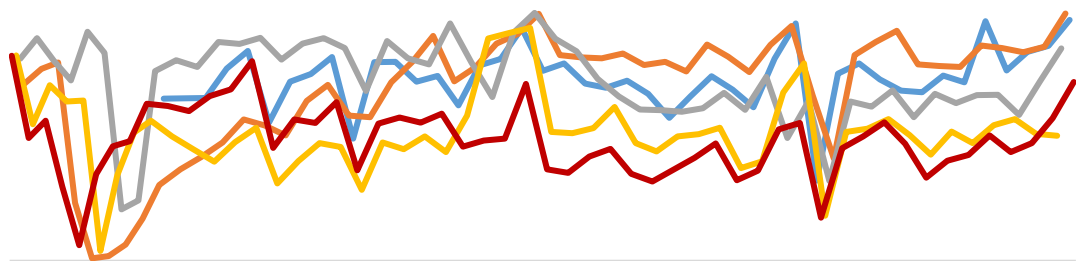
4.5%

12 PMI44.4

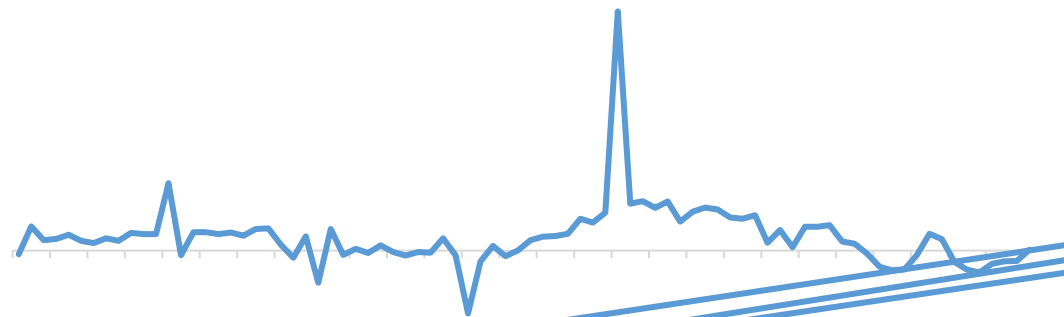
GDP 0%



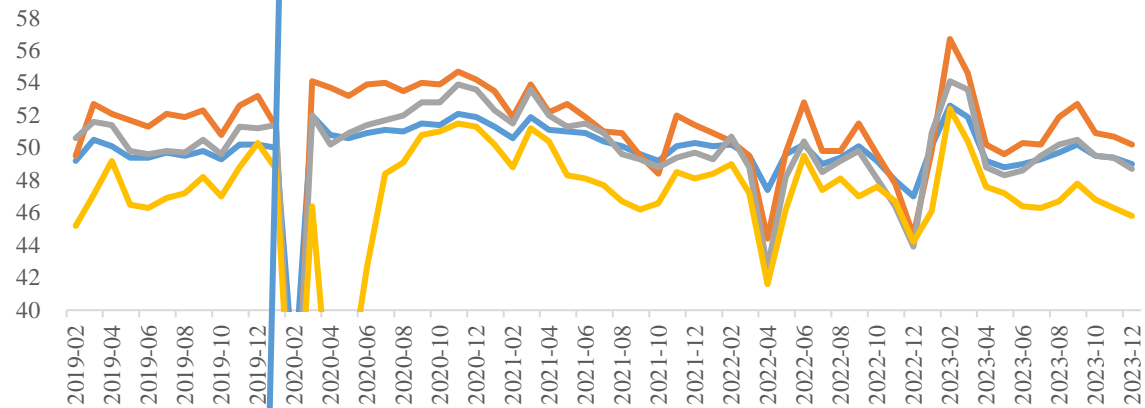
30 : :



— — — — —



PMI



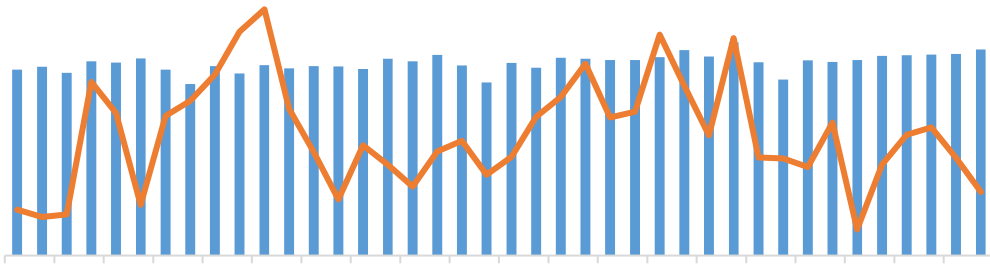
— PMI — PMI: — PMI: — PMI:





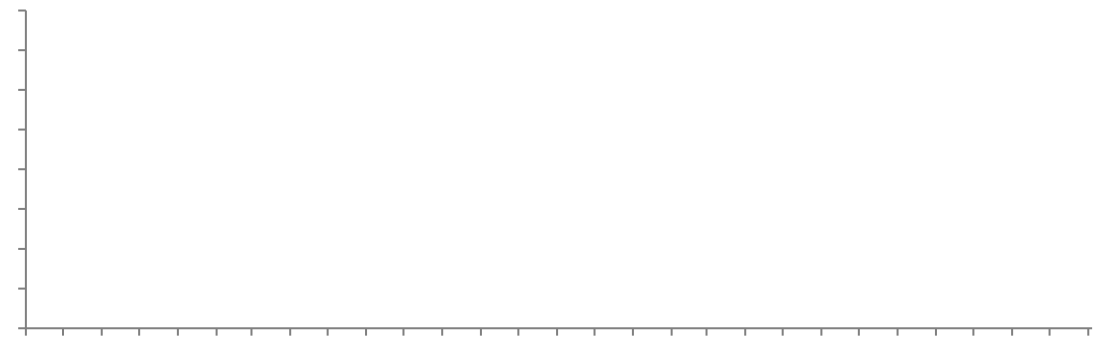
[Blank dark blue bar]

2024 TC 80 /



CSPT 95 /

[Blank dark blue bar]

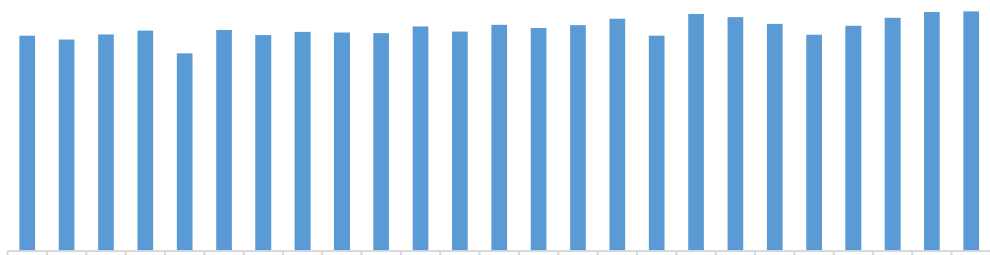


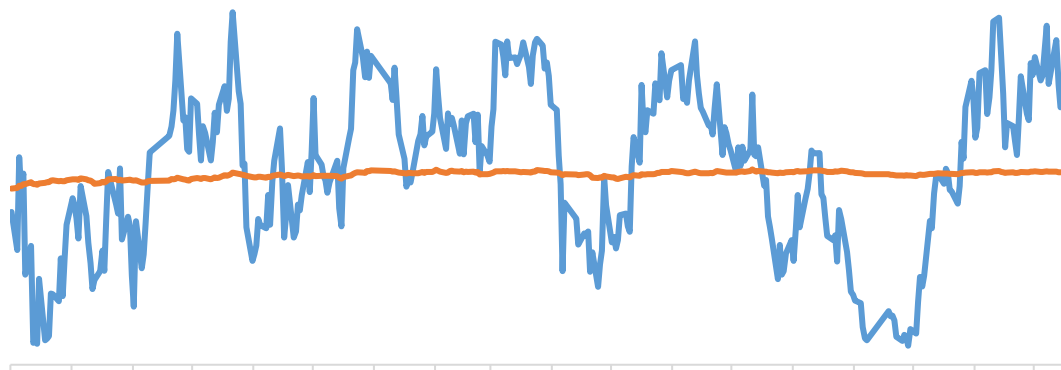
11

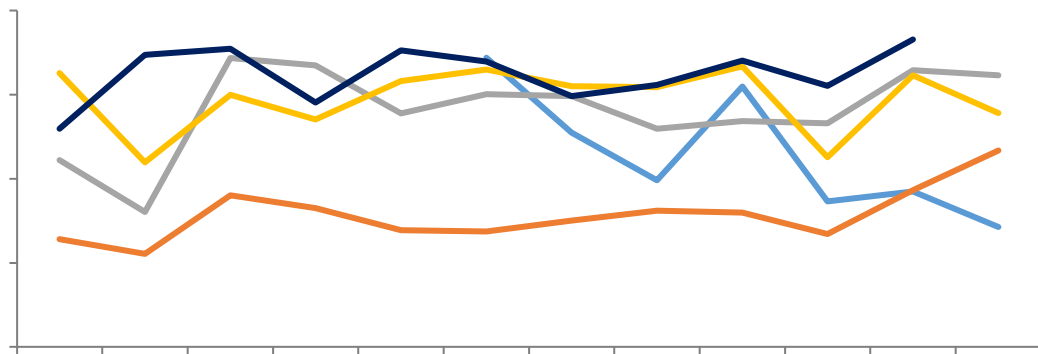
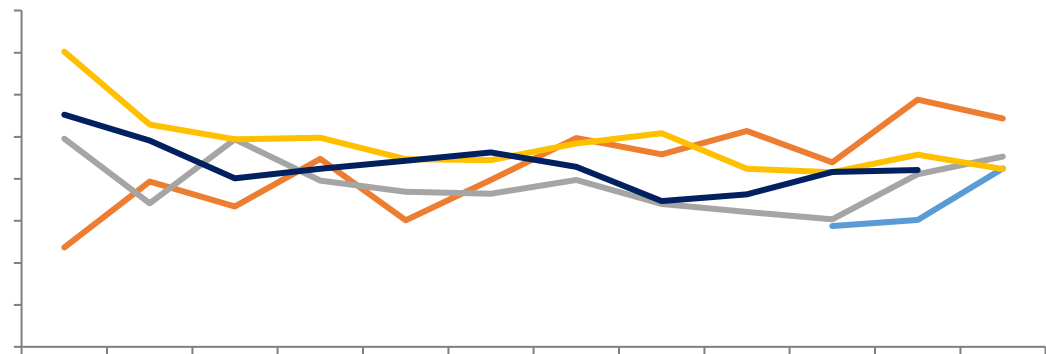
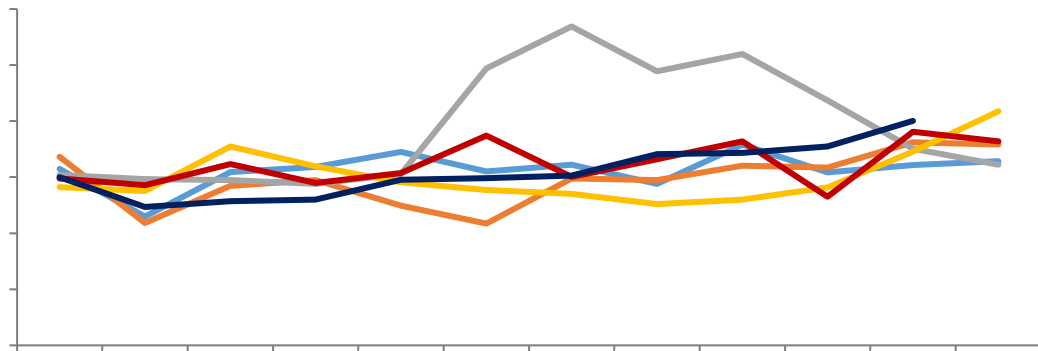
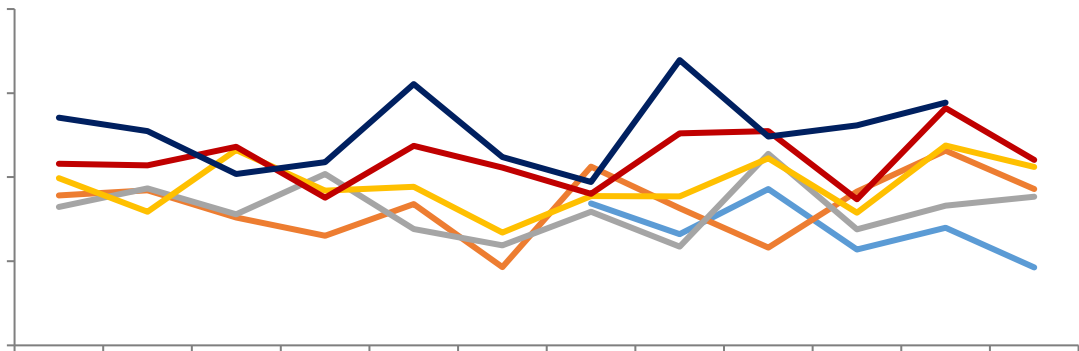
96.08

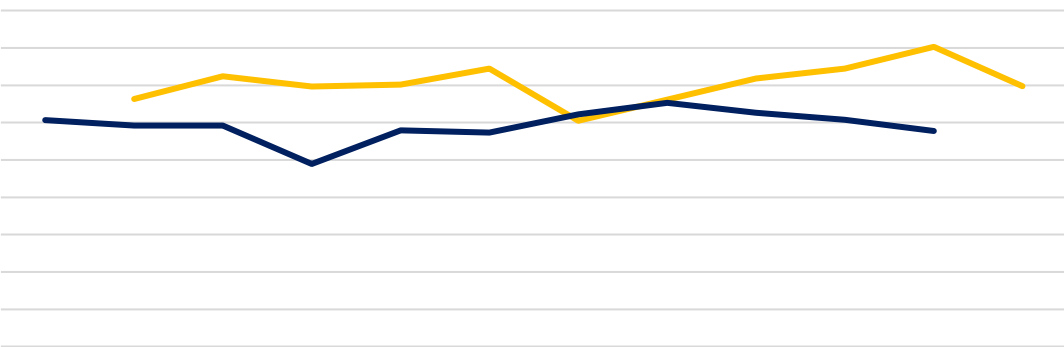
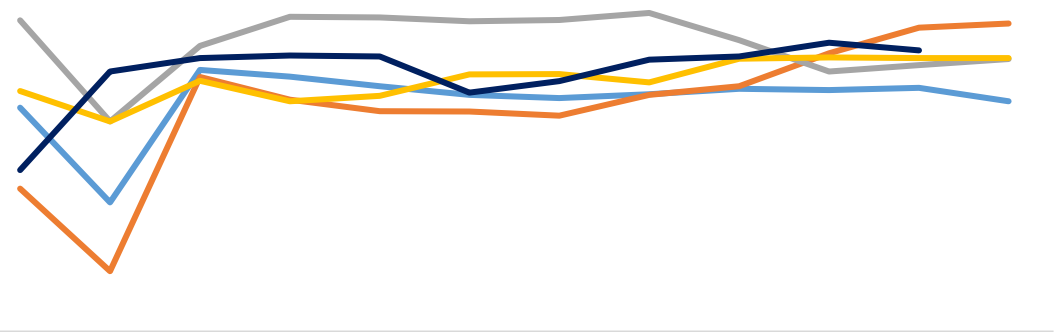
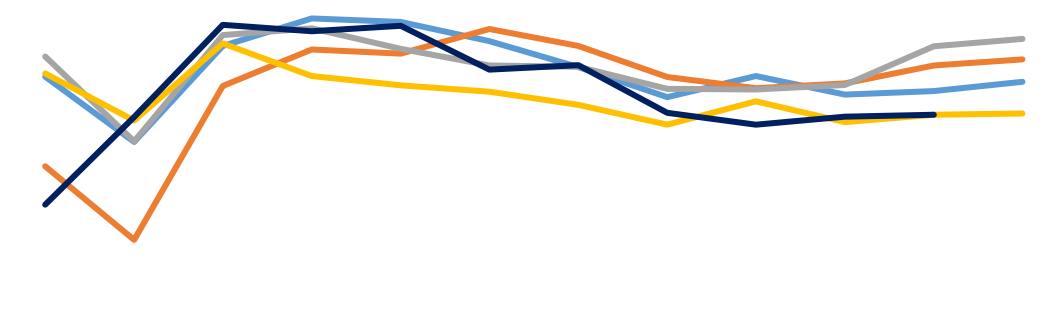
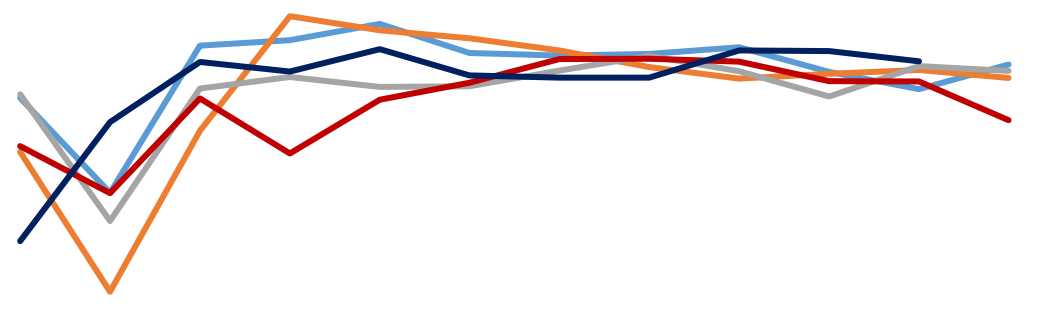
-3.3%

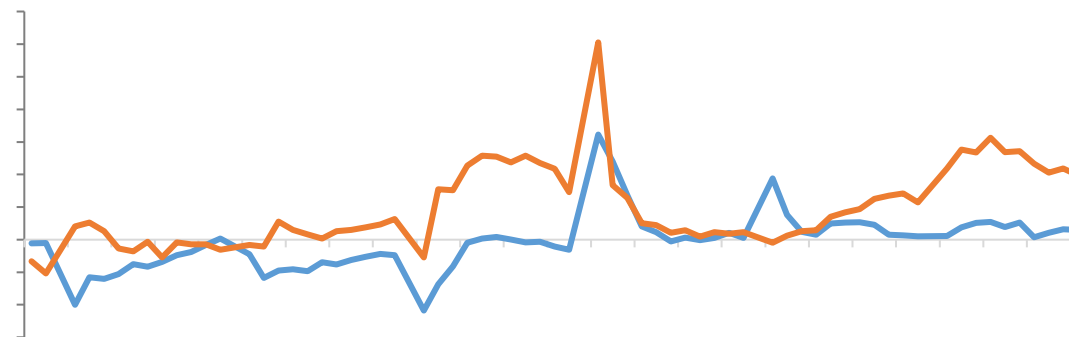
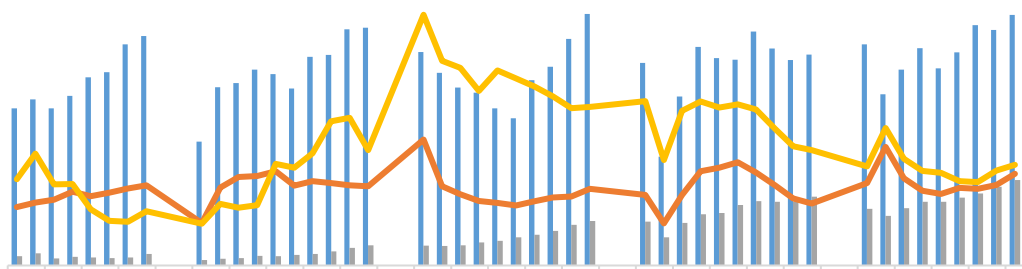
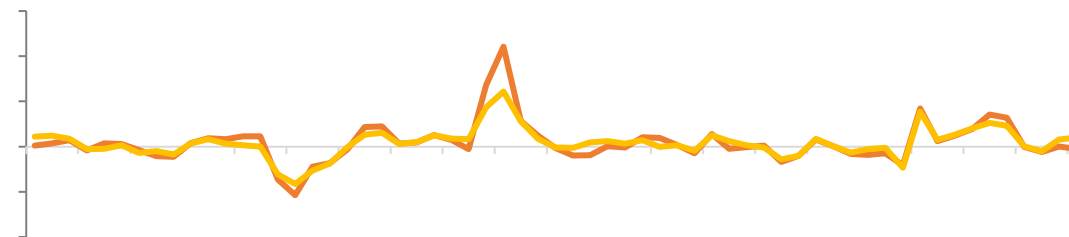
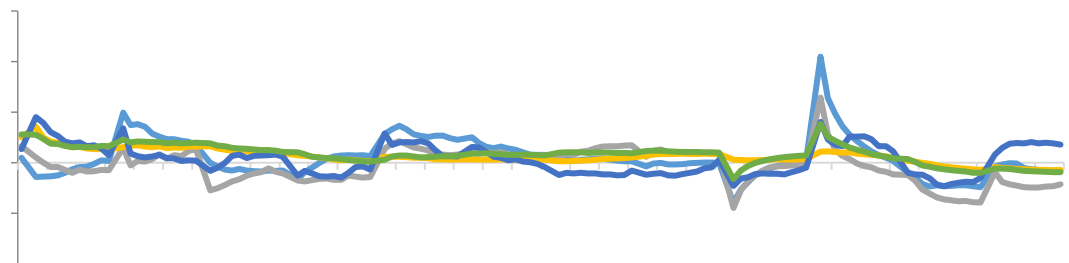
+6.8%











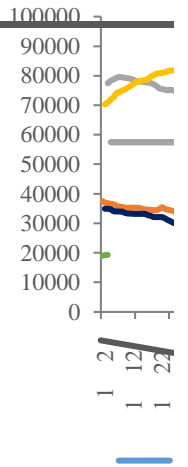


LME

SHFE

LME

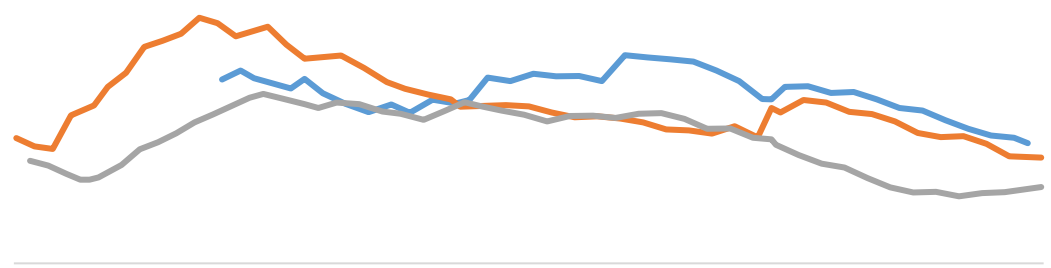
COMEX



LME

[Redacted]

SHFE



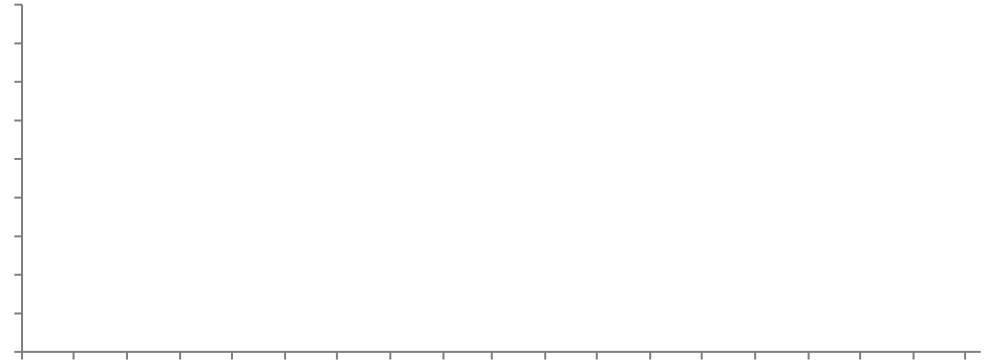
LME



CFTC

CFTC

LME



Wind



/

➤ 2024 2023 2.7% 2024 2.4%

➤ 11

➤ 12 21.6

➤ 12

“ ”

2012 1497

F3022666 Z0013612 020-22836081 xuky@gzf2010.com.cn

