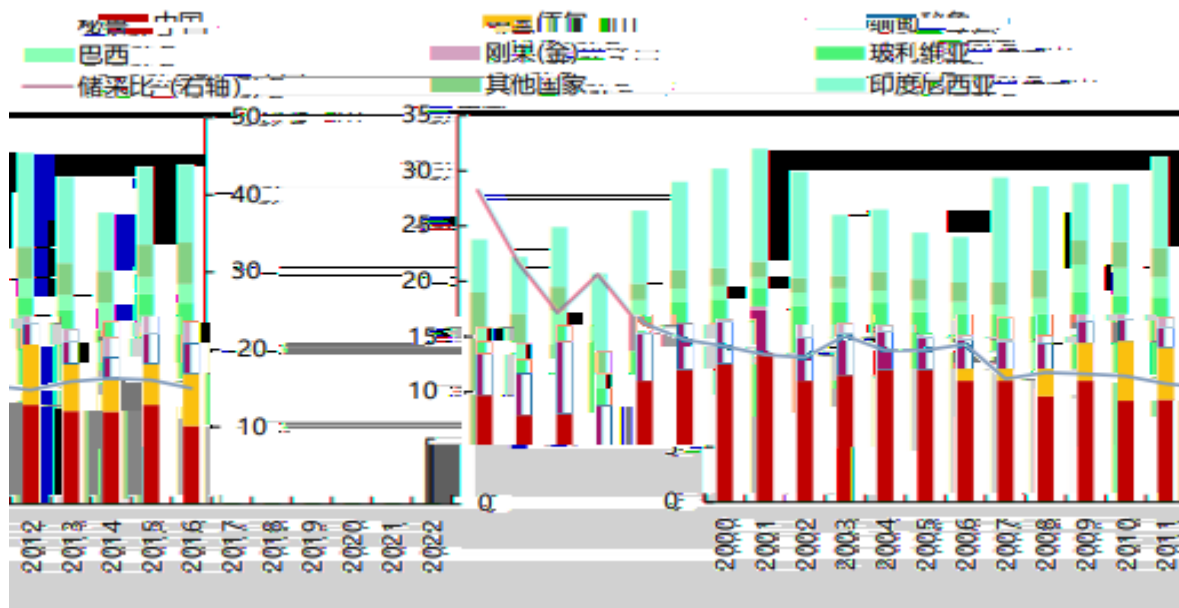
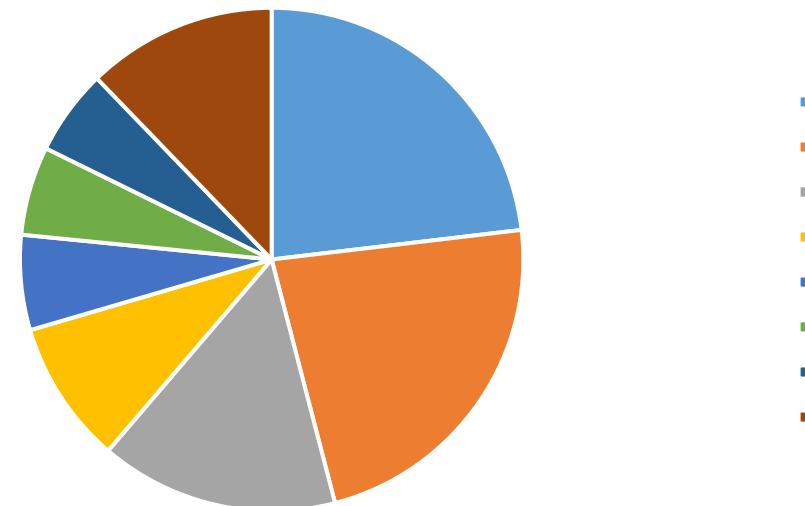




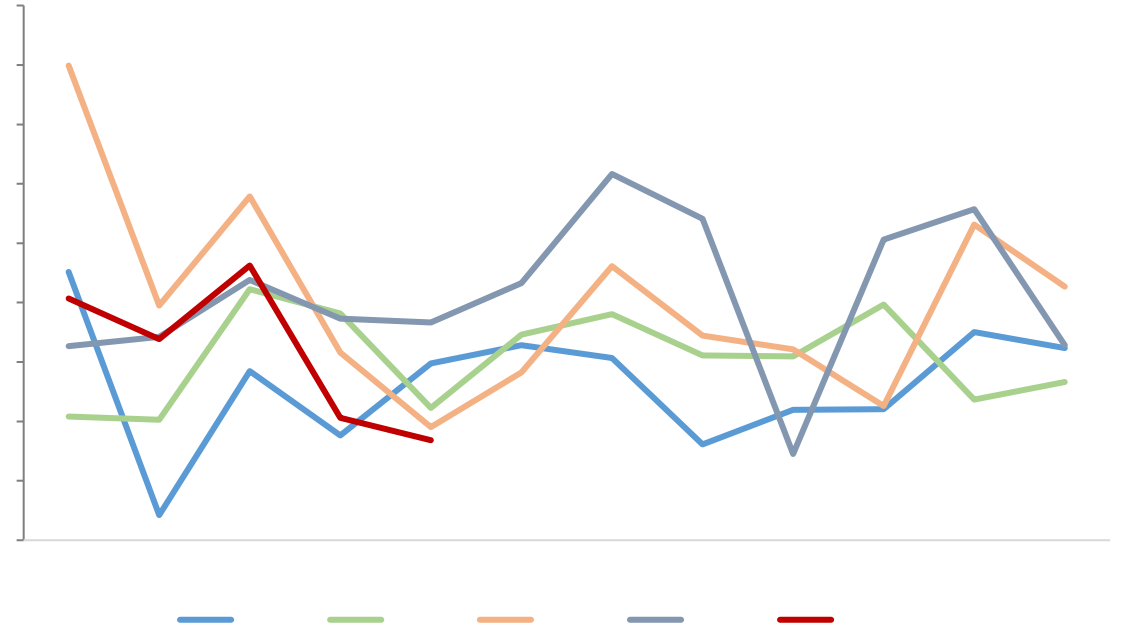
30



2022



- ✓
- ✓
- ✓

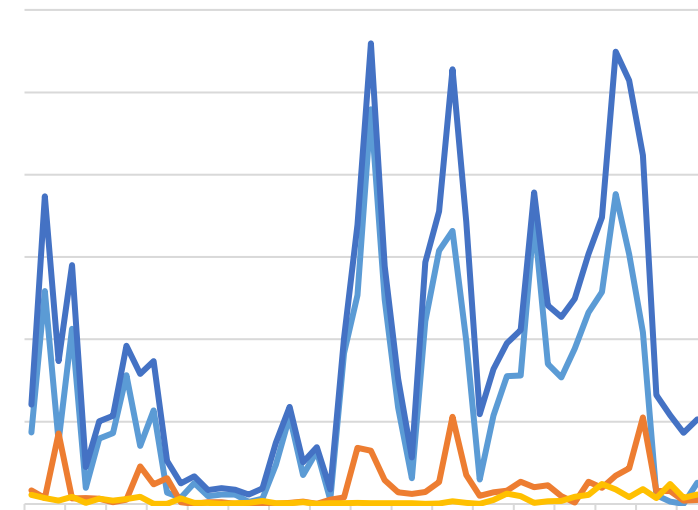
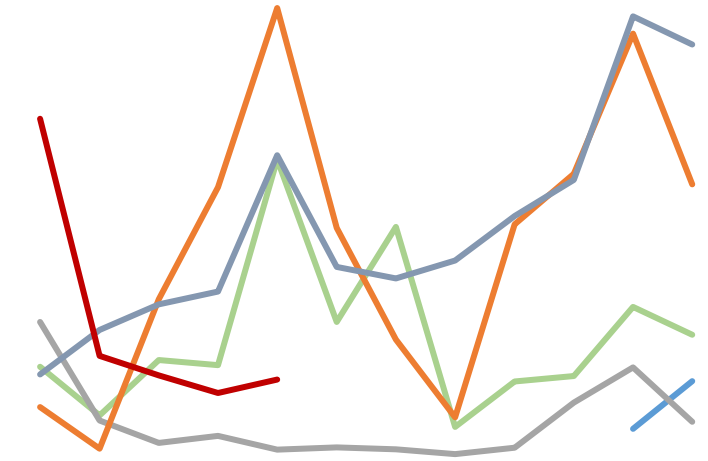
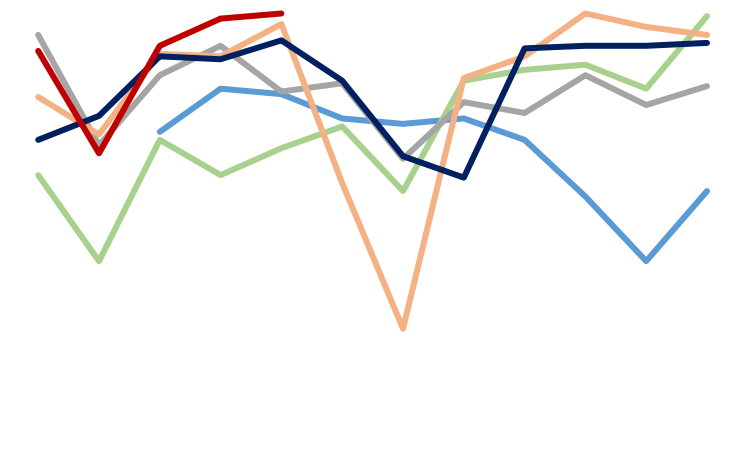


[Redacted]

2023

:

:

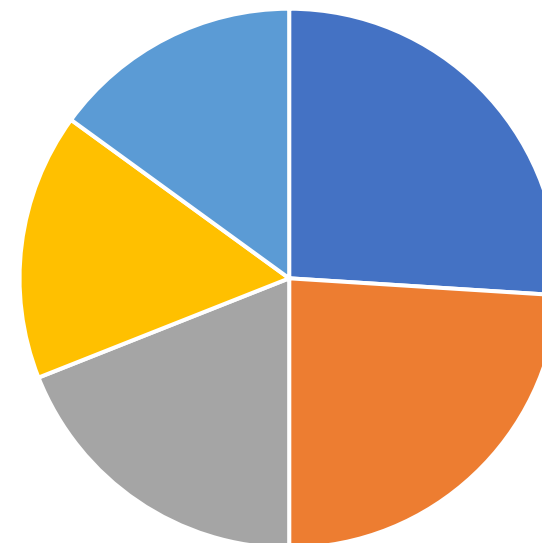
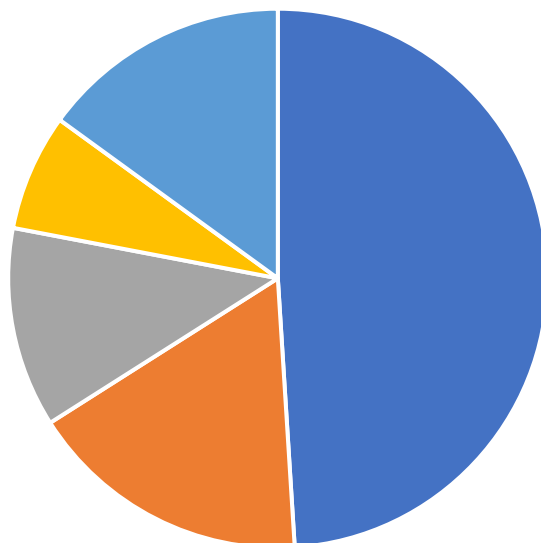
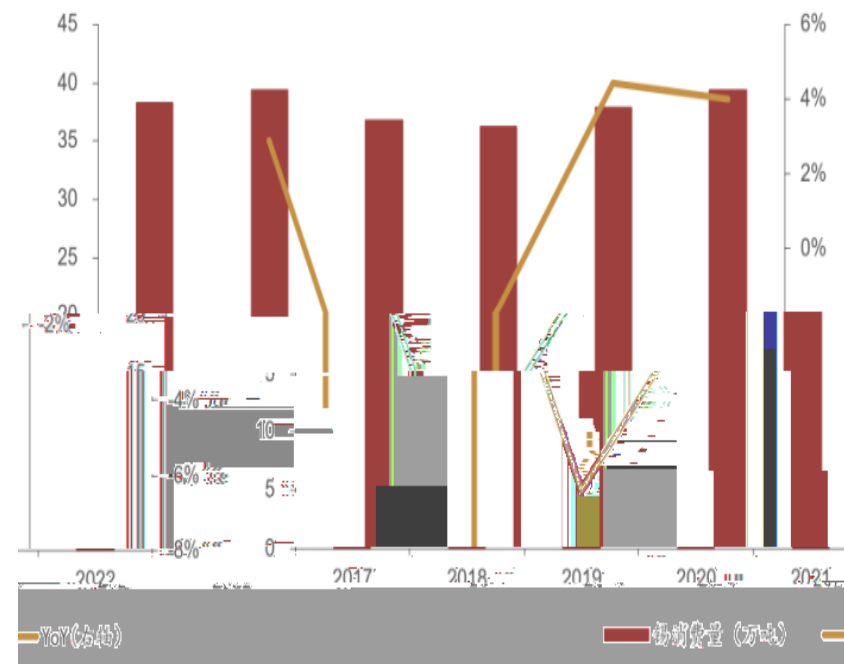


✓

✓

✓

2022

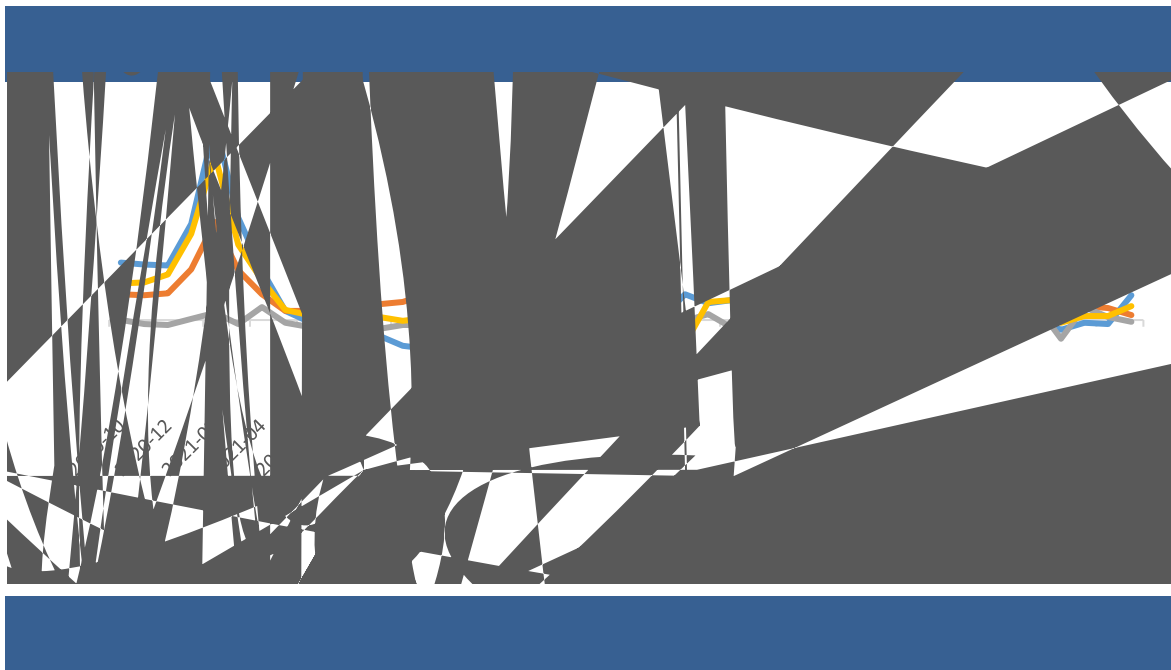


慧博资讯 广州期货研究中心

✓

✓

26% 24% 19% 16%



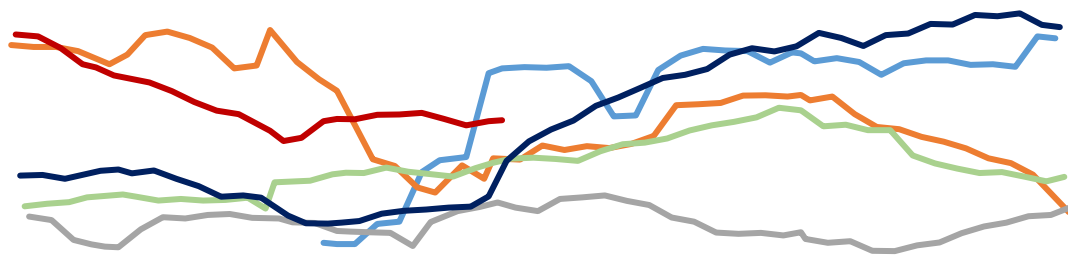
:

:

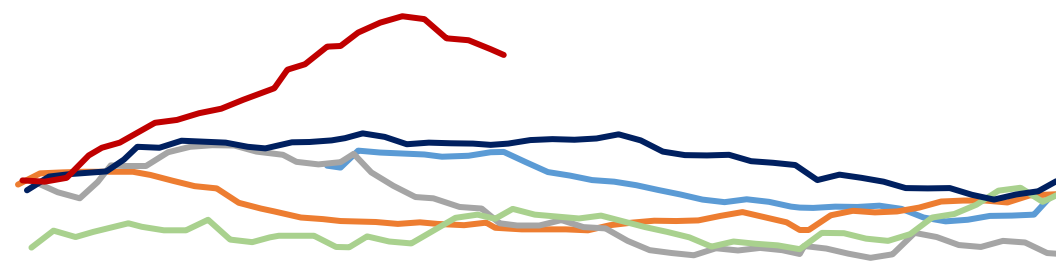
LME



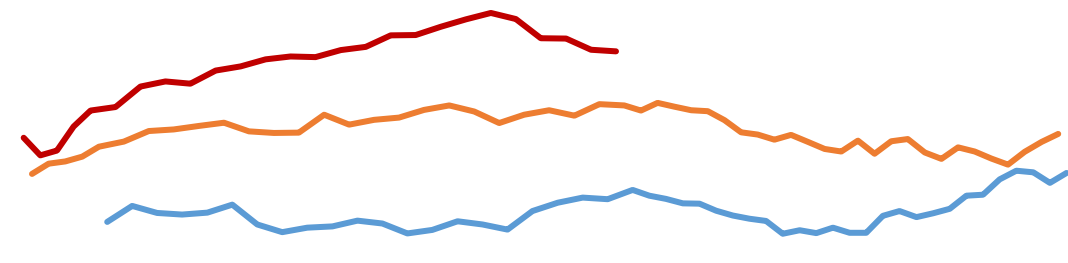
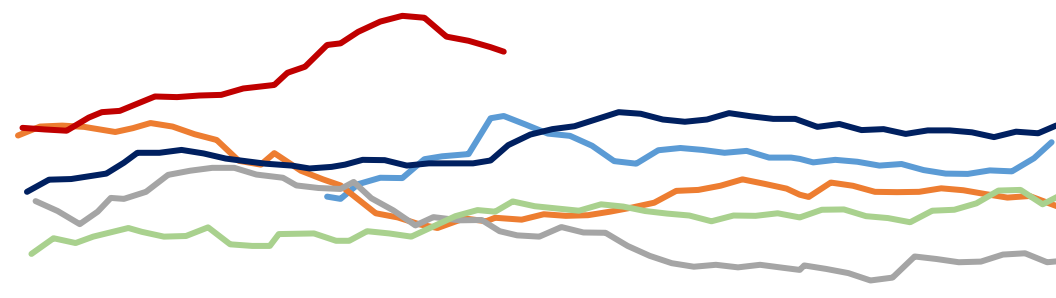
LME



SHFE



LME+SHFE



LME

LME

LME

/

- 6
- 6 PMI 51.2 2023 11
- 6 PMI 51.8 2021 6
- ISM
- 6 4.1%

“ ”

2012 1497

F3022666 Z0013612 020-22836081 xuky@gzf2010.com.cn

021-68905325 388 69 1 12 15 03	0571-89809624 111 2 1301	0757-88772666 28 2 2302	0755-83533302 A 704A 705
0757-83607028 57 2 3006	0769-22900598 2 1501B	0763-3808515 25 2 04 05 06	0758-2270761 2 1704 1705
010-63360528 24 1 5 - 32 101 12 1211	027-59219121 193 A 14 1401-9	0371-86533821 80 1 2 23 2301	0532-88910060 100 905
028-83279757 4 12 6 802	020-22836158 1 6	020-22836155 1 6	020-22836182 1 6
020-22836185 1 6	020-22836187 1 6	021-50390172 388 22 2201	



广州期货股份有限公司