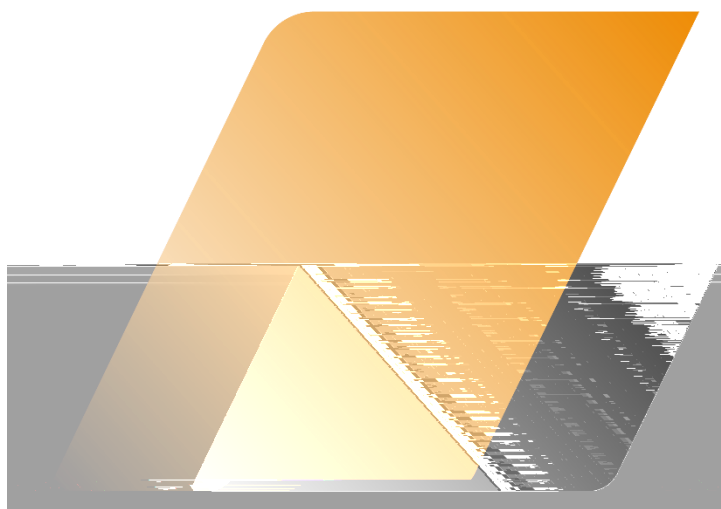


8







 01

 02

 03

 04

 05

 06



LME



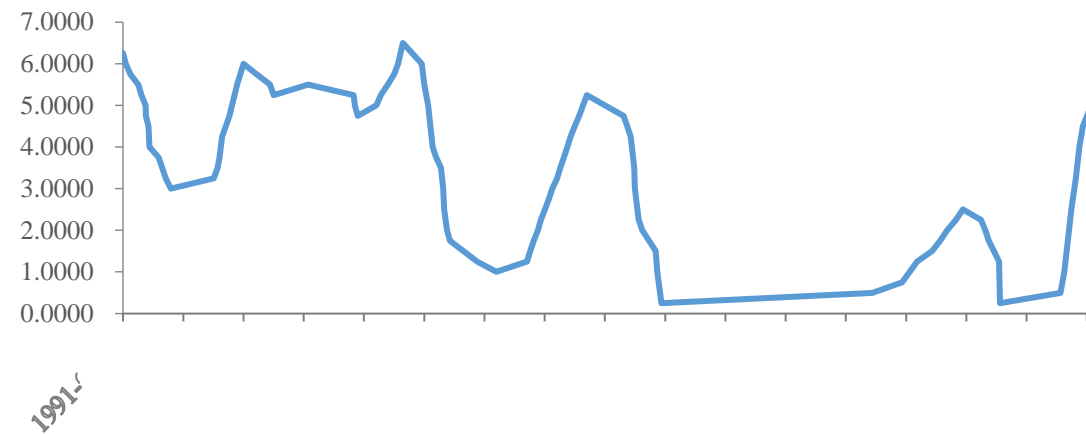
Wind

业

✓

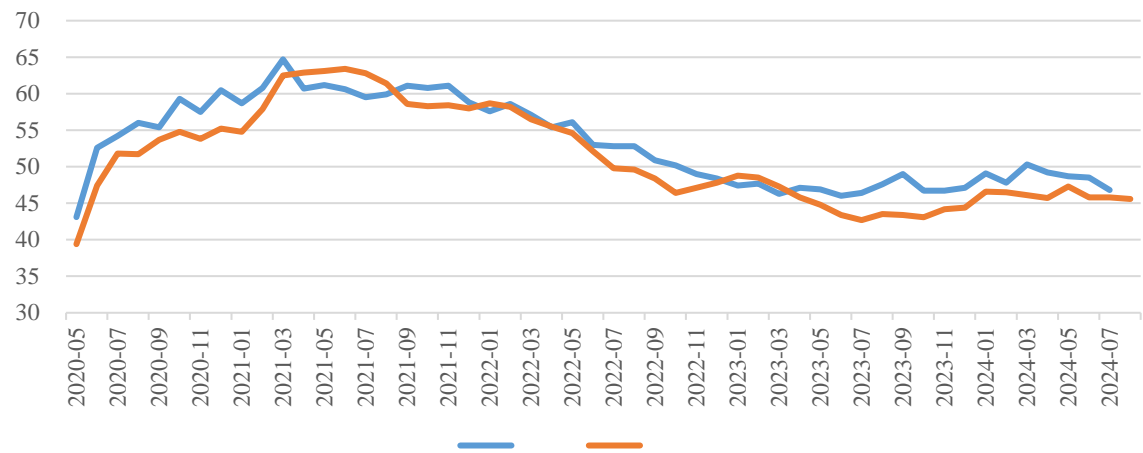
✓



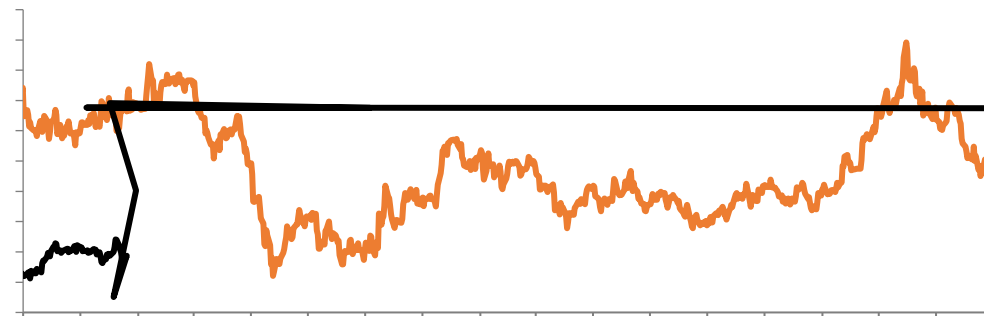


ISM

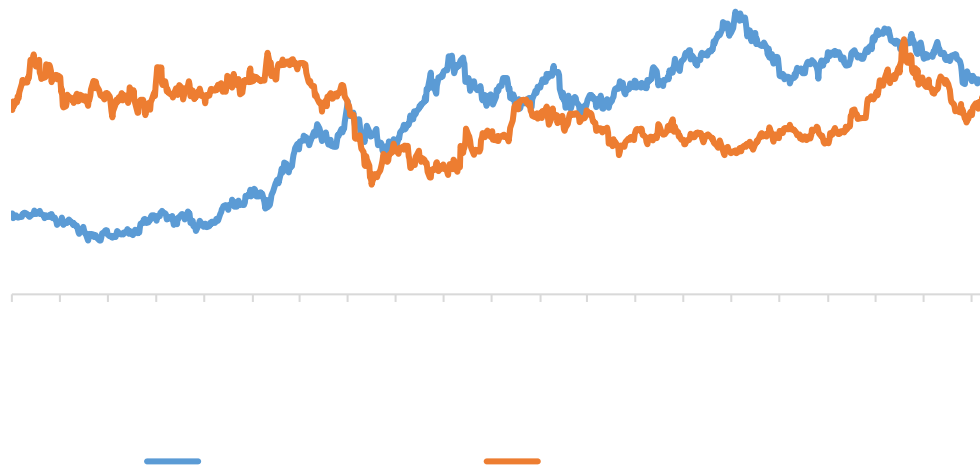
PMI

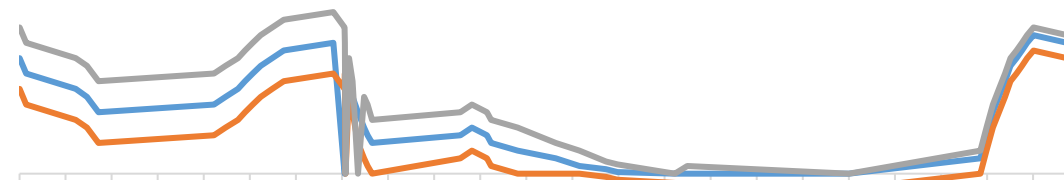


LME

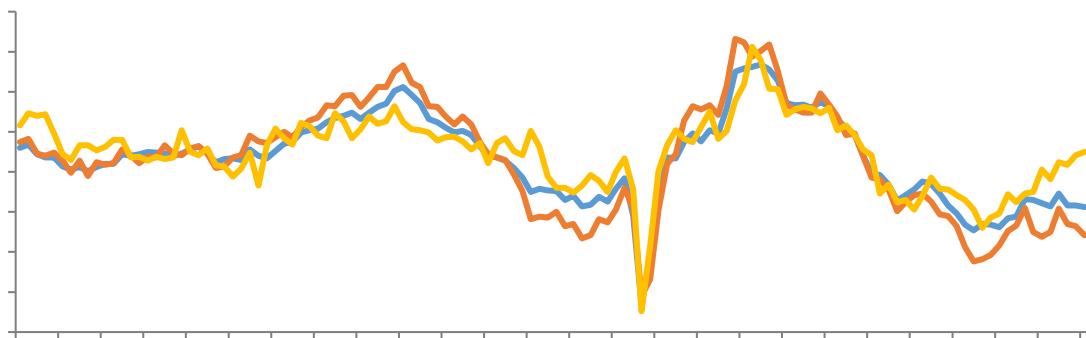


10

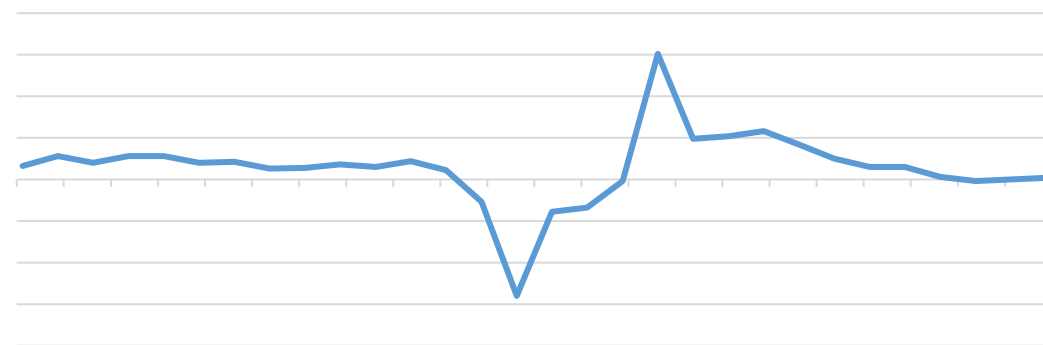




PMI

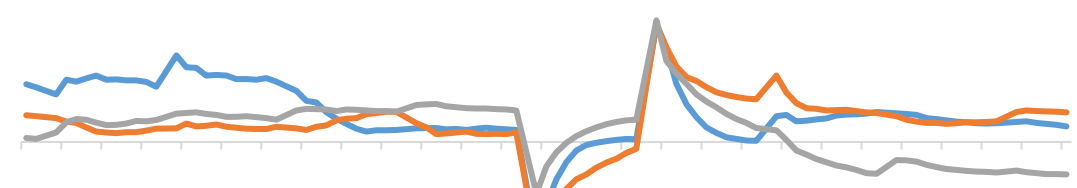
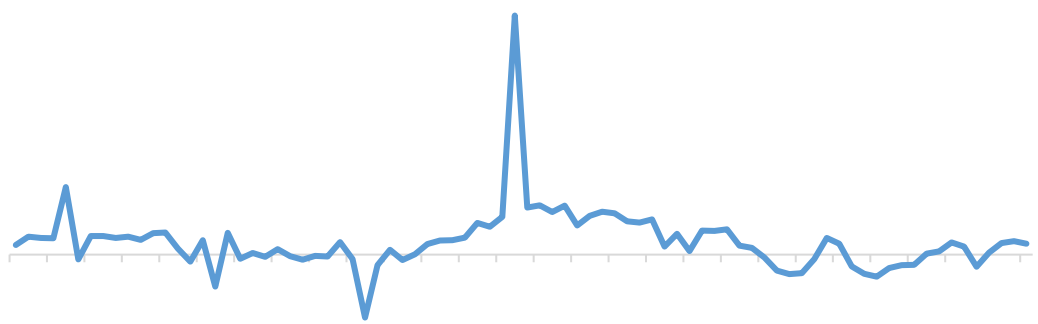
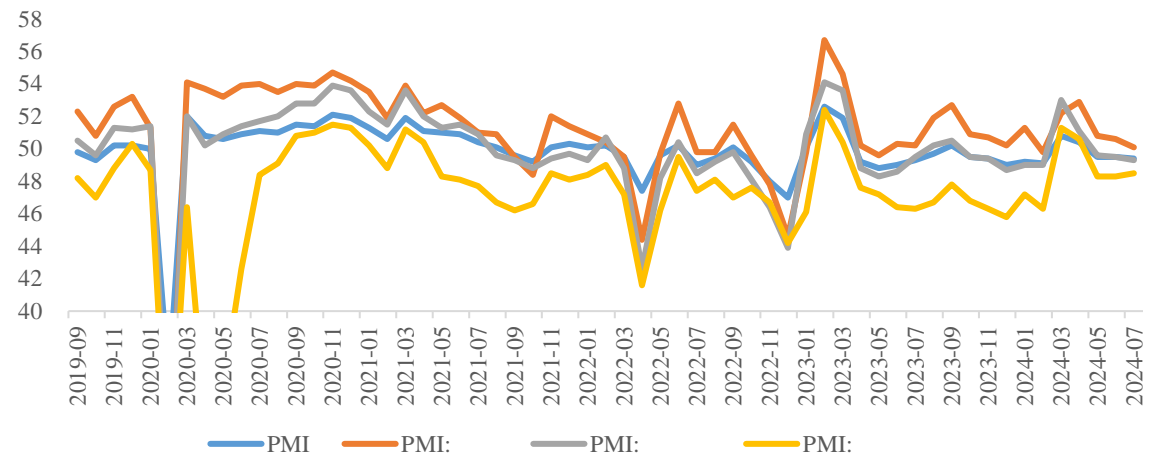


GDP



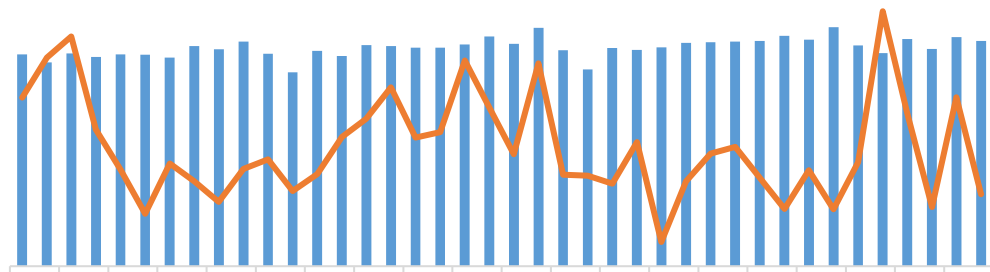
30 : :

PMI



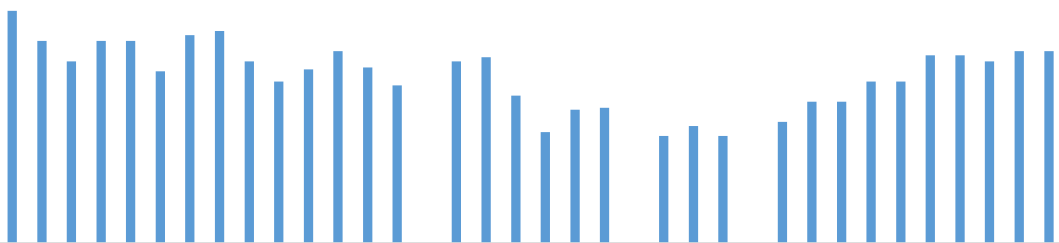


CSPT

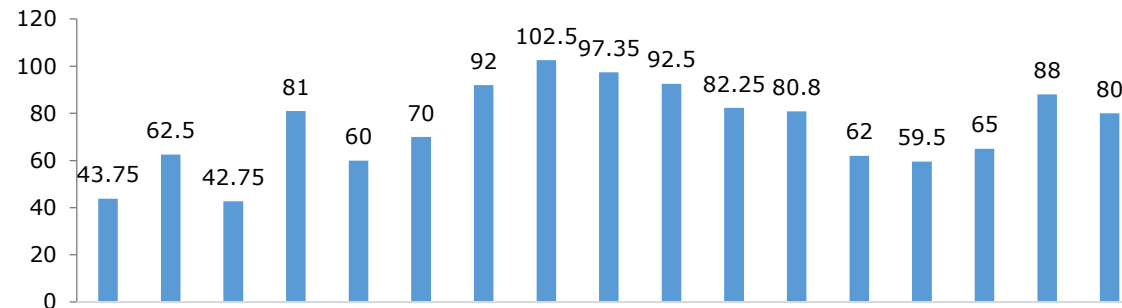


■ 五 —

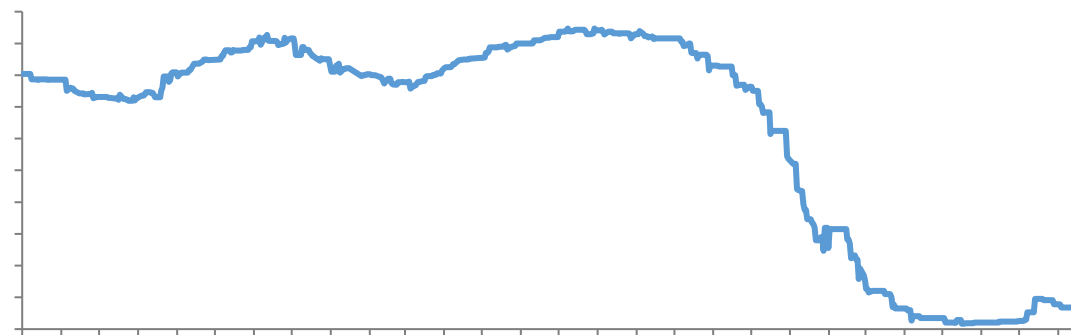
CSPT



TC



TC



1-7

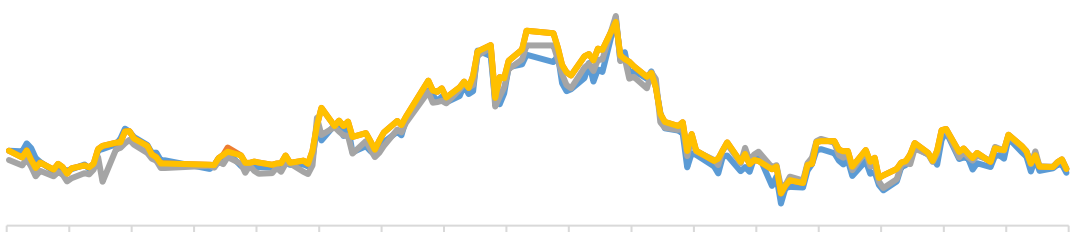
+7.11% 7

102.8

+11.05%

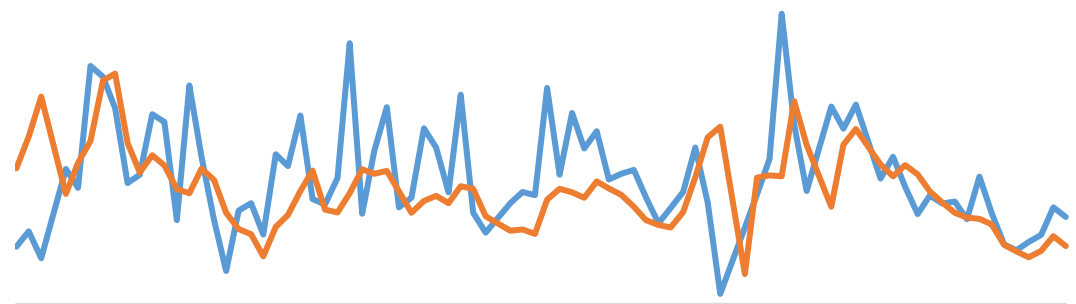


[Redacted Title]



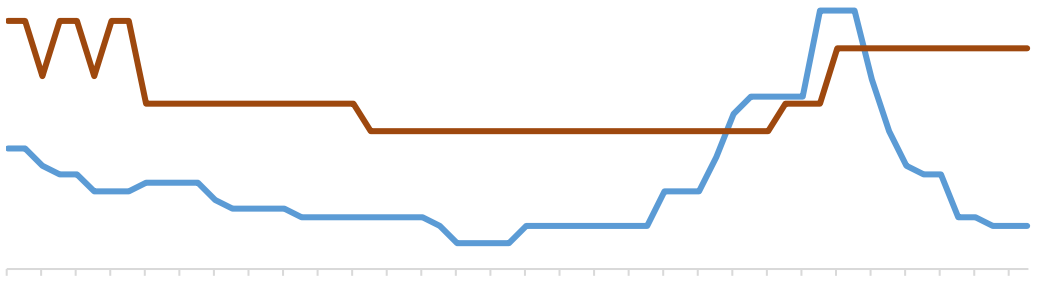
— (Blue line)
— (Grey line)
— (Orange line)
— (Yellow line)

[Redacted Title]



— (Blue line)
— (Orange line)

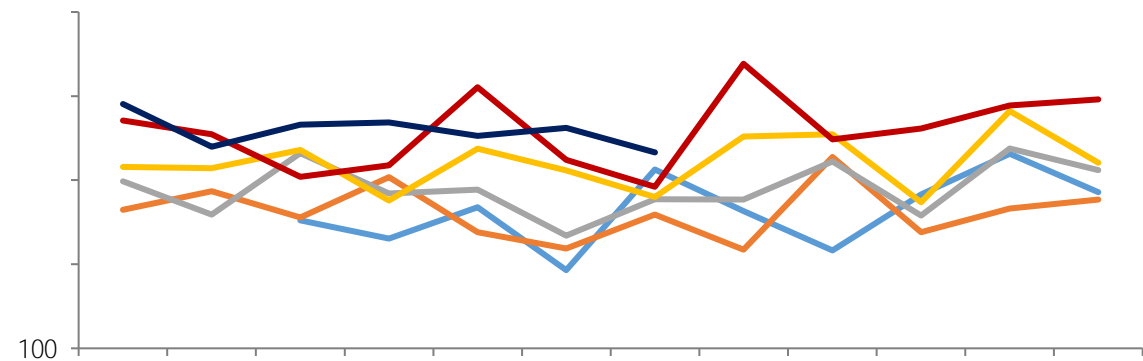
[Redacted Title]



— (Blue line) 五 业
— (Brown line) 业

[Redacted text block]

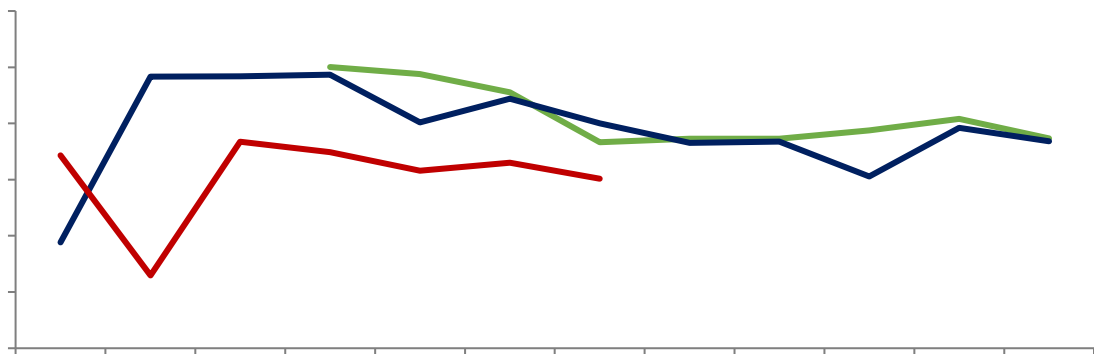
[Redacted text block]



[Redacted text block]

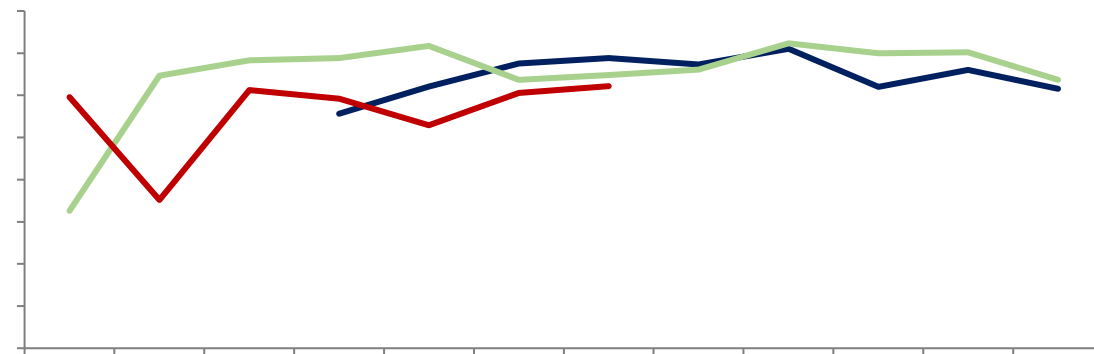
[Redacted text block]

[Redacted Title]



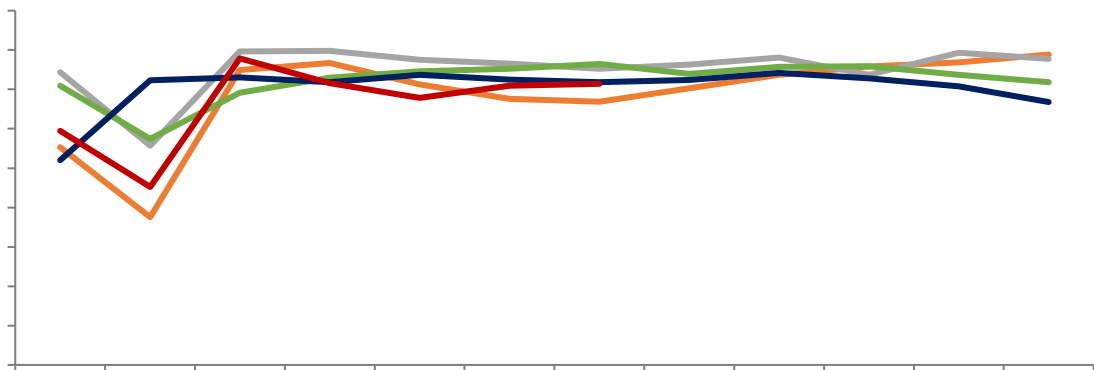
— — —

[Redacted Title]



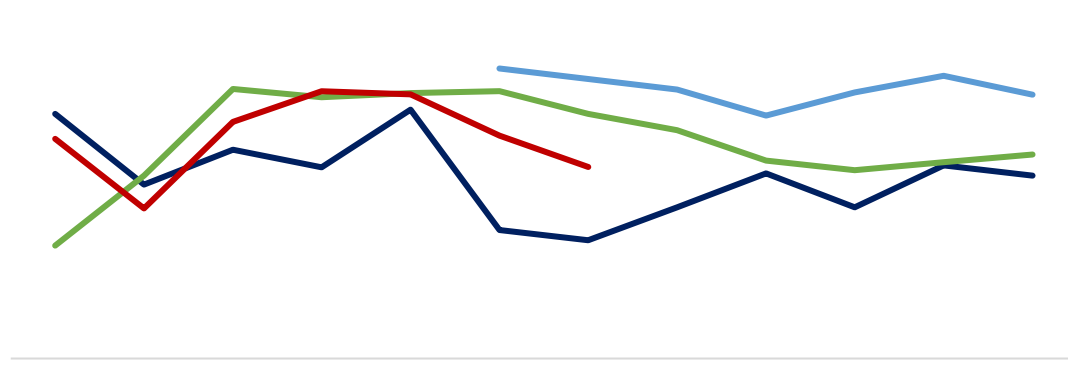
— — —

[Redacted Title]



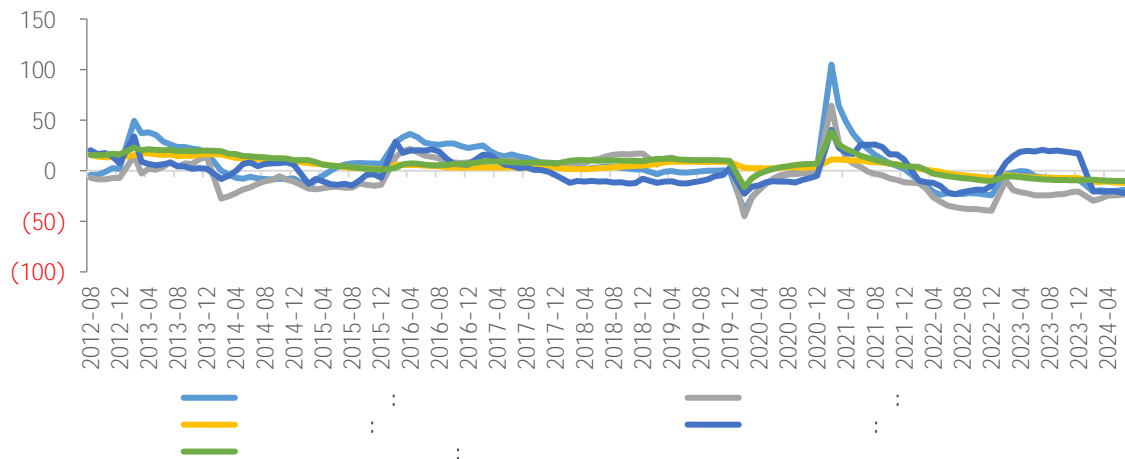
— — — — — —

[Redacted Title]

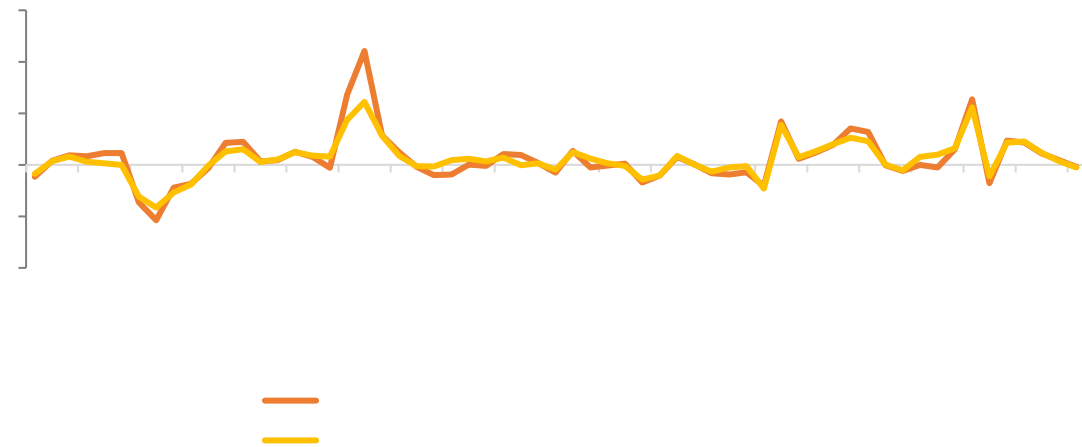


— — — —

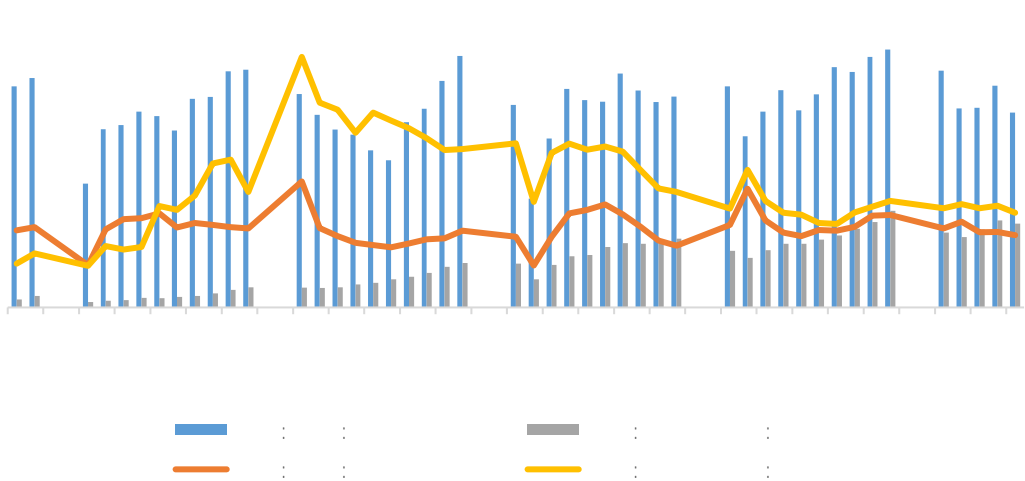
Line chart showing data from 2012-08 to 2024-04. The y-axis ranges from (100) to 150. The chart shows four data series: blue, yellow, green, and grey. A significant peak is visible around 2020-12.



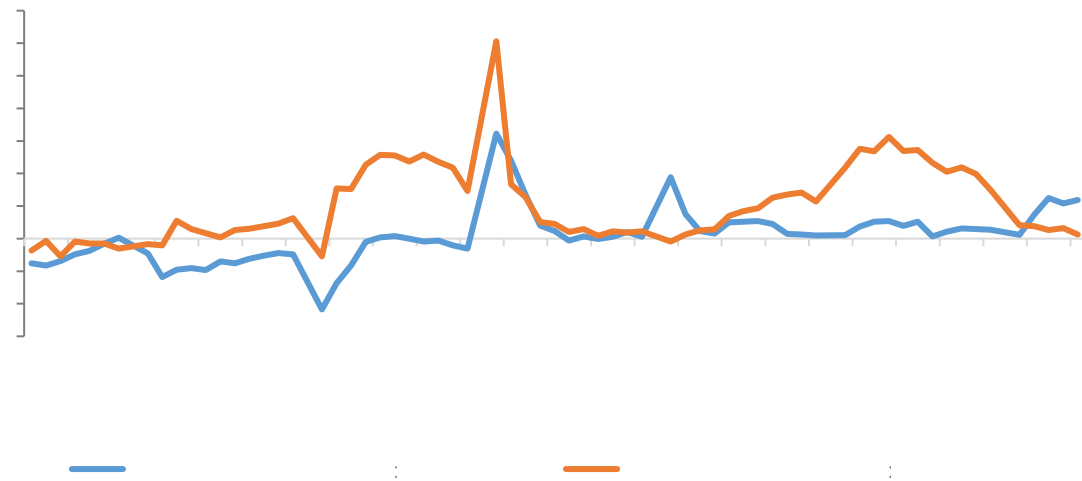
Line chart showing data from 2012-08 to 2024-04. The y-axis ranges from (100) to 150. The chart shows two data series: orange and yellow. A significant peak is visible around 2020-12.



Bar chart showing data from 2012-08 to 2024-04. The y-axis ranges from (100) to 150. The chart shows four data series: blue, orange, grey, and yellow. The blue series shows high volatility with many peaks.



Line chart showing data from 2012-08 to 2024-04. The y-axis ranges from (100) to 150. The chart shows two data series: blue and orange. A significant peak is visible around 2020-12.

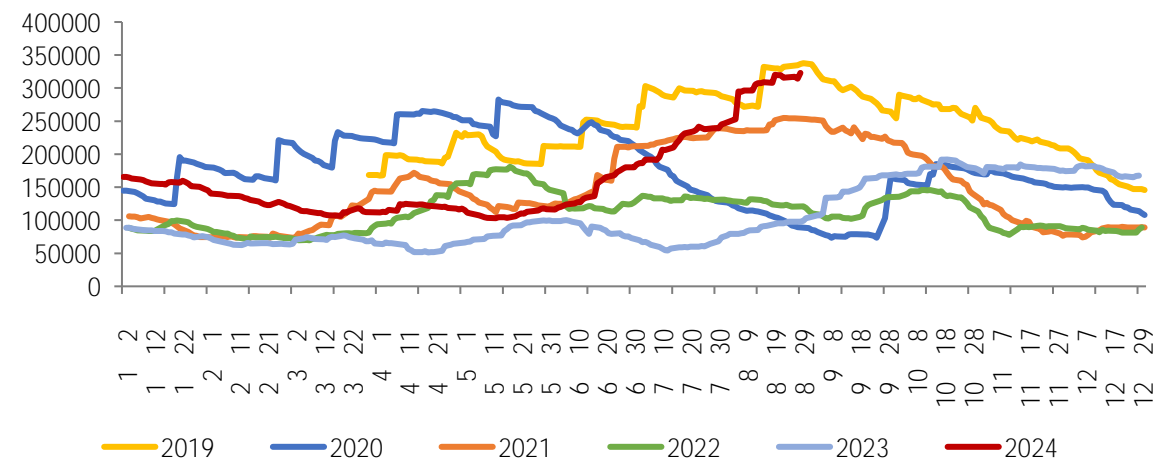




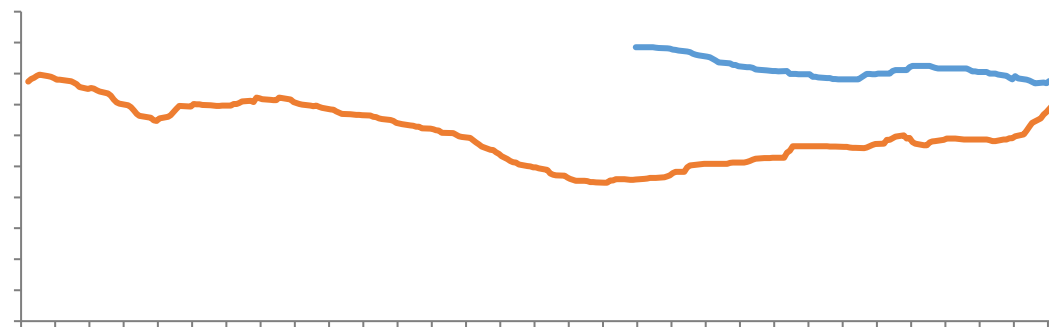
LME COMEX

SHFE

LME

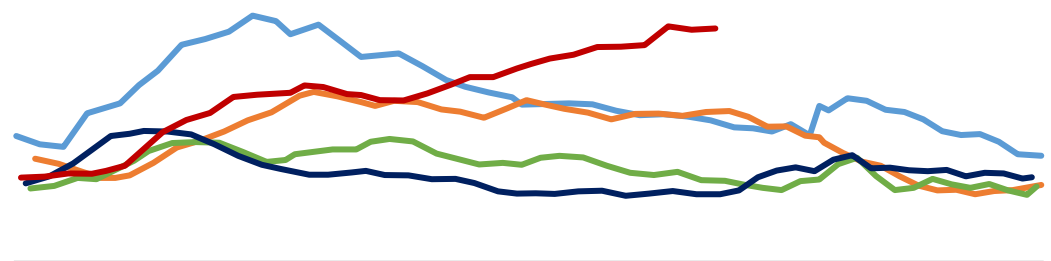


COMEX

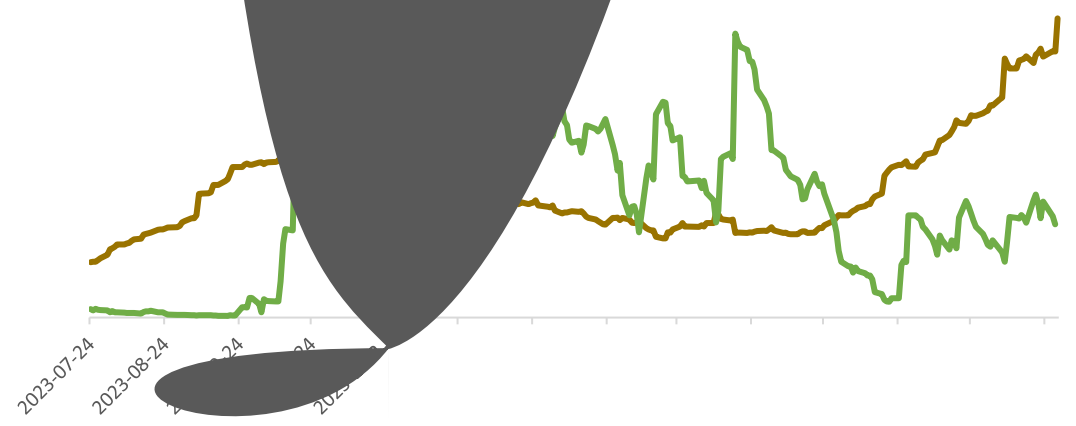


[Redacted]

SHFE



LME



LME

-

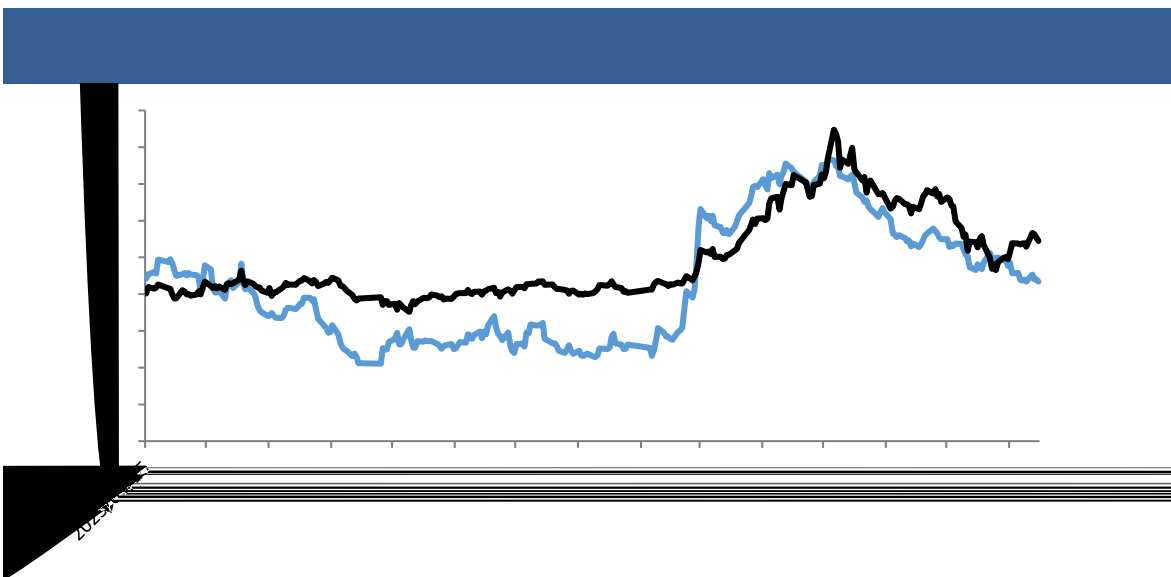
-

LME0-3



CFTC

LME





/





021-68905325 业 388 69 1 20 22 03A-3 04B	0571-89809624 111 2 1301	028-83279757 产 12 6 802	0757-88772666 28 业 2 2301 2302
0755-83533302 业 704A 705	0757-83607028 子 A 57 2 3006	0769-22900598 1501B	0763-3808515 25 2 04 05 06
0758-2270761 业 1704 1705 ²	010-63360528 个 24 1 - 5 32 101 12 1211	027-59219121 193 业 A 14 1401-9	0371-86533821 80 1 2 23 2301
0532-88910060 100 905	020-22836158 1 业 6	020-22836155 1 业 6	020-22836182 1 业 6
020-22836185 业 6	020-22836187 1 业 6	021-50390172 388 22 2201	

