

11 8 CU2412 77100 / 0.76% 75520-78170 /

11 25BP

2025 3

2024

4

6

10

8000

11 8 SHFE 139662

LME 13559 11 7

SMM 1025 SMMTC 0.56

19.25  
10.45

11.09 1.73 0.64

272400

11

TC

7.5-7.9



01



02



03



04



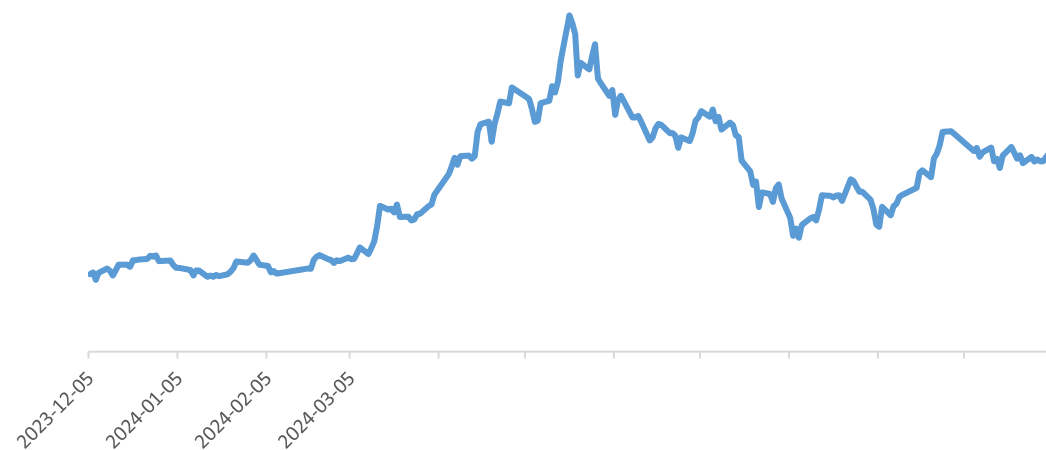
05



06



LME



Wind

✓

2025 3

A

✓

11 8

CU2412 77100 /

0.76%

75520-78170 /

LME

9592 /

0.56%

9302-9782 /

11

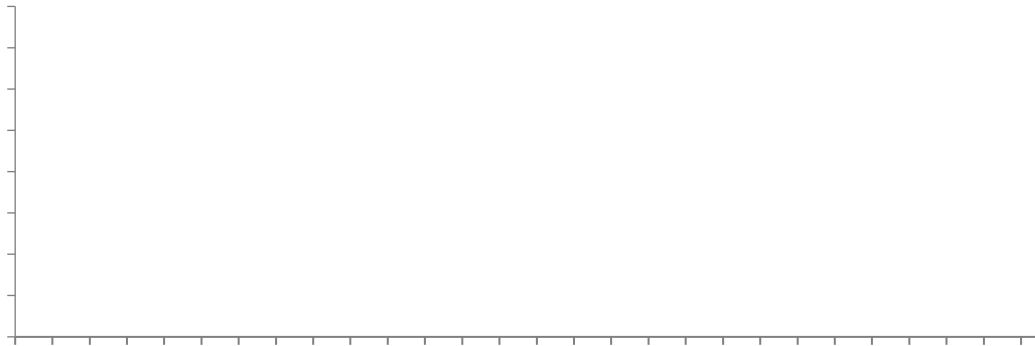


11

25BP



ISM





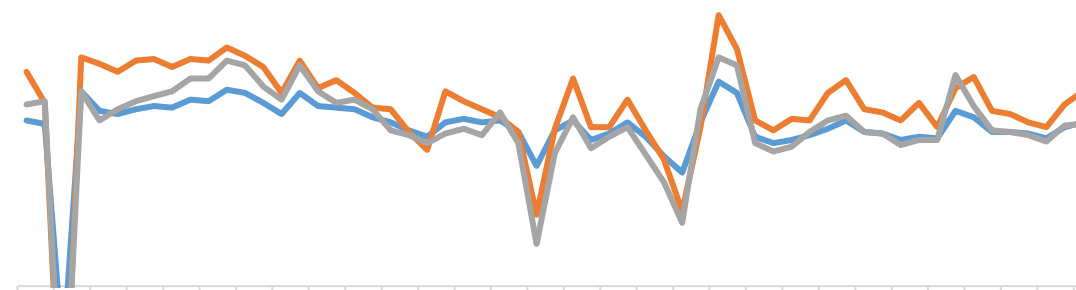


10 PMI 50.1

30

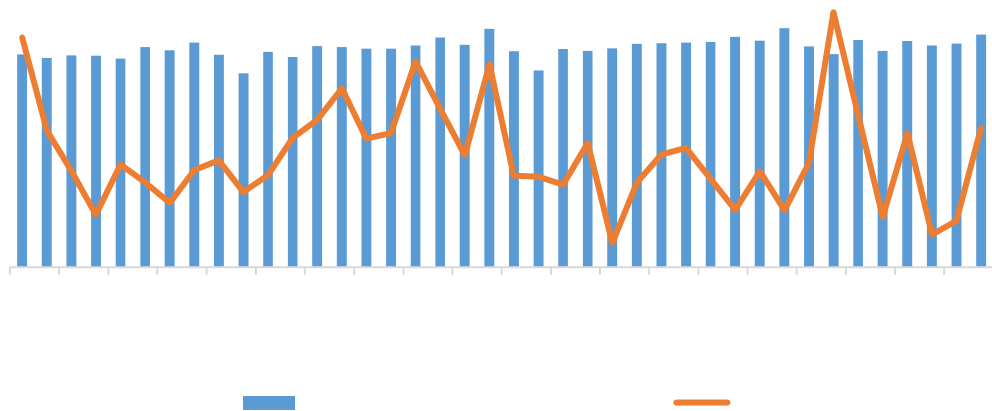
:

PMI

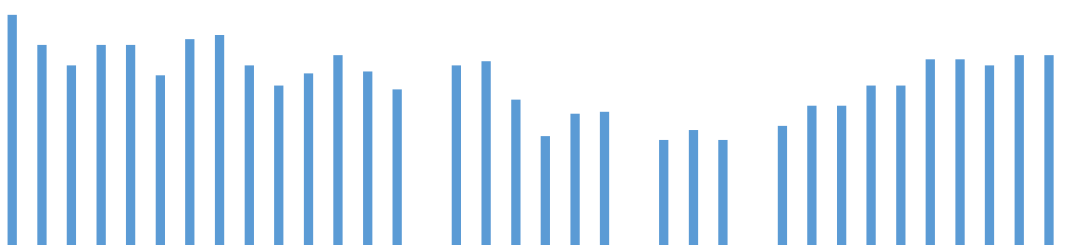




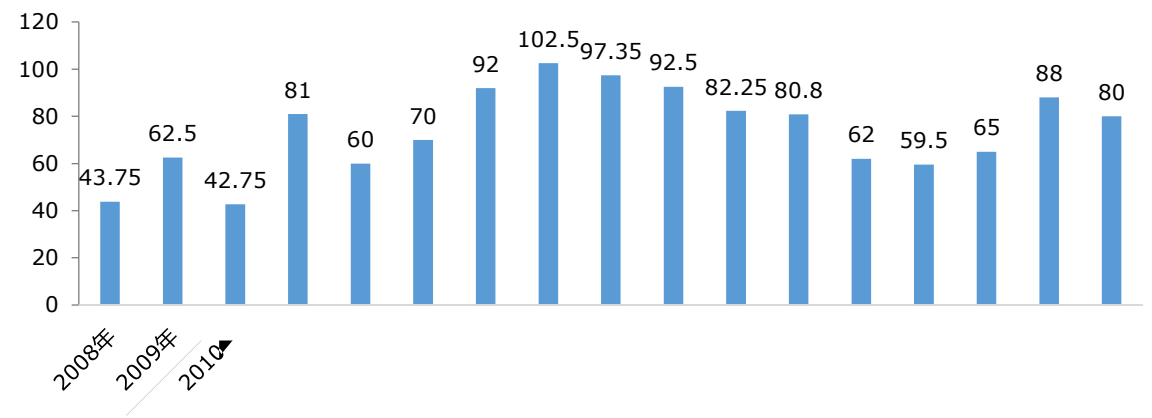
CSPT



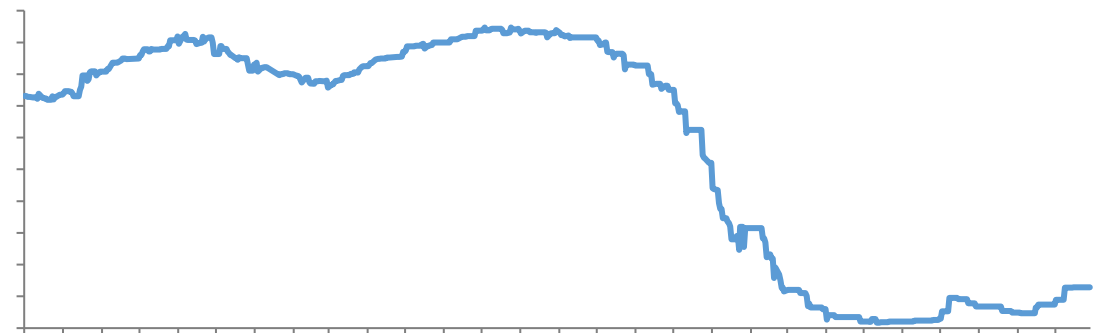
CSPT



TC



TC



1-10

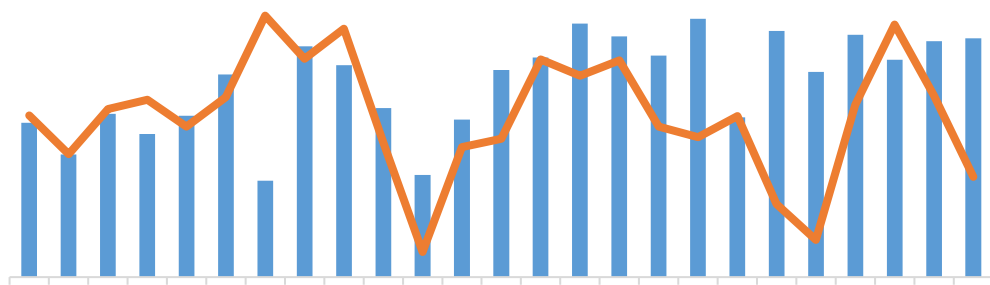
+5.06% 10

99.57

+0.19%

[Redacted]

SMM

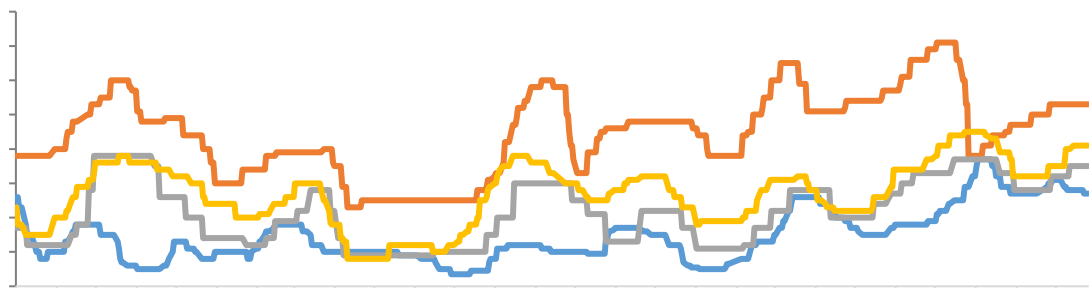


—

—

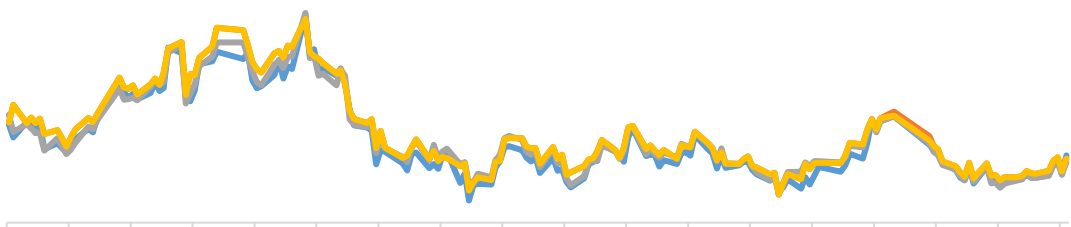
[Redacted]

: (98%):



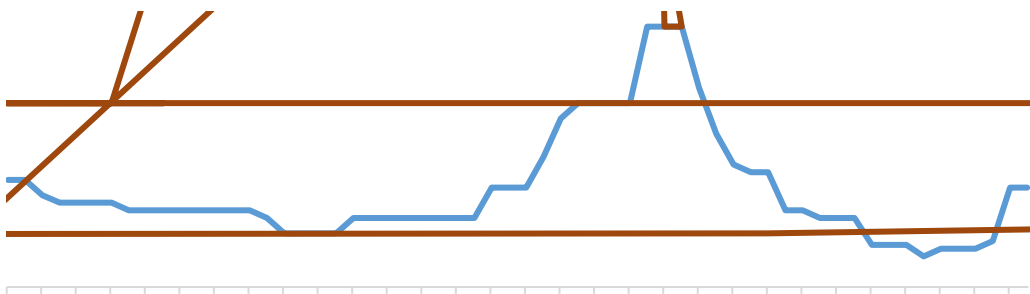
—

[Redacted Title]

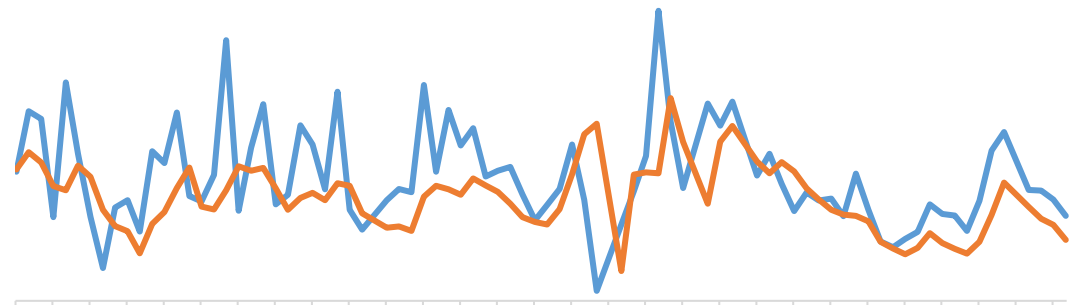


—                      —  
—                      —

[Redacted Title]



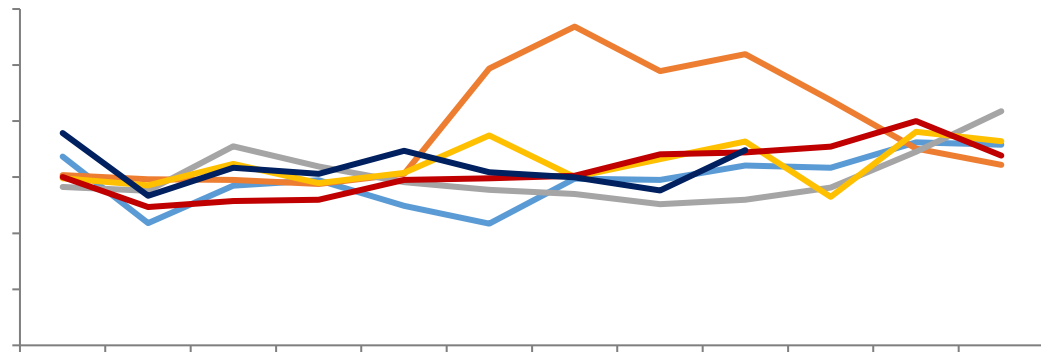
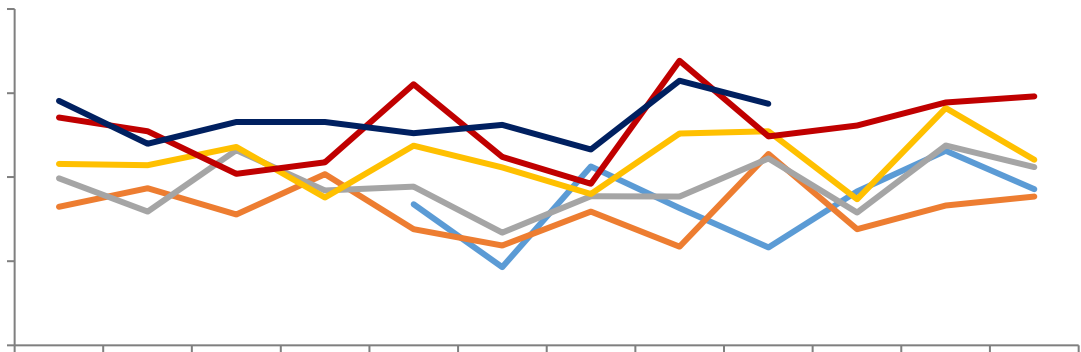
[Redacted Title]



—                      —

[Dark blue header bar]

[Dark blue header bar]

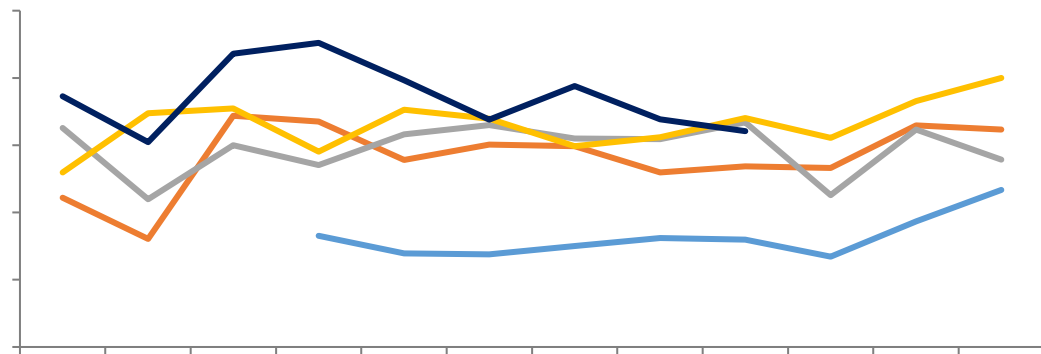
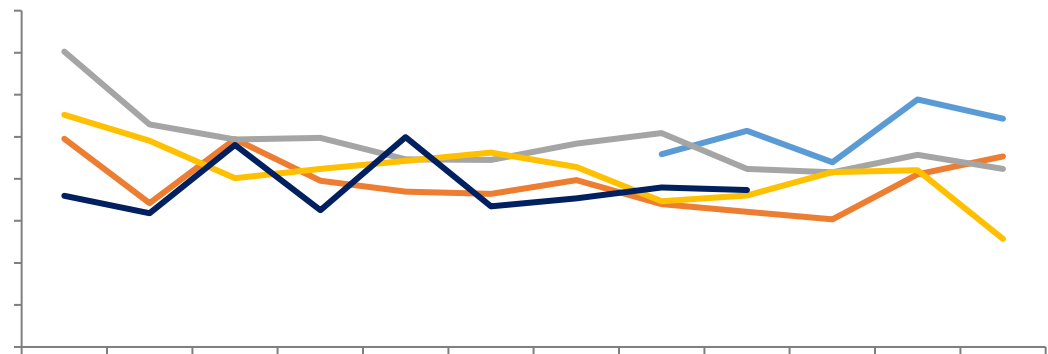


[Legend for top-left chart: blue, orange, grey, yellow, red, dark blue]

[Legend for top-right chart: blue, orange, grey, yellow, red, dark blue]

[Dark blue header bar]

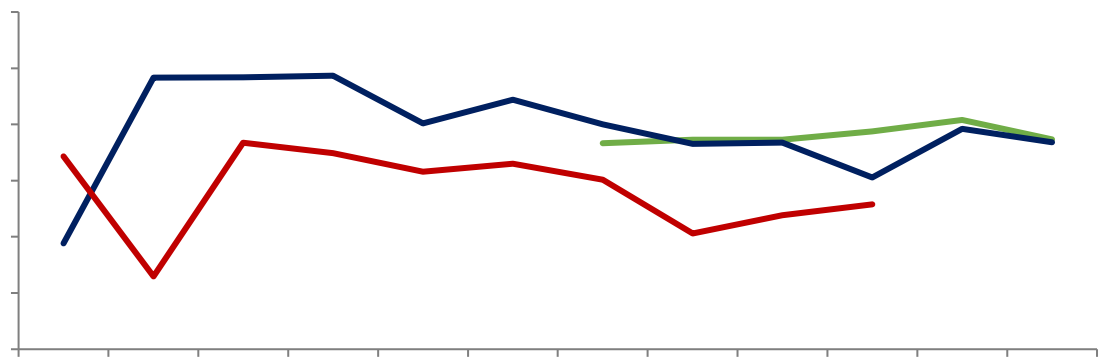
[Dark blue header bar]



[Legend for bottom-left chart: blue, orange, grey, yellow, dark blue]

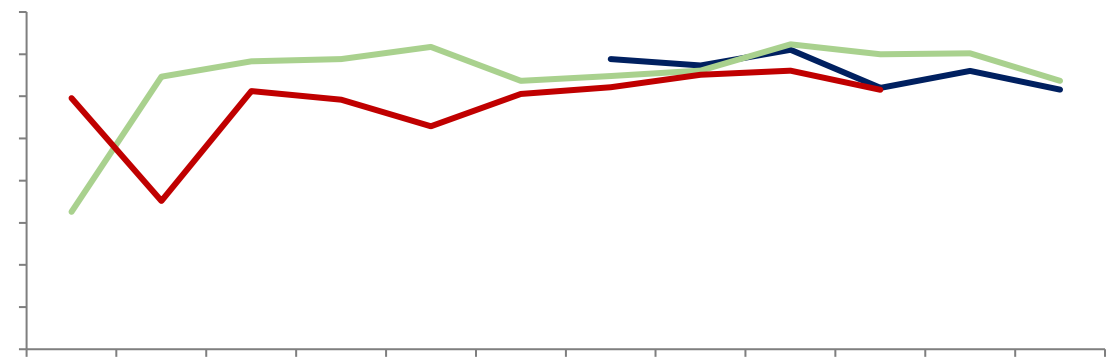
[Legend for bottom-right chart: blue, orange, grey, yellow, dark blue]

[Redacted Title]



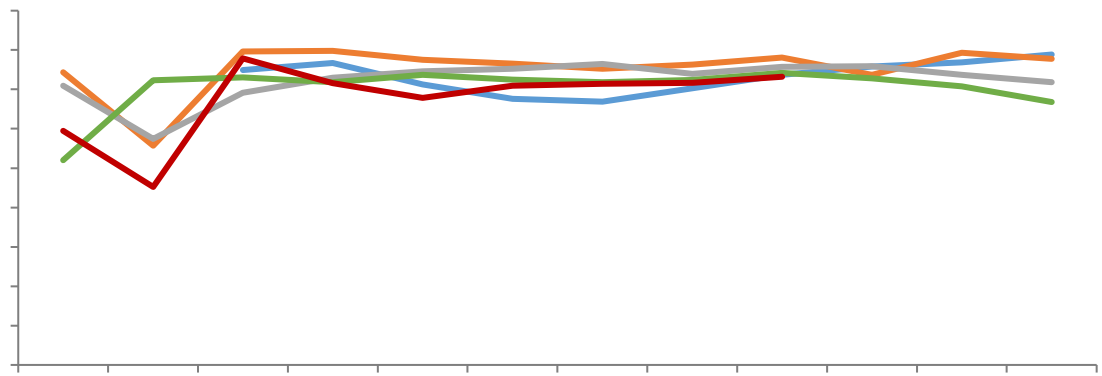
— Green — Dark Blue — Red

[Redacted Title]



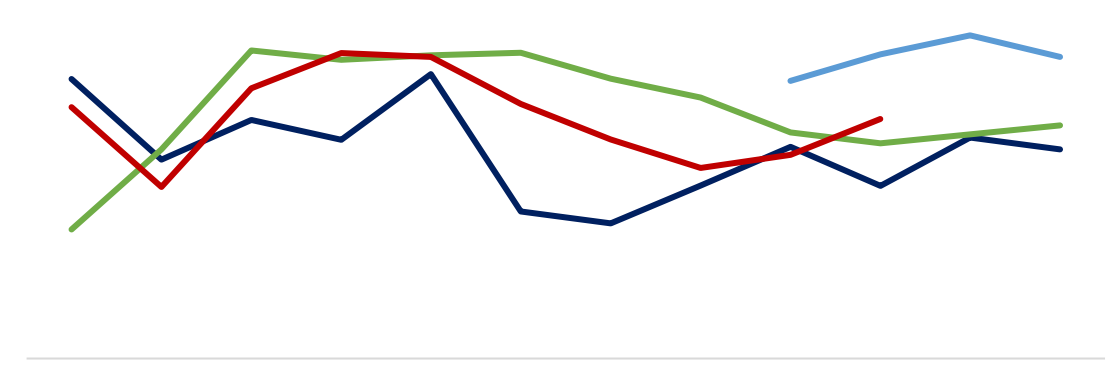
— Dark Blue — Green — Red

[Redacted Title]



— Light Blue — Orange — Grey — Green — Red

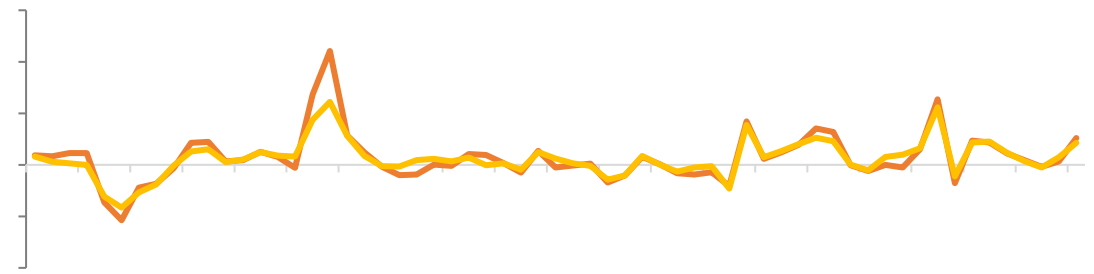
[Redacted Title]



— Light Blue — Dark Blue — Green — Red — New Blue

[Redacted]

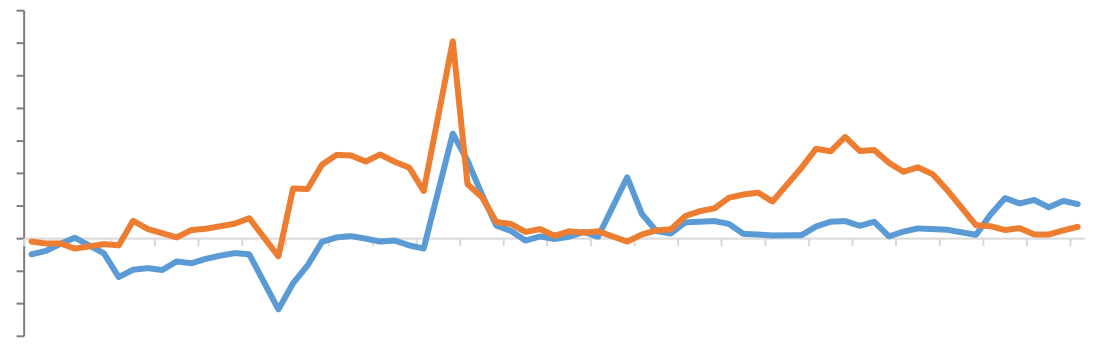
[Redacted]



—  
—

[Redacted]

[Redacted]



— —



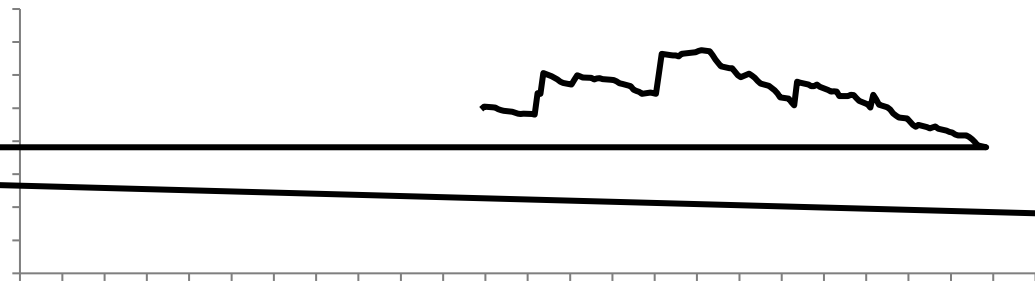


LME

COMEX

SHFE

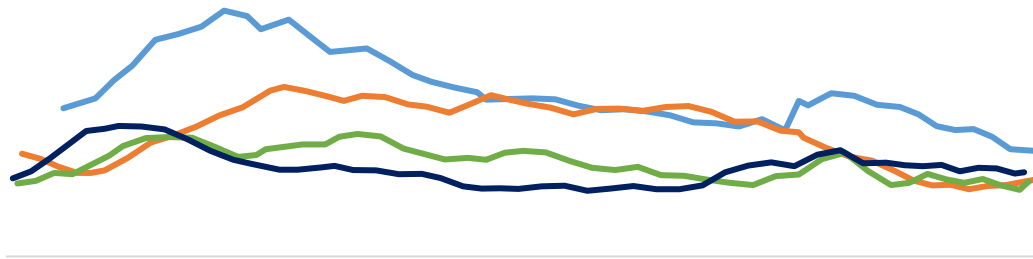
LME



COMEX

[Blank blue header bar]

SHFE

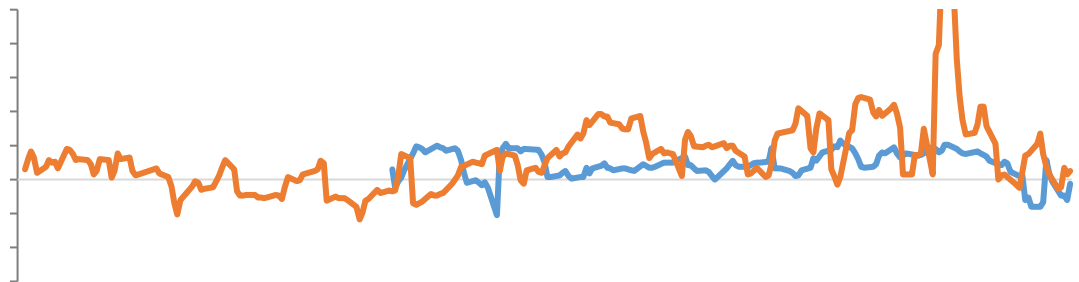


LME

# LME

-

-

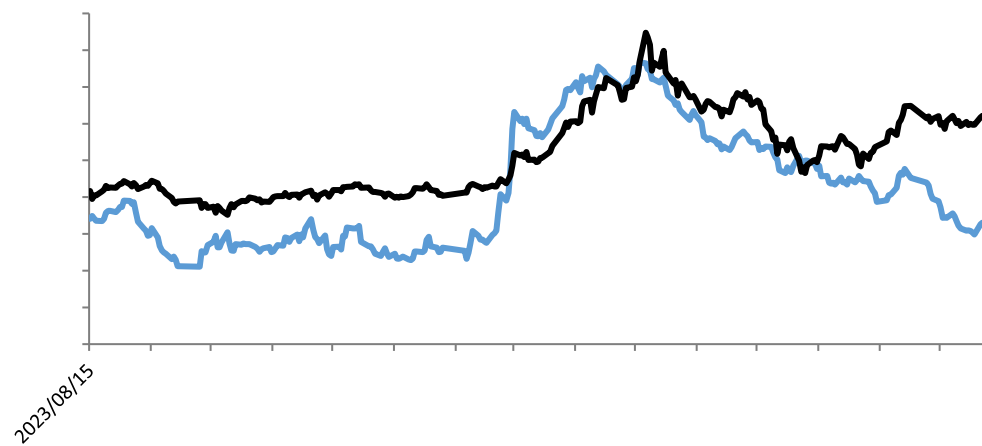


LME0-3



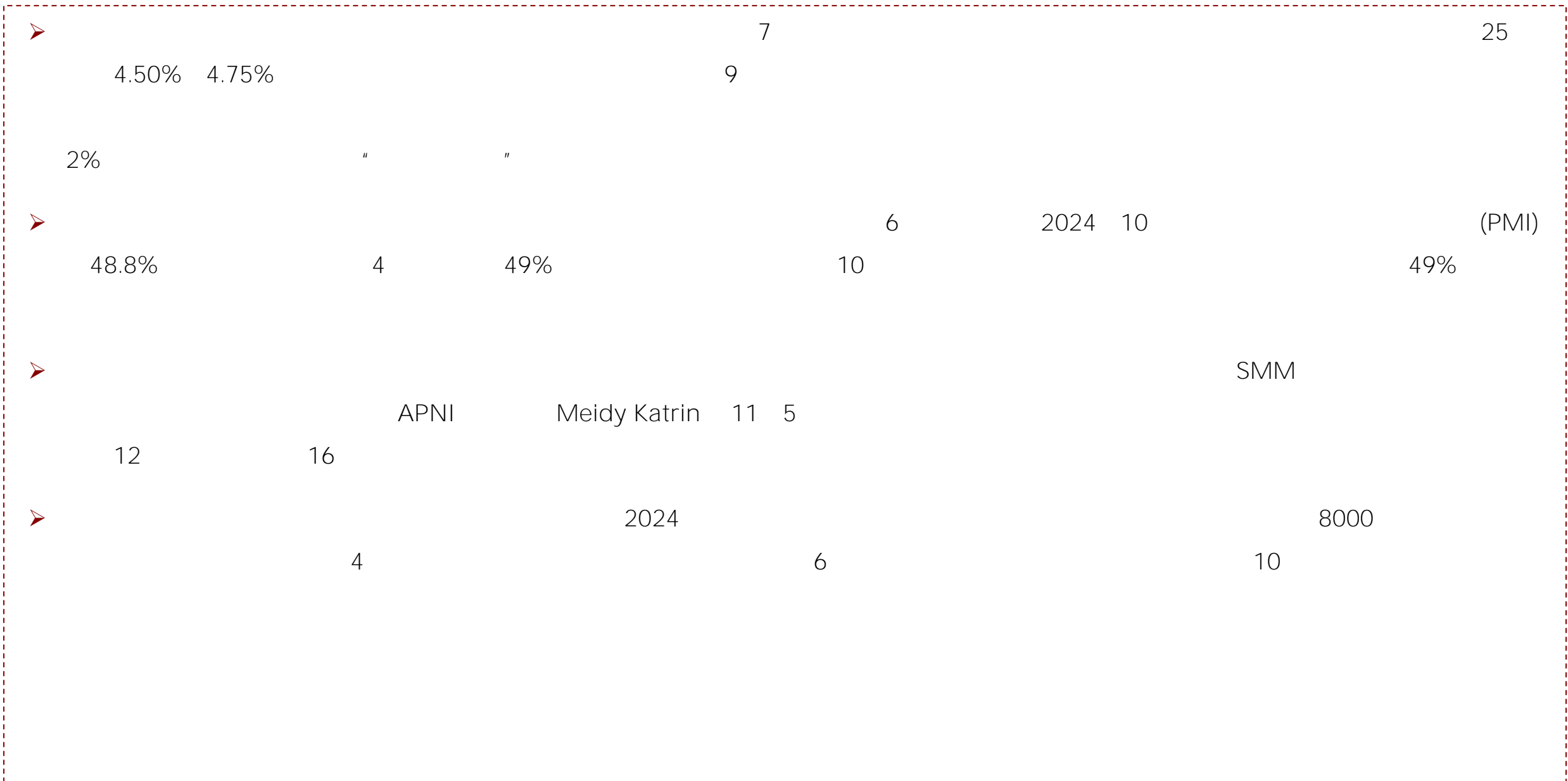
CFTC

LME





/







021-68905325 388 69 1 20 22 03A-3 04B	0571-89809624 111 2 1301	028-83279757 4 12 6 802	0757-88772666 28 2 3405
0755-83533302 704A 705 A 57 2 3006	0757-83607028 2 1501B	0769-22900598 193 A 14 1401-9	0763-3808515 25 2 04 05 06
0758-2270761 1704 1705 2	010-63360528 24 1 - 5 32 101 12 1211	027-59219121 193 A 14 1401-9	0371-86533821 80 1 2 23 2301
0532-88910060 100 905	020-22836158 1 6	020-22836155 1 6	020-22836182 1 6
020-22836185 6 1	020-22836187 1 6	021-50390172 388 22 2201	



广州期货股份有限公司

1  
[www.gzf2010.com.cn](http://www.gzf2010.com.cn)

5/6